

12.11.13.  
8.6.14 (nos 368/9)  
24.2.15 (376)  
8-3-15 (377)



From DAVID ROWAN & CO., GLASGOW.

ENCLOSURE

FOR MESSRS.

CHAS. CONNELL & CO.



© 2020

Lloyd's Register  
Foundation

C Connell & Co

Turbine Seating

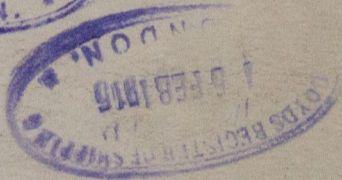
N<sup>o</sup> 361 7/8

x 368/9 + 376

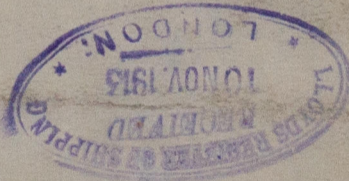


N<sup>o</sup> 361 7/8 Mahanada

GLASGOW REPORT No. 34565

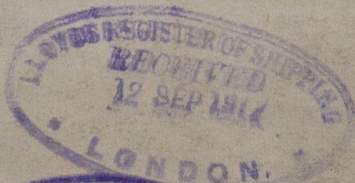


GLASGOW REPORT No 34354  
7/8 Maizar



GLASGOW REPORT No. 37123

7/8 manaar.



W49-0134

© 2020

Lloyd's Register  
Foundation