

GENERAL PARTICULARS.

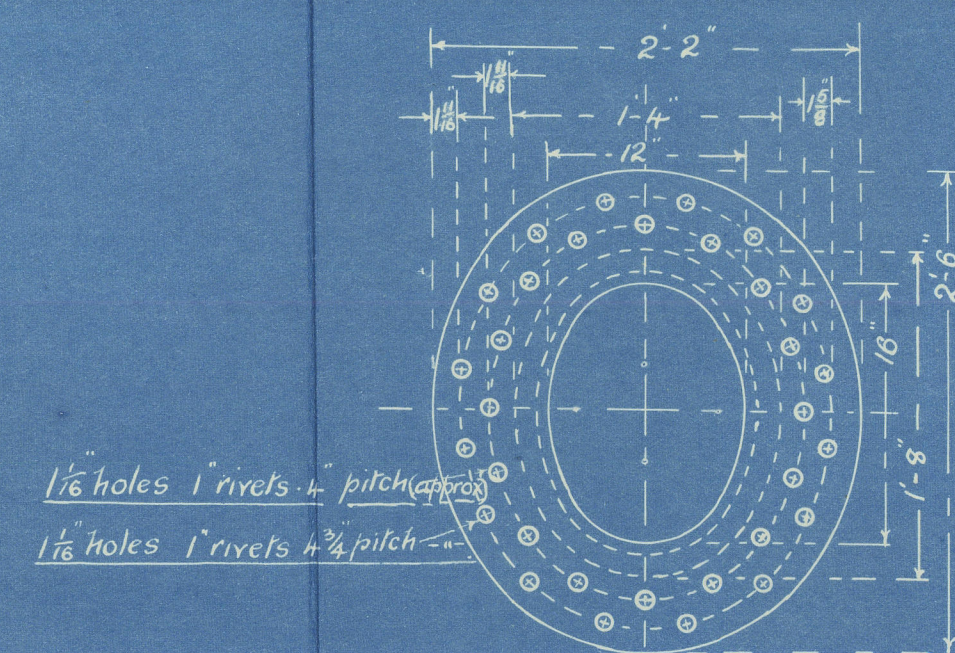
Length of boiler over end plates.	10'-3"
Diam of boiler inside shell.	11'-0"
Heating Surface of Tubes.	952.5 sq ft
" " " Furnaces.	76 "
" " " CC. tube plates.	29 "
" " " back plates.	51 "
" " " top & sides.	95 "
Total heating surface.	1203.5 sq ft
Graze Area (5-6 bars).	33 sq ft
Steam Space (7 inches above CC).	213.5 cu ft
Graze Area : Heating Surface.	1 : 36.4
" " : Steam Space.	1 : 6.5
" " : Tube Surface.	1 : 28.8
Working Pressure (Lloyds) lbs per sq in.	120
Test Pressure " " " "	240

RIVETING

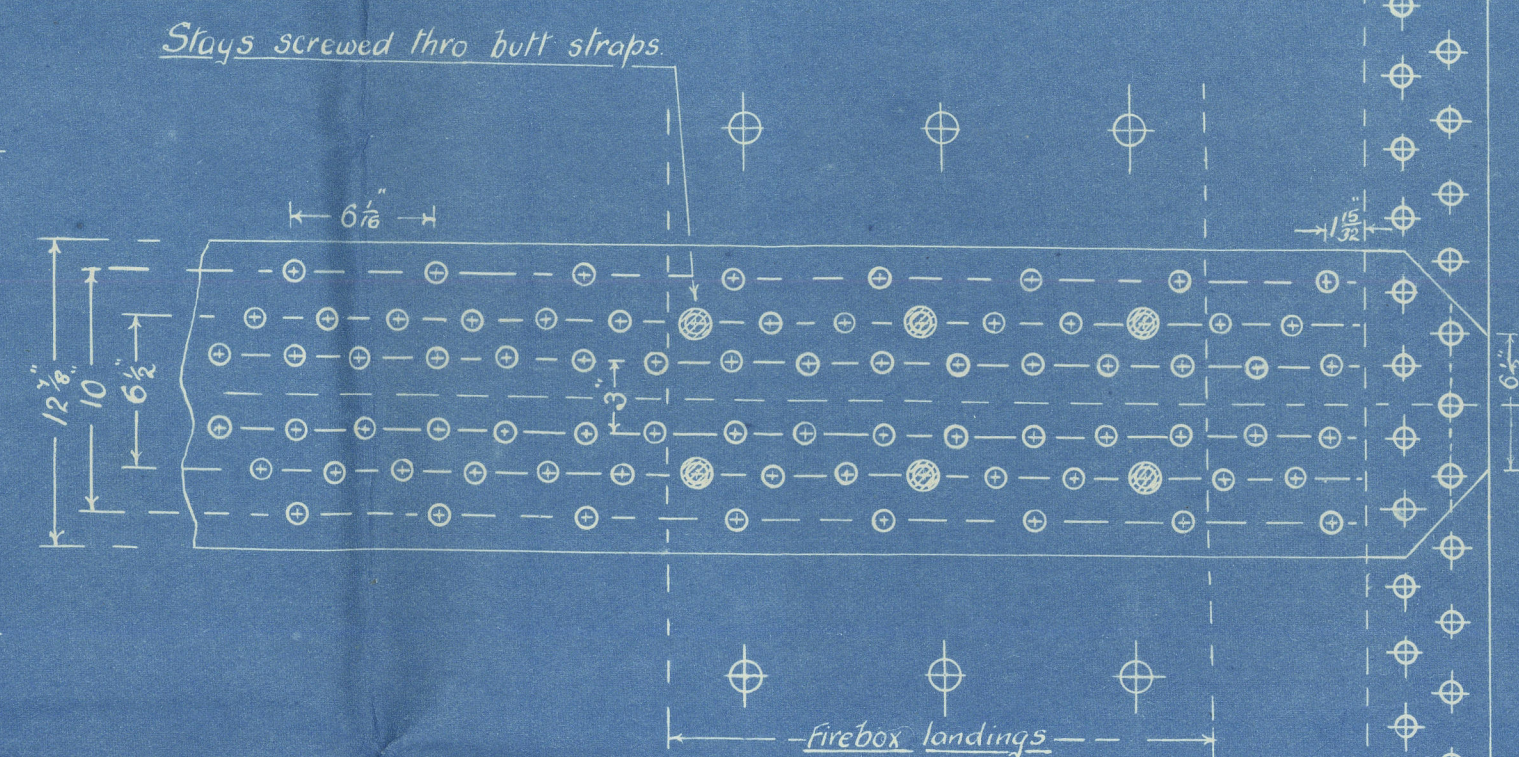
Rivet hole diam.	Longitud.	Back and Circumf.	Front end, Fuselage.
1/16"	1/16"	1/16"	1/16"
1/8"	1/8"	1/8"	1/8"
3/16"	3/16"	3/16"	3/16"
1/4"	1/4"	1/4"	1/4"

LIMITS OF TENSILE STRENGTH & MATERIAL

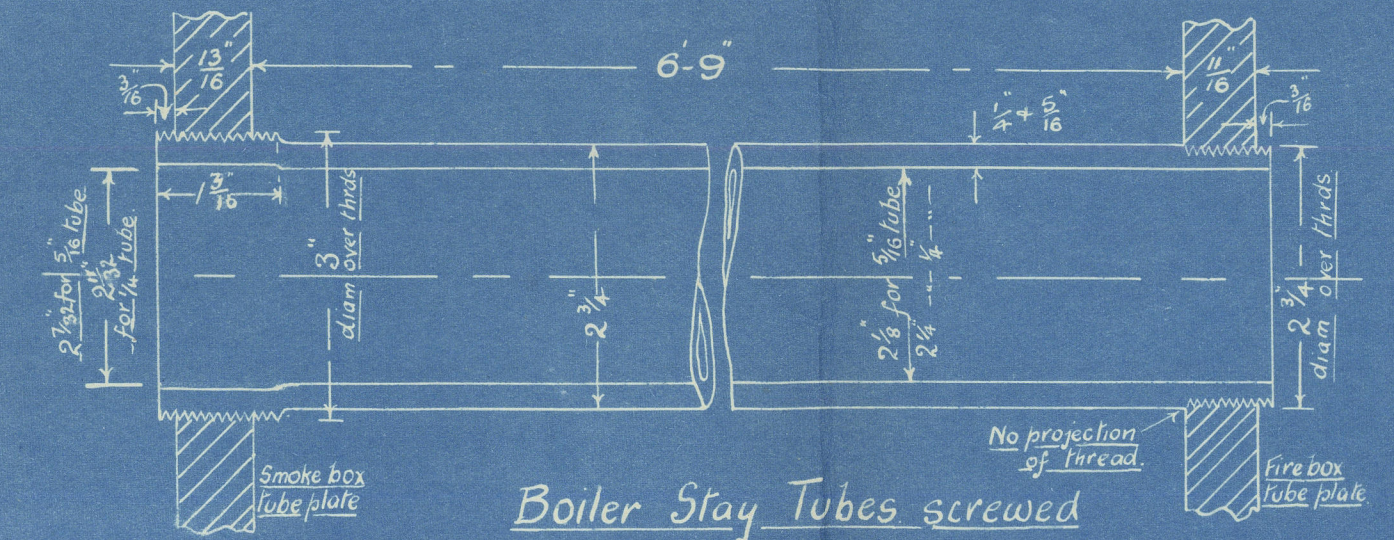
Shell, butt straps & girders.	28 to 32 tons	Siemens
Other Plates.	26 " 30 "	" "
Furnaces.	26 " 30 "	" "
Main stays.	28 to 32 tons	" "
Screwed stays.	26 " 30 "	" "
Rivet bars.	26 " 30 "	" "



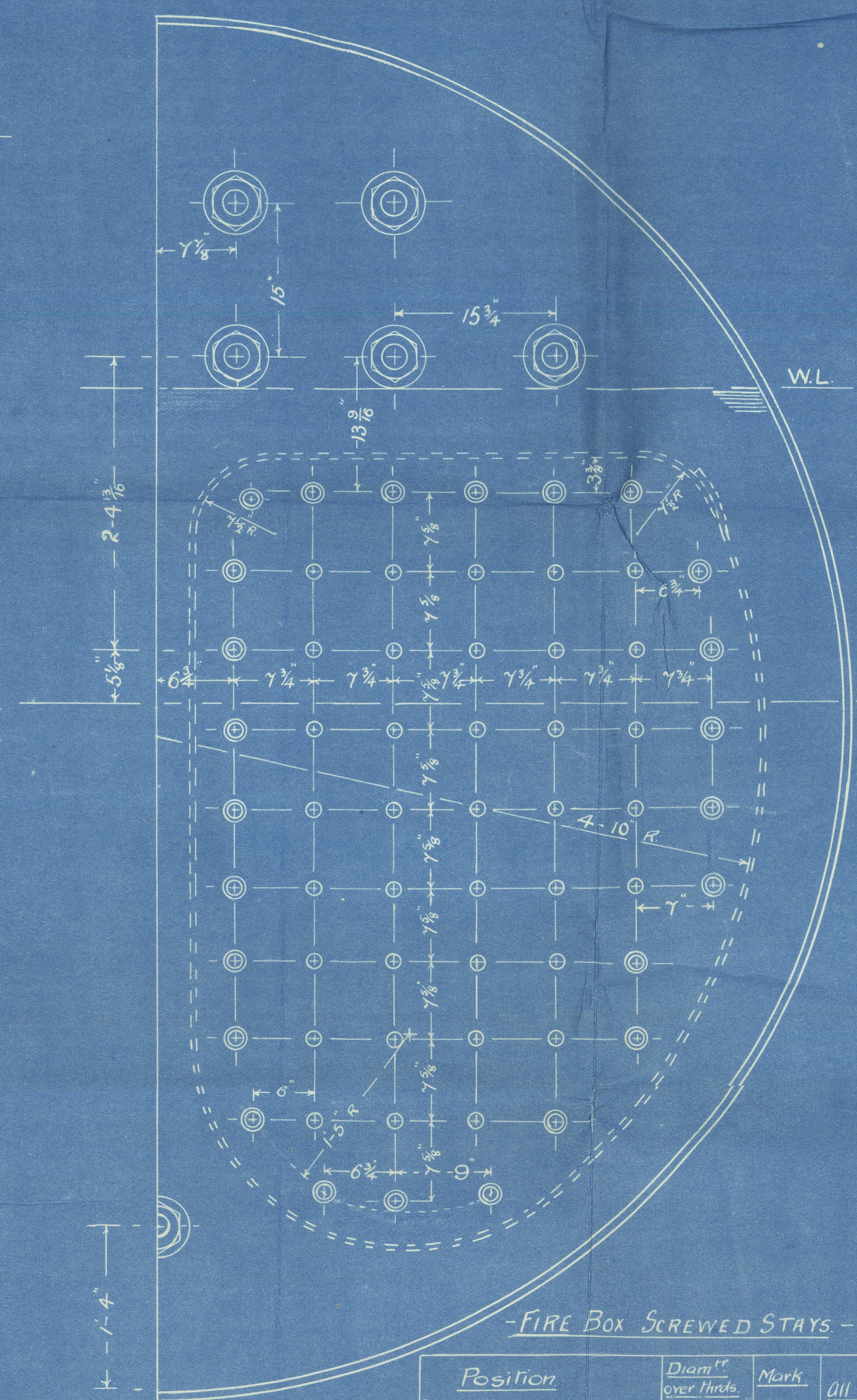
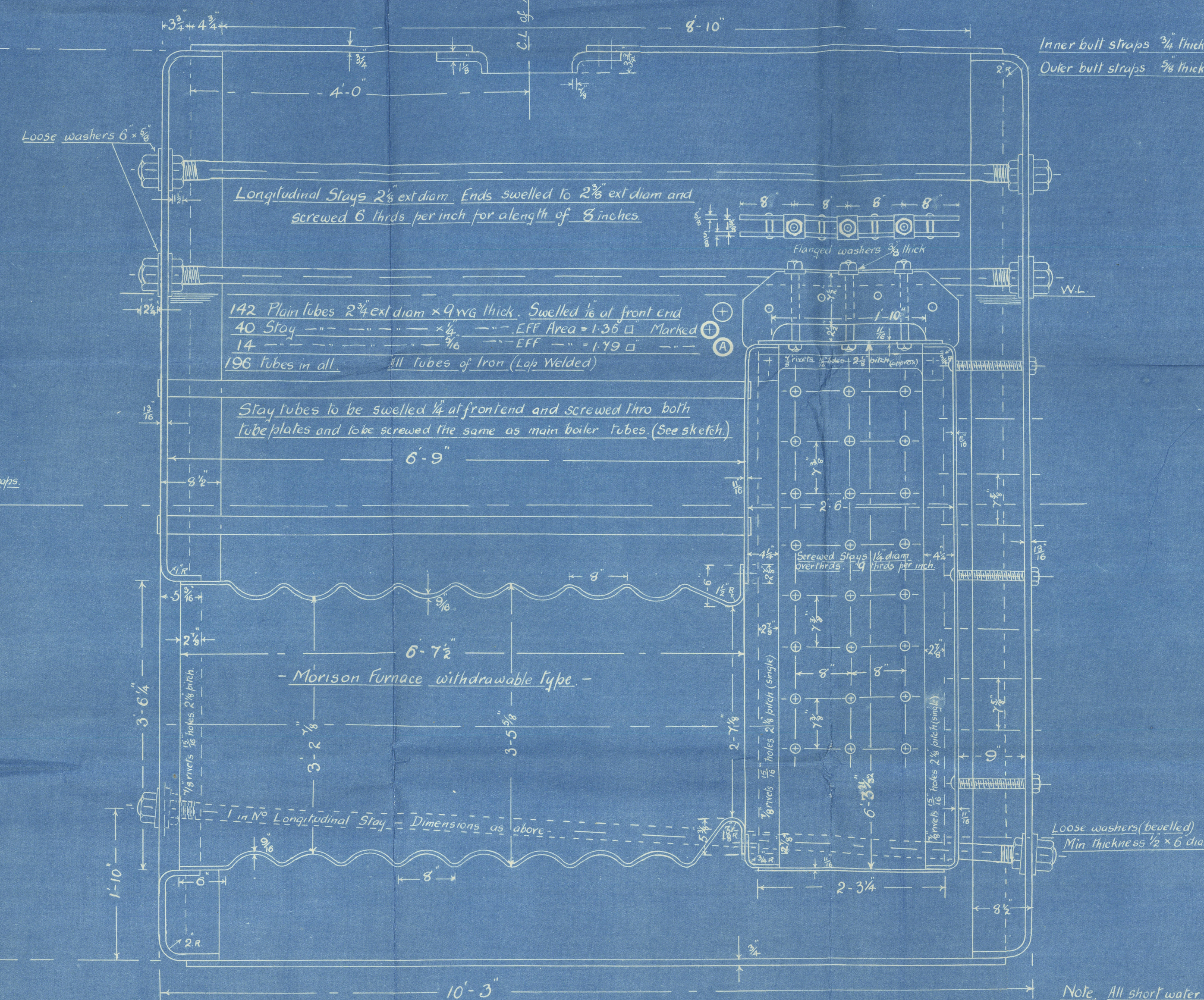
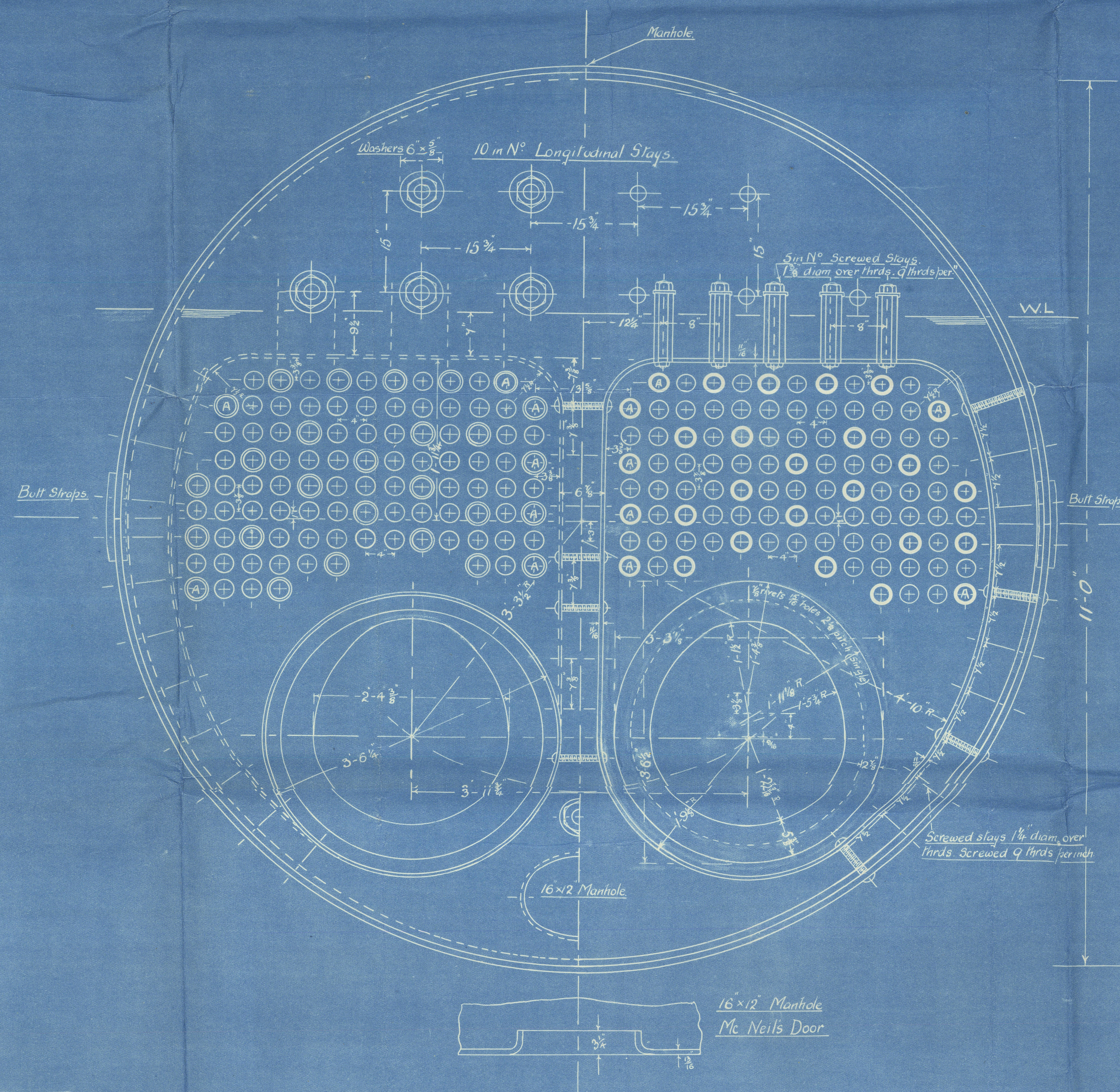
Manhole compensating ring
Mc Neil's door



Note: Inner butt straps scarfed to centre line of inner row of rivets.
All holes are to be drilled when plates are together and all
planing and rivetting where practicable to be done by hydraulic pressure.



Boiler Stay Tubes screwed
9 threads per inch.



FIRE BOX SCREWED STAYS

Position	Diam. over heads	Mark	All short stays to be screwed 9 threads per inch
Boundary Stays (back)	1 3/8"	⊙	
Remainder of back	1 1/2"	⊙	

Note: All short stays to be 1/2 inch thick, except on girder tops, where the outside nuts are 1 3/8 inch.

8400 TON OILERS

Proposed details of Donkey Boiler

Working Pressure 120 lbs per sq in.

Scale 1 inch = 1 foot

J. R. J.

11/21

Duplicate

Oiler's Nos 3+4

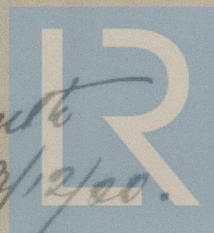
Donkey Boilers

"Nassau"

Phy. 6185.

RECEIVED

Plymouth
23/12/00.



© 2020

Lloyd's Register
Foundation

W493-0122