

4/1/20

W. Lambach

-GENERAL PARTICULARS-

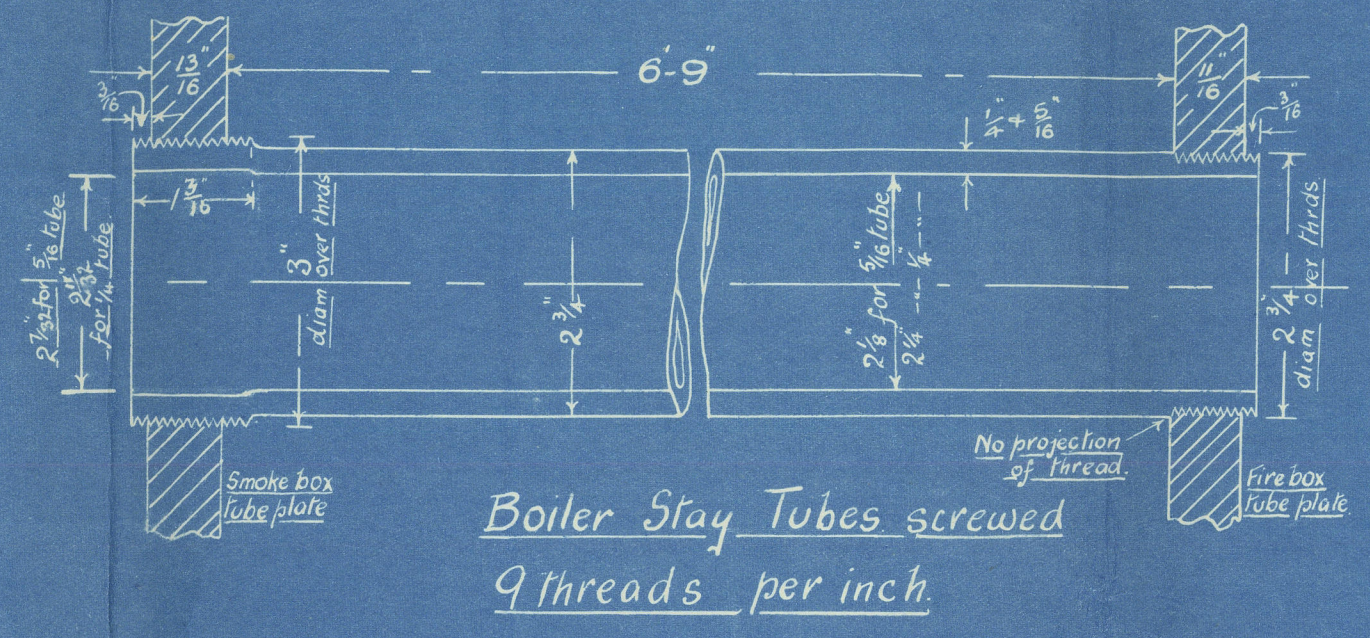
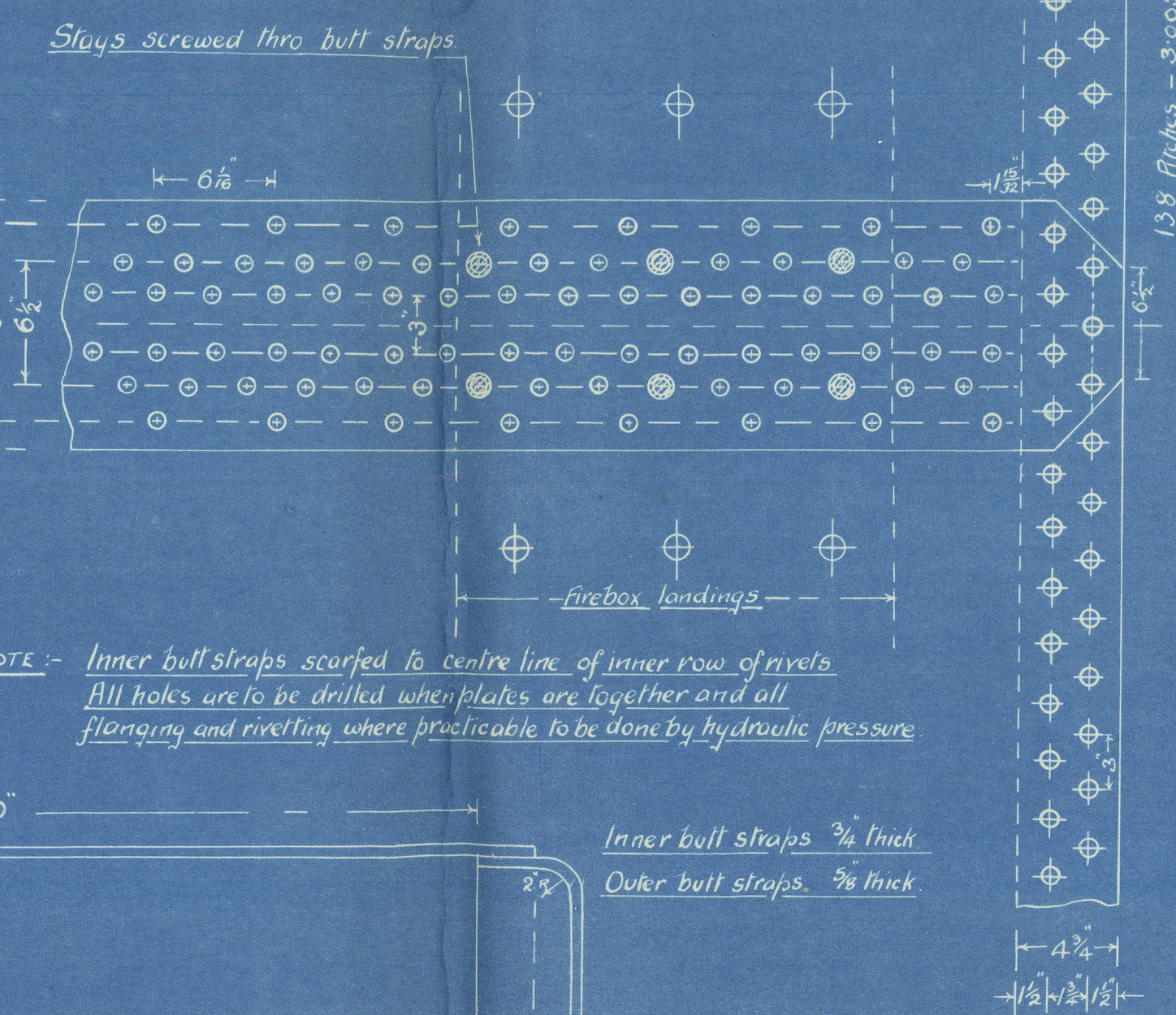
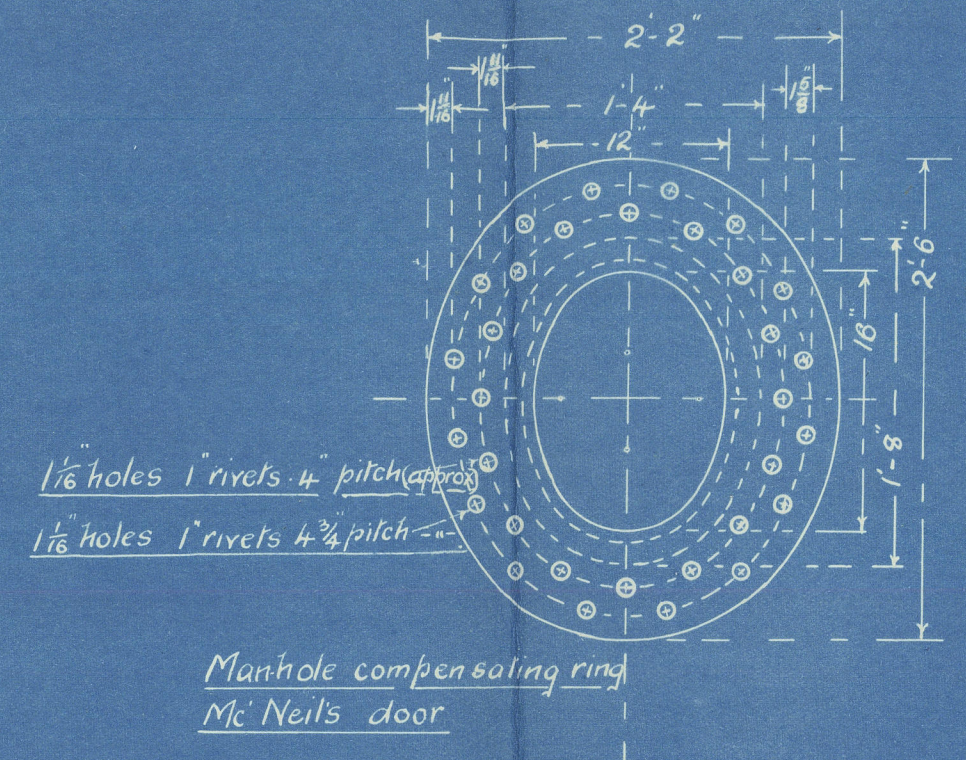
Length of boiler over end plates.	10'-3"
Diam of boiler inside shell.	11'-0"
Heating Surface of Tubes.	9523 sq ft
" " Furnaces.	76 "
" " CC tube plates.	29 "
" " back plates.	51 "
" " Top + sides.	95 "
Total heating surface.	12035 sq ft
Graze Area (5-6" bars).	33 sq ft
Steam Space (7 inches above CC).	213.5 cu ft
Graze Area : Heating Surface	1:36.4
" : Steam Space	1:6.5
" : Tube Surface	1:28.8
Working Pressure (Lloyds) lbs per sq in	120
Test Pressure " " " "	240

RIVETING

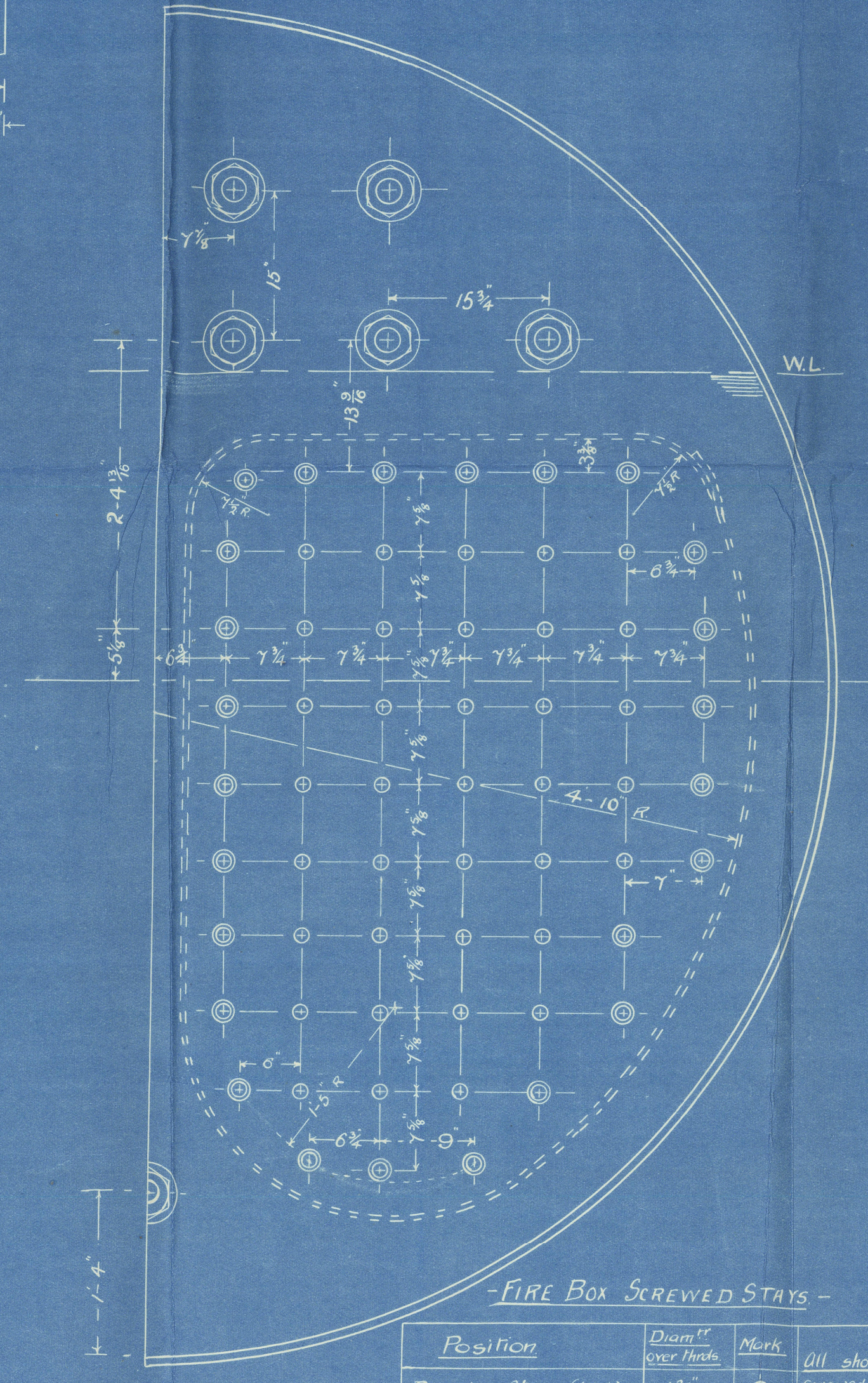
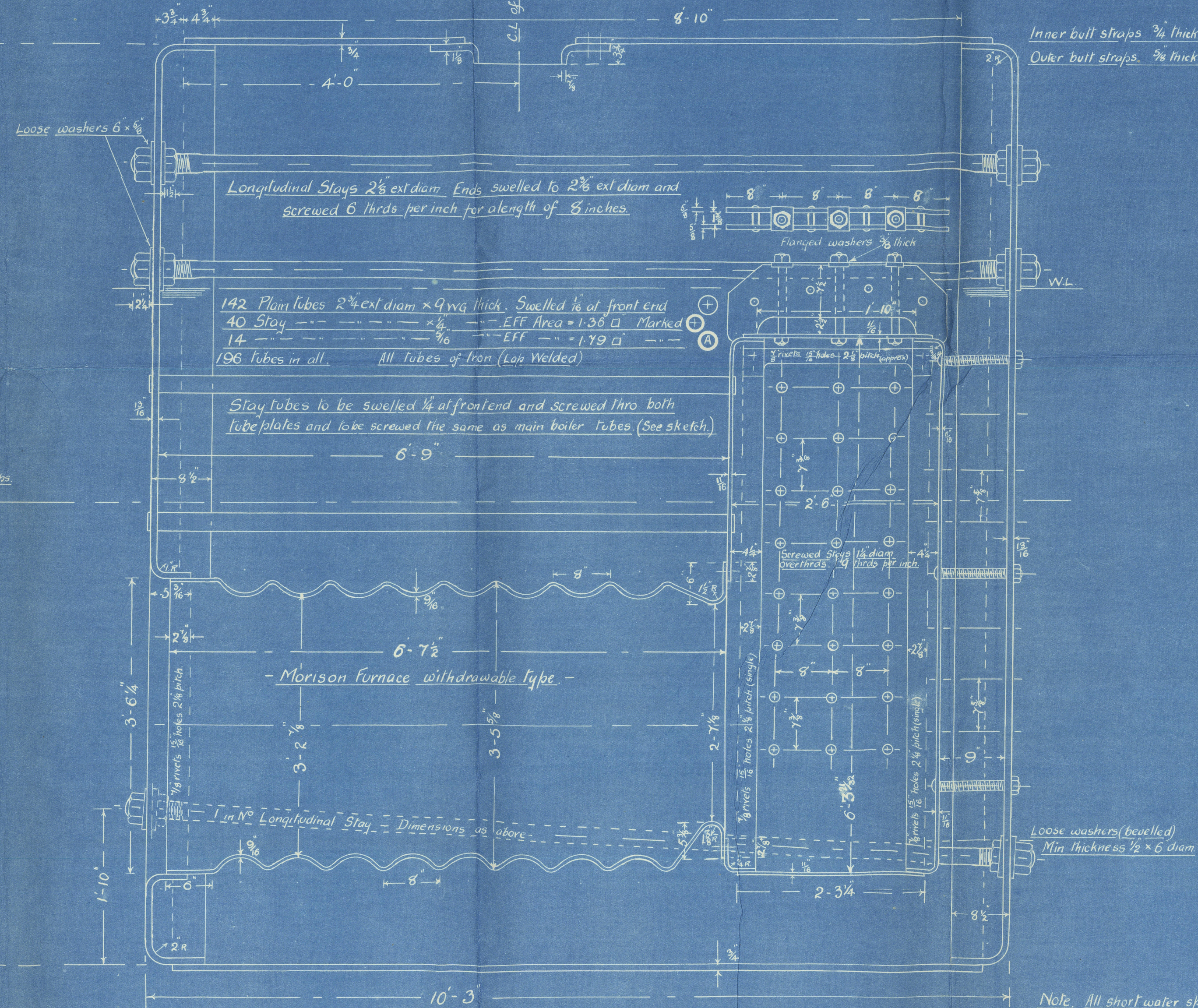
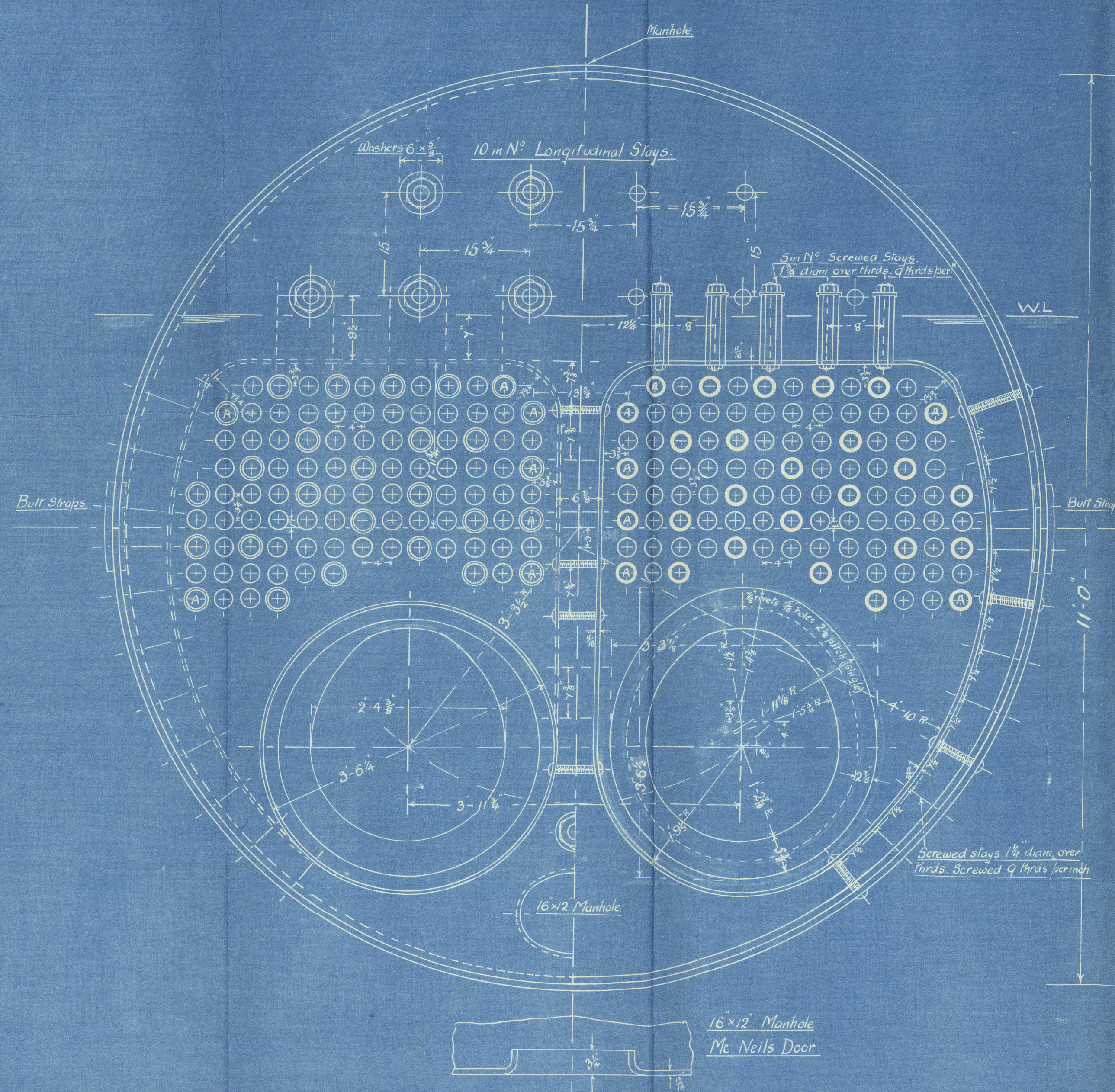
	Longitudinal	Back end Circumf	Front end Circumf
Rivet hole diam	1 1/8"	1 1/8"	1 1/8"
Pitch	6-0625	3-005	3-005
% Plate	84-53	68-75	68-75
% Rivet	101-84	43-9	43-9

LIMITS OF TENSILE STRENGTH + MATERIAL

Shell, butt straps + Girders	28 to 32 tons	Stainless Steel
Other Plates	26 " 30 "	"
Furnaces	26 " 30 "	"
Main Stays	28 to 32 tons	"
Screwed Stays	26 " 30 "	"
Rivet bars	26 " 30 "	"



NOTE: Inner butt straps scarfed to centre line of inner row of rivets. All holes are to be drilled when plates are together and all flanging and riveting where practicable to be done by hydraulic pressure.



-FIRE BOX SCREWED STAYS-

Position	Diam over flange	Mark	All short
Boundary Stays (back) and Girdler Stays	1 3/8"	⊙	Screwed stays to be screwed 9 threads per inch
Remainder of back	1 1/4"	⊙	All others short screwed.

Note: Nuts on all short screwed stays to be 3/8" thick, except on girder tops where the outside nuts are 1 1/8" thick.

Note: All short water space stays, except dog stays, are to be screwed into the plates and rivetted over in the combustion chambers. Nuts are to be fitted on the boiler shell 15 all water space stays except those around of the boiler.

- 8400 TON OILERS -

- Proposed details of Donkey Boiler -
 - Working Pressure 120 lbs per sq in -
 - Scale 1 inch = 1 Foot -

PERFORMED BY J.H.T.
 CHECKED BY E.J.M.

ARRR Keith 11/1/20

2

Oilers Nos 3 & 4

Donkey Boiler

"Nassa" Ply 6185.

RETAIN

Plymouth
23/12/30.

R

© 2020

W493-0123

Lloyd's Register
Foundation