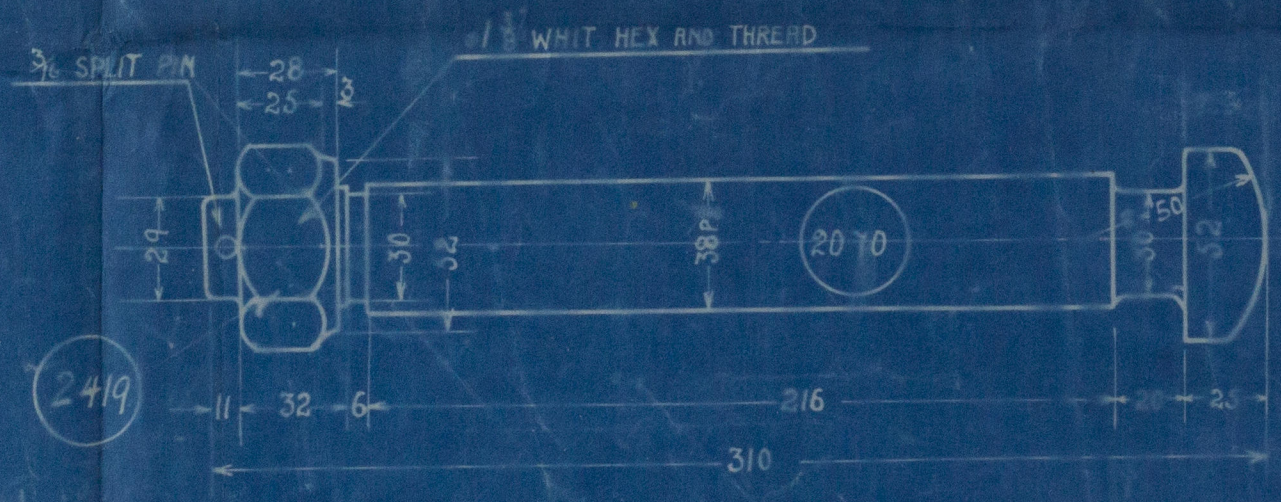
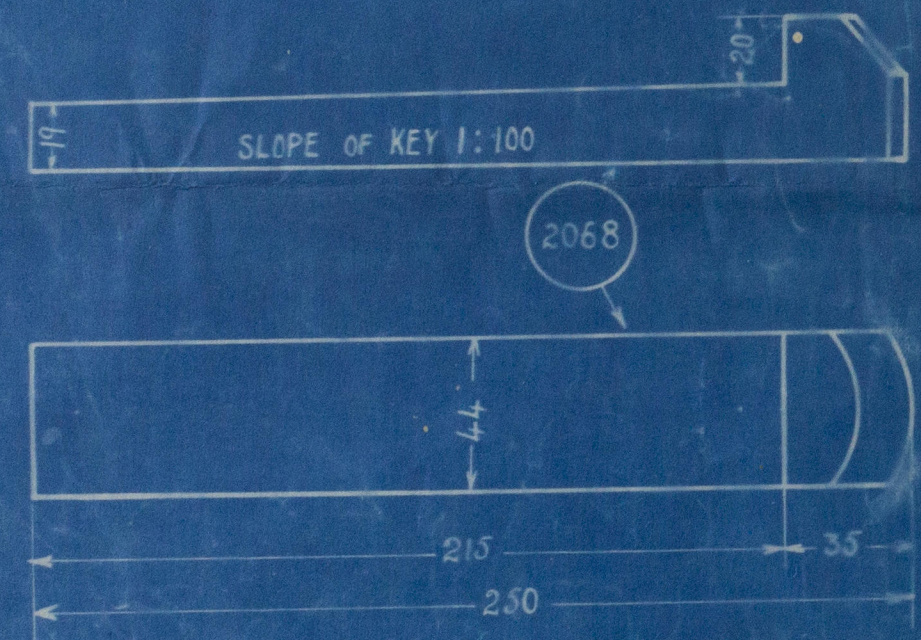
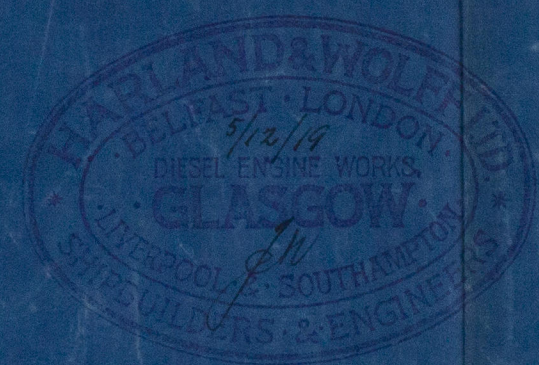


TO LLOYDS REQUIREMENTS AND TESTS. FOR 3000 H.P. TESTS.



N° OFF	DESCRIPTION	MARK	MATERIAL	SHOPS	WEIGHT	JIC, N°
1	CRANKSHAFT	2368	STEEL	SMITHY	920 KG	
2	KEYS FOR FLYWHEEL	2068	"	M.S.	2 "	
1	FEATHER FOR WORMWHEEL	2069	"	MACHINE	0.23 "	
6	BOLTS WITH SPLIT PINS	2070	"	M.S.	3 "	
6	NUTS	2419	"	"		



AUXILIARY
DIESEL ENGINE 3 325
3 350

CRANK SHAFT

SCALE 1:5 - 1:2

NEWALL'S STANDARD GAUGE FOR LIMETS TO BE USED.
WS00-007



Glasgow
Farlan & Wolf Ld
no 603D 604D
Auxiliary Crankshaft
range 4333

Out Plan
T.S.M.S. "LEIGHTON" No 41444.
T.S.M.S. "LINNEL".

GLASGOW REPORT No. 41636

RETAIN



© 2021

Lloyd's Register
Foundation

W500-0077