

24/8/17

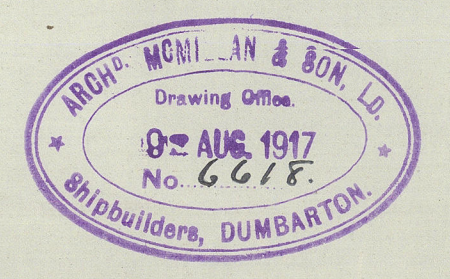
MIDSHIP SECTION

S.S. N° 468.

DIMENSIONS 430-0 BP x 56-0 MLD x 29-6 MLD TO UPPER DK.
37-6 MLD TO SHELTER DK.

TO CLASS 100 A1 AT LLOYDS.

SCALE 1/2" = 1 FOOT.



NOTE: EXPOSED DECK PLATING NOT TO BE JOGGED.

STRINGER PLATE 55" x 28 FOR 1/2 LEN TO 36" x 44 AT ENDS.
STRINGER ANGLE 6" x 6" x 30 FOR 1/2 LEN TO 6" x 6" x 40 AT ENDS.

B MLD = 56'
D MLD = 29.5
85.5 TRANSVERSE N°
430
36765 LONGITUDINAL N°

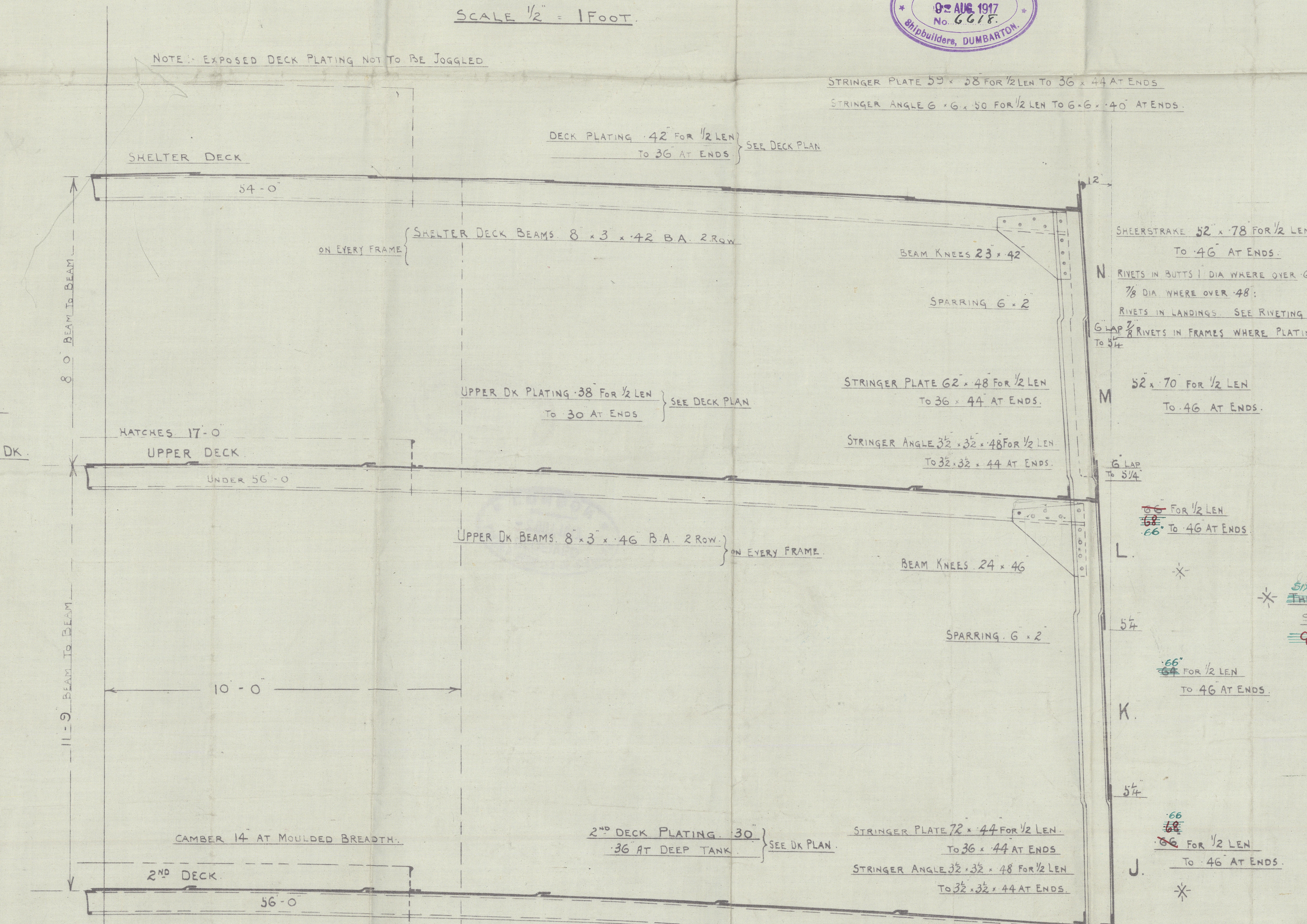
L/D = 14.57 TO UPPER DK.

L/D = 11.46 SHELTER DK.

SHELTER DECK 430-0 x 8-0 x 75 = 2580
HOUSES 183-0 x 8-0 x 5 = 612
LONGITUDINAL N° 36765
EQUIPMENT N° 39957

EQUIPMENT.

- 2 BOWER ANCHORS STOCKLESS - 68 CWTs EACH
- 1 ANCHOR - DO. - 282
- 1 STREAM - EX STOCK - 19
- 1 KEDGE - DO. - 8
- 270 FATHOMS 2 3/16 STUD CHAIN CABLE
- 90 1 3/16 STREAM CHAIN OR 5 STEEL WIRE
- 120 1 1/2 TOWLINE OR 5 1/2
- 2 @ 90 8 OR 3
- 2 @ 90 7 OR 2 1/2



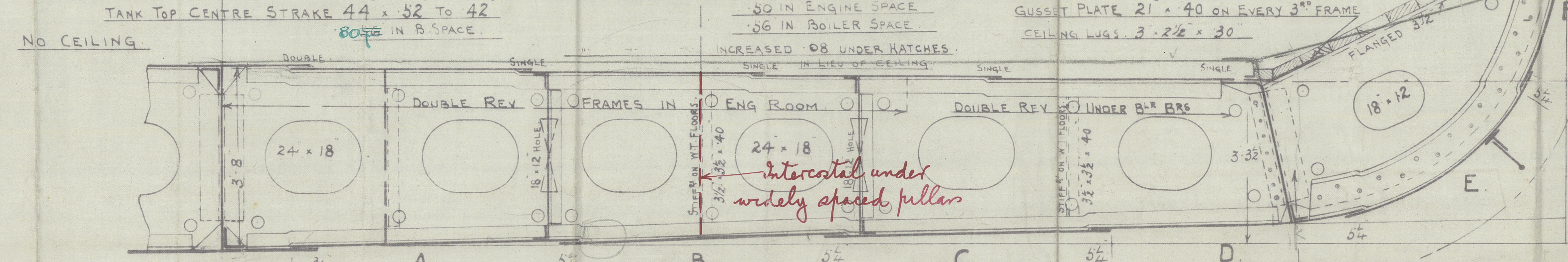
DOUBLE BOTTOM.

CENTRE GIRDER 44" x 52" TO 42" x 60" IN BOILER SPACE.
SIDE GIRDERS 40" TO 36" 50" IN BOILER SPACE.
MARGIN PLATE 34" x 48" ALL FORE & AFT 38" IN B.S.
AND REDUCED AFT OF 38" LEN TO 29"
FLOOR PLATES 40" TO 36" 50" IN BOILER SPACE.
BRACKET PLATES ON INTER FRAMES 40" TO 36" 50" IN BOILER SPACE.
FLOOR END PLATES 40" TO 36" 50" IN BOILER SPACE.
CENTRE GIRDER BOTTOM ANGLE 3 1/2" x 3 1/2" x 48" TO 40" x 48" IN B.S.
TOP ANGLE 3 1/2" x 3 1/2" x 48" TO 40" x 48" IN B.S.
VERTICAL 6" x 6" x 46" FOR 1/2 LEN TO 3 1/2" x 3 1/2" x 40" AT ENDS 6" x 6" x 50" IN B.S.
MARGIN PLATE SHELL ANGLE 3 1/2" x 3 1/2" x 44" ALL FORE & AFT.
TANK FRAMES ON SOLID FLOORS 3 1/2" x 3 1/2" x 42" TO 40" DOUBLE FORE OF 36" LEN.
TANK REVERSE 3 1/2" x 3 1/2" x 42" TO 40" 38" IN B. SPACE.
TANK FRAMES ON ALT FLOORS 7" x 3 1/2" x 40" TO 48" BA 60" IN B. SPACE.
TANK REV 7" x 3 1/2" x 48" TO 36" BA 48" IN B.S.
SIDE GIRDER TOP ANGLES 3 1/2" x 3 1/2" x 42" TO 40" 38" IN B.S.
BOTTOM 3 1/2" x 3 1/2" x 42" TO 40" 38" IN B.S.
VERTICAL ON SOLID FLOORS 3 1/2" x 3 1/2" x 40" 38" IN B.S.
ON ALT 7" x 3 1/2" x 36" TO 36" BA 48" IN B.S.
MARGIN PLATE VERTICAL ANGLES (INSIDE) 3 1/2" x 3 1/2" x 42" TO 40" 38" IN B.S. 3 1/2" x 3 1/2" x 40" AFT OF ENG RM.
(OUTSIDE) 6" x 6" x 44" TO 42" 38" IN B.S. 6" x 6" x 40"
ADDITIONAL SIDE GIRDER IN WAY OF ENGINE SEATING. NOTE: 10 MANHOLES TO BE CUT IN FLOORS OR INTERCOSTALS UNDER WIDE SPACED PILLARS.
INTERMEDIATE VERTICAL STIFFENERS ON W.T. FLOORS.

SIDE FRAMES EX PEAKS 9" x 3 1/2" x 42" BA
ALL SPACED 26" 2" APART EXCEPT IN PEAKS.
BA FRAMES CARRIED TO UPPER DECK & SHELTER DECK ALTERNATELY.
INTER FRAMES IN SHELTER TWEEN DAS 3 1/2" x 3 1/2" x 42" ANGLE.
FRAMES IN FORE & AFT PEAKS 8" x 3" x 44" BA 24" APART.
N° 1, 2 & 3 FRAMES IN AFT PEAK 6" x 3 1/2" x 40" ANGLE REVERSE.
BAR 3 1/2" x 3 1/2" x 46" TO UPPER DK. 24" APART 62" GIRDER.

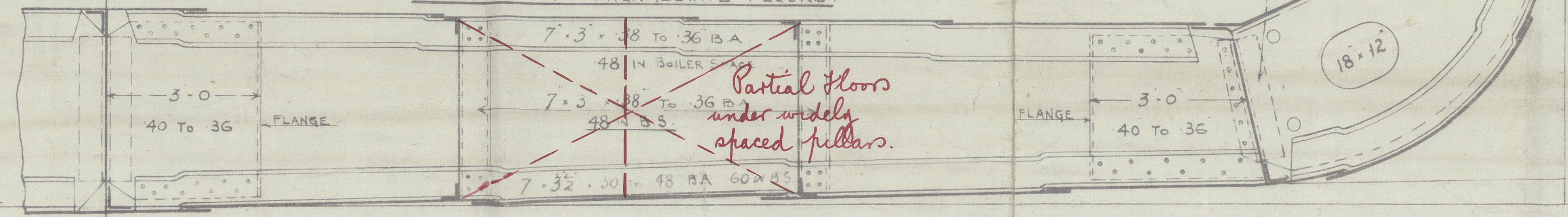
FLOORS IN PEAKS 40" FLANGED 3" ON TOP.
TRANSOM FLOOR 48" x 48"
STEM 10 1/2" x 2 3/4" STERN POST 10 1/2" x 8" x 9" 8"
RUDDER STOCK SEE PLAN

SIDE STRINGER ANGLE 8" x 3" x 46" BA
PLATES 44"
SHELL ANGLES 3 1/2" x 3 1/2" x 44"
LUGS 5" x 3" x 44"
GUSSET PLATE 21" x 40" ON EVERY 3" FRAME
CEILING LUGS 2" x 2 1/2" x 20"



KEEL PLATE 48" x 1-06"
FOR 1/2 LEN TO 74" (NO DOUBLING)
BOTTOM PLATING A TO E 66" FOR 1/2 LEN TO 48" AT ENDS.
REDUCED .02 IN WAY OF DOUBLE BOTTOM ONLY WHERE SOLID FLOORS ARE ON EVERY FRAME.
MIDSHIP THICKNESS MAINTAINED FOR COLLISION B.H.

SECTION AT INTERMEDIATE FLOORS.



SOLID FLOORS ON EVERY FRAME UNDER ENGINES & FOR 3/8" LEN AT FORE END.

RIVETING

- KEEL PLATE BUTTS OVERLAPPED & QUAD RIV WHERE OVER 76" REMAINDER TREBLE.
- BUTTS OF A TO E STRAKES OVERLAPPED & QUAD RIV WHERE OVER 60" INSIDE 1/2 LEN REMAINDER TREBLE.
- BUTTS OF F TO L STRAKES OVERLAPPED & TREBLE RIV THROUGHOUT.
- BUTTS OF M STRAKE OVERLAPPED & QUAD RIV WHERE OVER 60" INSIDE 1/2 LEN REMAINDER TREBLE.
- BUTTS OF SHEERSTRAKE OVERLAPPED & QUAD RIV WHERE OVER 68" REMAINDER TREBLE.
- SHELL LANDINGS DOUBLE RIV ALL FORE & AFT.
- SHELTER DECK STRINGER BUTTS OVERLAPPED & TREBLE RIV THROUGHOUT.
- UPPER DECK STRINGER BUTTS OVERLAPPED & TREBLE RIV THROUGHOUT.
- SECOND DECK STRINGER BUTTS OVERLAPPED & TREBLE RIV THROUGHOUT.
- SHELTER DECK PLATING BUTTS OVERLAPPED & DOUBLE RIV FOR 1/2 LEN REMAINDER SINGLE.
- UPPER DECK PLATING BUTTS OVERLAPPED & DOUBLE RIV FOR 1/2 LEN REMAINDER SINGLE.
- SECOND DECK PLATING BUTTS OVERLAPPED & SINGLE RIV FORE & AFT.
- ALL DECK LANDINGS SINGLE RIV.
- TANK TOP CENTRE STRAKE BUTTS OVERLAPPED & TREBLE RIV WHERE OVER 48" REMAINDER DOUBLE.
- PLATING BUTTS OVERLAPPED & DOUBLE RIV FOR 1/2 LEN SINGLE AT ENDS.
- MARGIN PLATE OVERLAPPED & TREBLE RIV FOR 1/2 LEN & DOUBLE AT ENDS.
- CENTRE GIRDER PLATE OVERLAPPED & TREBLE RIV THROUGHOUT.

RIVETS IN SHELL BUTTS

IN BUTTS OF KEEL PLATE RIVETS TO BE 1 1/8" DIA WHERE OVER 88" & WHERE OVER 66" TO BE 1" DIA.
IN BUTTS OF SHELL PLATES WHERE OVER 48" TO BE 7/8" DIA & WHERE 48" AND UNDER 3/4" DIA.
IN BUTTS OF SHEERSTRAKE RIVETS TO BE 1" DIA WHERE OVER 66" & WHERE OVER 48" TO BE 7/8" 3/4" ELSEWHERE.

RIVETS IN SHELL LANDINGS

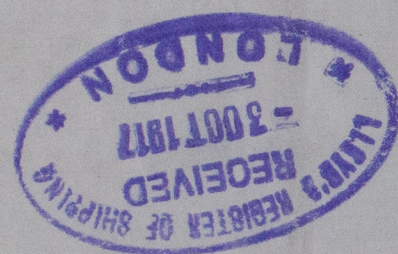
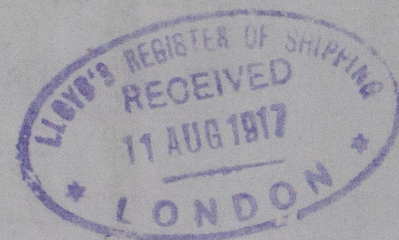
IN LANDINGS OF KEEL WHERE OVER 88" TO BE 1 1/8" DIA LANDINGS 6 3/4" WIDE WHERE OVER 66" TO BE 1" DIA LANDINGS 6" WIDE.
IN LANDINGS OF SHELL PLATES WHERE OVER 66" TO BE 1" DIA LANDINGS 6" WIDE WHERE OVER 48" TO BE 7/8" DIA LANDINGS 5 1/2" WIDE WHERE 48" & UNDER 3/4".

RIVETS THROUGH FRAME & SHELL 6" DIAS APART.
(IN DEEP TANK & PEAK BALLAST TANKS 5 1/2" DIAS APART.)
ALSO IN BOTTOM FOR 3/8" LEN.

A. McMillan & Son, Ltd.

N. 468.

Midship Section



BUILDERS. A. McMILLAN & SON

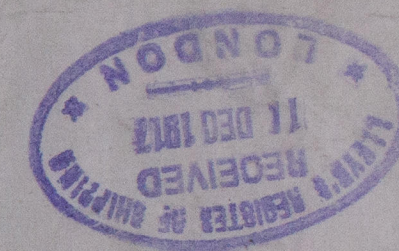
YARD NO. 468

PLAN.

MIDSHIP SECTION

SHIP'S NAME, Laplace

GLASGOW REPORT NO. 3856 H



W51-0022



© 2021

Lloyd's Register
Foundation