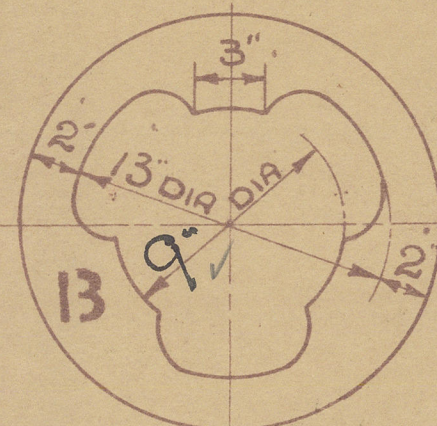


Hand-drawn technical drawing of a mechanical part, likely a propeller or fan blade, showing dimensions and construction details. The drawing is oriented vertically on a piece of paper.

Dimensions and Features:

- Top Section:** A rectangular section with a width of $2'-9"$ and a height of $32"$. It is divided into three vertical sections with widths of $17"$, $18"$, and $12"$.
- Internal Features:** A central vertical slot with a width of $9"$. A horizontal slot with a width of $3\frac{1}{2}"$ is located near the top. A horizontal slot with a width of $3\frac{1}{2}"$ is located near the bottom.
- Curved Sections:** Two curved sections are shown, each with a radius of $12"$ RAD. The top curved section has a height of $17"$. The bottom curved section has a height of $12"$.
- Bottom Section:** A rectangular section with a width of $4'-4"$ and a height of $8\frac{1}{2}"$. It is divided into three vertical sections with widths of $5\frac{1}{2}"$, $3"$, and $3\frac{1}{2}"$.
- Other Dimensions:** A vertical dimension of $3\frac{1}{2}"$ is shown on the left side. A vertical dimension of $3\frac{1}{2}"$ is shown on the right side. A vertical dimension of $3\frac{1}{2}"$ is shown on the right side. A vertical dimension of $3\frac{1}{2}"$ is shown on the right side.

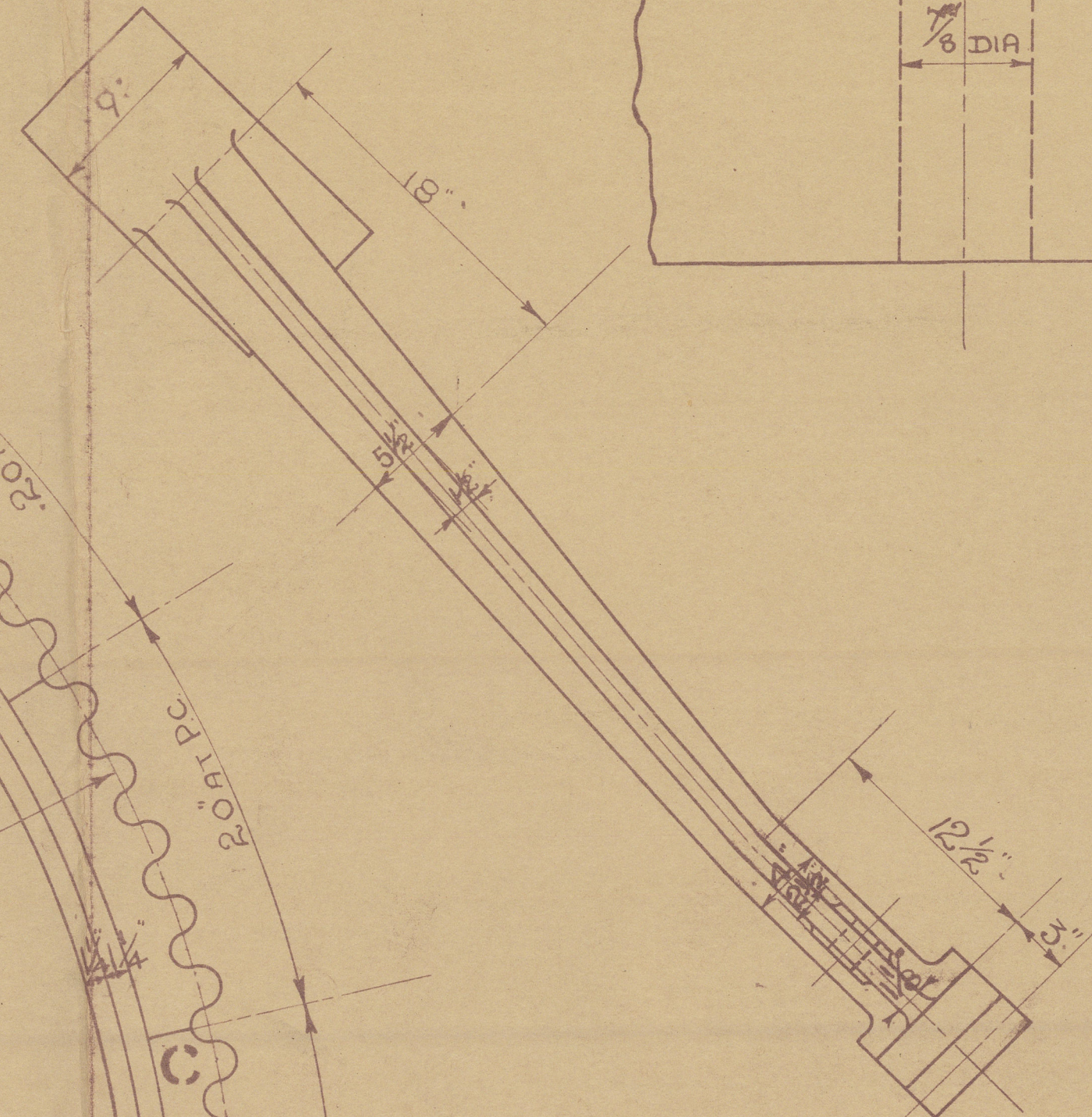
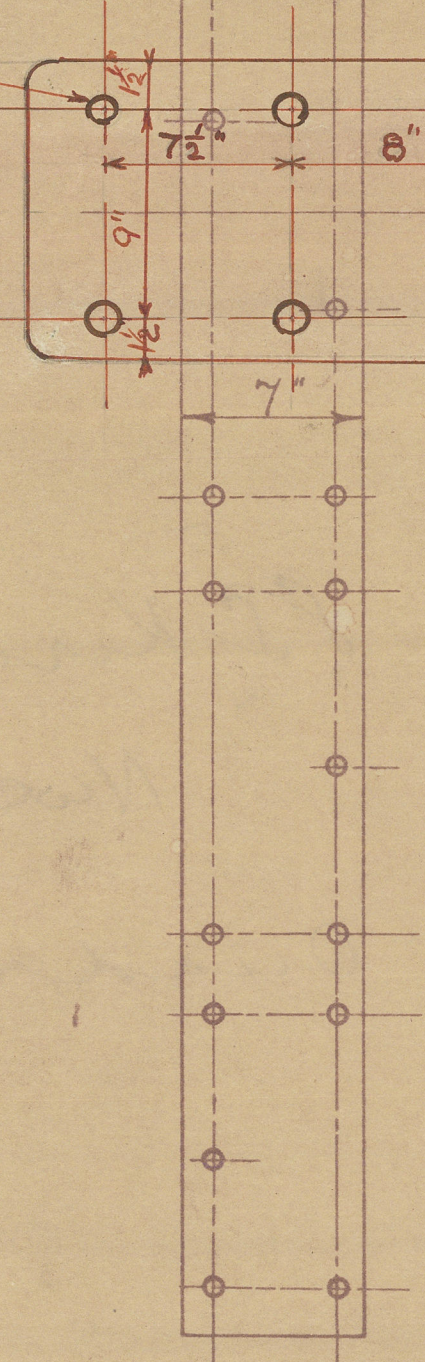
17" DIA



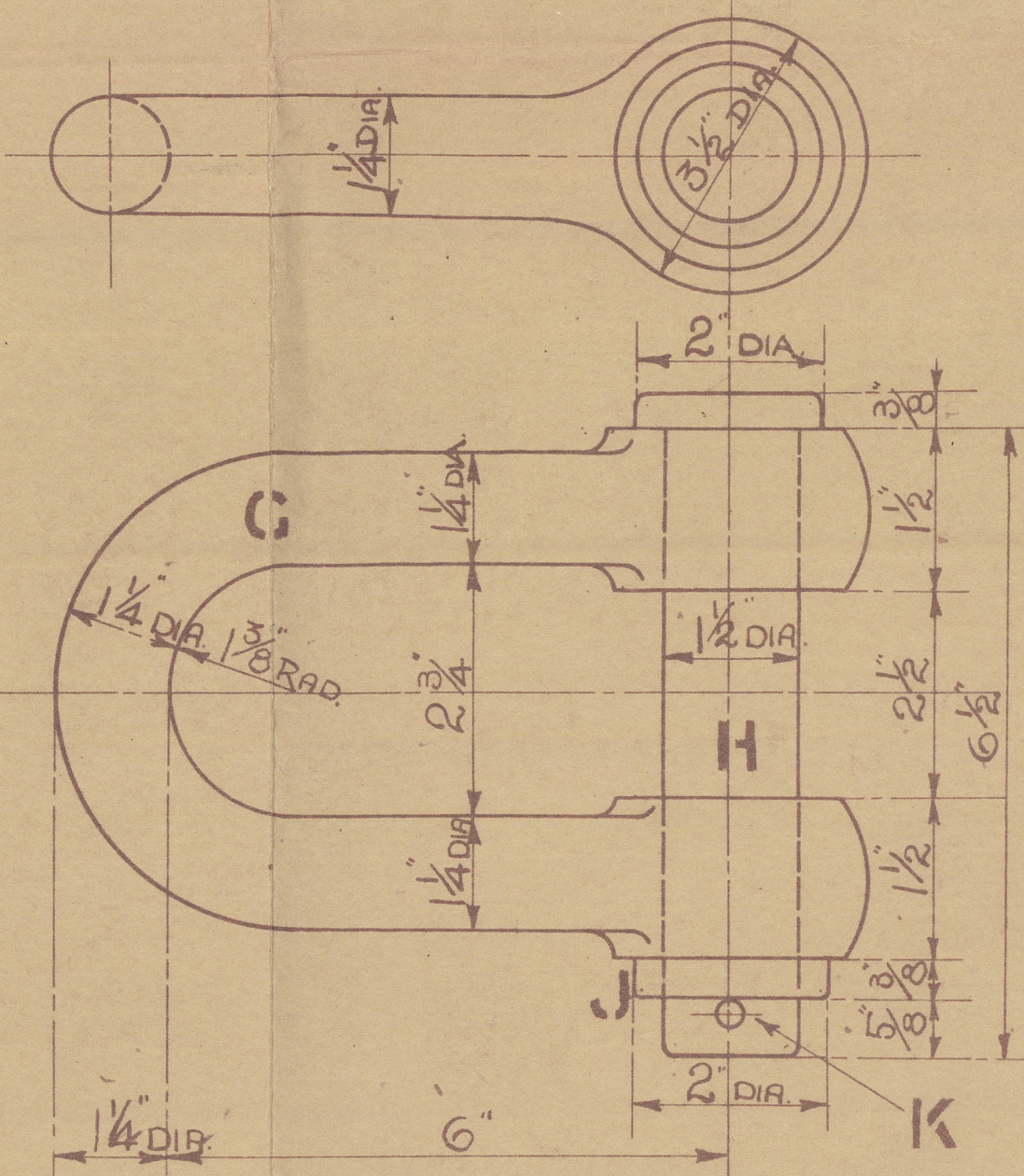
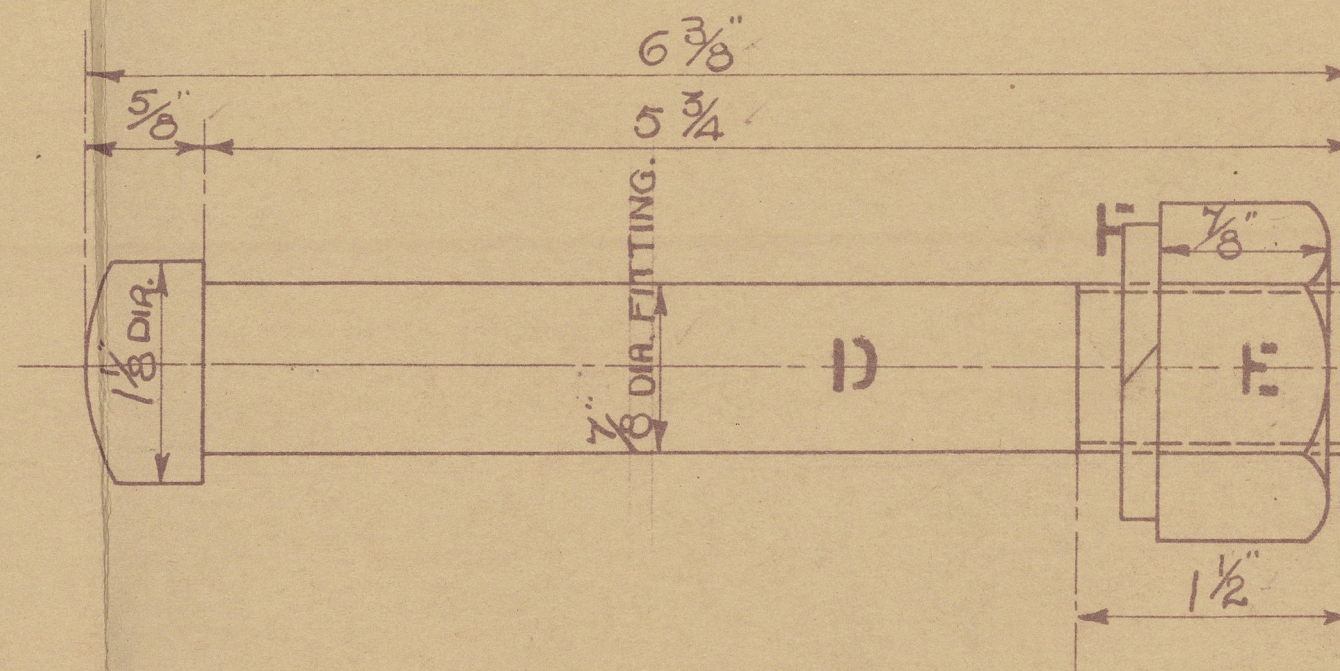
A technical drawing of a cross-shaped mechanical part. The vertical stem has a total length of 5 1/2 inches and a width of 1 1/2 inches at its base. The horizontal arm has a width of 1 1/2 inches. The central intersection area is shaded with diagonal hatching. A checkmark is visible to the right of the drawing.

Diagram of a rectangular plate with dimensions $1\frac{1}{8}$ inches by $4\frac{3}{4}$ inches by $1\frac{1}{8}$ inches. The plate has a central vertical dashed line and two horizontal dashed lines. There are six circular holes: two on the left side, two on the right side, and two in the center. An arrow points to the top-left hole.

$1\frac{1}{8}$ " DIA FITTING BOLTS



FULL SIZE SECTION OF TEETH.

[illegible]

5-0 $\frac{5}{8}$ " RADIUS QUADRANT.

SCALE:- $\frac{1}{2}$ ", 6" & 12" = 1 FOOT

27-2-35.

DONKIN & Co., LTD.
ENGINEERS,
WALKER GATE,
NEWCASTLE ON-TYNE
No. 54.444 27/4/37

MARK.	NO OFF.	DESCRIPTION.	MATERIAL	WHERE OBT.	PATT. NO.
A	ONE	QUADRANT	CAST STEEL	CASTING	5455A
B	ONE	WASHER	GUN METAL	"	—
C	FIVE	SEGMENT.	CAST IRON	"	2253
D	26	$\frac{1}{8}$ " FITTING BOLT.	STEEL BAR	STORES	—
E	26	$\frac{1}{8}$ " NUT S.C.	"	"	—
F	26	$\frac{1}{8}$ " SPRING WASHER	STEEL	"	—
G	TWO	SHACKLE.	STEEL BAR	FORGING	—
H	TWO	" PIN.	"	STORES.	—
J	TWO	WASHER.	"	"	—
K	TWO	SPLIT PIN.	"	"	—

DRAWING N^o ~~802~~ ⁴⁶⁹ _{36 31} FOLIO N^o 230.

W51-0128

J. L. Kinnwood

New Ref. No. 95156.

Quadrant.

W/51- 0128

DRAWING No. ~~36~~ ⁴⁰⁴ 36.31 FOLIO No. 230.



© 2021

Lloyd's Register
Foundation