

16.1.30



N^{os}. 1001-2. MIDSHIP SECTION.

SCALE $\frac{1}{2}$ " = 1 FOOT.

DIMENSIONS:- 470'-0" B.P. x 63'-6" B.M.⁰ x 34'-9" DEPTH M.⁰

CLASS +100 A.I. (ISHERWOOD COMBINATION SYSTEM),

CARRYING PETROLEUM IN BULK.

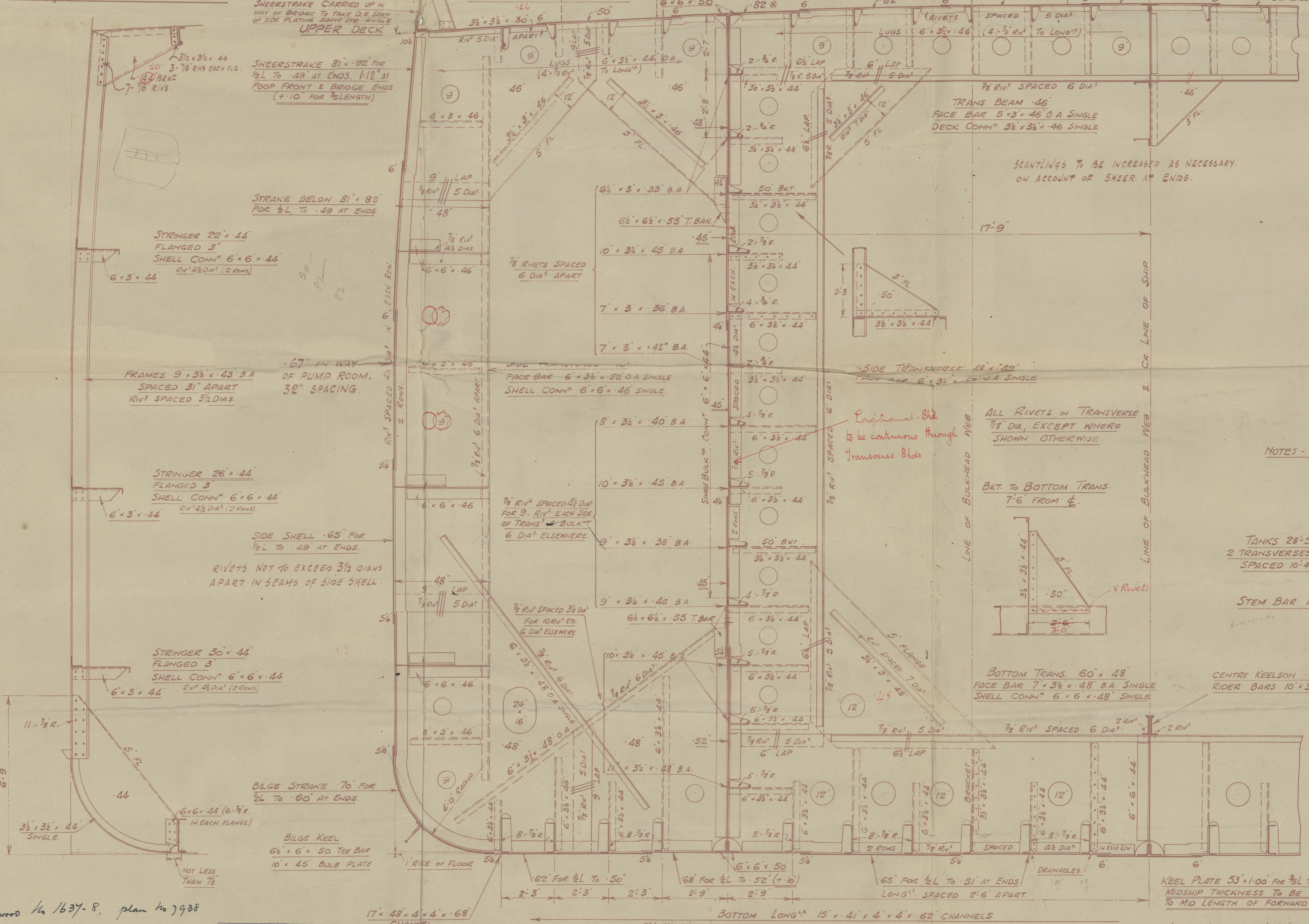
LLOYDS NUMERALS:-

L x D 16332.5

L x (B+D) 46177.5

L ÷ D 13.52

SPECIAL NOTATION. LONGITUDINAL FRAMING AT BOTTOM,
AT DECK, & AT LONGITUDINAL BULKHEADS



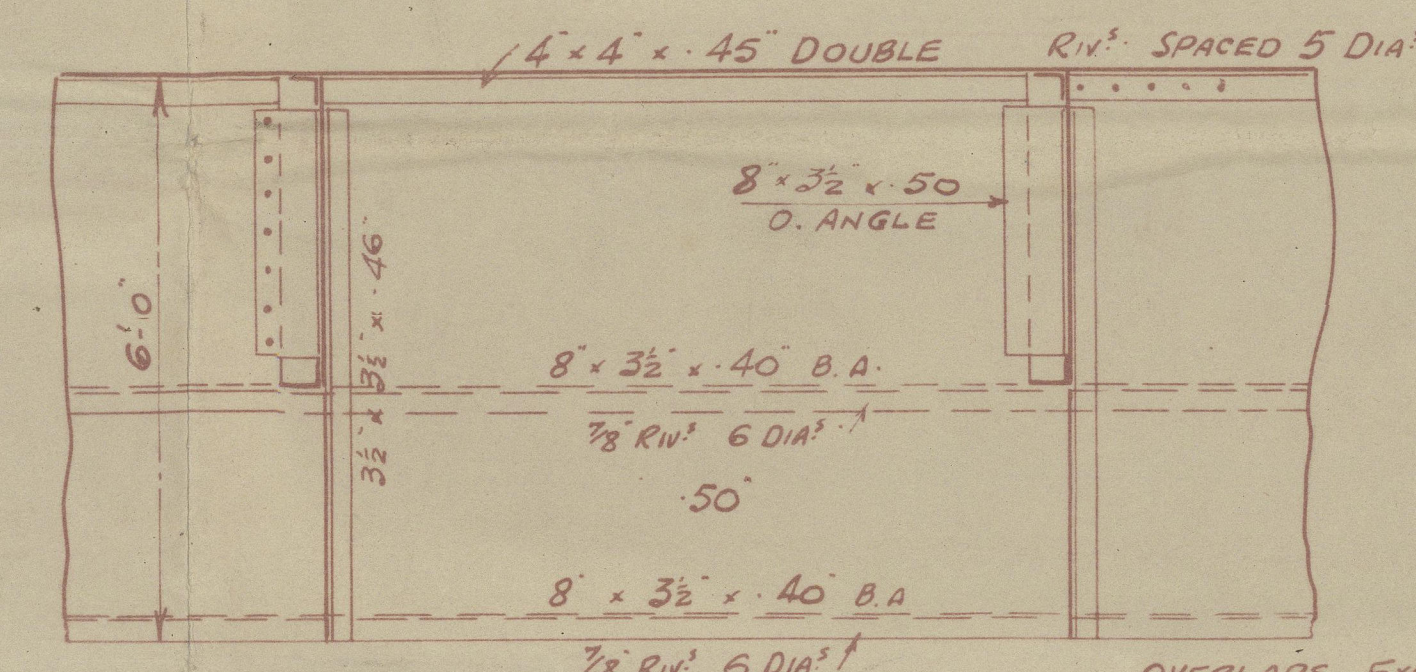
—LOOKING FORWARD—

NOTE:- OWNERS EXTRAS & SCANTLINGS
AS PER SPECIFICATION INDICATED
BY A DOUBLE UNDERLINE.

EQUIPMENT. N^o 47719.5

2 BOWER ANCHORS	STOCKLESS	8 1/4 CENTS.	} + 10%
1 " ANCHOR		69 1/2 "	
1 STREAM	EX STOCK	23 1/2 "	
300 FATHOMS	2 1/2 "	STUD LINK CHAIN GABLE	
120 "	5 1/4 "	STEEL WIRE STREAM	
130 "	6 "	TONLINE	
4 @ 100 FMS	8 "	MANILLA WARPS	
2 @ 90 "	3 1/2 "	STEEL WIRE	
2 @ 90 "	2 1/2 "		

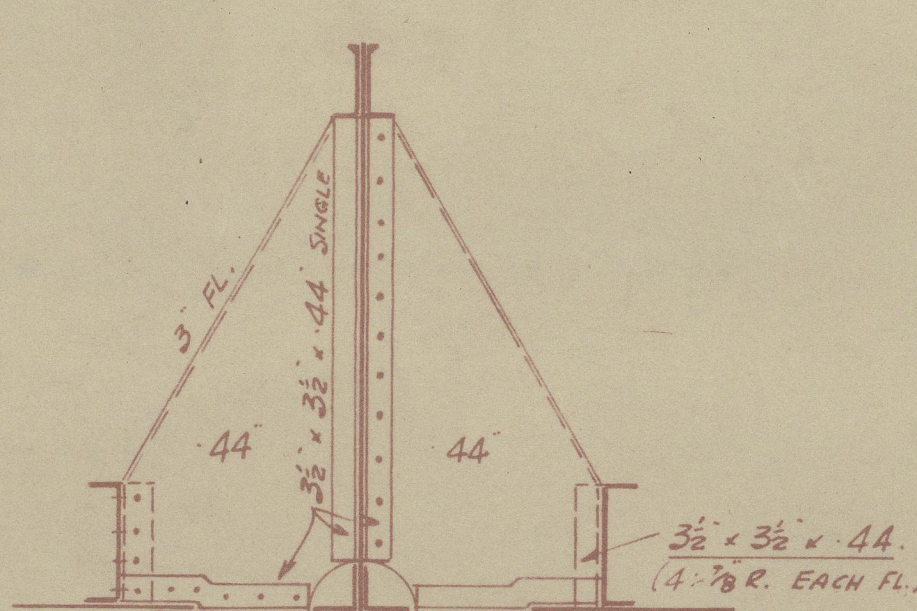
PART ELEVATION OF D^o GIRDER ON $\frac{1}{2}$



RIVETING.		
BUTTS OF KEEL	DOUBLE STRIPS TREBLE RIVETED	ENDS
" SHELL (KEEL TO LOWER TURN OF BILGE)	QUAD.	TREBLE
" " (UPPER TURN OF B. TO STRAKE BELOW SHEERSTRAKE)	QUAD.	TREBLE
" BILGE STRAKE	QUAD.	TREBLE
" STRAKE BELOW SHEERSTRAKE	QUINTUPLE	"
" SHEERSTRAKE	QUINTUPLE	"
" POOP SIDE	DOUBLE	
" BRIDGE SIDE	DOUBLE	
" F.C.L.E. SIDE, STRINGER & PLATING	SINGLE	
" UPPER D ^o STRINGER	QUAD.	TREBLE
" " PLATING	QUAD. ABOVE 68	TREBLE
" " BOTTOM STRAKE OF LONG ^o BHD.	TREBLE	
" " LONG ^o BHD. PLATING EXCEPT BOTTOM STRAKE	DOUBLE	
" " POOP & BRIDGE SIDE PLATING	SINGLE	
SEAMS OF SHELL. ALL FORE & AFT	DOUBLE	
" " UPPER D ^o PLATING	DOUBLE	SINGLE
" " LONG ^o BULK ^o	DOUBLE	
" " POOP & F.C.L.E. SIDES	SINGLE	
" " P.B. & F.C.L.E. D ^o PLATING	SINGLE	
" " BRIDGE SIDE PLATING	DOUBLE	

NOTES:- HOLES FOR LONG^o TO BE BLOCK PUNCHED.
DRAINHOLES IN BOTTOM SHELL LONG^o 2" DIA. SPACED 2'-0" APART.
DRAINHOLES IN LONG^o ELSEWHERE 1 1/2" DIA. SPACED 1'-0" APART.
ALL BULB ANGLES 9" & ABOVE ARE NEW BRITISH STANDARD.

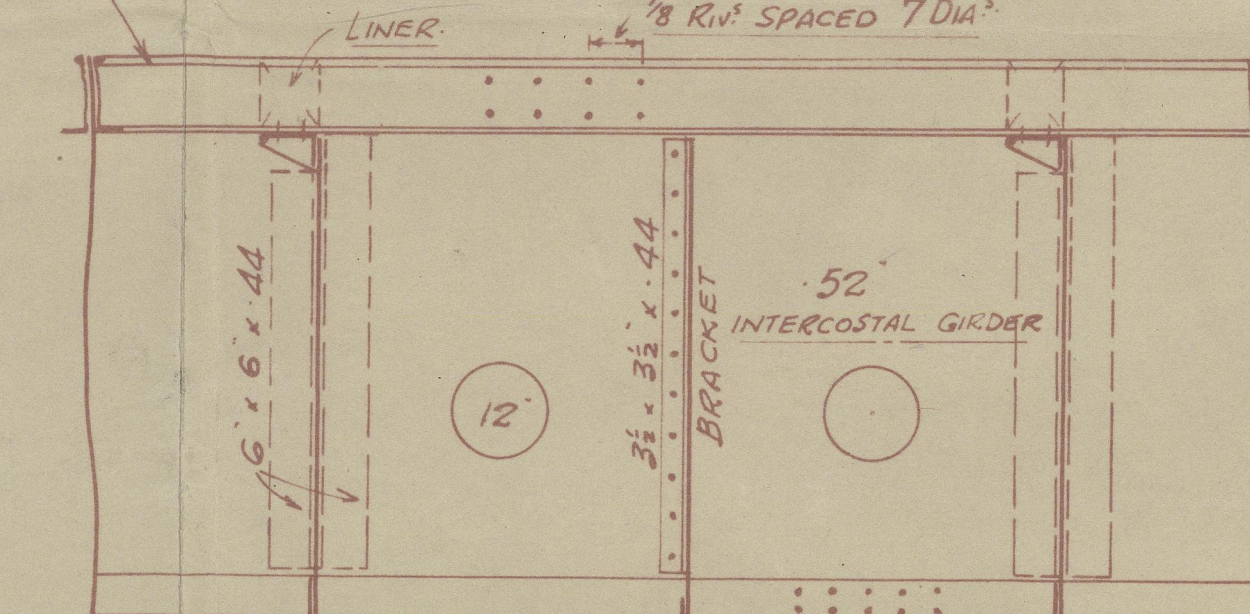
CENTRE KEELSON BKT^o



TANKS 28'-5" LONG
2 TRANSVERSES IN EACH TANK
SPACED 10'-4", 7'-9", 10'-4"

STEM BAR 10 1/2" x 2 3/4"

CENTRE KEELSON .52"
RIDER BARS 10 x 3 1/2" x 50" B.A. DOUBLE.



PART ELEVATION OF CR. KEELSON

Approved by 1637-8, plan No 7928

10.1.30

SIR JOSEPH W. ISHERWOOD & CO. LTD.,
4, LLOYDS AVENUE,
LONDON, E.C.3.
FOR ENCLOSURE TO
DATE 10.1.30

2

1001/2

Palmer's

1001 + 1002

Midship Section

2nd approval

14. V "CHEYENNE"

NEWCASTLE ON TYNE.

Report No. 86471.

REMAIN



© 2020

Lloyd's Register
Foundation

W 810-0276