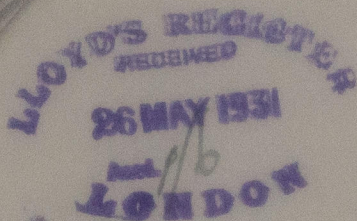




Lloyd's Register of Shipping,

3, Steinhoeft,

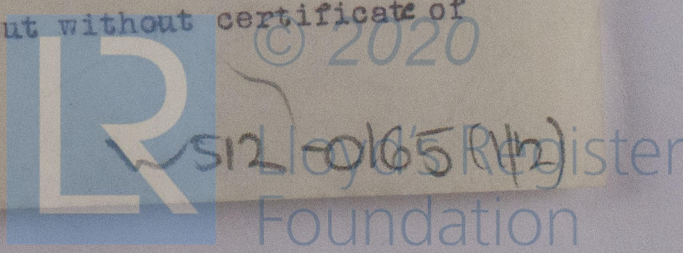
Hamburg, 23rd May, 1931.



Dear Sir,

Reverting to previous correspondence regarding the case of the s.s. " GARDENGA " which is proposed to/^{be} submitted of survey with a view to the classification in the Society's Register Register Book I have to advise you that the vessel has been purchased by Lieutenant Commander R.G. Wardrop and has been towed to the Arminius Werft, Bodenwerder on the Weser where the repairs, alterations and survey for classification will be carried out. Plans have been prepared by the Arminius Werft along the lines indicated in the official correspondence regarding the case. Duplicate copies of plans are being forwarded today under separate cover for the Committee's approval. It will be observed that the Arminius Werft propose to retain the original stringer plates 600 x 7 mm, and a steel deck 6 mm in thickness is to be fitted all fore and aft. Alterations to the stem at the foreend^{as shown} in order to provide an accommodation for the crew in the forecastle.

Particulars of the equipment of anchor and cables are now proposed. With regard to the material to be used in carrying out the alterations and repairs the Yard has only material made at approved works, but without certificate of



test of this Society. The material having been supplied with
maker's Certificate. In the circumstances and as the maker Certi-
ficate is from the Vereinigten Stahlwerken it is proposed to make
tensile and bend test on samples cut from plates and angles on
an approved testing machine. The Bremen Surveyors are being
instructed in regard to carrying out the survey but plans
should be retained by to this Office. I should be glad to learn
what fee should be charged for the classification in this
case.

I am, Dear Sir,

Yours faithfully

A. Christy.

The Secretary,

London.

RECEIVED
12th JAN 1905
BY THE SECRETARY
OF THE SOCIETY
OF MARINE ENGINEERS
AND MECHANICAL ENGINEERS
LONDON

Referred to the Chief Ship Surveyor,
and the Chief Engineer Surveyor.

26 MAY 1931

Also for Mr. Carey to note.

Spil
1

addition