

21.11.12  
29.11.12  
6.1.13  
18.1.13  
24.1.13  
19.2.13  
19.4.13  
28.4.13

S.S. No 57.

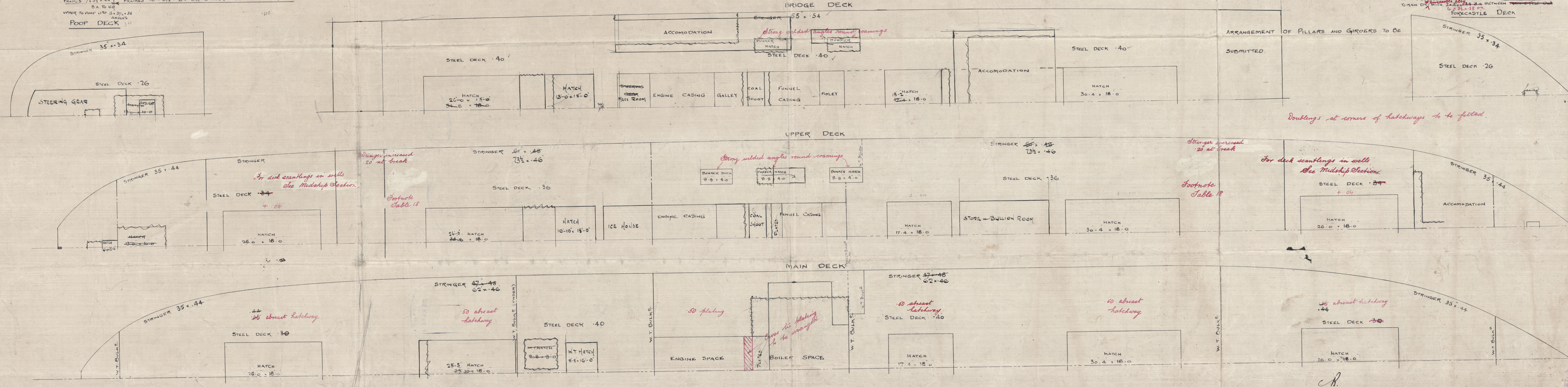
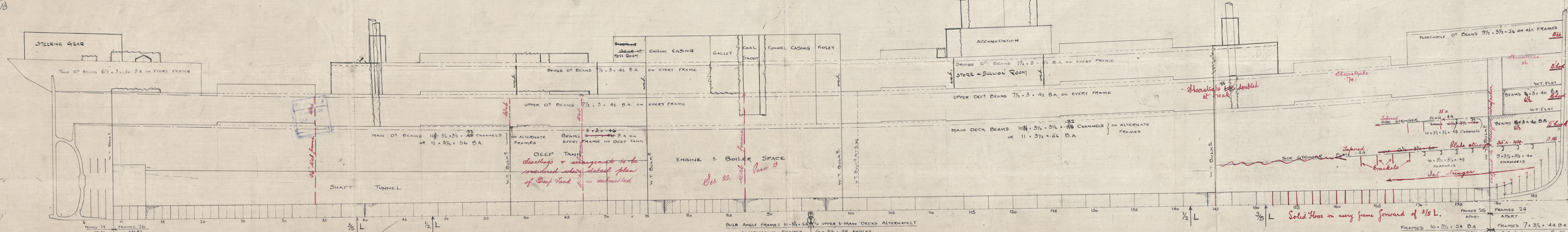
PROFILE & DECK PLAN

DIMENSIONS 405-0 B.P. x 51-9 1/2 ML x 30-6 ML

SCALE 1/8" = 1 FOOT

TO CLASS 100 A.I. LLOYDS WITH LONG BRIDGE

Detail plan of decks to be submitted.



C.R.  
21.11.12.





N. I.  
RE  
251

N. I. S. Co. L.P.  
RECEIVED  
5 DEC. 1912

5



© 2021

Lloyd's Register  
Foundation



LLOYD'S REGISTER OF SHIPPING  
RECEIVED  
29 NOV 1912  
LONDON

M. I. S. Co. Ld  
RECEIVED  
25 NOV 1912

LLOYD'S REGISTER OF SHIPPING  
RECEIVED  
20 NOV 1912  
LONDON



© 2021

Lloyd's Register  
Foundation

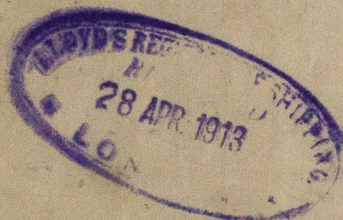
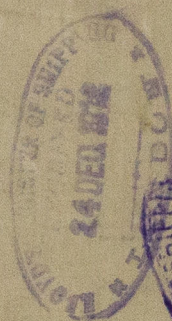
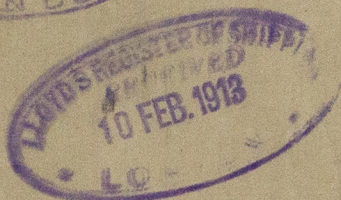
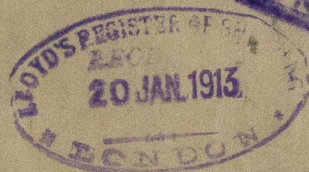


NORTH OF IRELAND S.B. Co

Nº 57

PROFILE AND DECK PLAN

LLOYDS APPROVED PLAN



M. "Lamot De Port"  
ex  
"SAN FRANCISCO"  
Bel. 7381.

WS2-0047

LLOYDS APPROVED PLAN



© 2021

Lloyd's Register  
Foundation