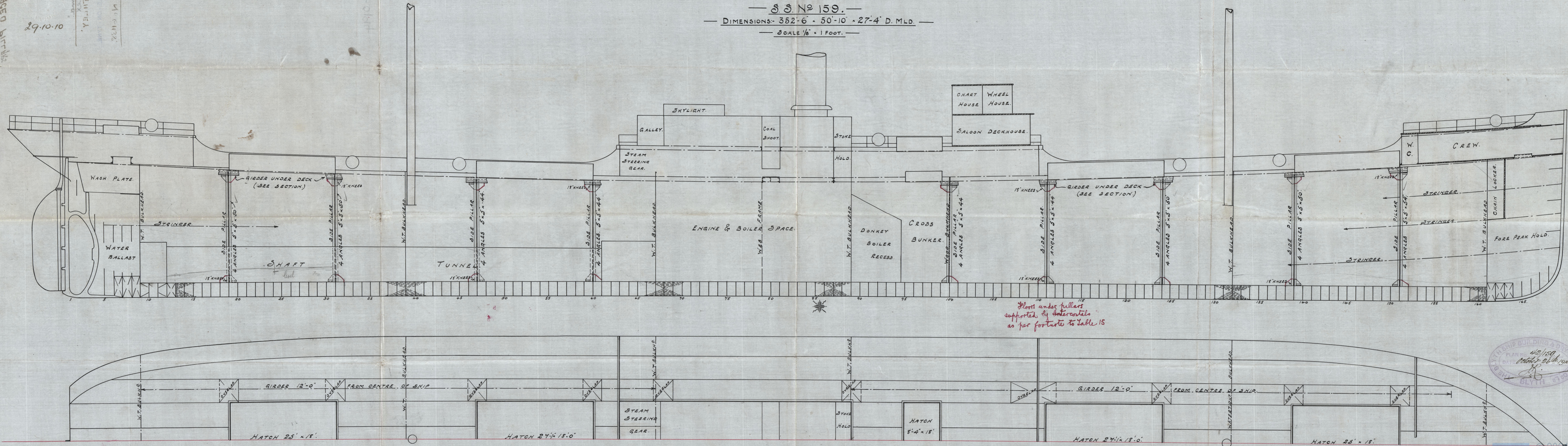


MS2-0194

WIDE SPACED BIRCHES.
BLYTH 22 120
29.10.10
MS2-0194

— SKETCH SHEWING PROPOSED ARRANGEMENT OF WIDE SPACED PILLARS IN HOLDS. —

— S.S. No 159. —
— DIMENSIONS: 352'-6" x 50'-10" x 27'-4" D. MLD. —
— SCALE 1/8" = 1 FOOT. —



Floors under pillars supported by intercostals as per footnote to Table 15

SHIP BUILDING & DRY DOCK
42/159
October 26th 1910
BLYTH

BLYTH. S.S. 159
PROFILE SHOWING
WIDE SPACED PILLARS



01.01.28

"Kyma."

EX

S.S. "ROTHLEY"

NEWCASTLE-ON-TYNE.

REPORT No 61138.

M25-0184



© 2021

Lloyd's Register
Foundation

W52-0114