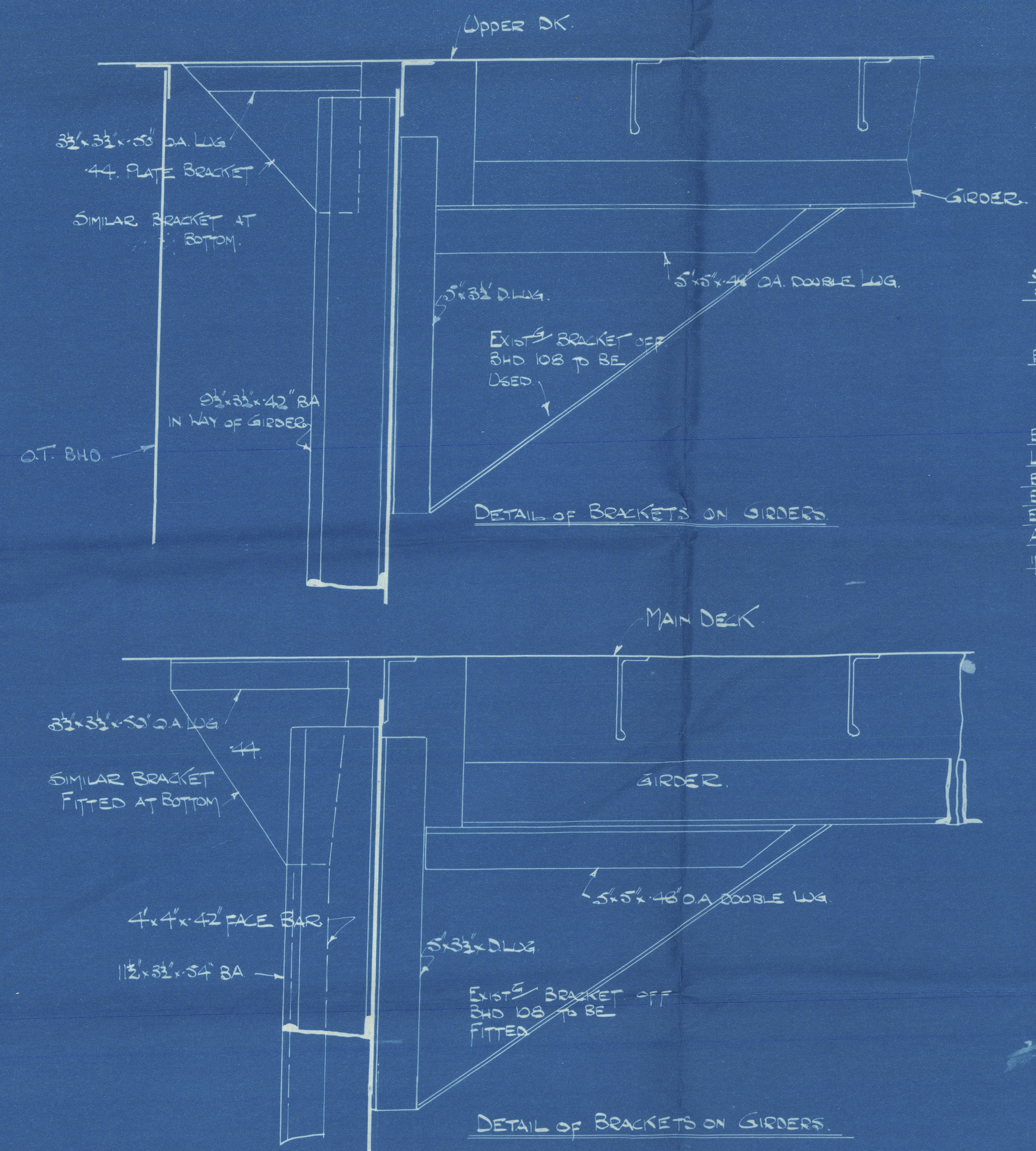
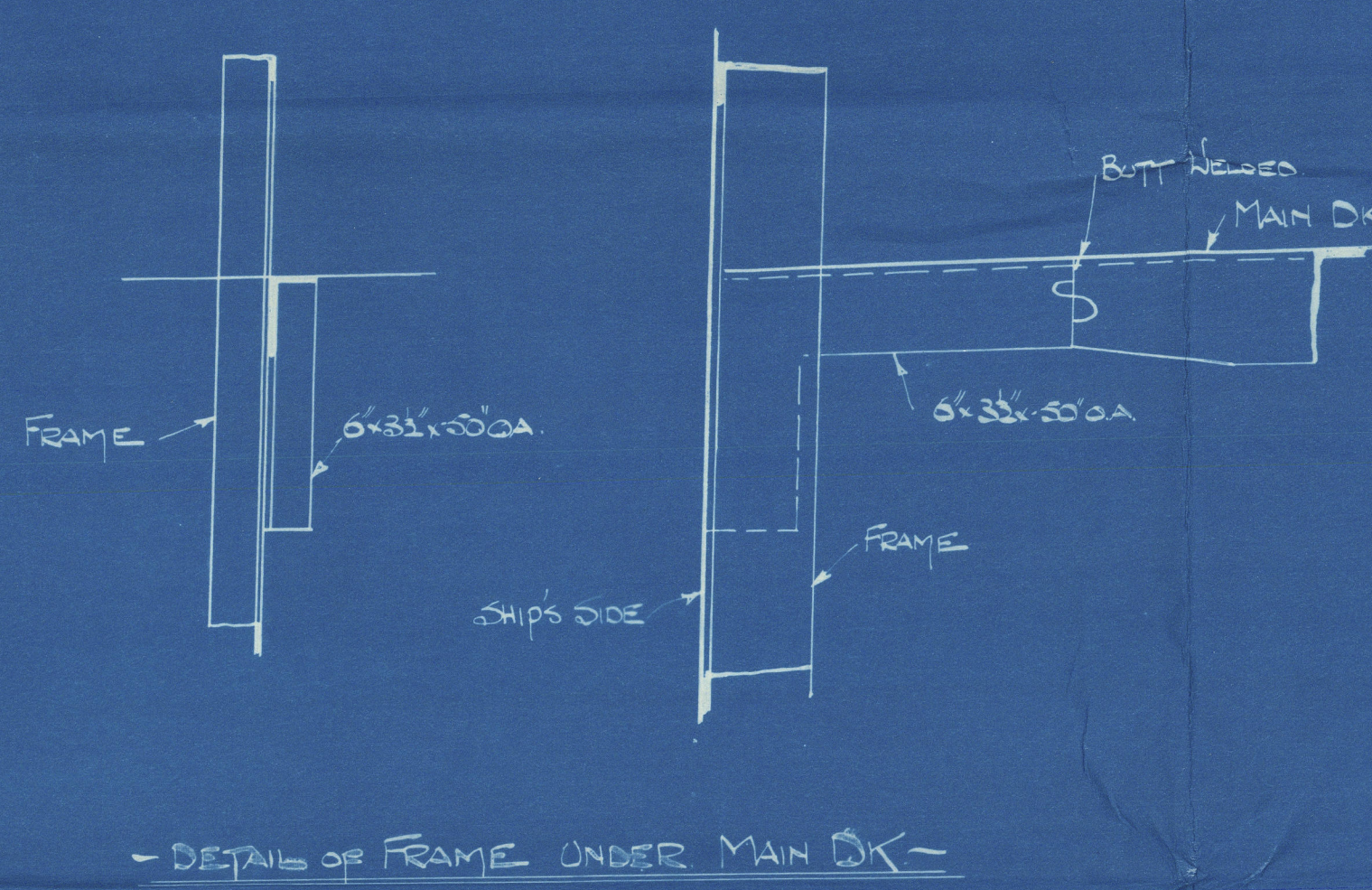
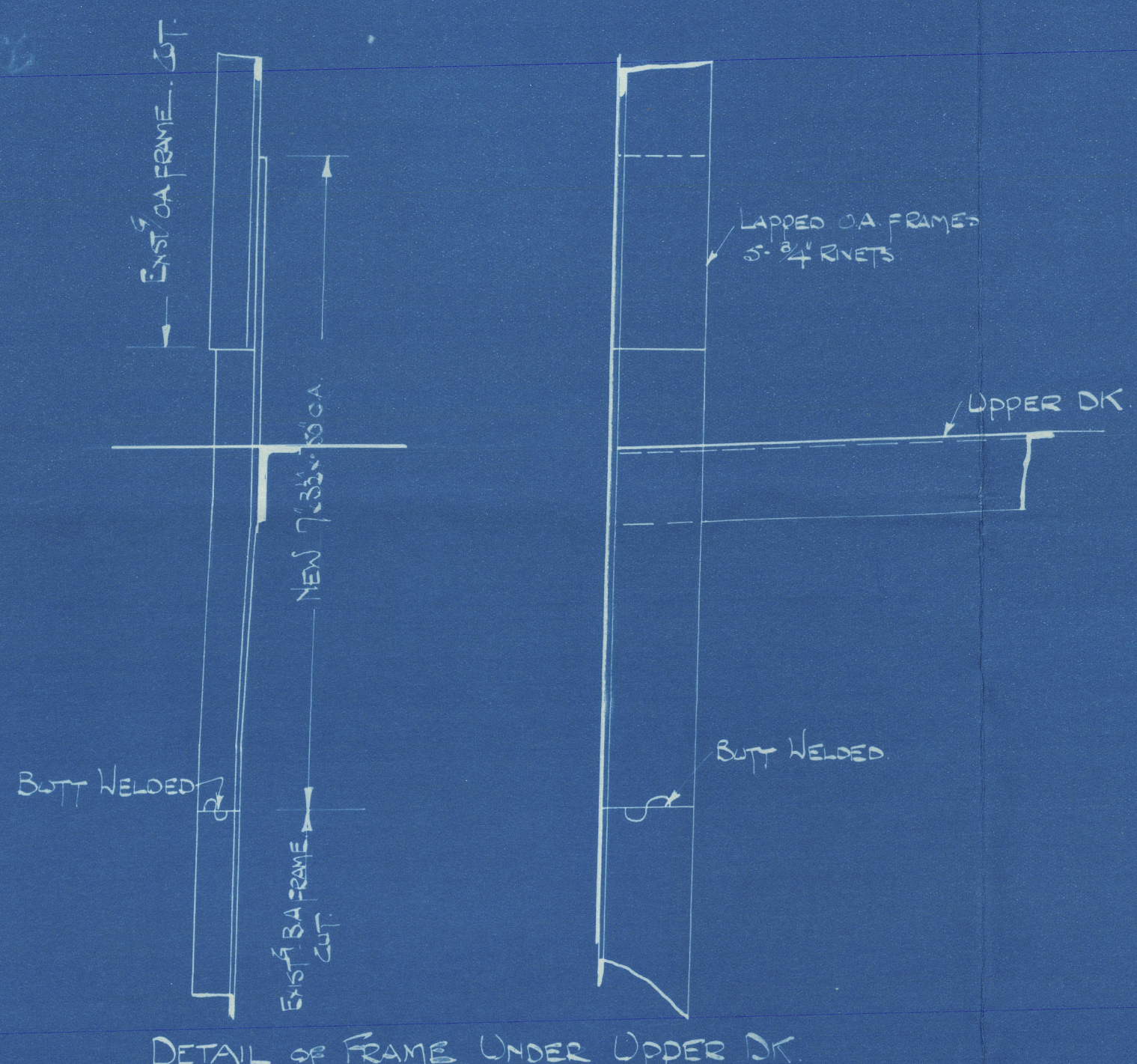


4/5/26



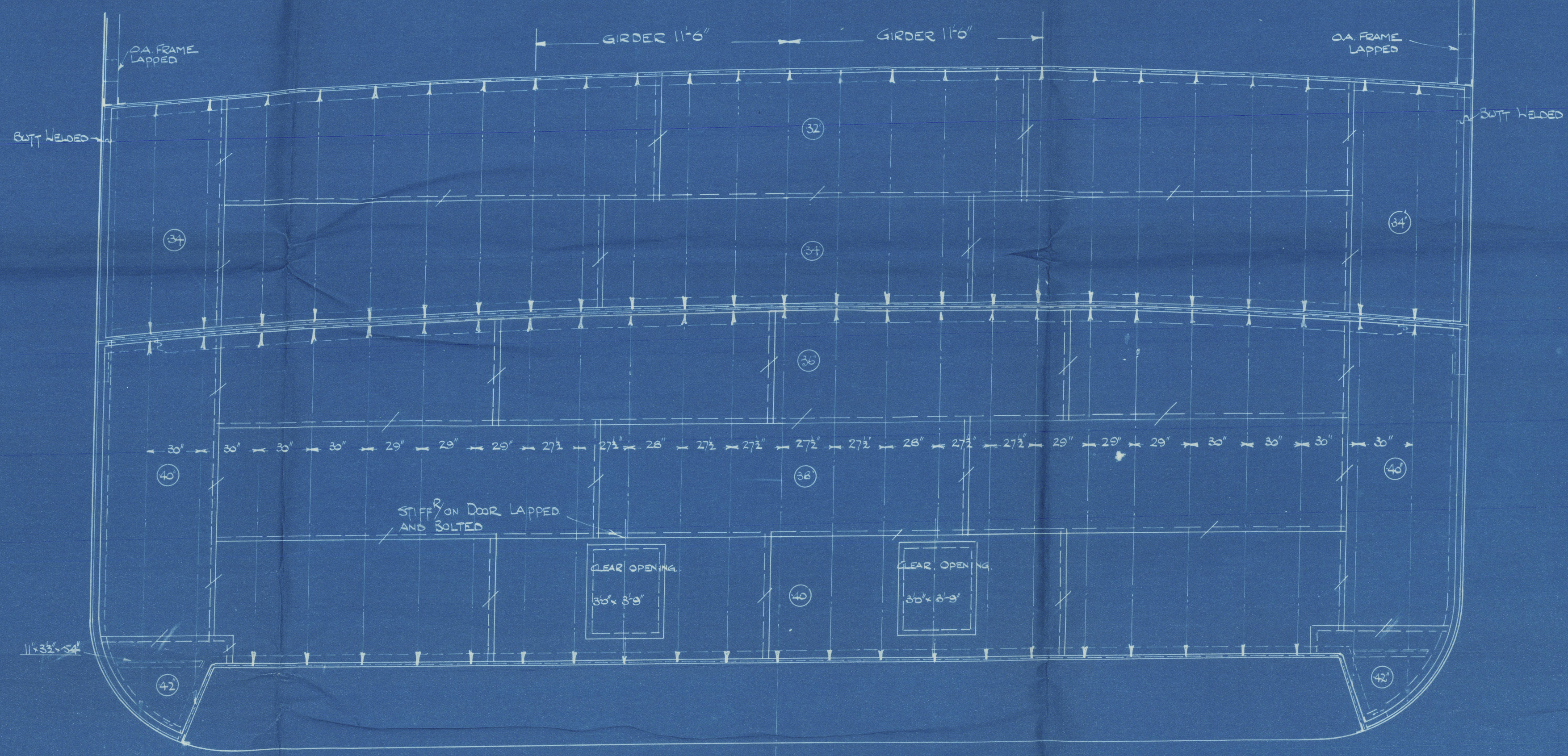
S.S. MIDDLESEX

COFFERDAM BHD. ON FRAME 109

SCALE:- 1/4" = 1 FOOT

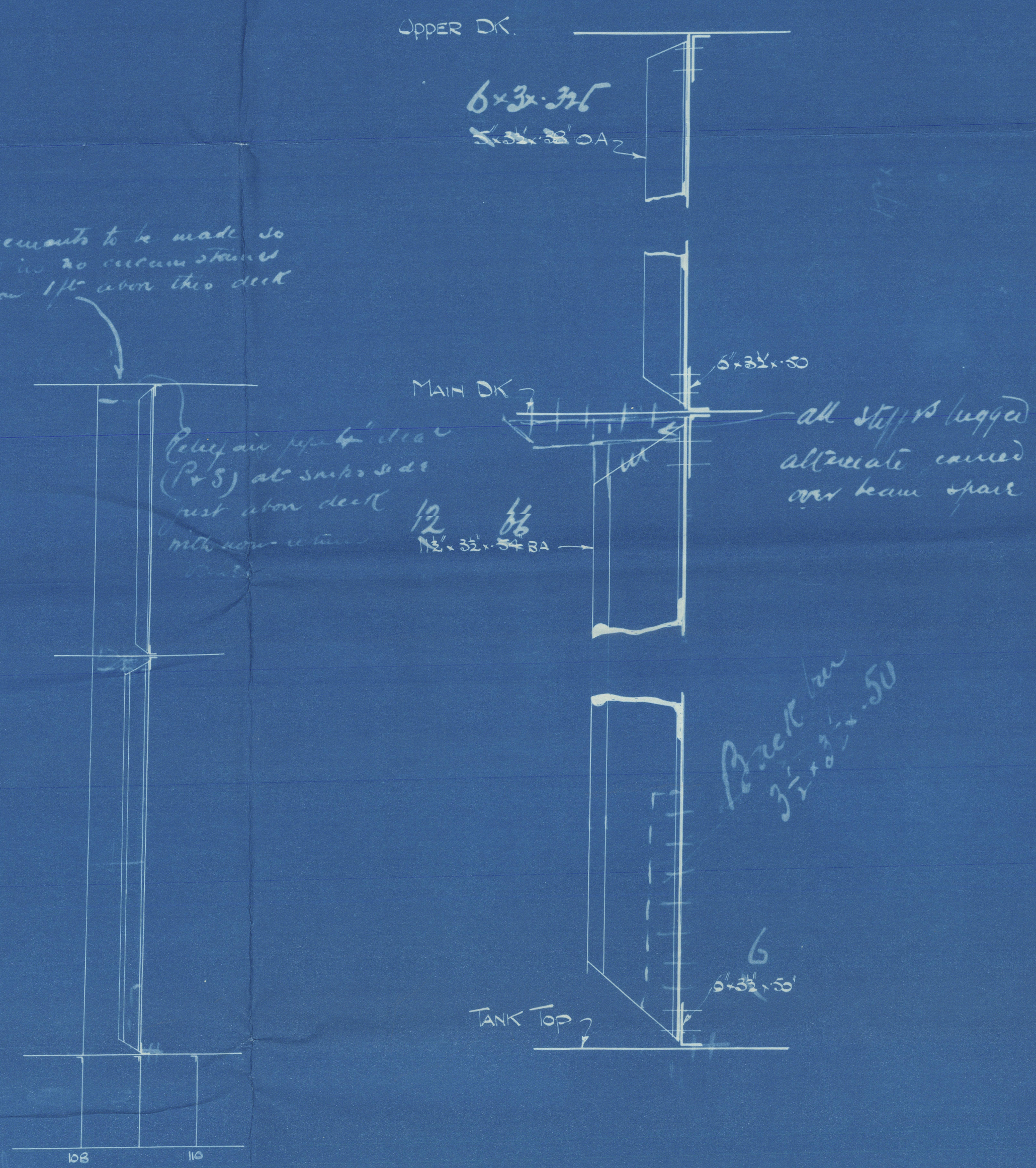
RIVETING
 BEAMS & BUTTS - SINGLE RIVETS 3/4" DIA. SPACED 4 DIAS.
 STIFFENERS 3/4" RIVETS - 7 DIAS AND 4 DIAS FOR 2" O
 AT EACH END EXCEPT IN WAY OF GIRDERS
 WHERE THEY ARE 7 DIAS THROUGHOUT
 BOUNDARY BARS - DOUBLE RIVETS SPACED 5 DIAS.

NOTE
 BOLS OF FRAME & BEAM TO BE BUILT OFF IN WAY OF PLATING
 LUGS TO TAKE GROUND FOR INSULATION TO BE FITTED ON FORE SIDE OF BHD
 BHD TO BE TESTED TO MAIN DECK
 ENTRANCE TO COFFERDAM TO BE BY MANHOLES WHICH ARE TO BE GAUGHT
 EXISTING INSPECTION FLUGS TO BE UTILISED
 ADDITIONAL RIVETS TO BE PUT IN PLANGE OF FRAME & SHELL PLATING
 IF FOUND NECESSARY FOR TIGHTNESS



ELEVATION OF COFFERDAM LOOKING FORWARD

Arrangements to be made so that pressure head in no circumstances can be more than 1ft above the deck



R.A.H. GREEN & SONS LIMITED	
GENERAL OFFICE	LONDON E.C.
STAFF DRAWING OFFICES	
9577	082
DRAWN BY THOMPSON	DATE
Checked by	10/5/26

Bofferdam Bhd.

W 53- 0137



© 2020

Lloyd's Register

Foundation