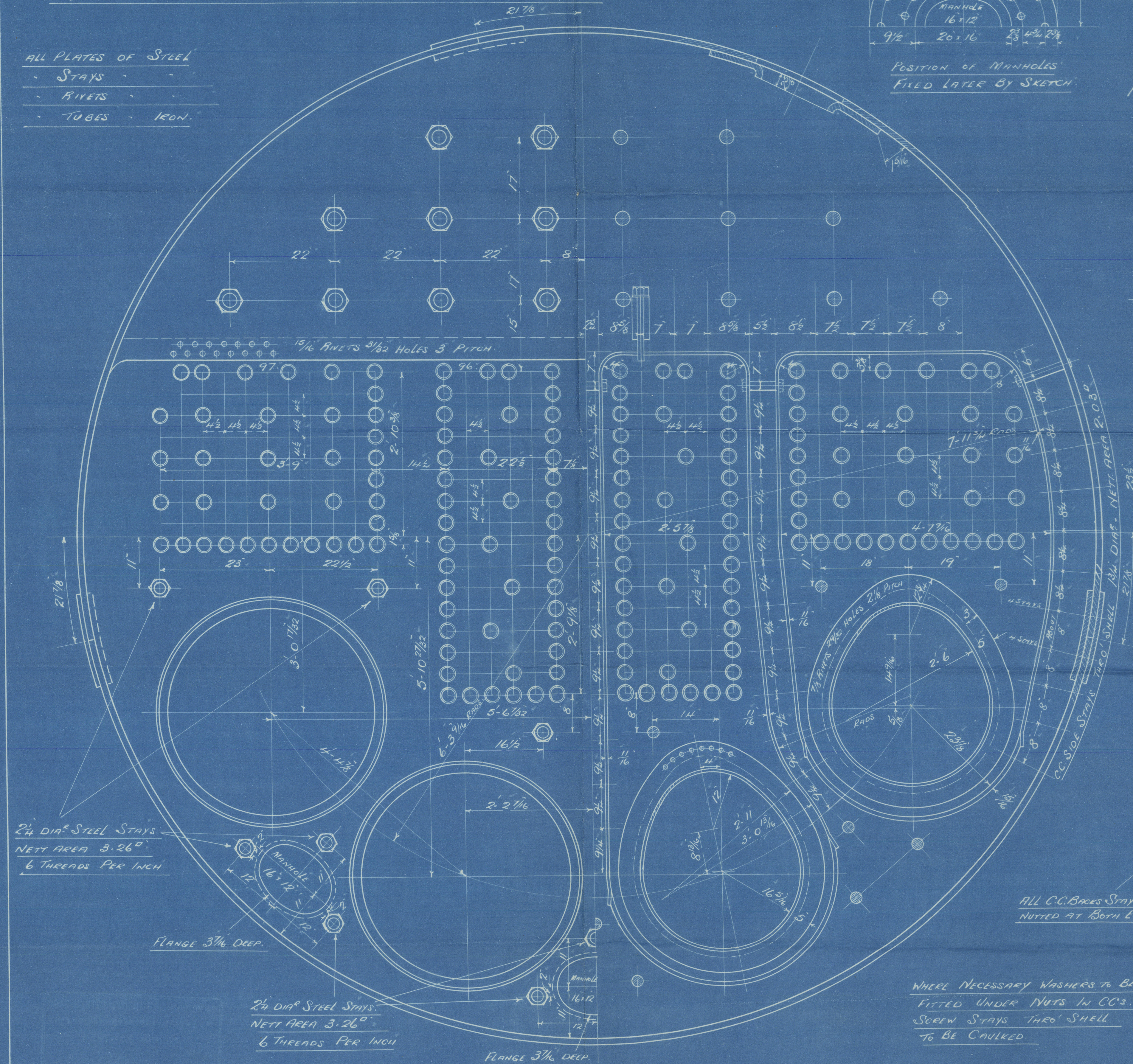
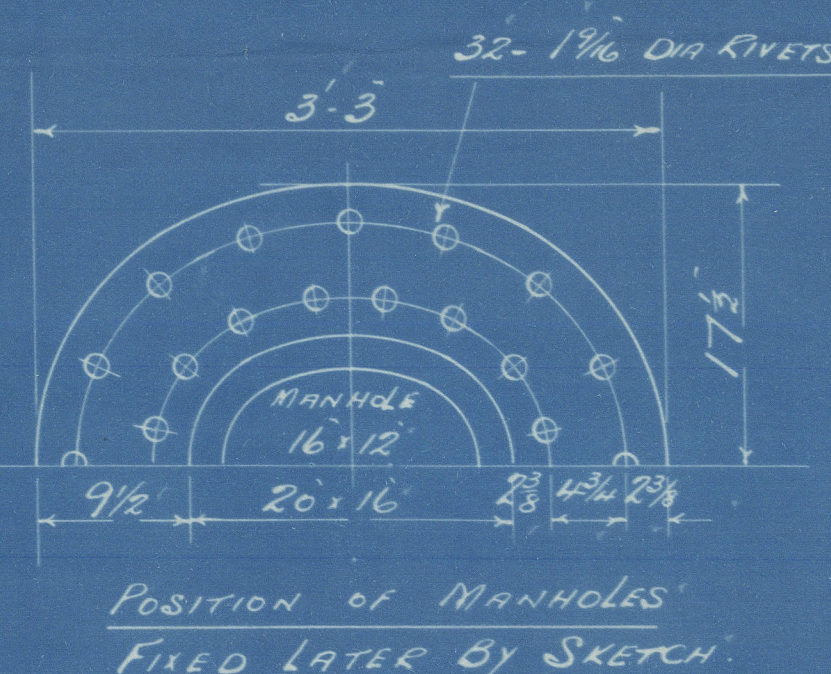


TENSILE STRENGTH OF MATERIALS

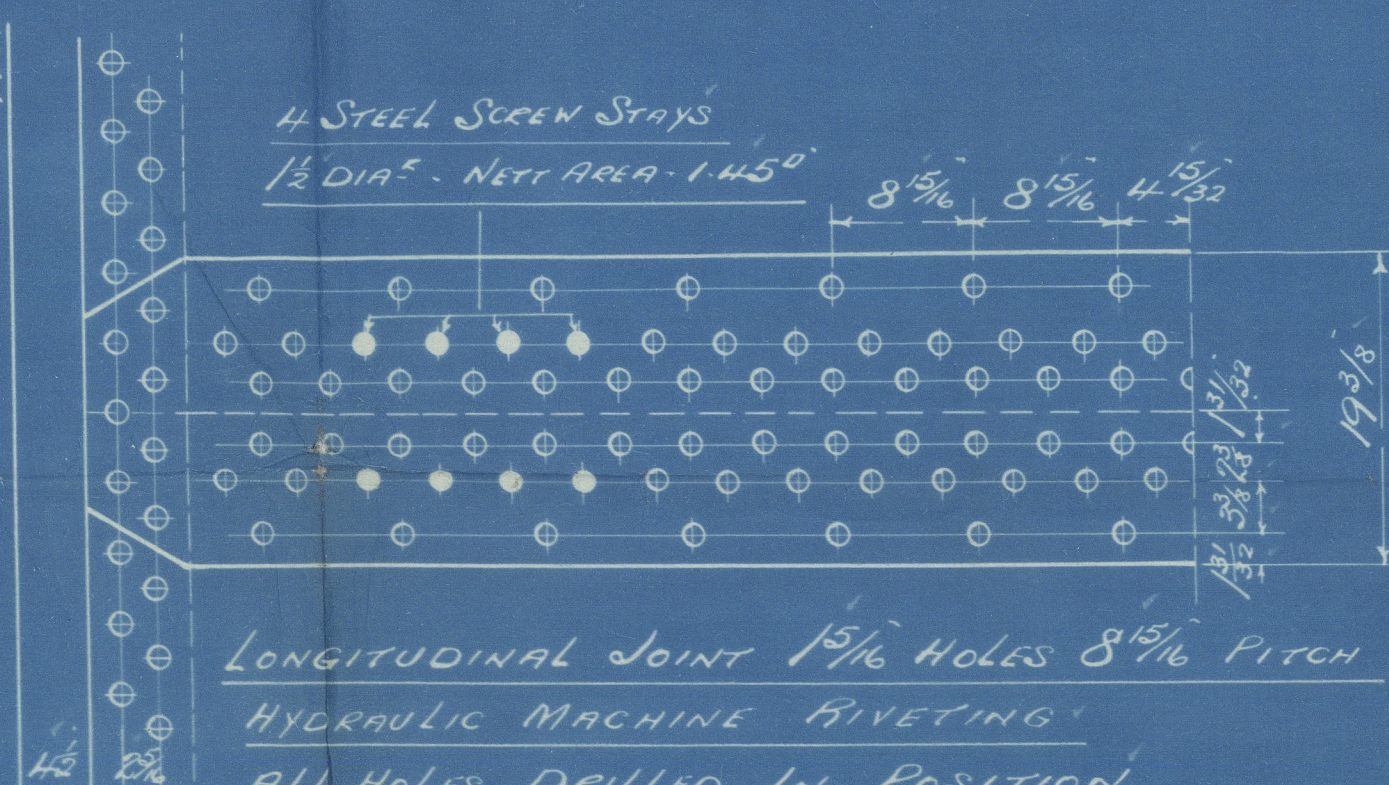
CYL. SHELL PLATES & BUTTSTRAIPS	=	29 3/4 TO 34 TONS PER SQ. INCH.
GIRDER PLATES	=	26 TO 30
MANHOLE DOUBLINGS	=	27 TO 30
ALL OTHER PLATES & FURNACES	=	26 TO 30
LONGITUDINAL STEEL STAYS	=	28 TO 32
SCREENED STAYS (STEEL)	=	26 TO 30
STEEL RIVET BARS	=	26 TO 30

WORKING PRESSURE = 180 LBS PER SQUARE INCH.
TEST = 360

ALL PLATES OF STEEL
STAYS
RIVETS
TUBES IRON.

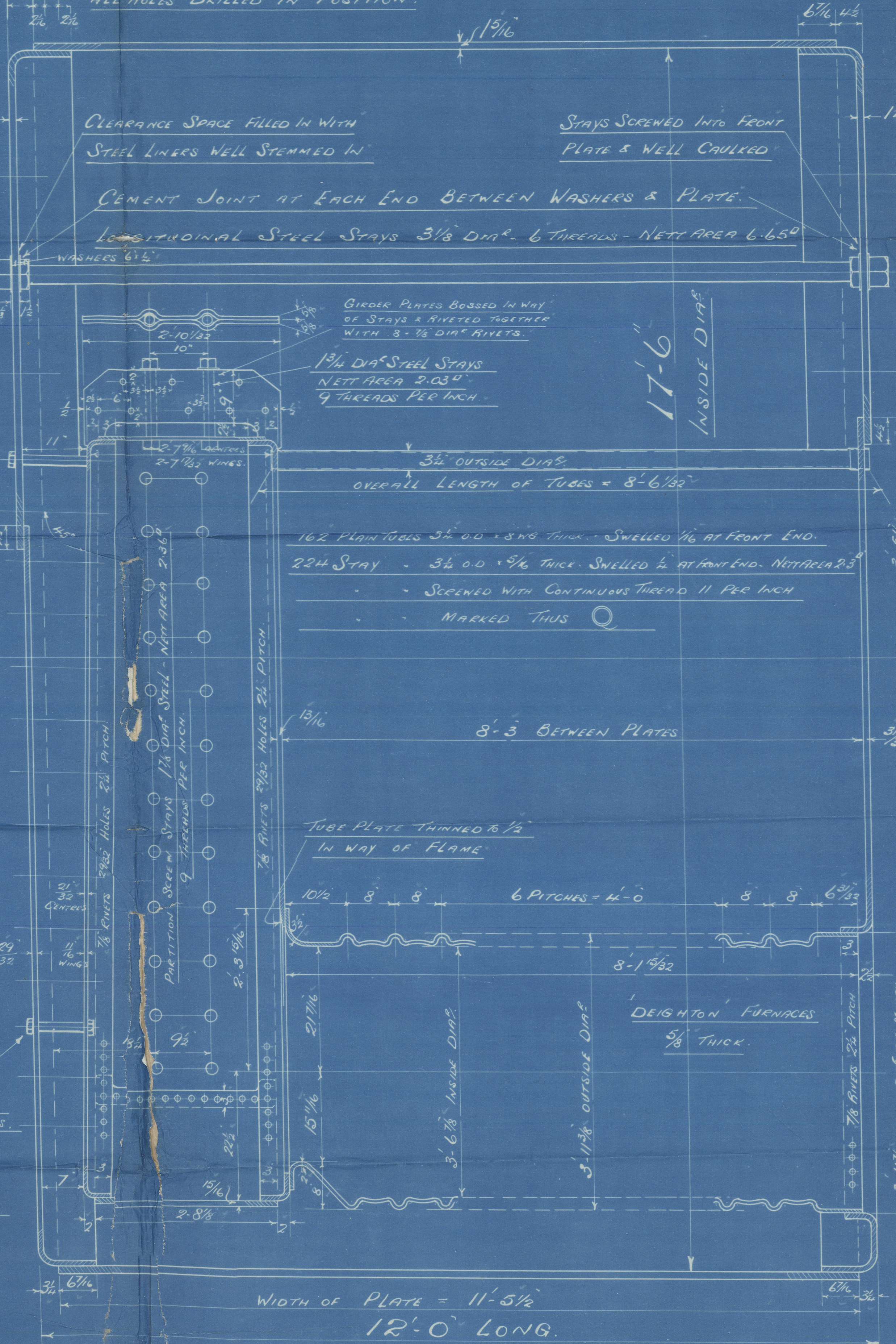


Circ. Joint 1 1/2" Holes with 1 1/2" DIA RIVETS



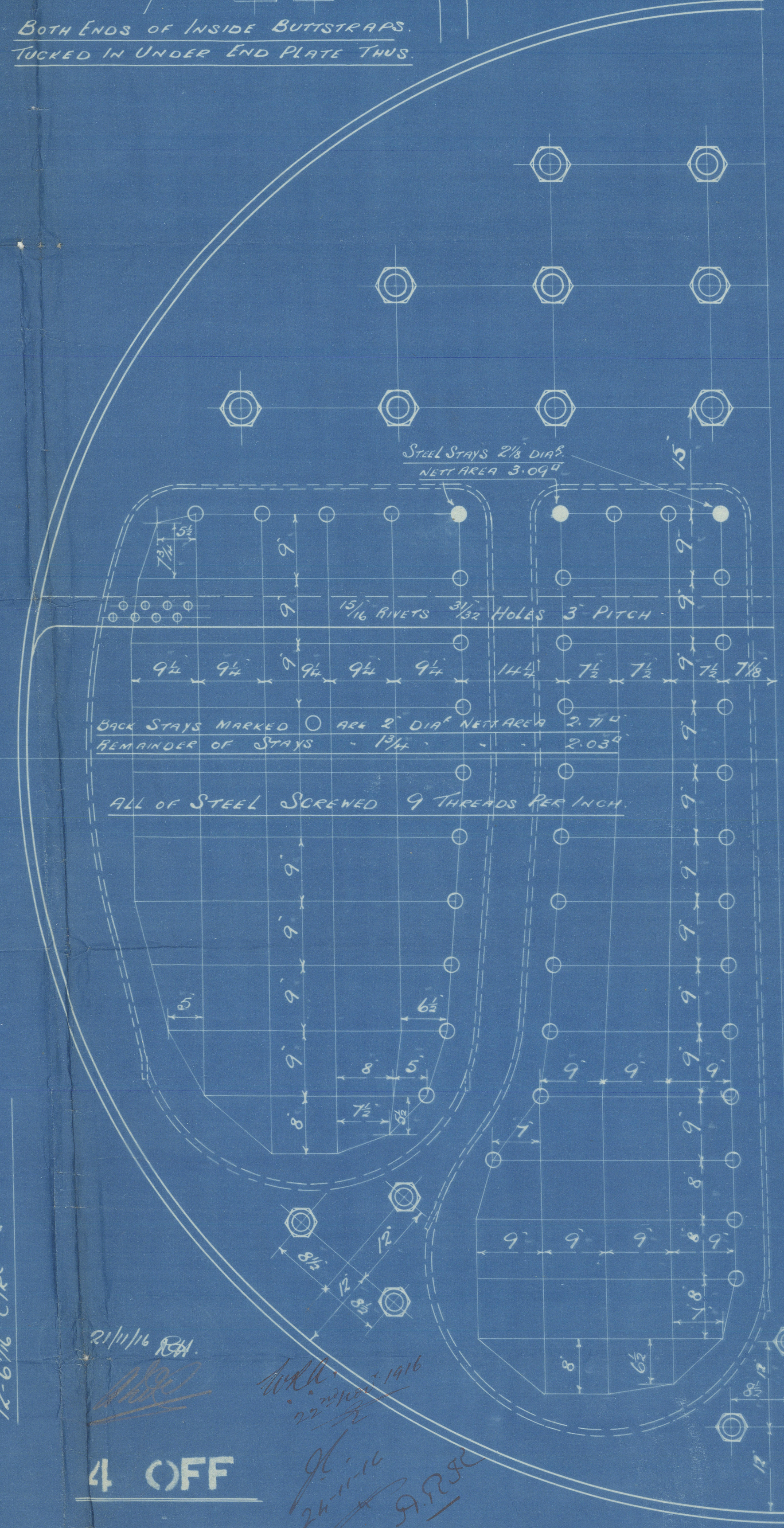
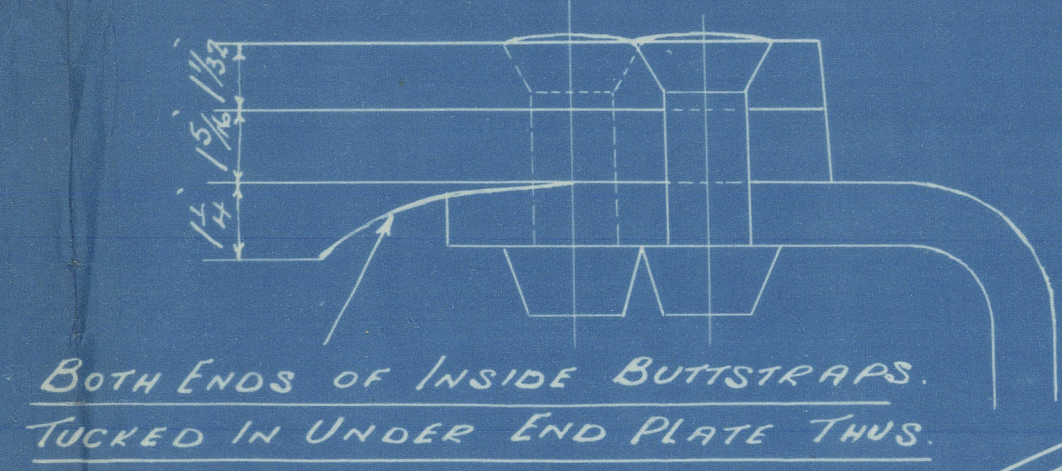
OUTER BUTTSTRAIPS 1 1/2" THICK
INNER 1 1/2"

PLATE = 85.314%
RIVET = 85.78%



TOTAL HEATING SURFACE (4 BOILERS) = 15260 SQ. FT.
GATE (4) = 321
FIREBARS 5'-6" LONG.

To LLOYDS SURVEY.



MAIN BOILERS N° 1026 N° 1027

Scale 1" = 1 Foot

Ames' Steel Boiler's No 1026.
1050

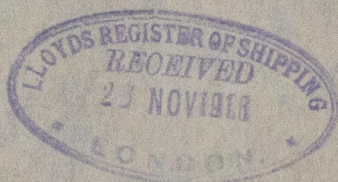
by

Swan Hunter & Wigham Richardson &

for them

No 1026 41. + 1053 41.

180 lbs "working pressure"



S.S. "MIDDLESEX"

NEWCASTLE ON TYNE.

Report No. 44485.



© 2020

Lloyd's Register
44485-0214