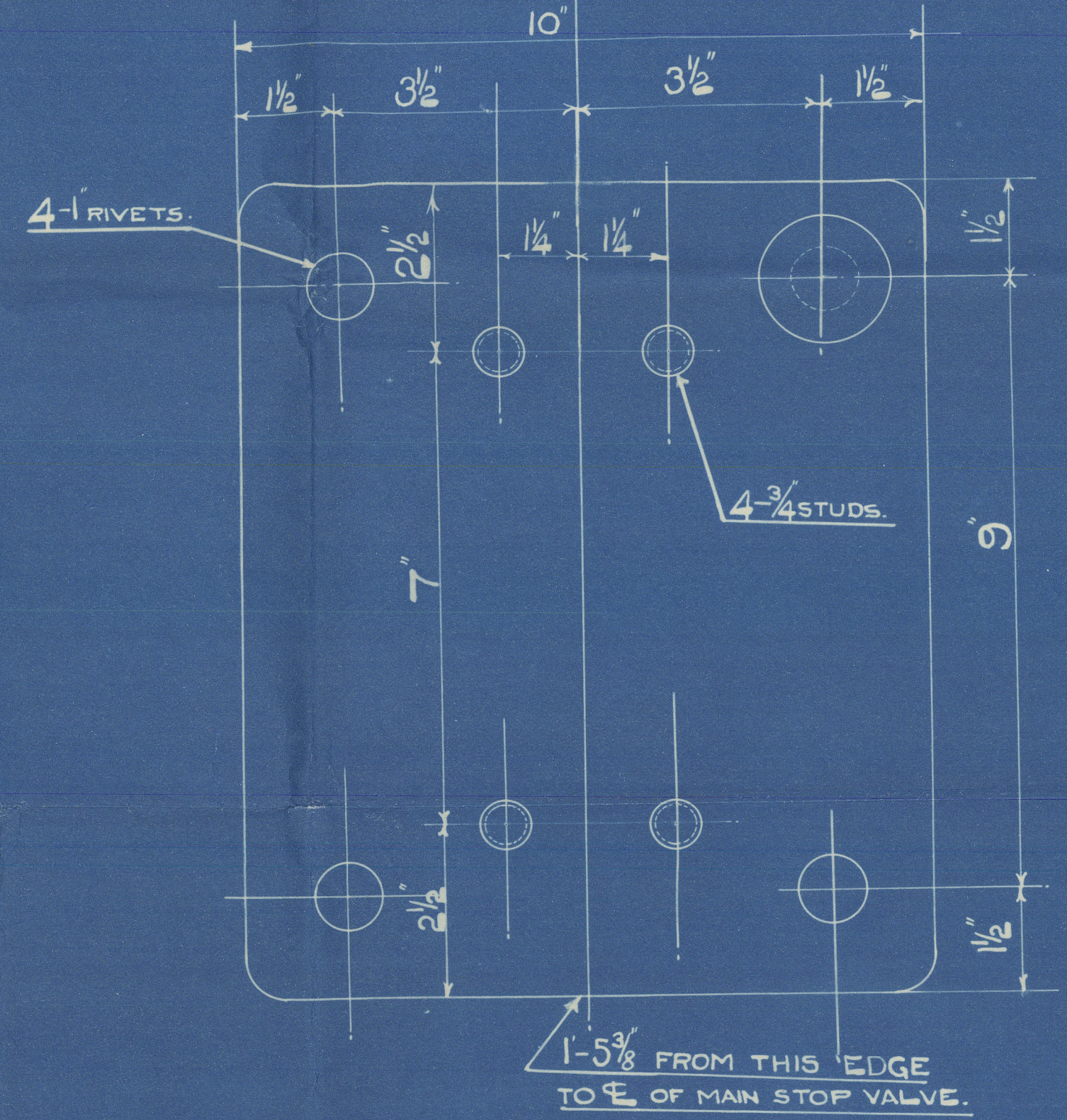
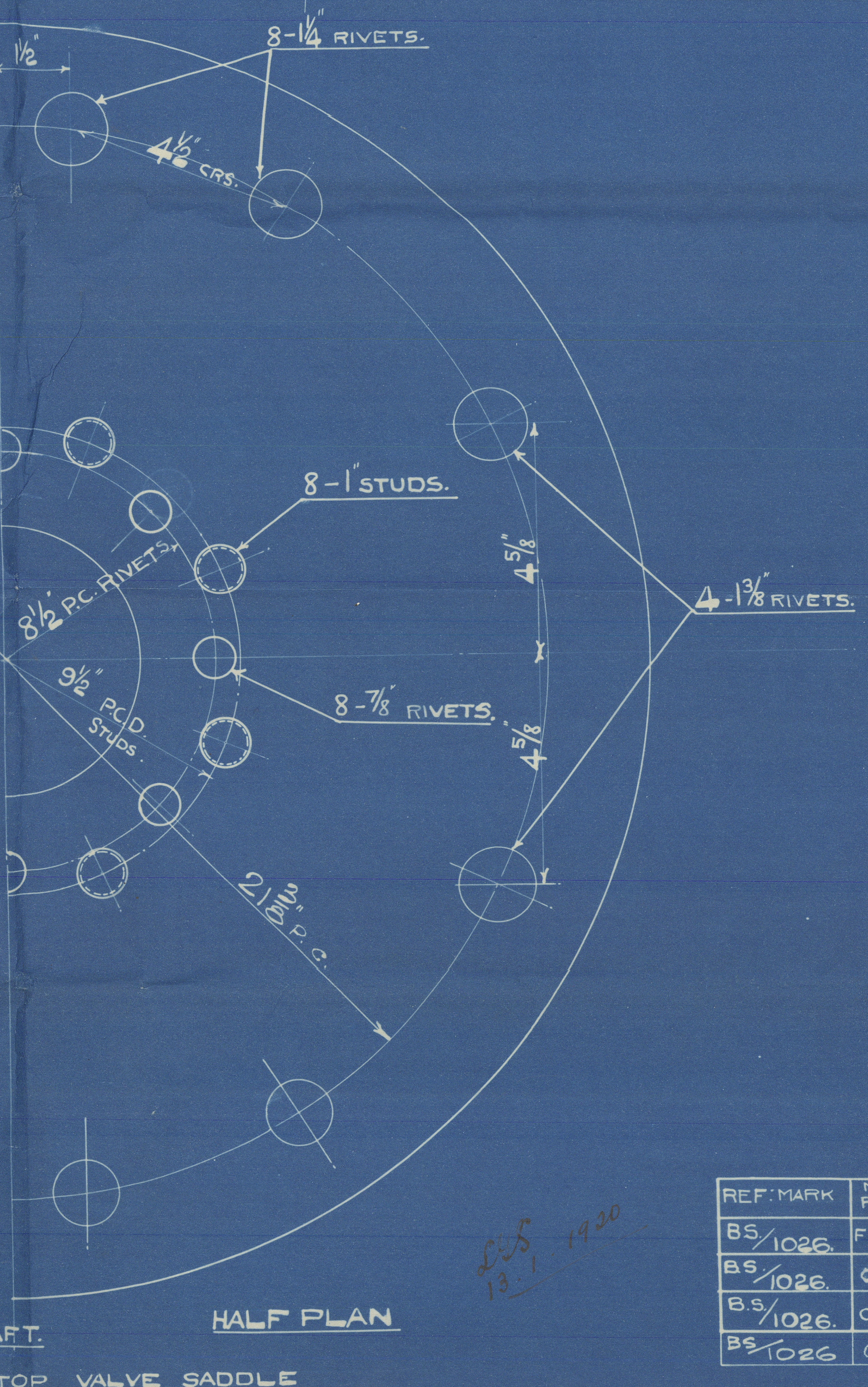
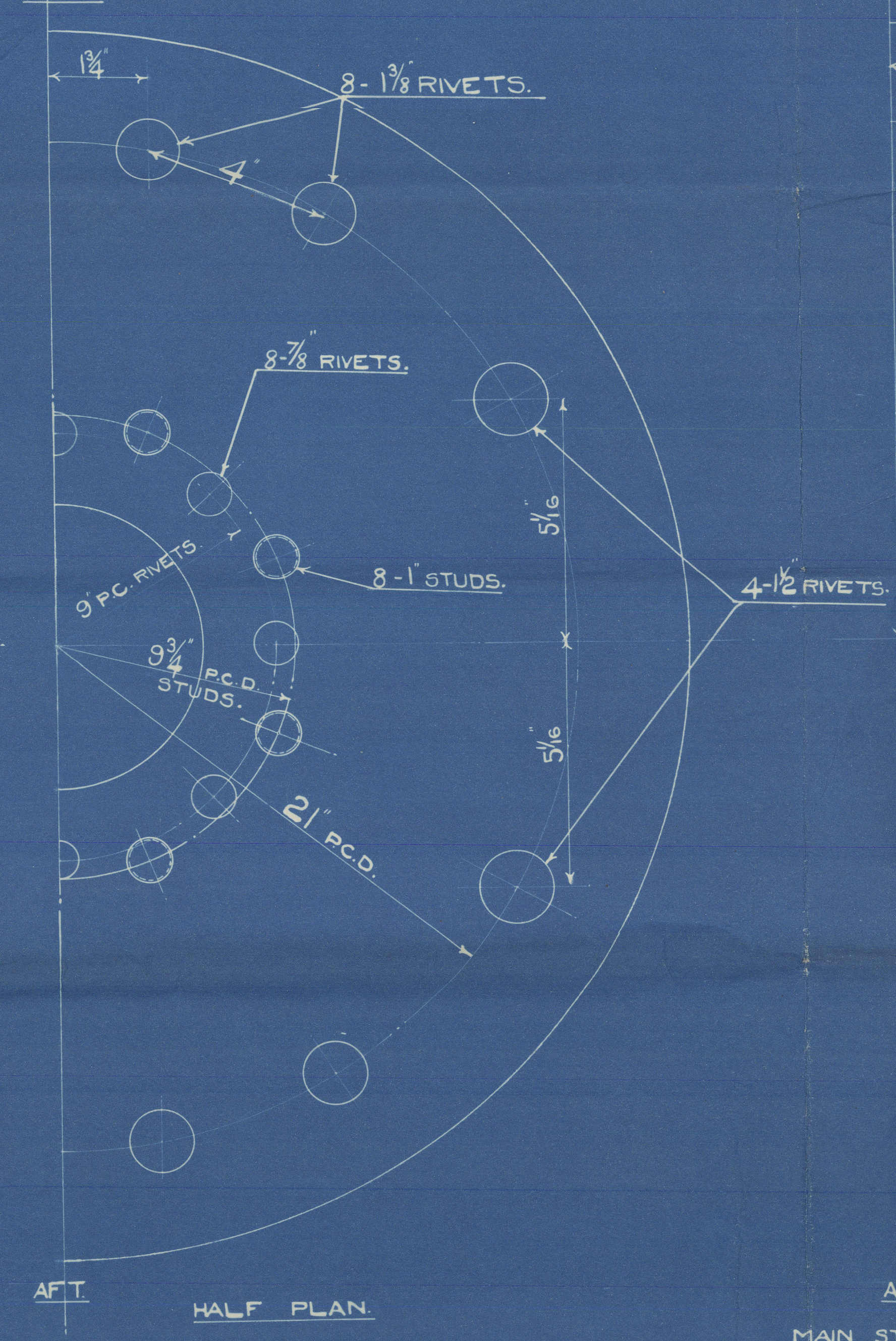
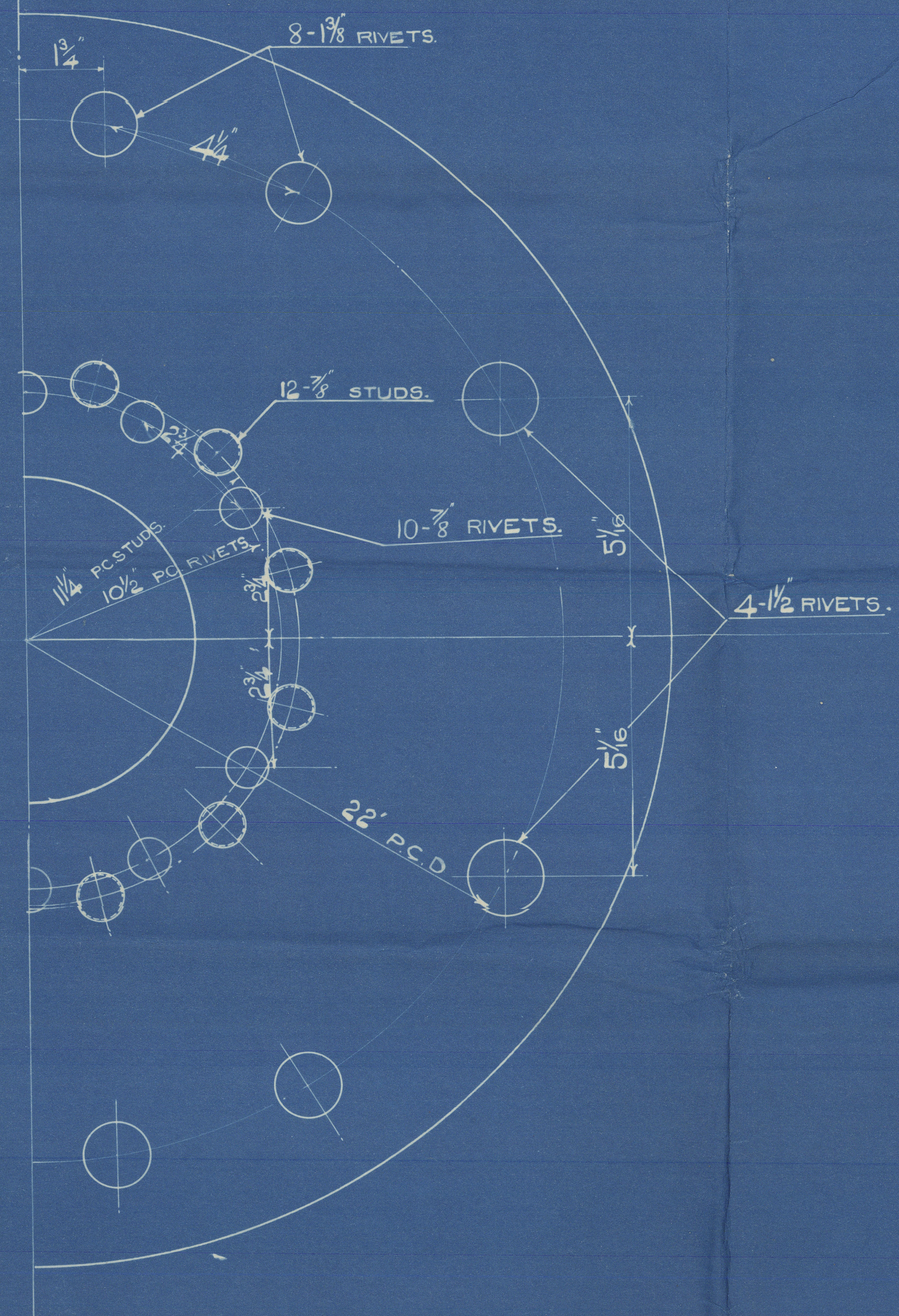
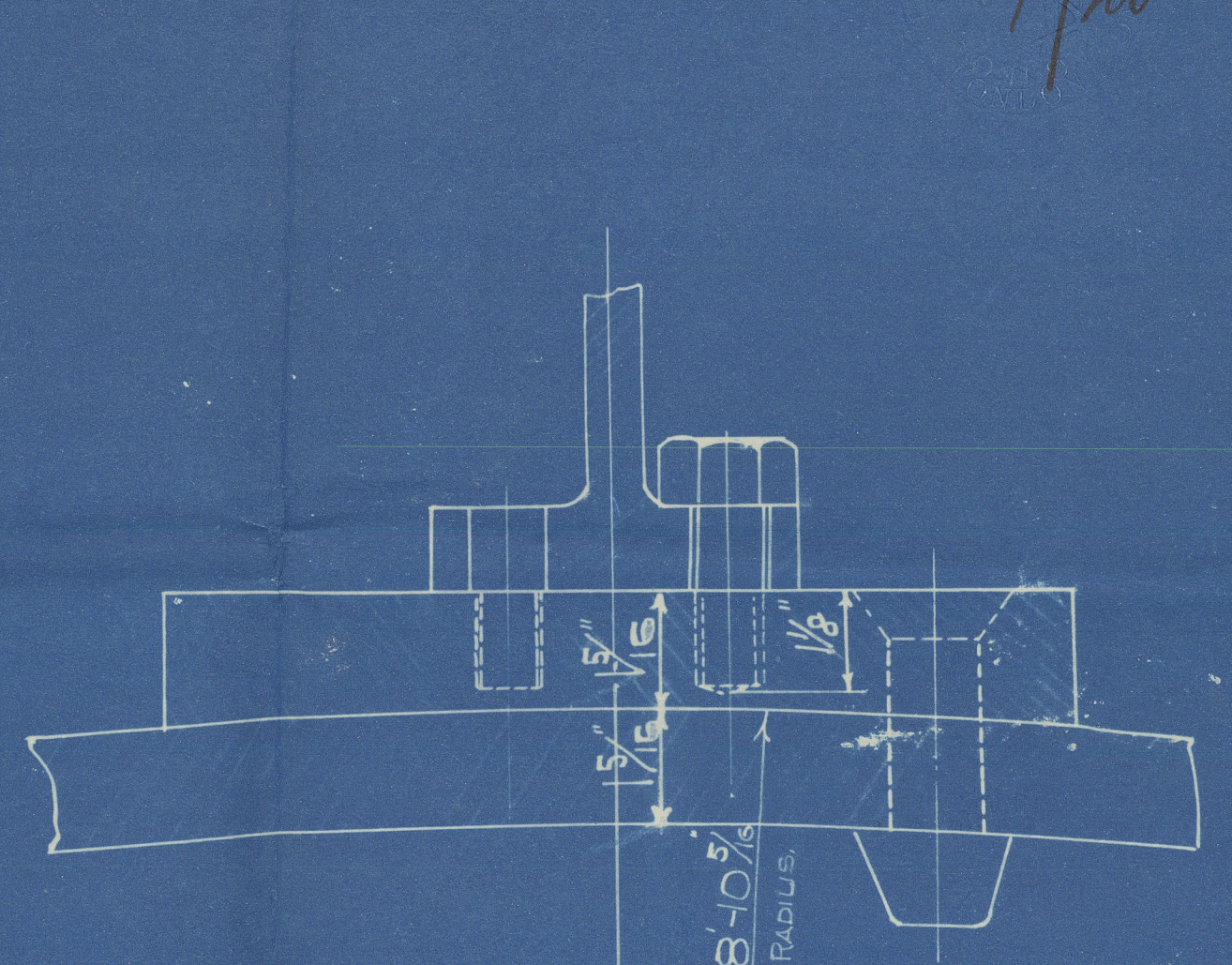
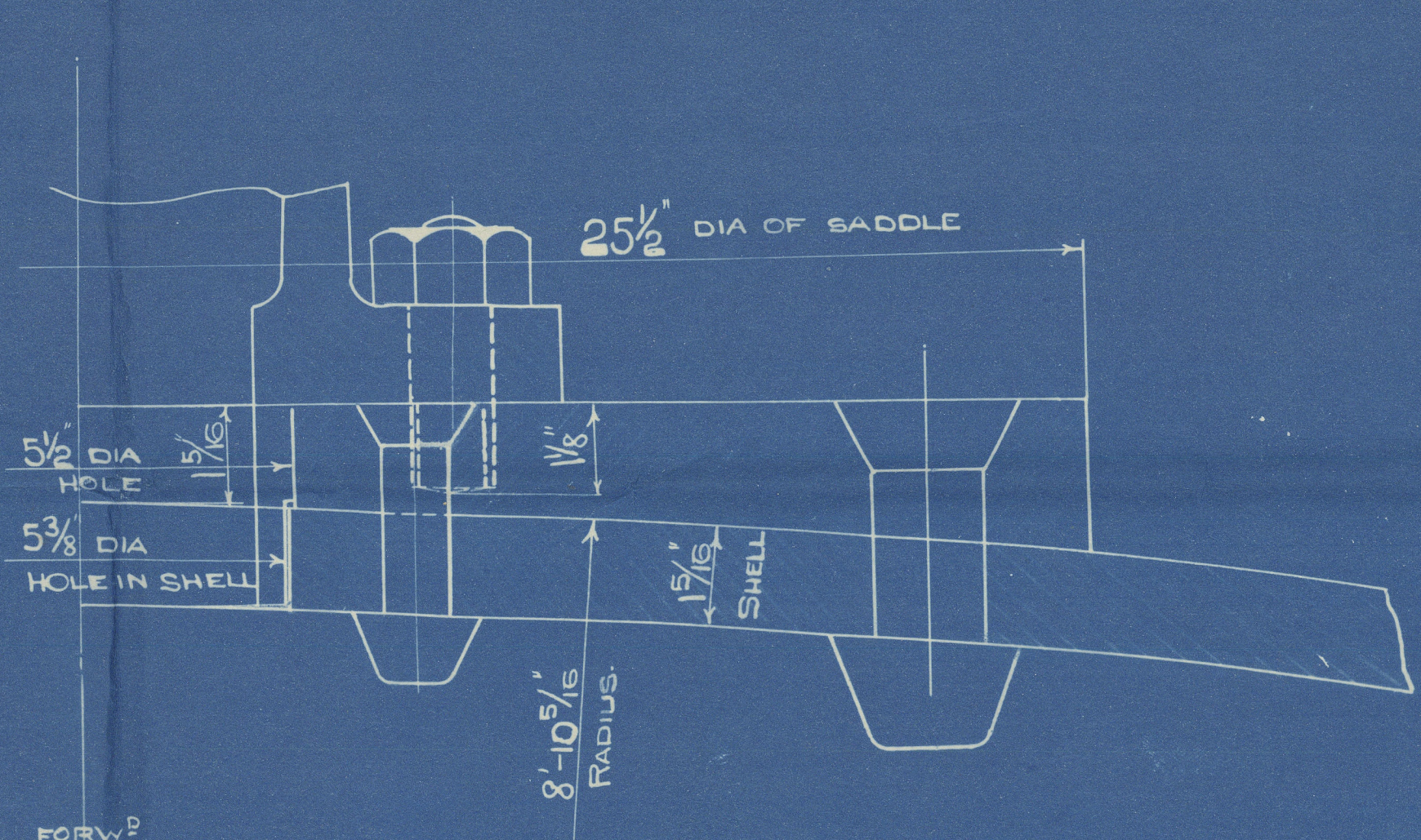
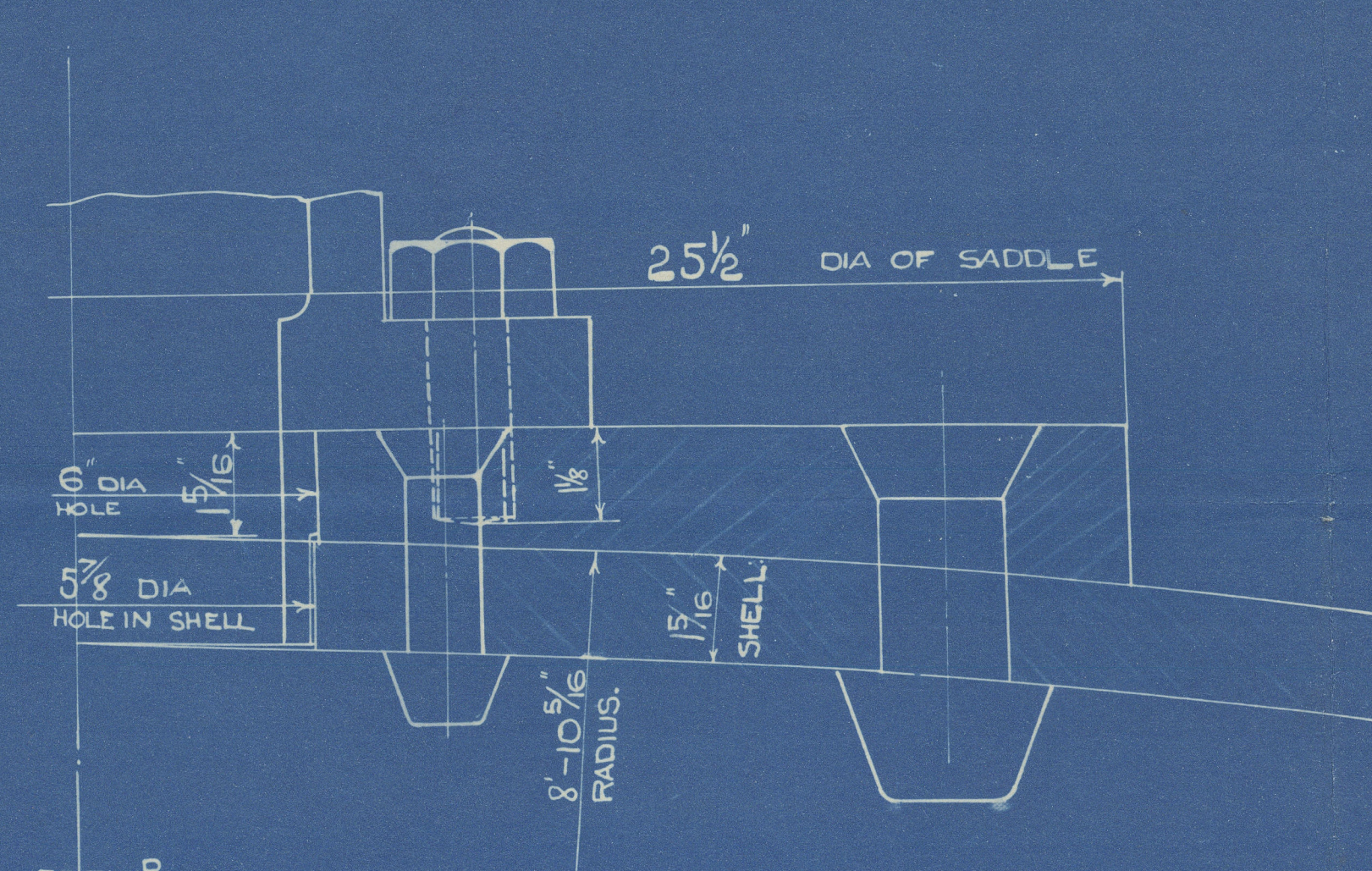
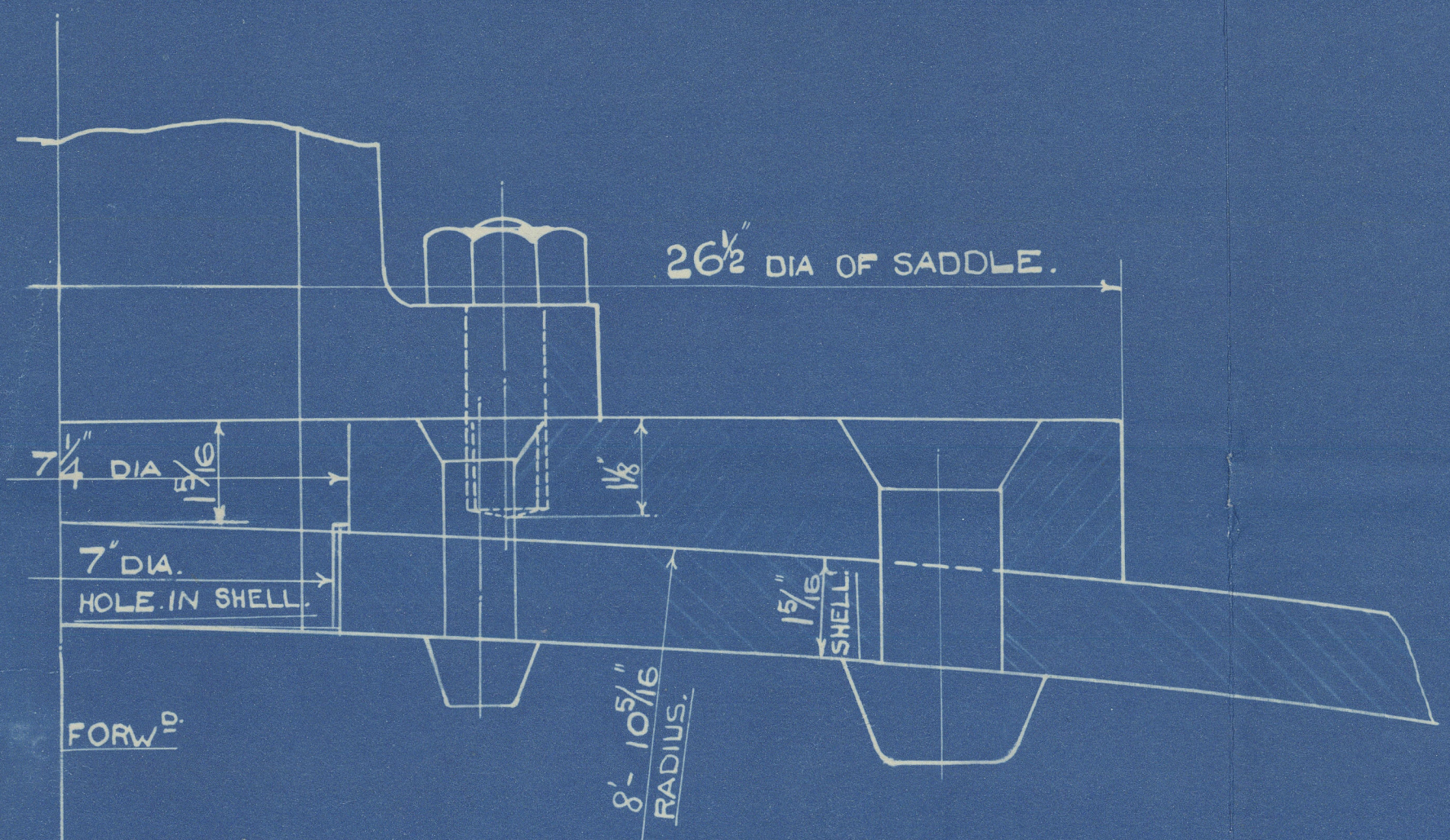


12/1/20



AFT. HALF PLAN.  
SAFETY VALVE & AUX. STOP VALVE SADDLES.  
10 THUS.

MAIN STOP VALVE SADDLES  
FOR NOS 1,3,4 & 5 BOILERS.  
4 THUS.

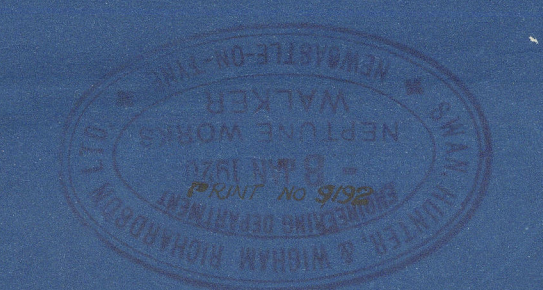
MAIN STOP VALVE SADDLE  
NO 2 BOILER.  
ONE THUS.

TO LLOYD'S REQUIREMENTS.

# SADDLE PLATES FOR MAIN BOILERS.

SCALE - HALF FULL SIZE.

REF. MARK	Nº REQD.	LENGTH.	BREADTH	THICKNESS	POSITION.
BS/1026	FIVE	4'-8"	2'-4"	2 3/16"	SAFETY & AUX. STOP VALVE SADDLES
BS/1026	ONE	4'-7"	2'-3 1/2"	2 1/8"	MAIN STOP VALVE SADDLES
BS/1026	ONE	4'-0"	13"	1 3/4"	FOOT OF SUPERHEATER STOP VALVES.
BS/1026	ONE	7'-4"	2'-3 1/2"	2 1/8"	MAIN STOP VALVE SADDLES



B 66

N.P.R.  
L.R.  
J.S.B.  
8.1.20.

Nº  
1026

W53-0215



S H & Co Ltd

1026

Print - B. 66.

Plan of proposed saddle plates

for Main Boilers. 1026

---

S.S. "MIDDLESEX"

NEWCASTLE ON TYNE.

Report No. 44485.

---

X153-0215



© 2020

Lloyd's Register  
Foundation