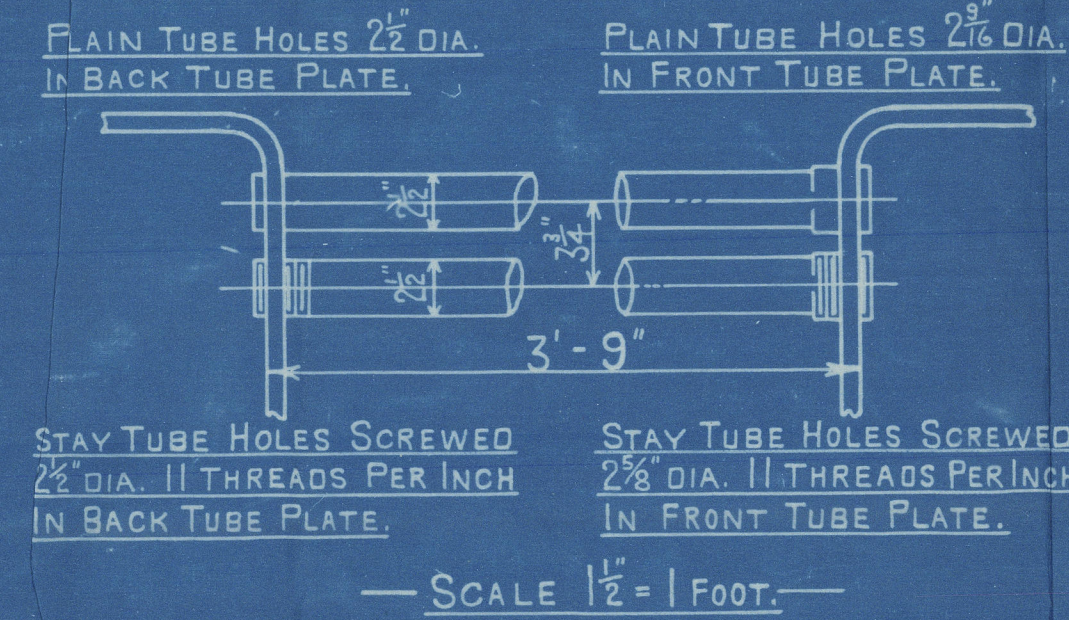


HORIZONTAL FLUE TUBES.



Approved 7th August 1909
PATENT BOILER No 204
6'-0" x 14'-0" x 400 $\frac{c}{p}$ x 100 LBS.

SCALE 1 INCH TO 1 FOOT

—SIEMENS MARTIN MILD STEEL PLATES.

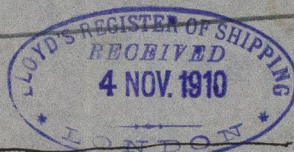
SURVEY-LLOYDS.
STANDARD.

COCHRAN & CO ANNAN LTD.
ENGINEERS & BOILERMAKERS
ANNAN, SCOTLAND.

DRAWING No 7427

Glasgow
Messrs Cochran & Co
Boiler 5171- D² 7427

Messrs S P Austin & Son s/s 255
Gls report No 29473



No 10643
Lloyd's Test -
180 lbs
25/10/10 H. G. S.

To Sir Arthur
This boiler has been substituted for
No 5063 which has ~~already~~ been tested
but has now been placed into stock.

Cat 10643



© 2020

Lloyd's Register
W542-0268