

PRINCIPAL DIMENSIONS.

LENGTH B.P. 331.0
BREADTH EXTREME 47.6
DEPTH IN HOLD TO TANK TOP. 20.1
DEPTH MOULDED 22.11

CLASS 100 A.I. Lloyd's

SCALE 1/2" = 1 FOOT.

RULE LENGTH 331.0
RULE BREADTH 47.3
RULE DEPTH 22.92

TRANSVERSE No 70.22
LONGITUDINAL No 23242
DEPTH (d) 13.66

DEPTHS IN LENGTH TO UPPER DECK 14.44

" " " BRIDGE DECK 10.8

EQUIPMENT. No 24371.

EQUIPMENT.

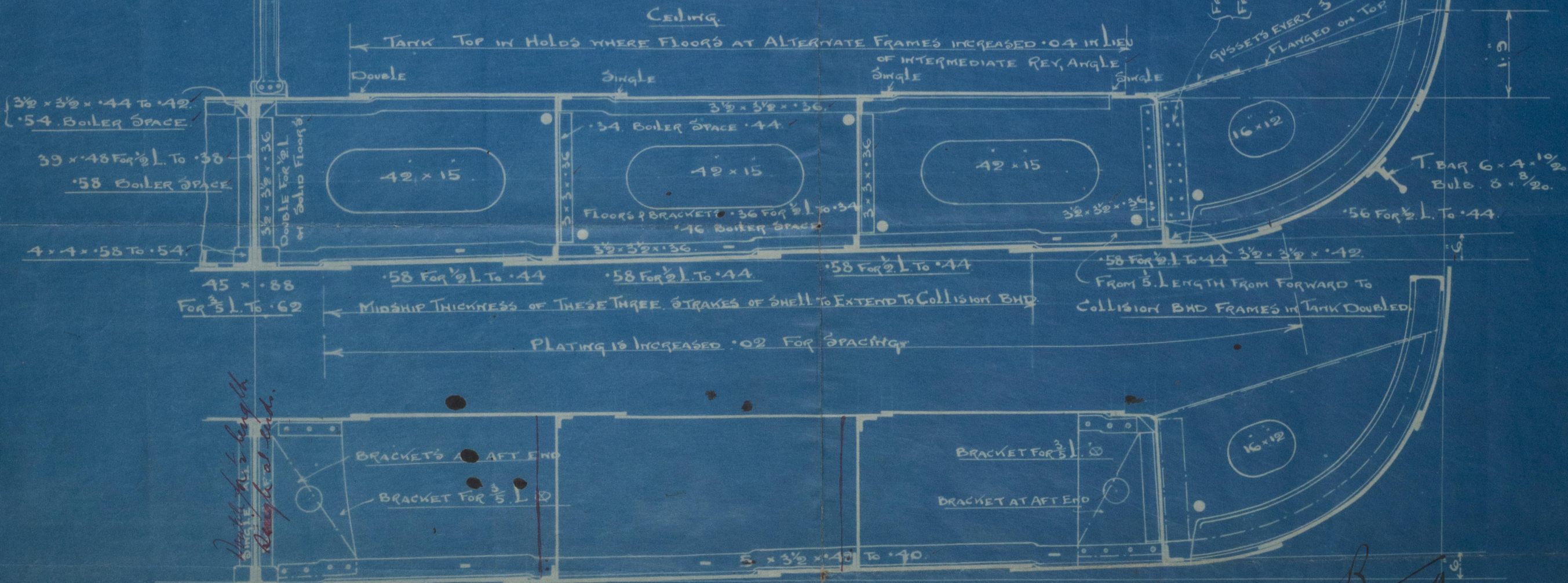
2 BOWERS 45 CWT STOCKLESS
1 DO 38
1 STREAM 12 EX STOCK
1 KEDGE 5 1/2
270 FATHOMS 1 1/2. STEEL CHAIN CABLE
30 4 1/4 MOORING WIRE
100 4 STEEL TOWLINE
2-30 2 1/2 HAUSER WITH MANNING CONVENT
2-30 6 MANILLA WARPS

SINGLE PILLARS 4 1/2 DIA
PLACED ZIGZAG.
(3 RIVETS IN HEAD & HEELS)

UNDER BRIDGE { FULL BEAMS. 8 1/2 x 3 x .46 BULB ANGLE KNEES. 20 x .40
HALF BEAMS. 7 x 3 x .4
IN { FULL BEAMS. 9 1/2 x 3 1/2 x .50 KNEES. 26 x .50
WELLS { HALF BEAMS. 9 x 3 1/2 x .48
MATCH BEAMS SAME SIZE AS FULL BEAMS DOUBLE CLEAR OF HATCH.

FRAMES BETWEEN PEAK BHDS. BULB ANGLE 9 x 3 1/2 x .54. 25 APART.
FRAMES IN PEAKS { FRAMES 5 1/2 x 3 1/2 x .34 ANGLE
REV. DO 3 x 3 x .34 } 24 APART.
ALTERNATE REV. FRAMES TO FOLE OR REV. FRAMES DOUBLE IN TANK IN ENGINE SPACE & ON BOILER BEAMERS.
(FLOORS BY RULE 23 x .46 FOR 1/2 L. TO .38.
STEM 3 1/2 x 2 1/2. PROPELLOR POST. 3 1/2 x 6 1/2. RUDDER POST. 8 1/2 x 6 1/2.

TANK MARGIN PLATE. 31 x .42. BOILER SPACE .52.
DO MIDDLE LINE STRAKE .44 FOR 1/2 L. TO .36. BOILER SPACE .52.
DO TOP IN HOLDS .56 FOR 1/2 L. TO .52 IN ENGINE SPACE .44.
38 34 BOILER SPACE .52.



RICHARDSON, DUCK & CO
SHIPBUILDERS
STOCKTON-ON-TEES.

INCREASES IN TANK IN BOILER SPACE (WHERE NOT MARKED) AS PER RULES
PROPELLOR BOSS PLATES .66.

Tracing No 816. Sep 7/1911.

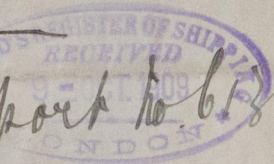
No 607

map^{no} Richardson Sheet 163
S. S. No 607
Midship Section



Sp. "Sterndale"

Midship Report to 6/82



RETAIN



© 2020

Lloyd's Register
Foundation