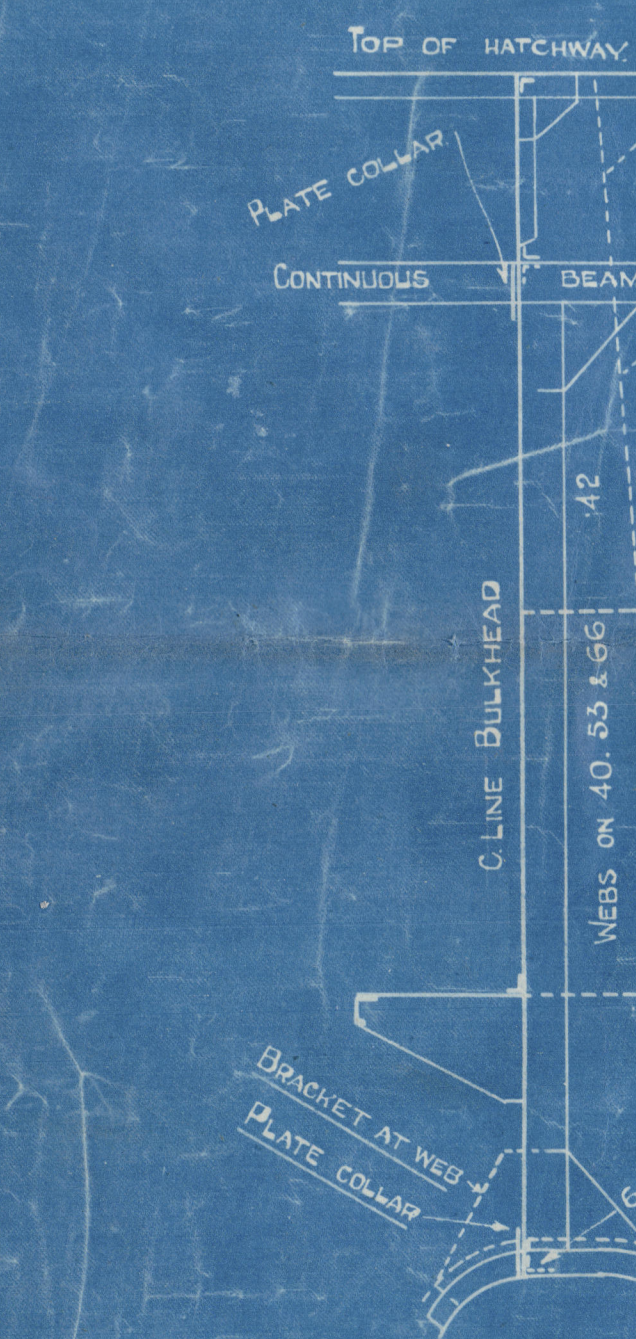


COPY TO
Stephen & Sons 7.3.18



SECTION IN WAY OF TUNNEL



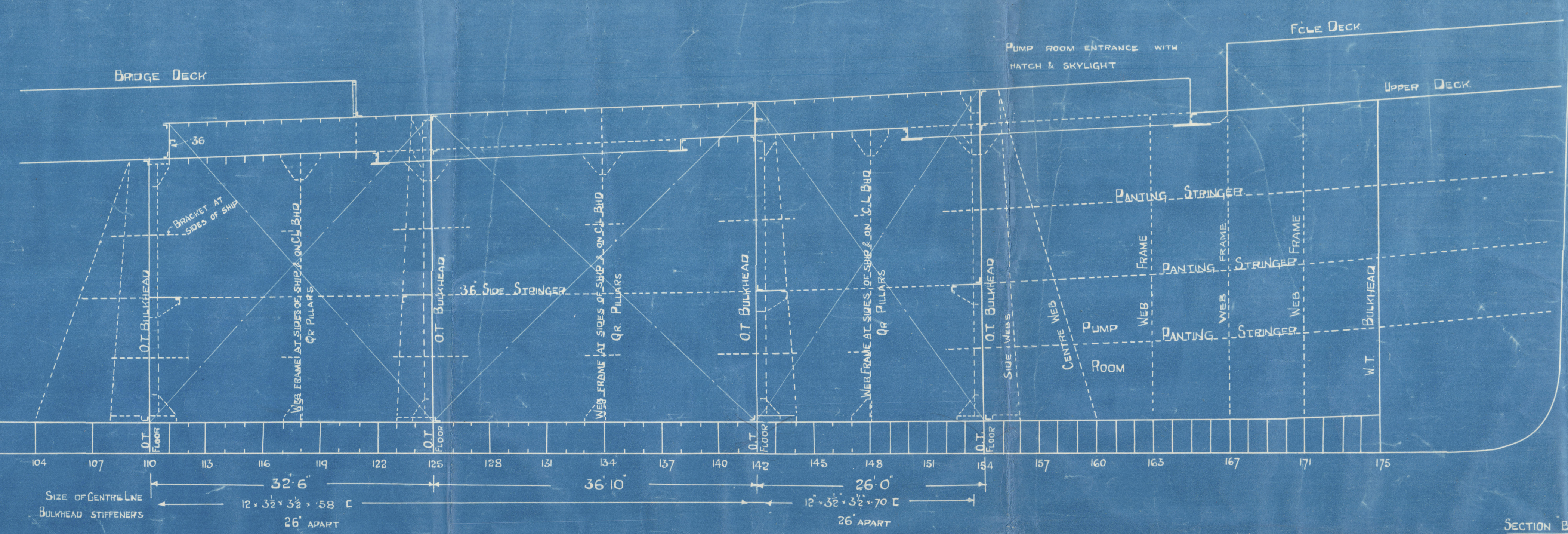
TUNNEL STIFFENERS 6x38x50 L 126
9x38x50 B.A. STIFFENERS ON WEBS OF C.B. BAY
TUNNEL PLATING SIDES & TOP AS
ALREADY APPROVED
STIFFENERS BRACKETED TO TANK TOP
TUNNEL FOUNDATION BAR 38x38x50



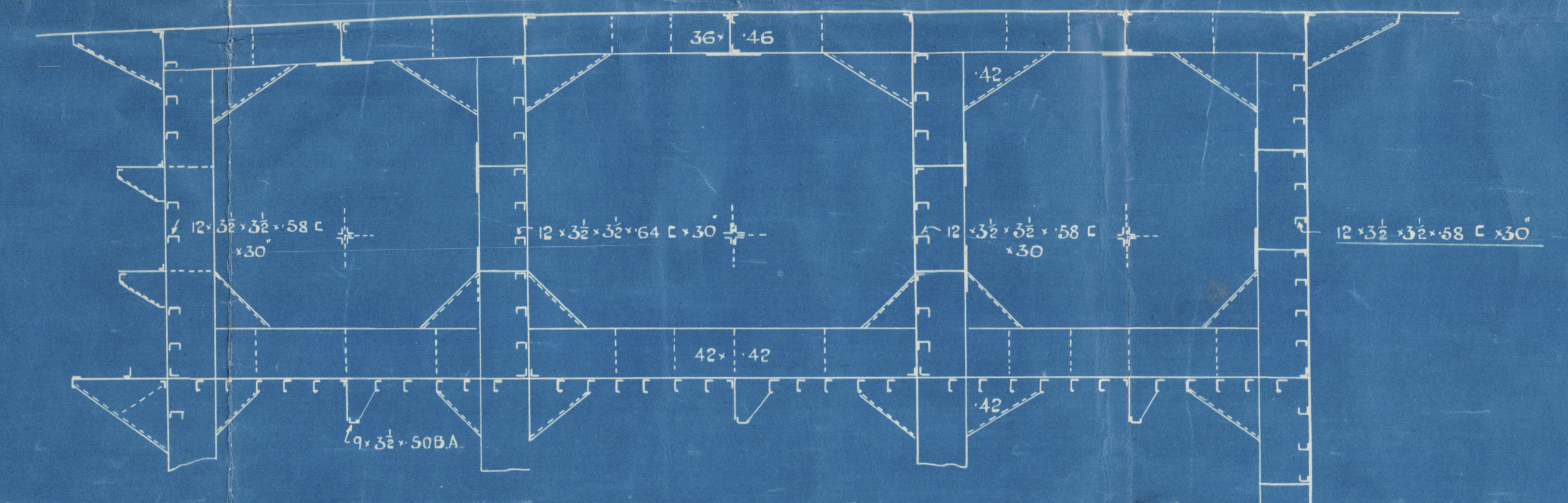
SECTION IN WAY OF WEB FRAME

STANDARD VESSELS TYPE 'A'
GUIDANCE PLAN FOR THE CONVERSION OF SUCH VESSELS AS ARE REQUIRED
FOR THE CARRIAGE OF OIL FUEL HAVING A FLASH POINT ABOVE 150° F.

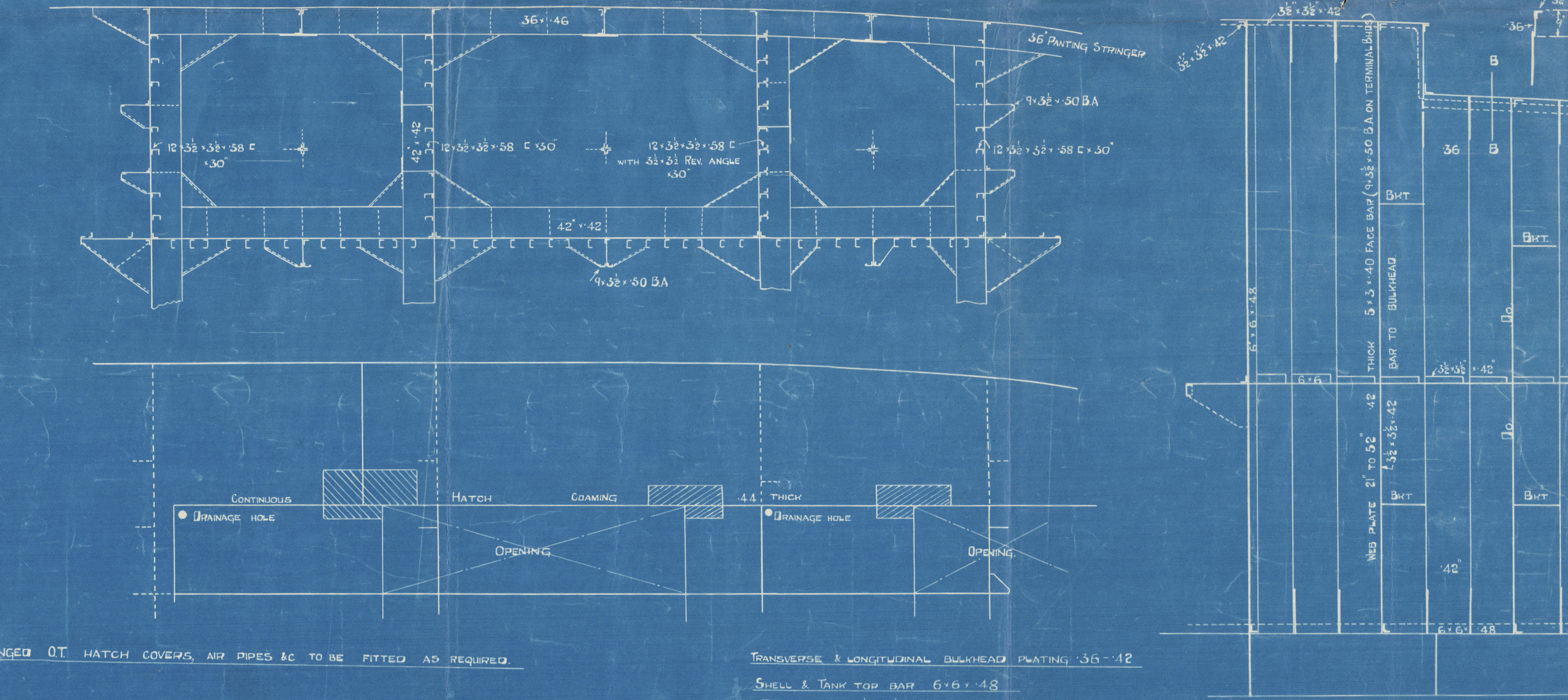
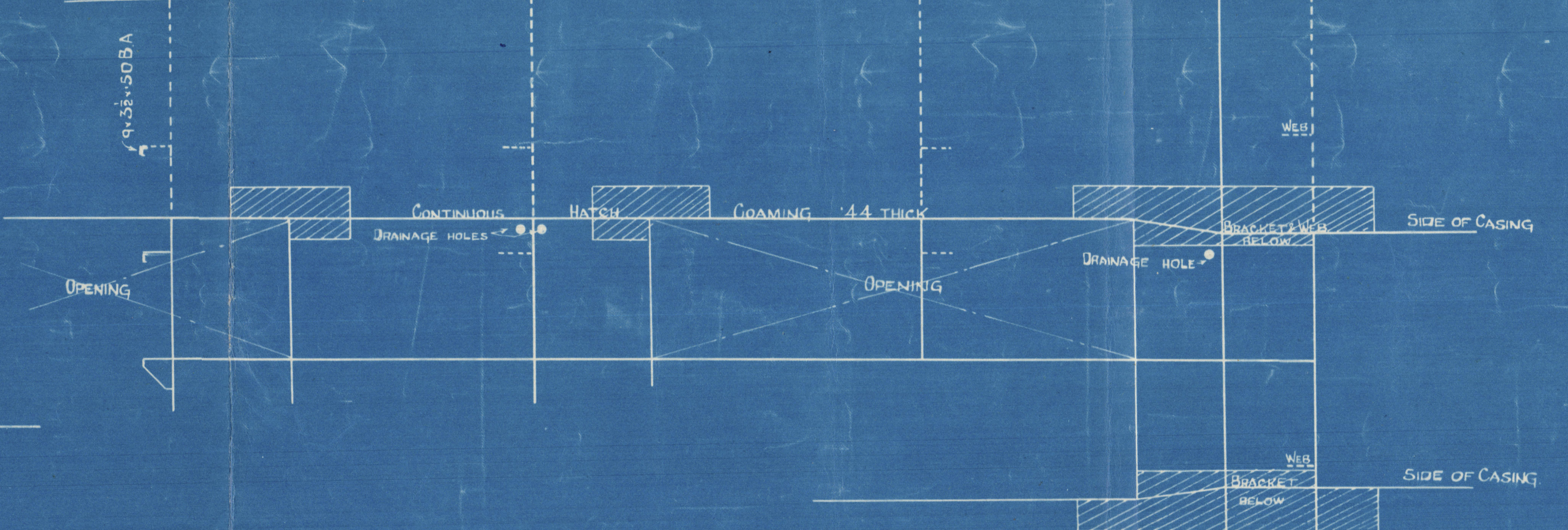
No 528 SHIP.



PLAN AT LEVEL OF SIDE STRINGER



PLAN AT UPPER DECK



TRANSVERSE & LONGITUDINAL BULKHEAD PLATING 3/16-1/2
SHELL & TANK TOP BAR 6x6x48
DECK BAR 38x38x42
OT FLOORS TO BE EFFICIENTLY STIFFENED

No 105 BULKHEAD

BUILDERS. *Harland & Wolff Ltd*

YARD No. *528*

PLAN.

Profile

Kambove

ex

J. Hervier
Sr

SHIP'S NAME,

Was Anyaw

GLASGOW REPORT No.

38 3107

W55-0069



© 2021

Lloyd's Register
Foundation