



TELEGRAMS:  
"BOILER, WOLVERHAMPTON."

TELEPHONES:  
1138 (3 LINES) WOLVERHAMPTON.  
REGENT 3216 (2 LINES) LONDON

Established 1840.

**WOLVERHAMPTON,**  
*Eng.*



TRADE MARK.

**LONDON OFFICE,**  
IMPERIAL HOUSE,  
KINGSWAY, W.C.2.

**MANCHESTER OFFICE,**  
KING'S HOUSE,  
KING STREET WEST.

**YORKSHIRE OFFICE,**  
42, ROYAL EXCHANGE CHAMBERS,  
CITY SQUARE,  
LEEDS.

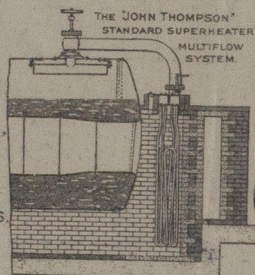
**GLASGOW OFFICE,**  
50, WELLINGTON STREET.

**CARDIFF OFFICE,**  
PRINCIPALITY BUILDINGS,  
QUEEN STREET.

**Dr. to**

Nearest Stations:-

L.M.&S.R. ETtingshall ROAD. (2 MINUTES)  
G.W.R. PRIESTFIELD. (10 MINUTES)



GOVERNING DIRECTORS.

JAMES THOMPSON.  
A. E. THOMPSON.  
W. J. THOMPSON.  
S. J. THOMPSON.

DIRECTORS.

E. BRAZIER.  
J. JEAVONS.  
D. A. HILL.  
P. L. TURNER.  
A. JEAVONS.  
W. E. PINNEGAR.

GOLD MEDALS  
1891-92 AND 1910.

DIPLOMA FRANCO-BRITISH  
EXHIBITION 1908.



Codes Used:-

A.B.C. 5TH & 6TH EDITIONS.  
ENGINEERING, LIEBERS, PRIVATE.  
WESTERN UNION. MARCONI.  
SELLS. BENTLEYS.

*Messrs. The Central Marine Engine Works.,*

WEST HARTLEPOOL.

YOUR ORDER NO. 3521.

19th. September.... 19 27.  
OUR ORDER NO. F.2716/33.

9. "Deighton" type Corrugated Furnaces  
6'10 $\frac{3}{4}$ " long x 3'8 $\frac{7}{8}$ "/4'1 $\frac{1}{2}$ " diameter x 4'1 $\frac{1}{2}$ "  
external diameter at mouth, with  
Stephen Gourlay back ends. 19/32" 10 0 0 0  
thick for Messrs. The Central Marine  
Engine Works, for their reference  
Boilers 996, our Works order No.  
F.2716/33.

Plate Makers:- Messrs. David Colville & Sons Ltd,  
Dalzell Steel & Iron Works,  
MOTHERWELL.

Test Particulars:-

One Plate test No.6638.  
One Plate test No.6956.  
One Plate test No.6704.  
Two Plates test No.6930.  
Two Plates test No.6786.  
Two Plates test No.6642.

