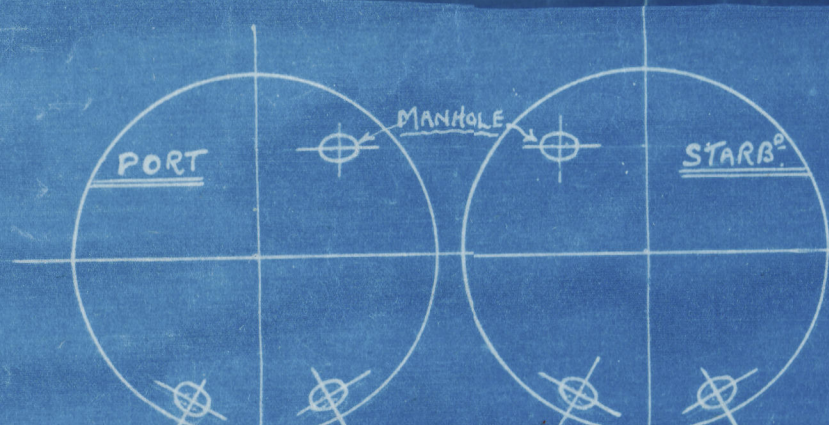


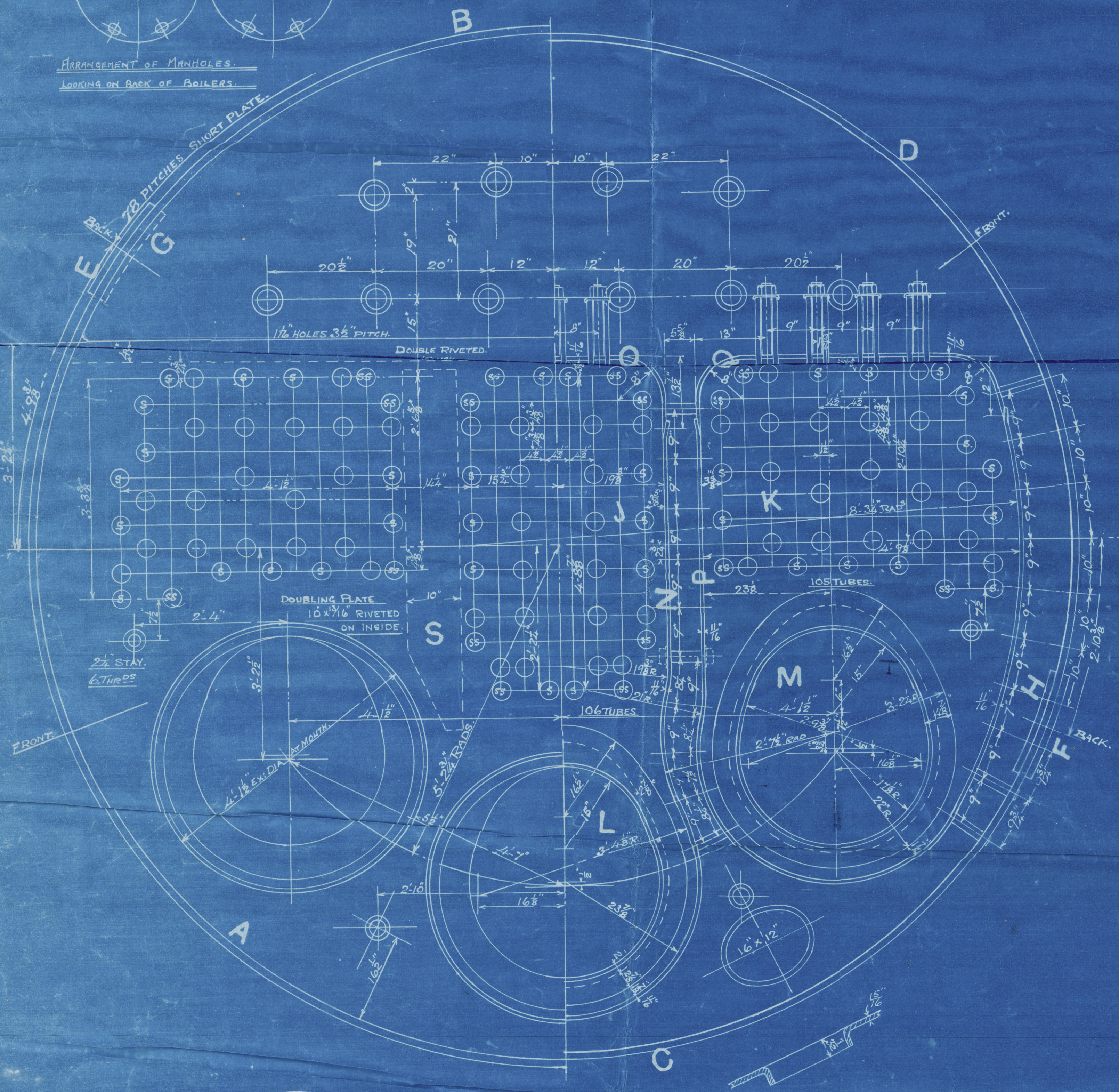
Approved by Lloyd 4/4/13. S2136-2144

Nº 6782

TOTAL HEATING SURFACE WITHOUT FRONT
TUBE PLATE = 2250 $\frac{1}{2}$ EACH BOILER.



Arrangement of Manholes.
Looking on BARK of BOILERS.



SCOTIA ENGINE WORKS

28-5-18

BOILER

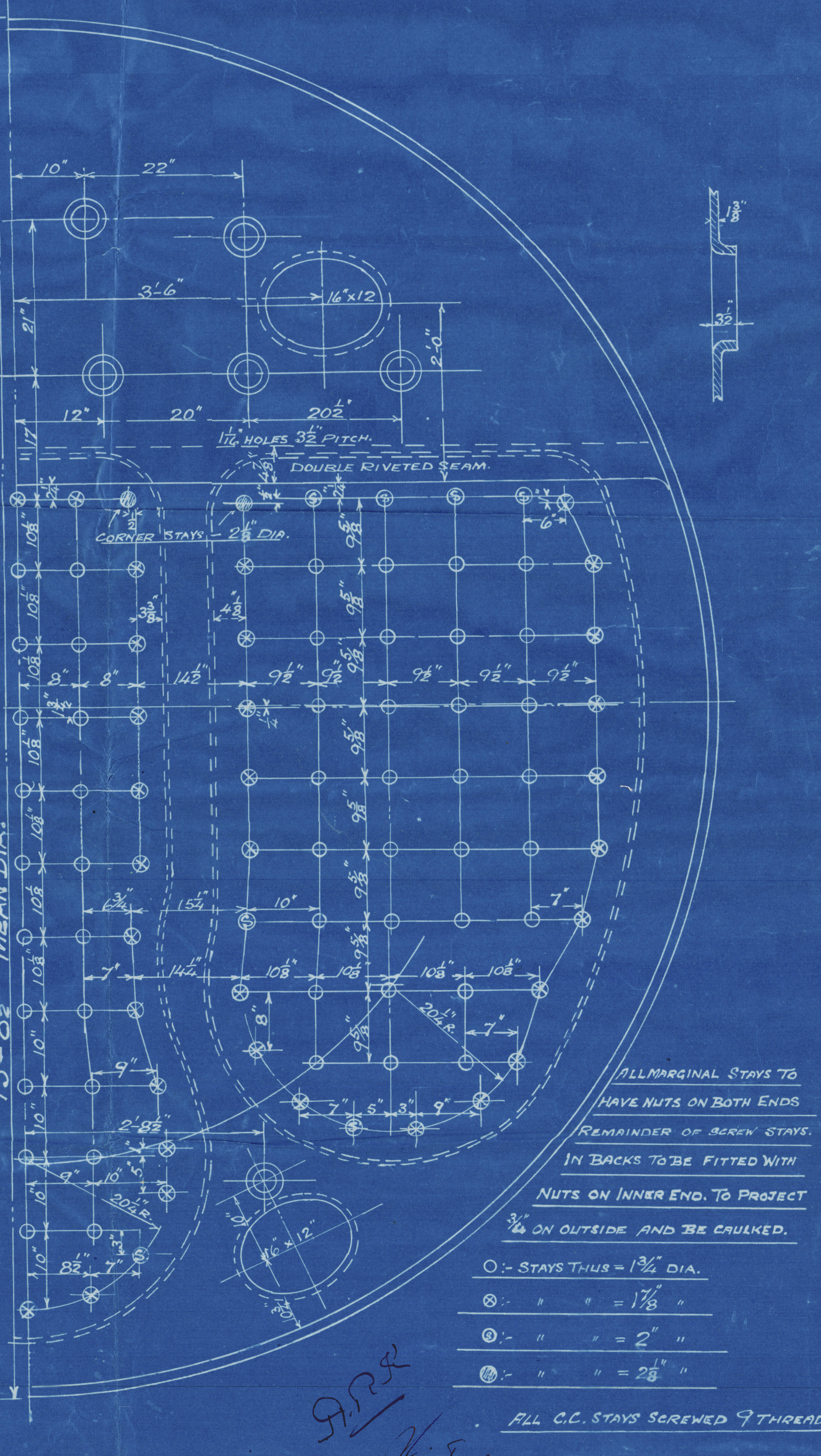
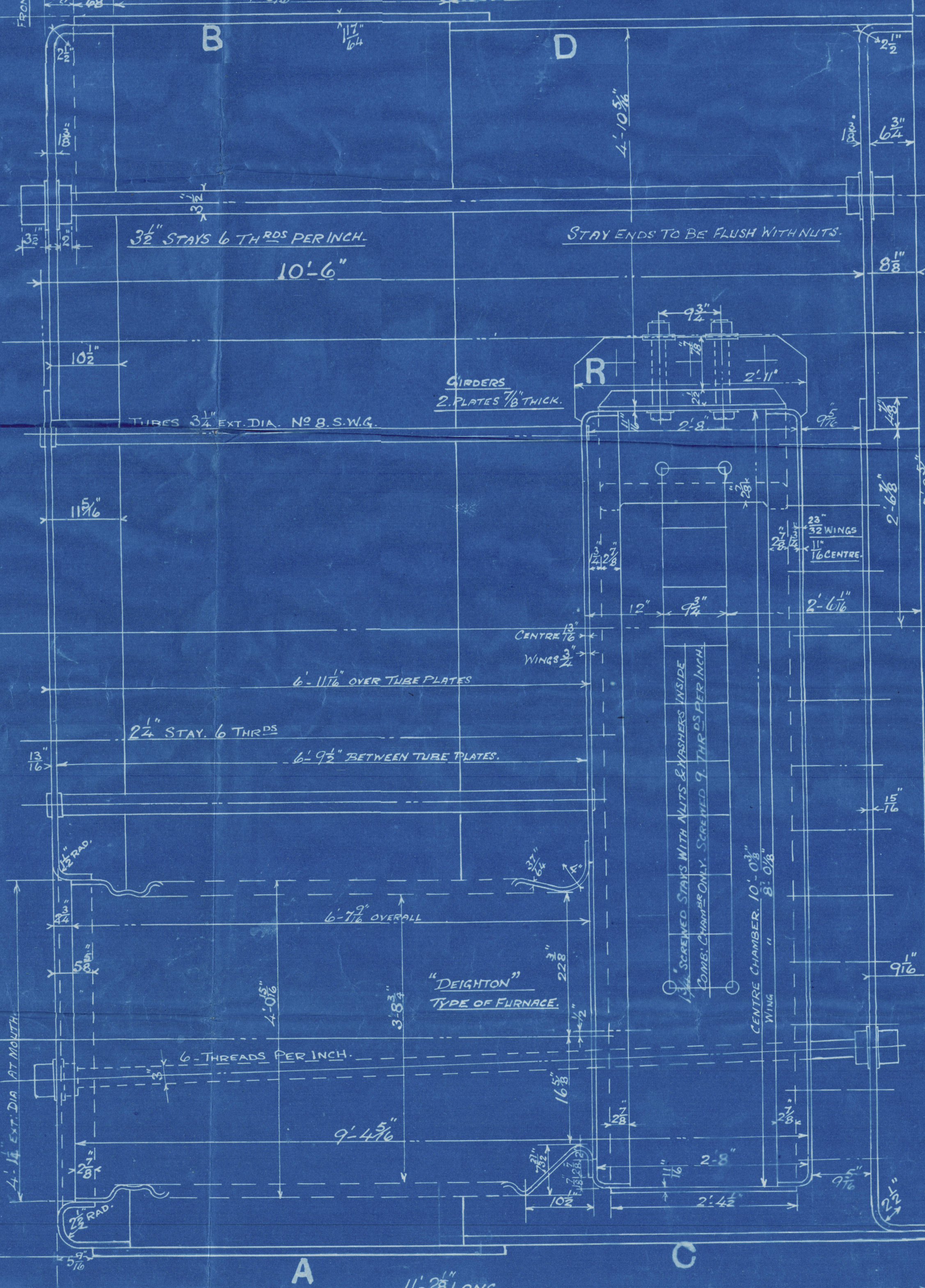
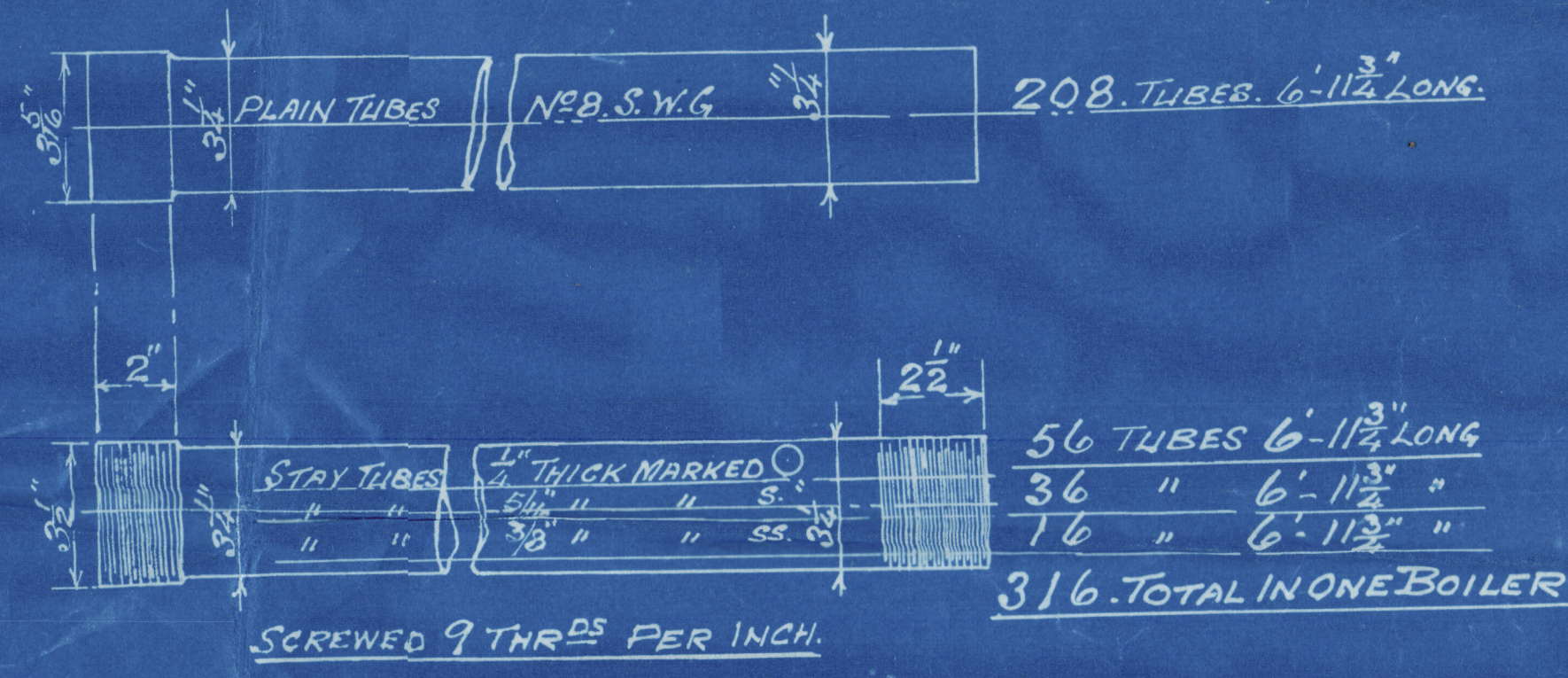
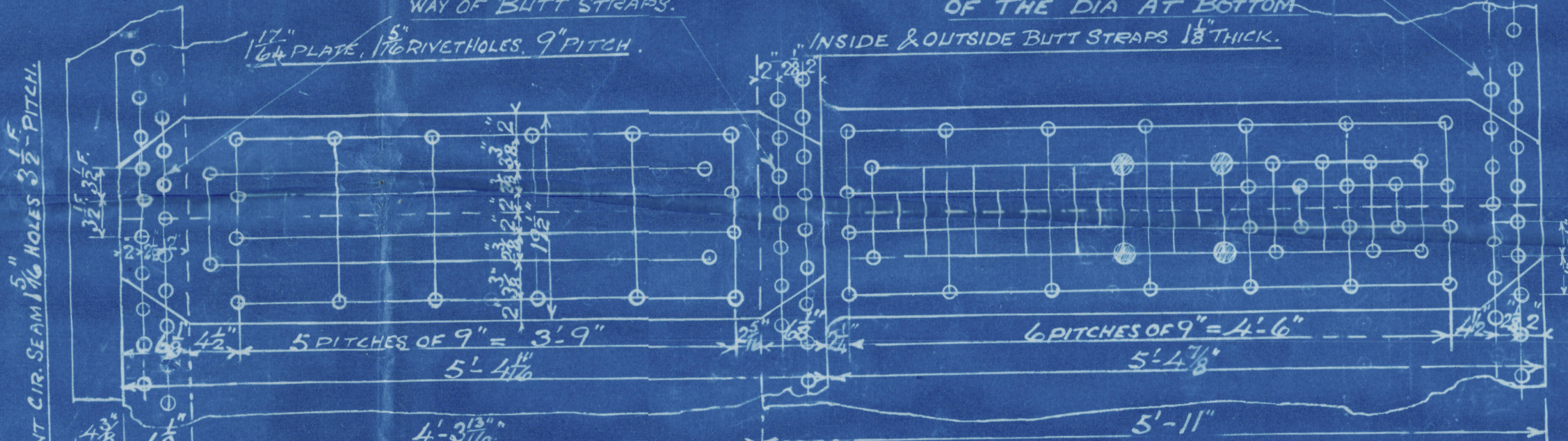
SCALE: 1. INCH TO ONE FOOT
WRITTEN DIMENSIONS ONLY TO BE TAKEN

WORKING PRESSURE 180 LBS PER SQ INCH.

TENSILE STRENGTH OF SHELL PLATES & BUTT STRAPS
28 TO 32 TONS PER SQ INCH
" " OF GIRDER PLATES & LONGITUDINAL STAYS
28 TO 32 TONS PER SQ INCH

ALL OTHER PLATES, STAYS & RIVETS 26 TO 30 " " " "
ALL PLATES, STAYS & RIVETS OF STEEL
ALL TUBES OF WROST IRON.
ALL RIVET HOLES DRILLED IN PLACE, RIVETING HYDRAULIC

NOTE: EVERY RIVET FITTED IN
WAY OF BUTT STRAPS.
17" PLATE 1/8" RIVET HOLES 9" PITCH.
INSIDE & OUTSIDE BUTT STRAPS 18" THICK.



ALL MARGINAL STAYS TO
HAVE NUTS ON BOTH ENDS
REMAINDER OF SCREW STAYS
IN BACKS TO BE FITTED WITH
NUTS ON INNER END TO PROTECT
3/4" ON OUTSIDE AND BE CAULKED.

- - STAYS THUS = 1 3/4 DIA.
- - " " = 1 1/8 "
- - " " = 2 "
- - " " = 2 1/8 "

ALL C.C. STAYS SCREWED 9 THREADS PER INCH

Nº S2147

2. OFF



W 55-0152

SUNDERLAND

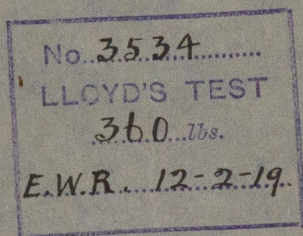
RICHARDSONS WESTGARTH & CO.

(2) BOILERS N^o 2147.

W.P. = 180 LBS.

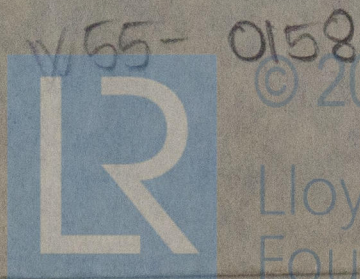
S. P. AUSTIN & SON'S S/SN^o ~~303~~ 303

" H. TYPE



Mardinian

SUNDERLAND RPT. NO. 27606



© 2021

Lloyd's Register
Foundation