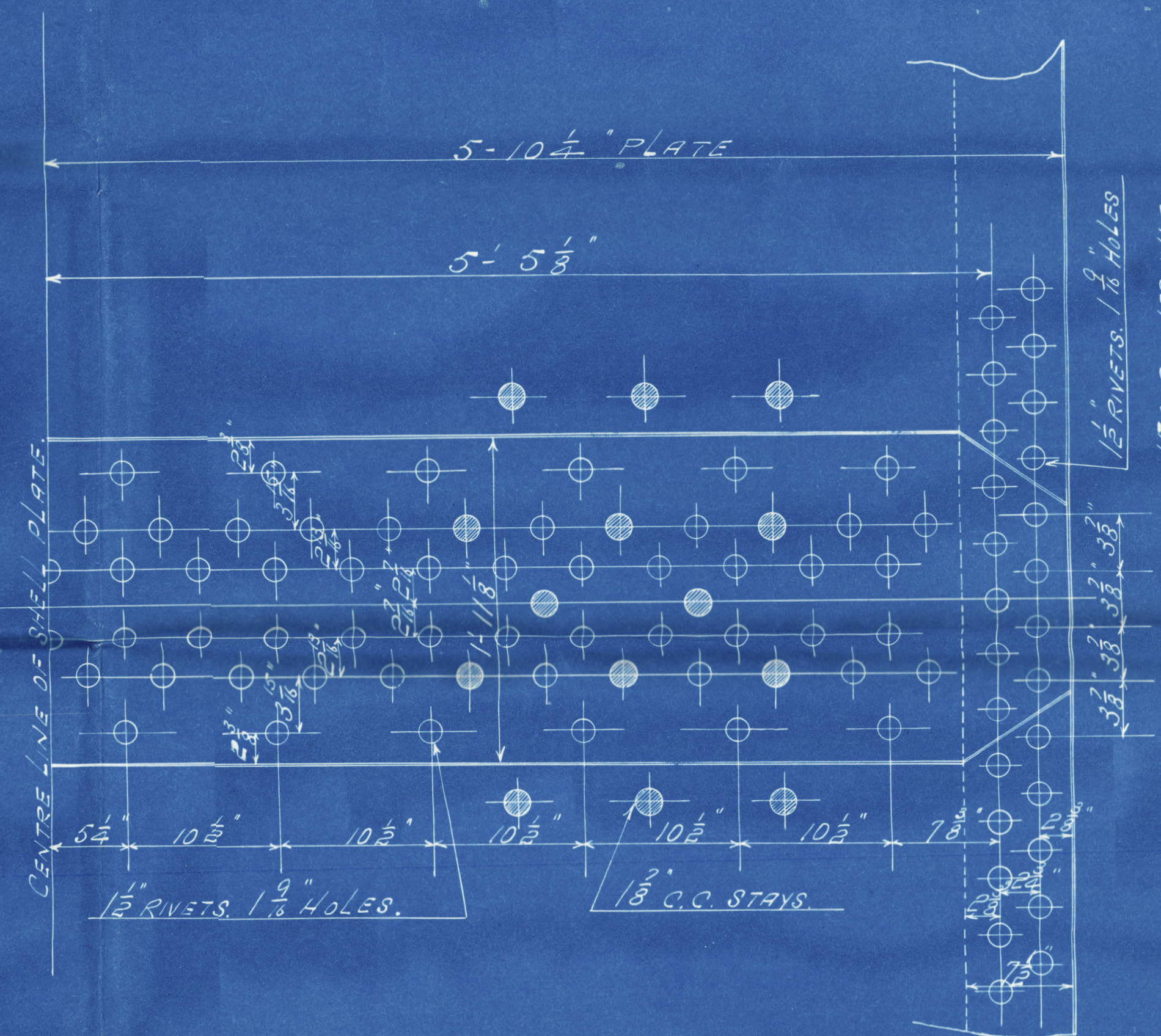


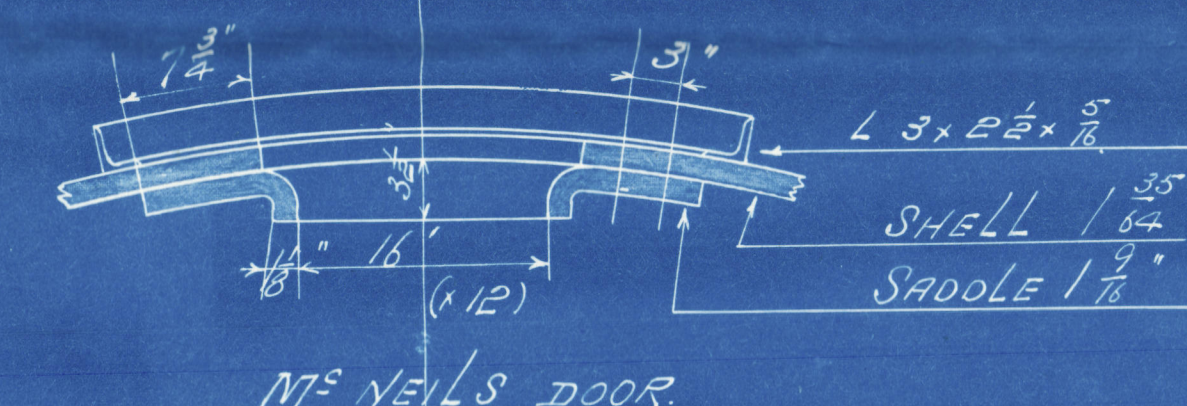
17.8.14

DETAIL OF SHELL RIVETING.

SCALE  $\frac{1}{8}'' = 1 \text{ FOOT}$



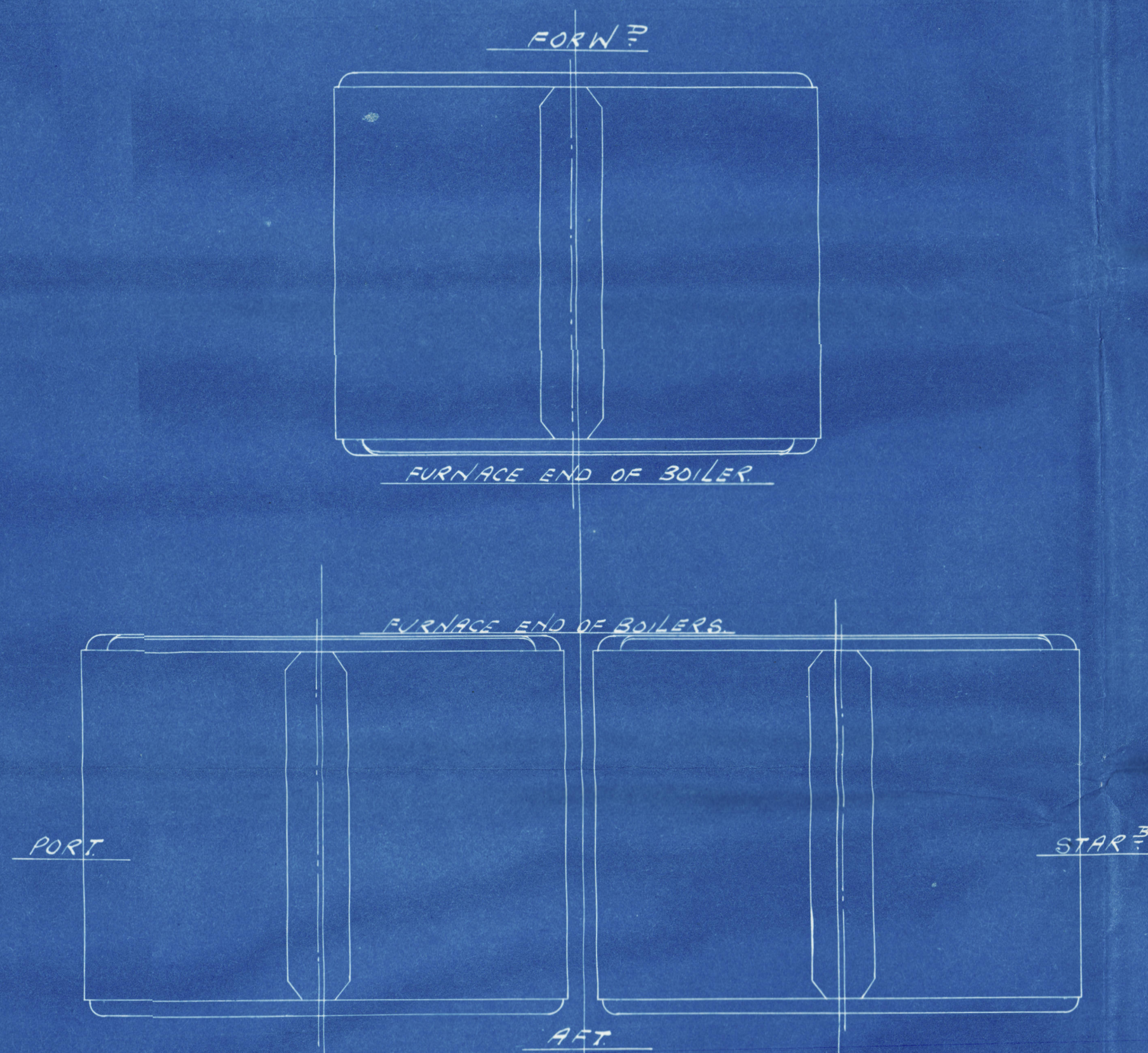
RIVETING IN.  
SHELL 1/4" RIVETS 1/2" HOLES 1/8" PITCH 10 1/2" PLATE 3/4" RIVETS 5/8" 3/4" 4 1/2"  
BUTT STRAPS 1/4" THICK, SHELL PLATES & STRAPS TO HAVE A TENSILE  
STRENGTH OF 29.033 TONS PER SQUARE INCH.  
CIRCUMFERENTIAL SEAMS. BUT LLOYDS  
RIVETS 1/2" HOLES 1/8" PITCH 3 3/4" PLATE 3/4" RIVETS 5/8" 3/4" 4 1/2"  
ALL HOLES DRILLED IN PLACE, BOILER STEEL, TUBES, GIRDERS & SCREWED  
STAYS IN COMB CHAMPS OF IRON.  
UNDER LLOYDS AND BOARD OF TRADE SURVEY (SPECIAL CERTIFICATE)  
FOR A WORKING PRESSURE OF 200 LBS PER SQ INCH.



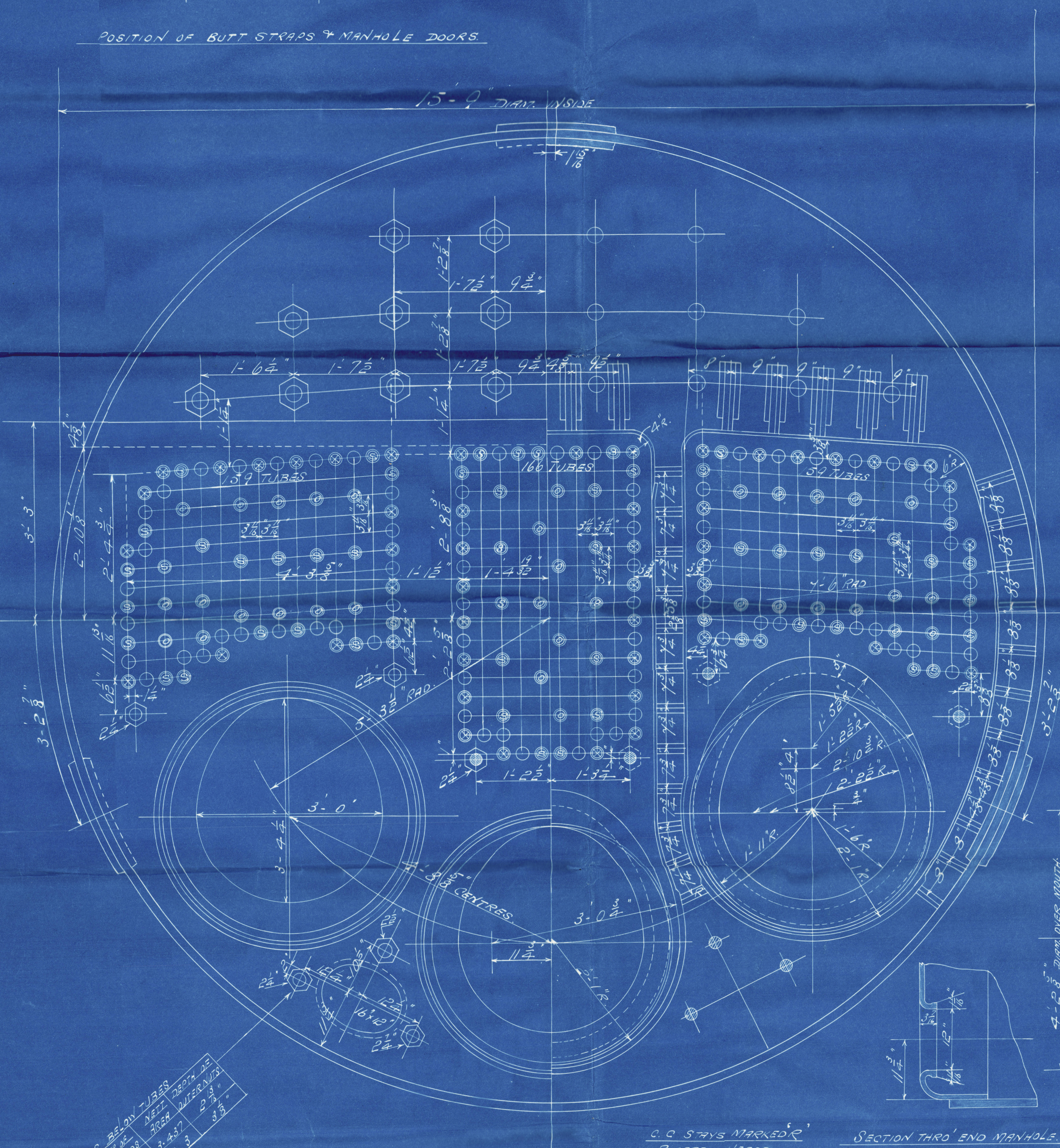
PITCHES OF 3 3/4" AT EACH END.  
32- 1/2" RIVETS  
1/8" HOLES.

RIVETING AT SHELL MANHOLE.

PARTICULARS	
HEATING SURFACE IN 48 TUBES	2534 #
3 COMB CHAMPS	328 "
3 FURNACES	187 "
TOTAL	3049 "
GRATE SURFACE (5'-0" BARS)	575 "
AREA THRO TUBES	1127 "
RATIO HEATING SURFACE GRATE SURFACE	= 53
GRATE SURFACE AREA THRO TUBES	= 5.1
STEAM SPACE IN CU FEET FOR 3 BOILERS	536
HEATING SURFACE	9147 #
GRATE SURFACE	1725 "



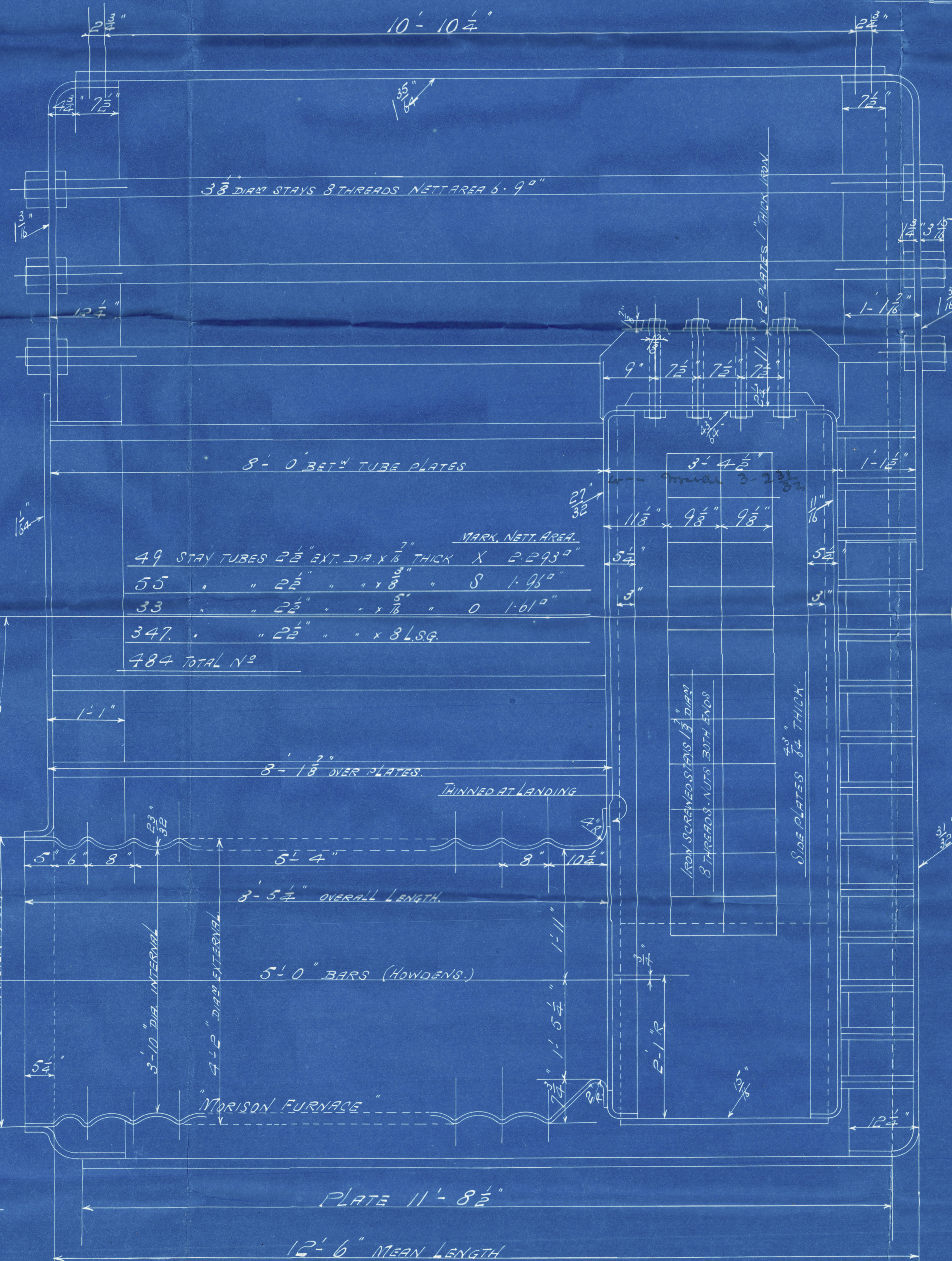
POSITION OF BUTT STRAPS & MANHOLE DOORS.



STAYS	REINFORCED	NET AREA	NET AREA
2 1/2"	2 1/2"	3.447	2.88
2 1/2"	2 1/2"	3.447	2.88
2 1/2"	2 1/2"	3.447	2.88

C.C. STAYS MARKED  
RIVETED HEADS

SECTION THRO' END MANHOLE.



3 MAIN BOILERS FOR N°452.

SCALE 1" = 1 FOOT

12.8.14.

REPEAT FOR N°453.



MARGINAL STAYS IN COMB CHAMPS BACKS.  
MARKED 2 1/2" DIA. 8 THREADS NET AREA 3.85.0"  
" 2 1/2" " 8 " " 3.03.0"  
" 2 " 8 " " 2.66.0"  
ALL TO BE DRILLED TO HAVE NUTS BOTH ENDS.

Lloyd's Register  
W553-0173

452-3



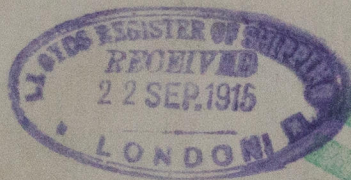
Dunsmuir Jackson. Col<sup>d</sup>  
Boiler N<sup>o</sup> 452/3 WP 200  
(Main Boiler) WPM. 15/8/14

S/s Russell N<sup>o</sup> 680  
S/s Cornell. N<sup>o</sup> 367



S/s Dara

GLASGOW REPORT No. 35459



© 2021

Lloyd's Register  
Foundation