

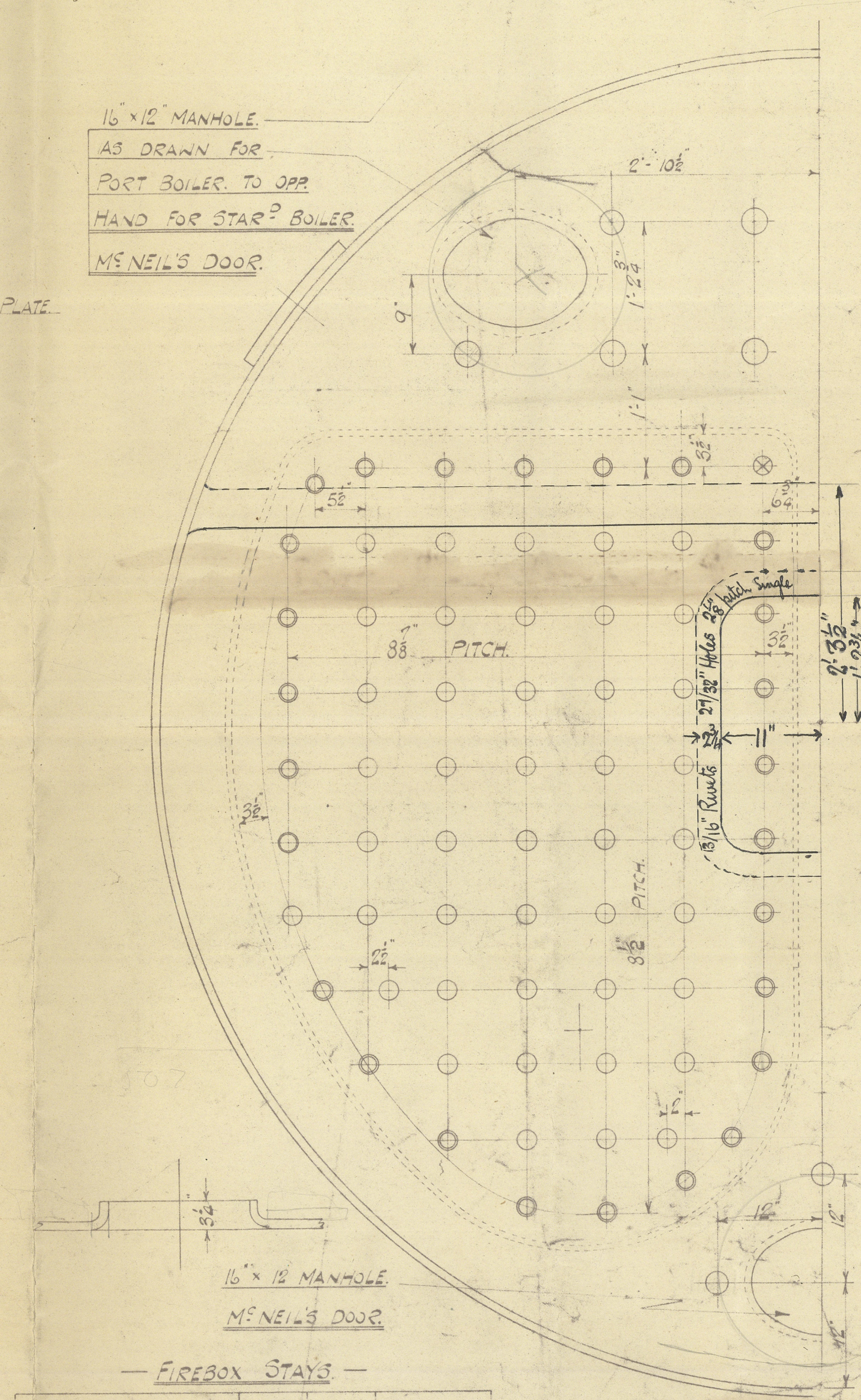
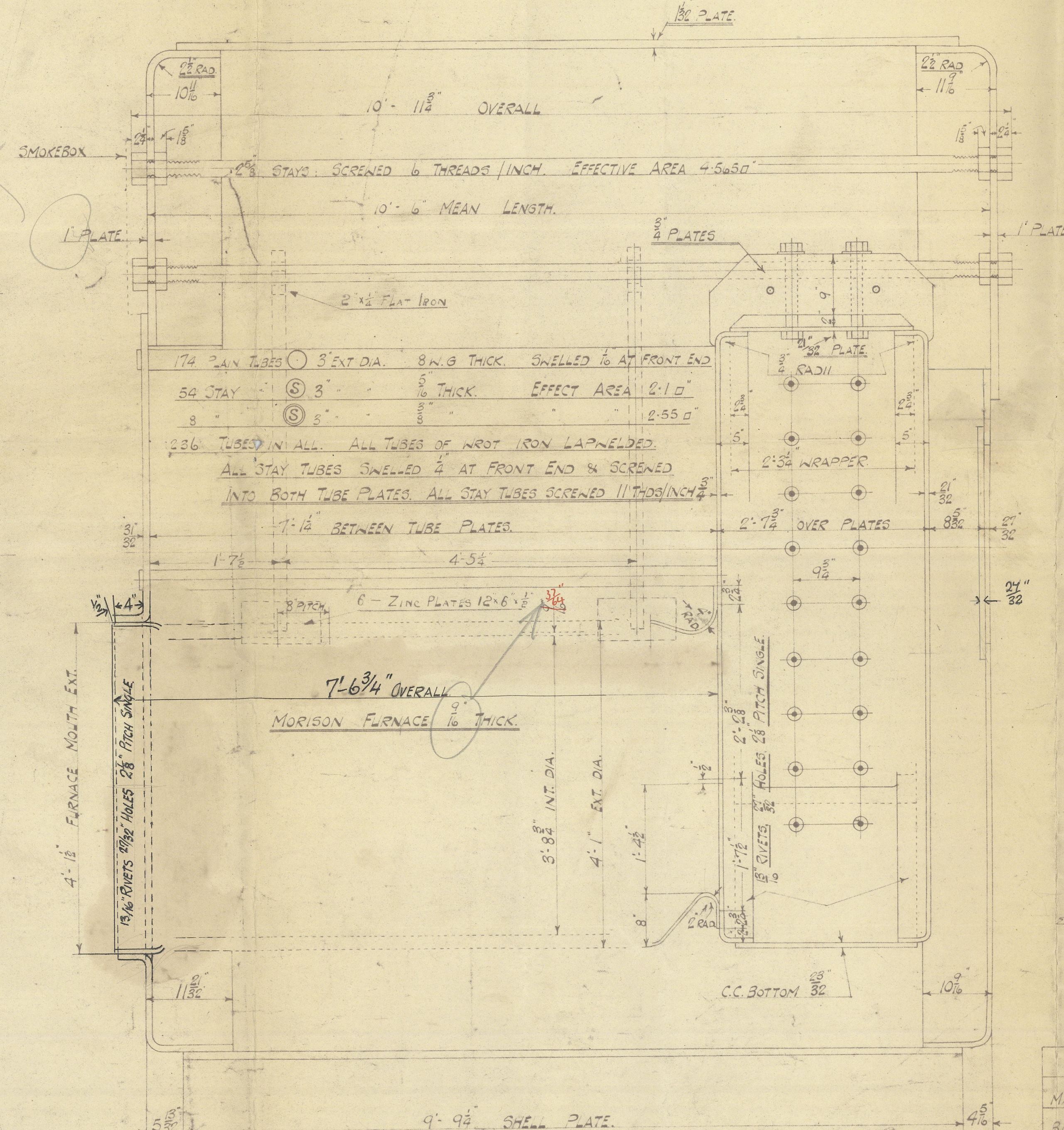
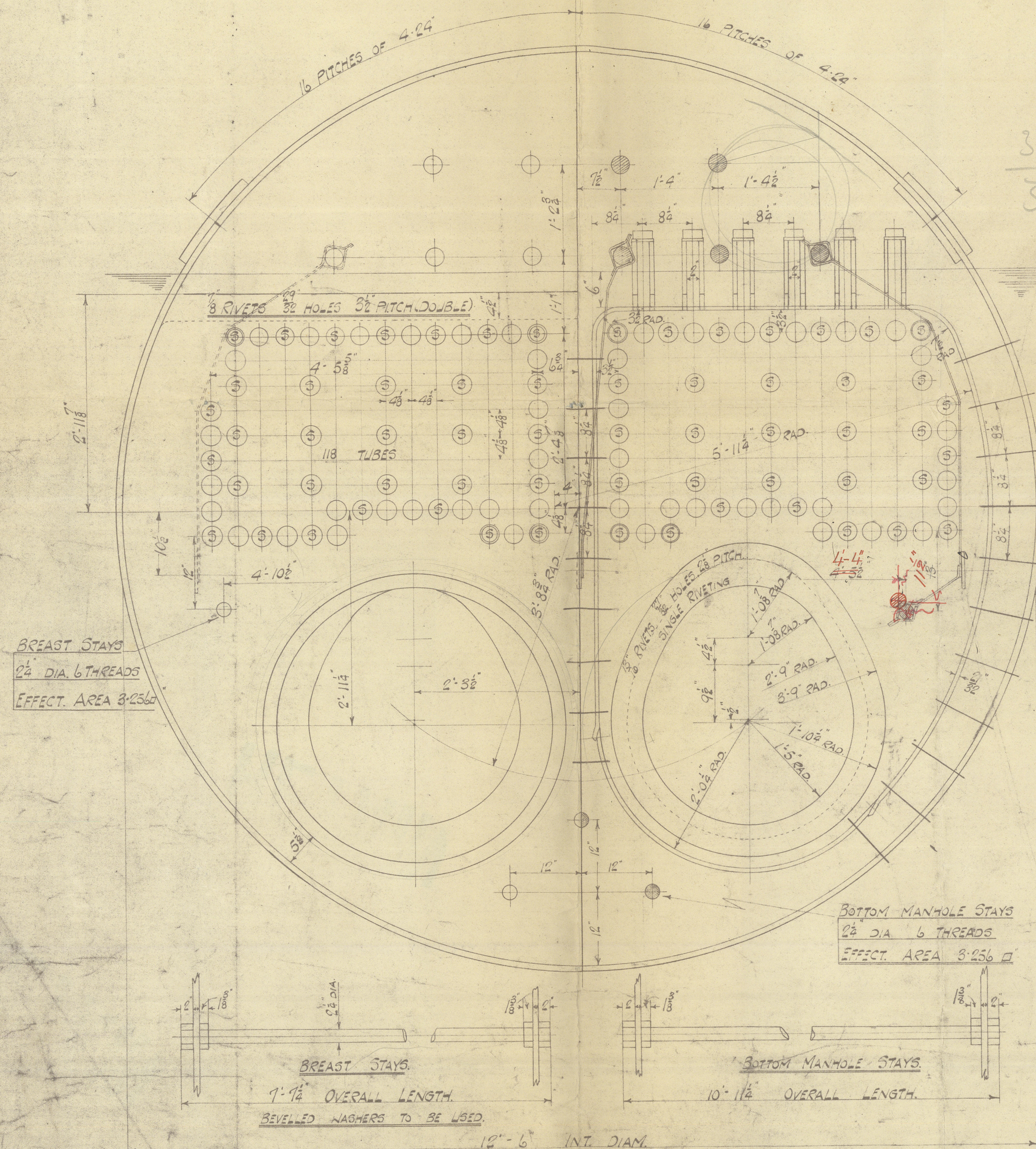
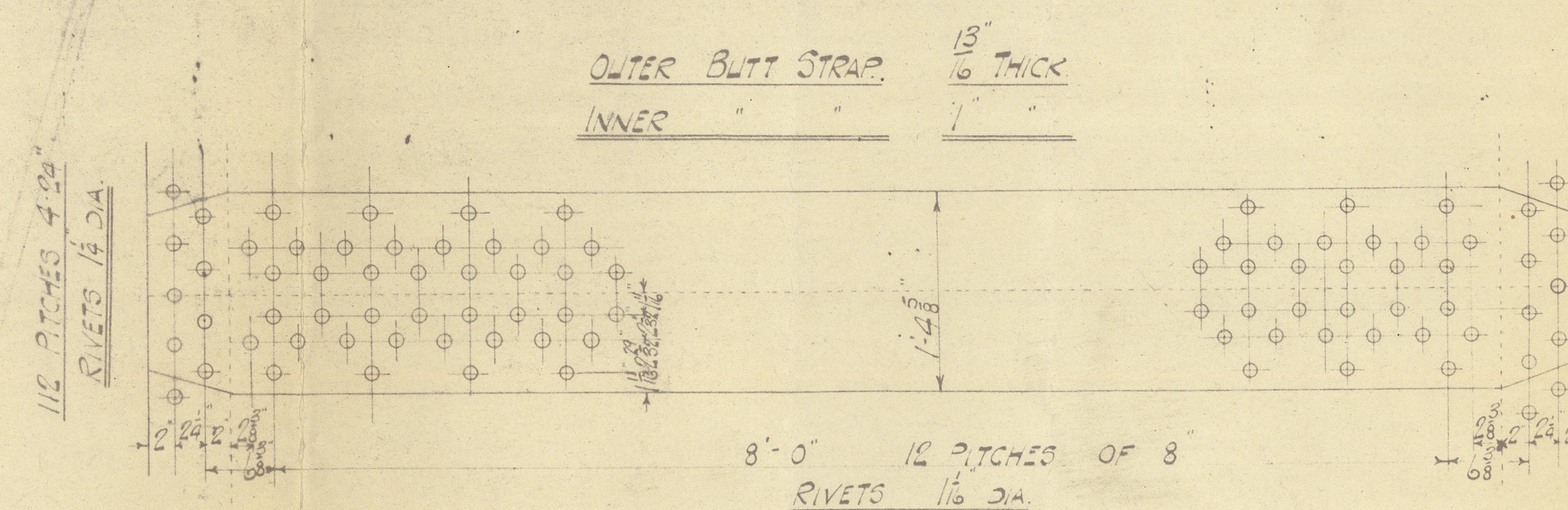
2.2.23

SURFACES	
TUBES	1317.0 sq ft
FIREBOX TOPS & SIDES	88.6 "
BACKS	62.0 "
TUBE PLATES	43.2 "
FURNACES	98.1 "
TOTAL HEATING SURFACE	1608.9 "
GRATE AREA (BARS 6" x 0)	45.0 sq ft
TUBE	9.8 "
WATER	110.0 "
STEAM SPACE	235.0 "
GRATE AREA HEATING SURFACE	1.36.0
TUBE	1.24.0
AREA	4.85:1
WATER	1:2.45
STEAM SPACE	1:5.2
HEIGHT OF WATER	162 TONS

RIVETING		
RIVET HOLE DIA.	1 1/8"	END CIRCUM.
PITCH	8"	4.24"
% PLATE	80	52.5
% RIVET	93	85.9

ALL RIVET HOLES DRILLED IN PLACE

LIMITS OF TENSILE STRENGTH	
SHELL & BUTT STRAPS	28 TO 32 TONS
END PLATES C.C. PLATES & C.C. STAYS	26 " 30 "
GIRDERS & LONGIT. STAYS	28 " 32 "
FURNACES	26 " 30 "
RIVETS	26 " 30 "



FIREBOX STAYS			
POSITION	MARK	DIA	EFFECT AREA
MARGINAL RING	○	1 1/2"	2.08 sq ft
BACK NESTS	○	1 1/8"	1.73 sq ft
SIDES & TOPS	○	1 1/2"	2.08 sq ft
TOP CORNER BACK	⊗	2"	2.71 sq ft

ALL FIREBOX STAYS SCREENED 9 THREADS/INCH.

ALL FIREBOX STAYS SCREENED THRU BOTH PLATES & NUTTED ON BOTH ENDS. NUTS FOR 2\"/>

MAIN BOILER NO 1129-30.
 12' 6" INT. DIA. X 10' 6" MEAN LENGTH.
 OFF LLOYDS SURVEY.
 X.P. 180 LBS 10" TEST PRESS 320 LBS 10"
 SCALE: 1" = 1 FOOT.

BOW, McLAHLAN & CO. L
 ENGINEERS, SHIPBUILDERS, & IRONFOUND
 THISTLE WORKS.
 PAISLEY.
 Trading No. 28/23 Date 28/1/23

S.S. "GRONANT ROSE"

Bow, The Lachlan & Co. Ltd.

2 Boilers N^o 1122+30.

Original Approved Plan.

For Boilers as made -

please see
Amended Plan JTB

RETAIN

GLASGOW REPORT NO.

1593
2

1440824

RETAIN



© 2021

Lloyd's Register
Foundation

W574-0092