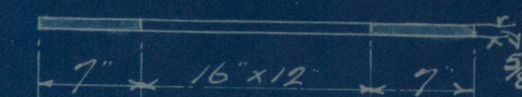
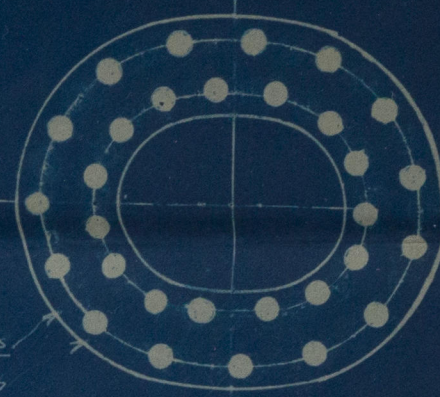


Shell Hydraulic Rivetted where practicable.
 All holes drilled in place after bending.
 Shell Plates 7/16" Thick. Rivet holes 1/8" x 4 3/8" pitch.
 Circumferential Seams Single Rivetted 1 1/8" holes. 2 1/2" Pitch

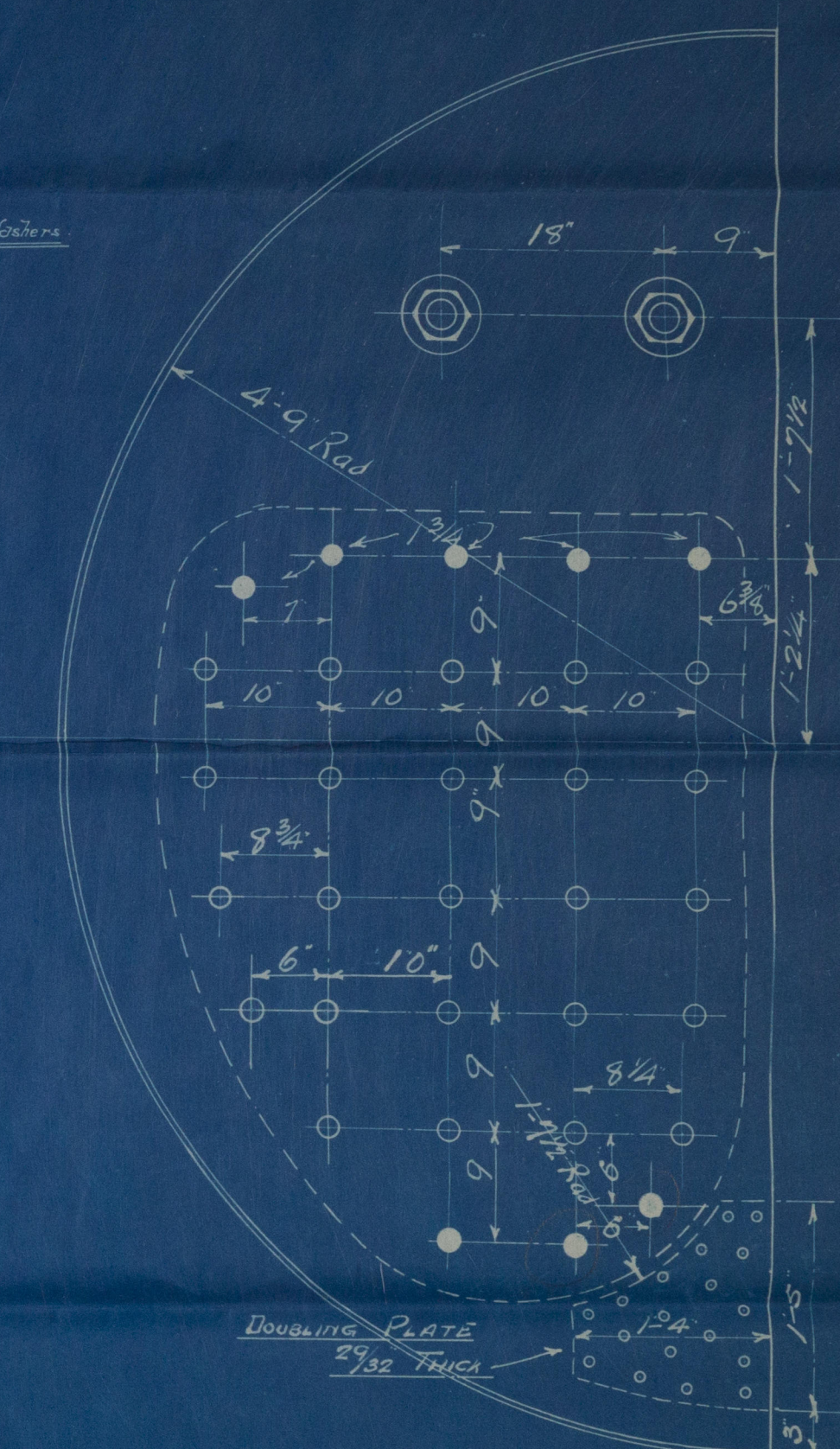
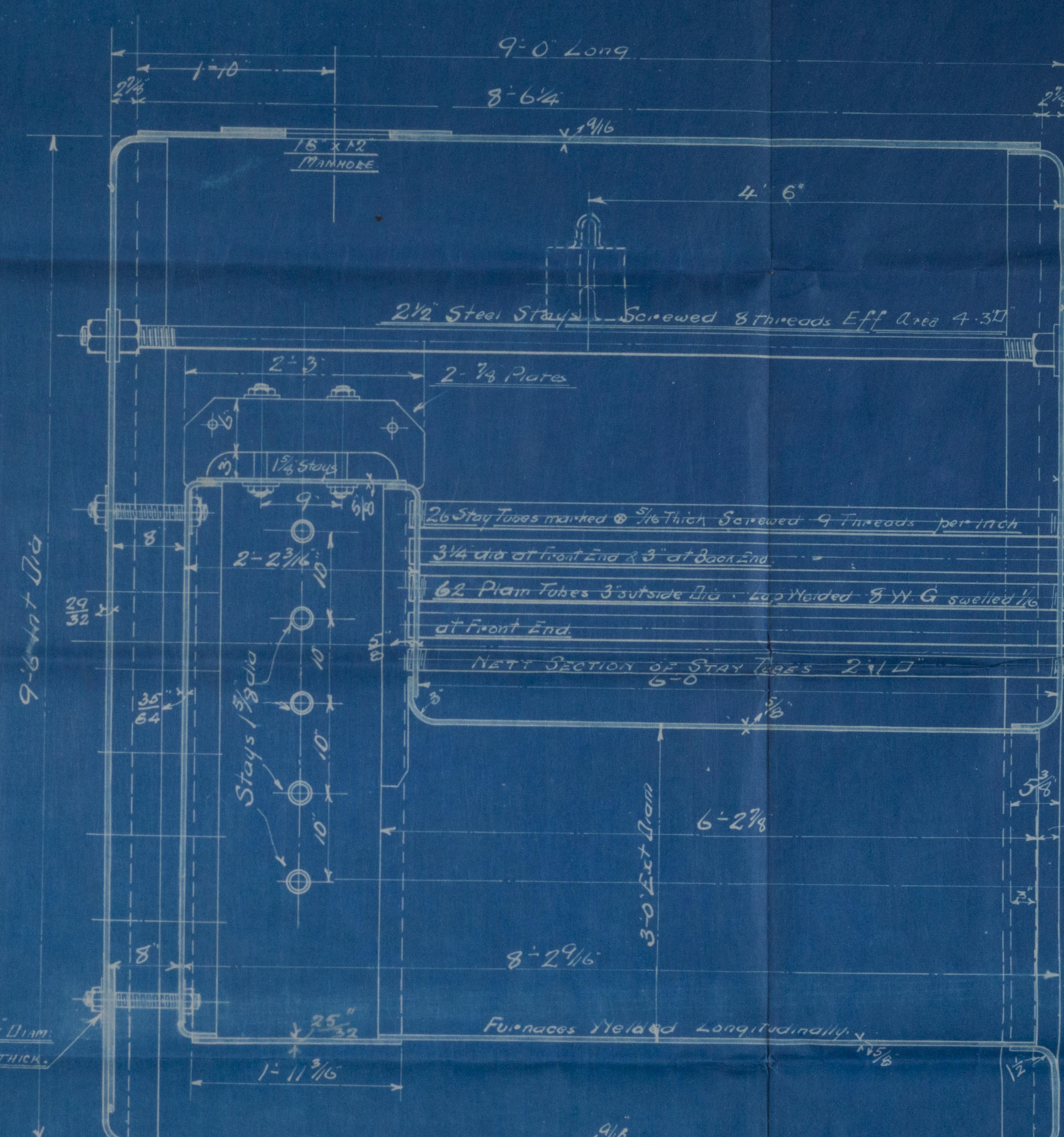
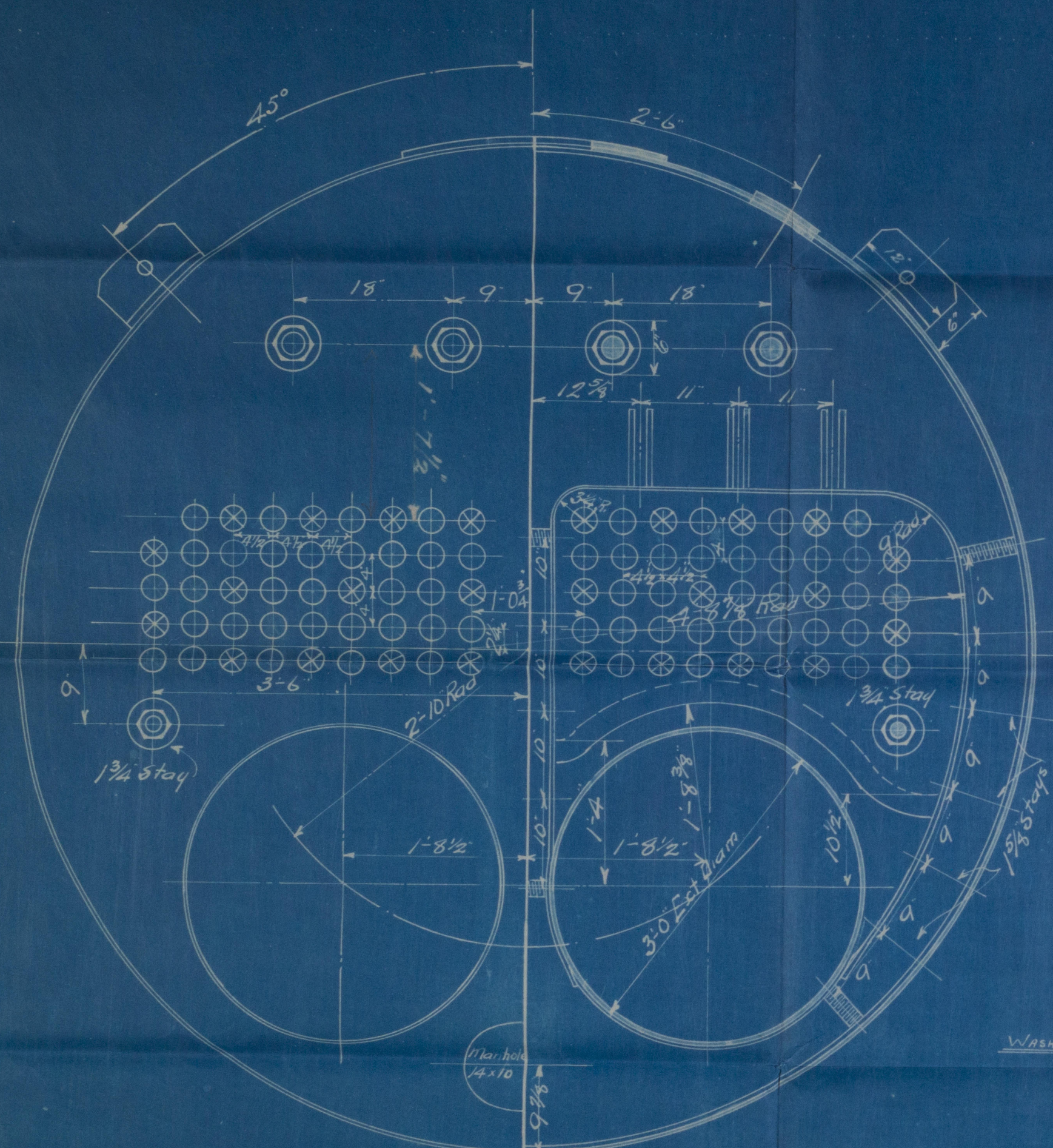


Manhole Doubler
 Double Rivetted

7/8" Rivets
 about 5 1/2" P. Ten

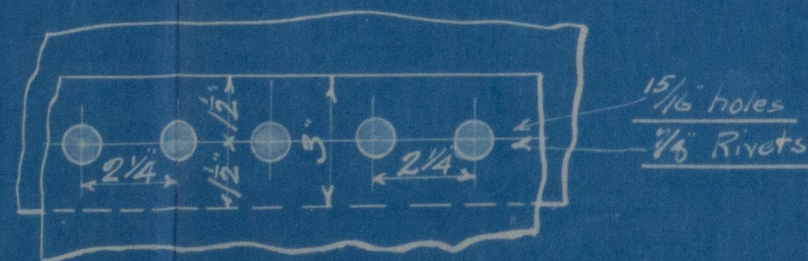


Manhole Doubler



HEATING SURFACE	SQ. FT.
TUBES	411
FURNACES	58
COMB. CHAMBER	100
FRONT TUBE PLATE	11
TOTAL	580

TOTAL GRATE AREA - 27 SQ. FT.
 FIREBARS - 4'-6" LONG



INTERNAL SEAMS

TO PASS LLOYD'S SURVEY FOR 100 LBS WORKING PRESSURE
 TENSILE STRENGTH OF SHELL PLATES 28 TO 32 TONS
 " " " ALL OTHER PLATES 26 TO 30 TONS
 ALL STAYS TO BE OF MILD STEEL
 ALL SCREWED STAYS FITTED WITH NUTS & WASHERS
 AT BOTH ENDS

Stays shown	● 1 3/4" dia Eff Area 2.10 - 11 Threads per inch
"	○ 1 3/8" dia Eff .. 1.994 - 11 "
"	○ 1 1/2" " " 1.60 - 11 "

MB
DRAWING N° 634

STEEL BOILER — 9'-6" DIAM x 9'-0" LONG x 100 LBS

Scale 1" = 1 foot

MB
ORDER N° 107



Donkey Boiler

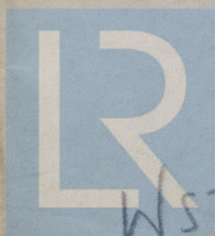
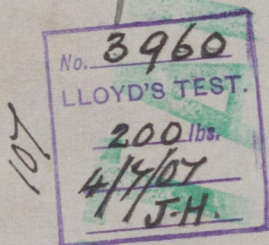
No MB 107

Blake Boiler Wagon
& Eng Co. Ltd

Furness Withy & Co
S.P. No 303.

Indy report No 5116
ss. competitor:

Hpl. Report No. 13336.



© 2020

Lloyd's Register

WS75-0057
Foundation