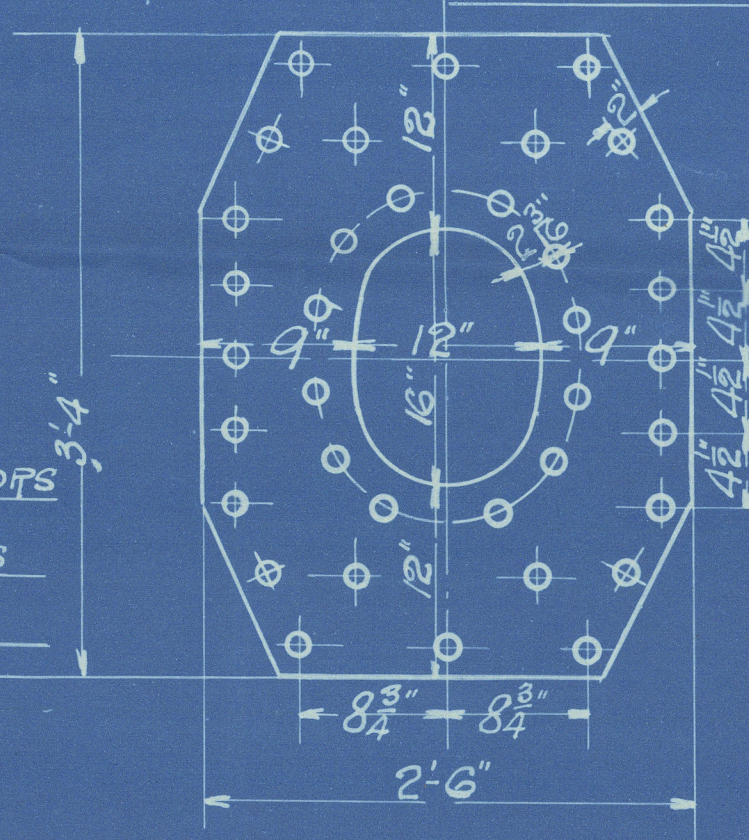


DIAM OF BOILER 13'-9" inside diam
 LENGTH OF D⁹ 11'-0" net length
 NUMBER OF TUBES 194
 LENGTH OF D⁹ 6'-8 1/2" between plates
 DIAM OF D⁹ 5 1/2" AREA THRO TUBES 10 sq ft
 HEATING SURFACE IN TUBES 1192 sq ft
 TOTAL HEATING SURFACE 1541 sq ft
 FIRE BAR SURFACE 57 sq bars 48.125 sq ft
 DIAM OF SAFETY VALVES
 CUBIC FEET OF STEAM SPACE 328 cu feet
 WORKING PRESSURE 200 lbs LLOYDS

1 3/8" DOUBLING PLATE
 1 1/32" RIVETS 1 1/4" HOLES

FITTED OUTSIDE SHELL WITH SHORT AXIS

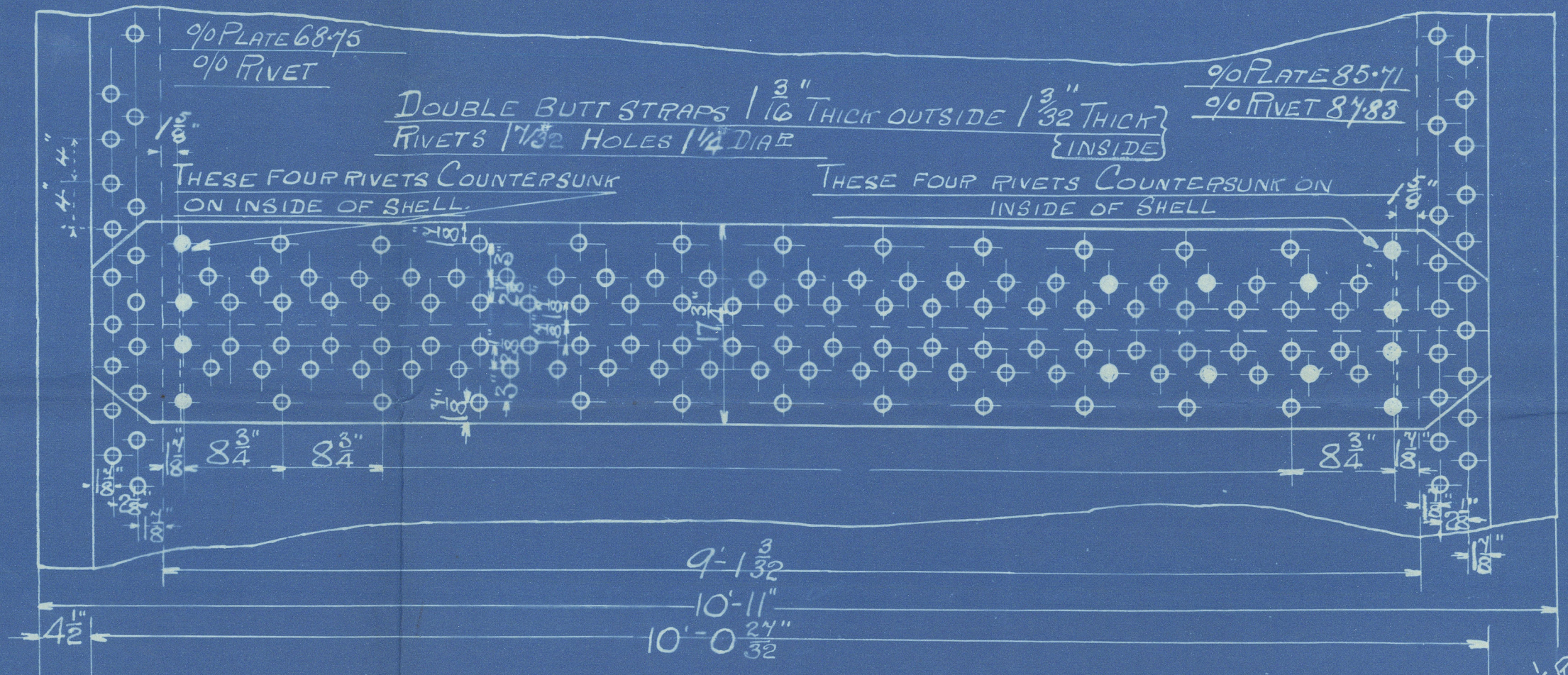
LONGITUDINALLY.



NOTE STUDS ON MANHOLE DOORS
 ARE NOT TO PROTECT THRO' NUTS
 WHEN NUTS ARE NIPPED UP

CIRCUMFERENTIAL SEAMS 4" PITCH
 1 1/32" RIVETS 1 1/4" DIA HOLES

LONGITUDINAL SEAMS 8 3/4" PITCH
 1 1/32" RIVETS 1 1/4" DIA HOLES

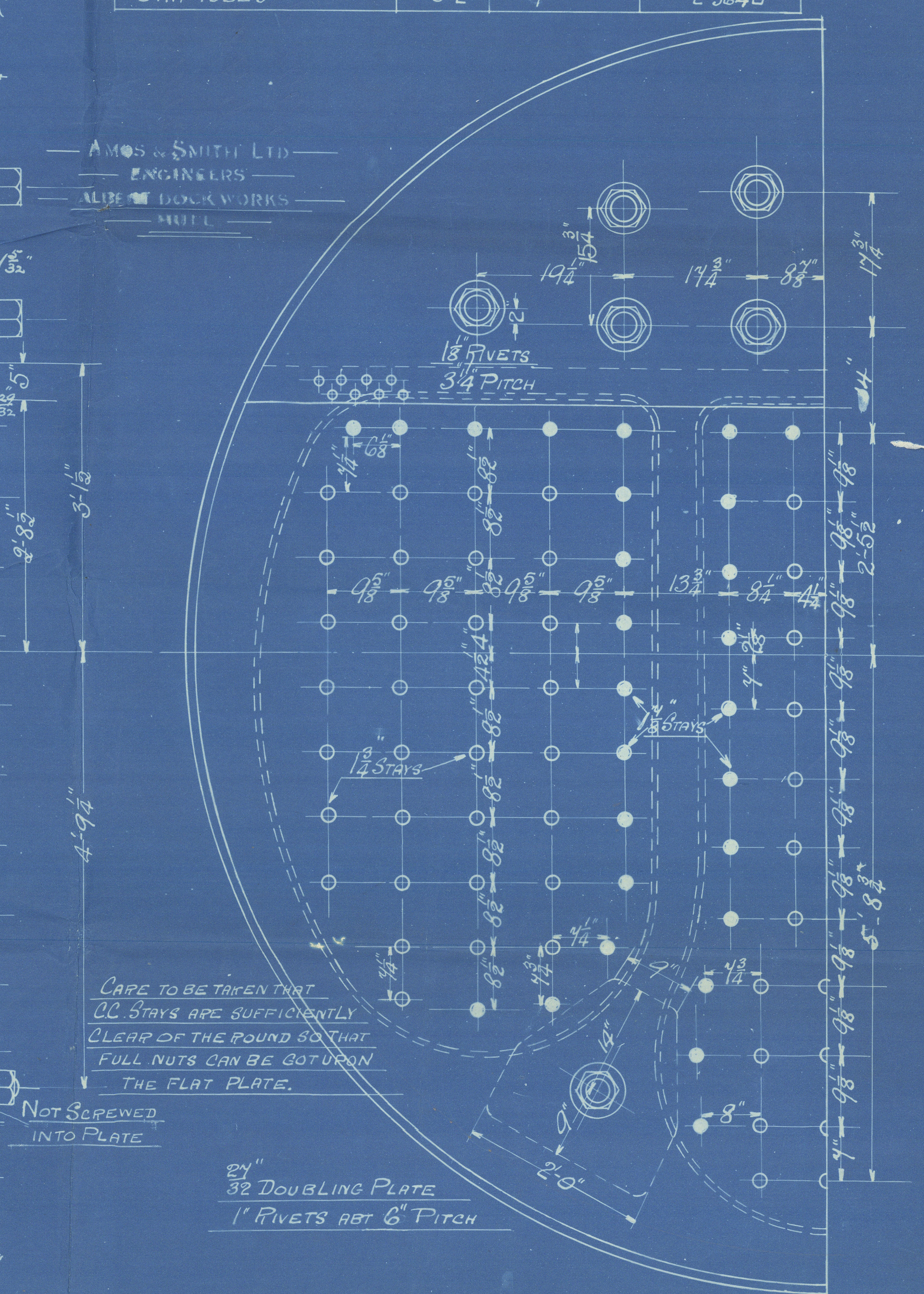
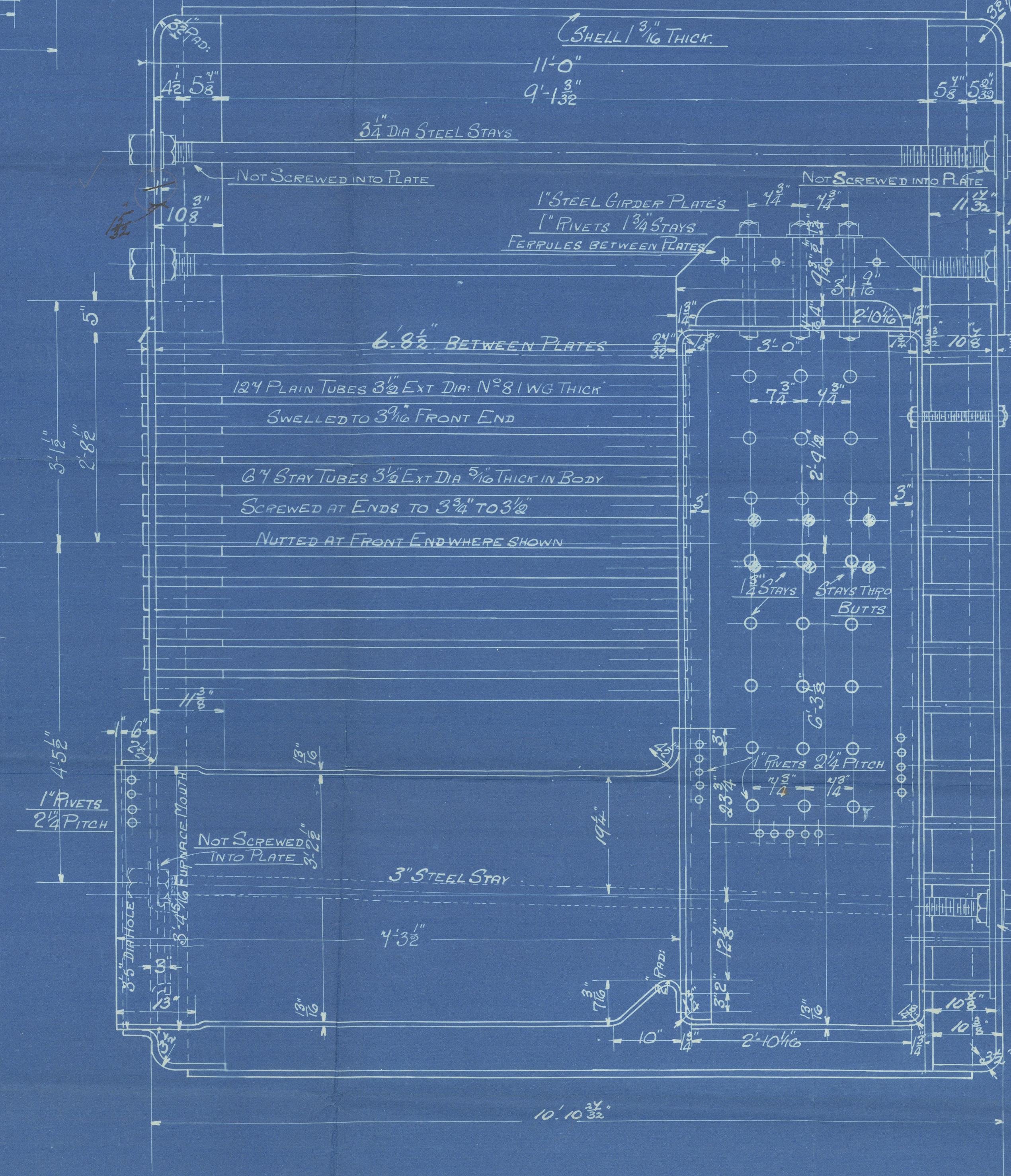
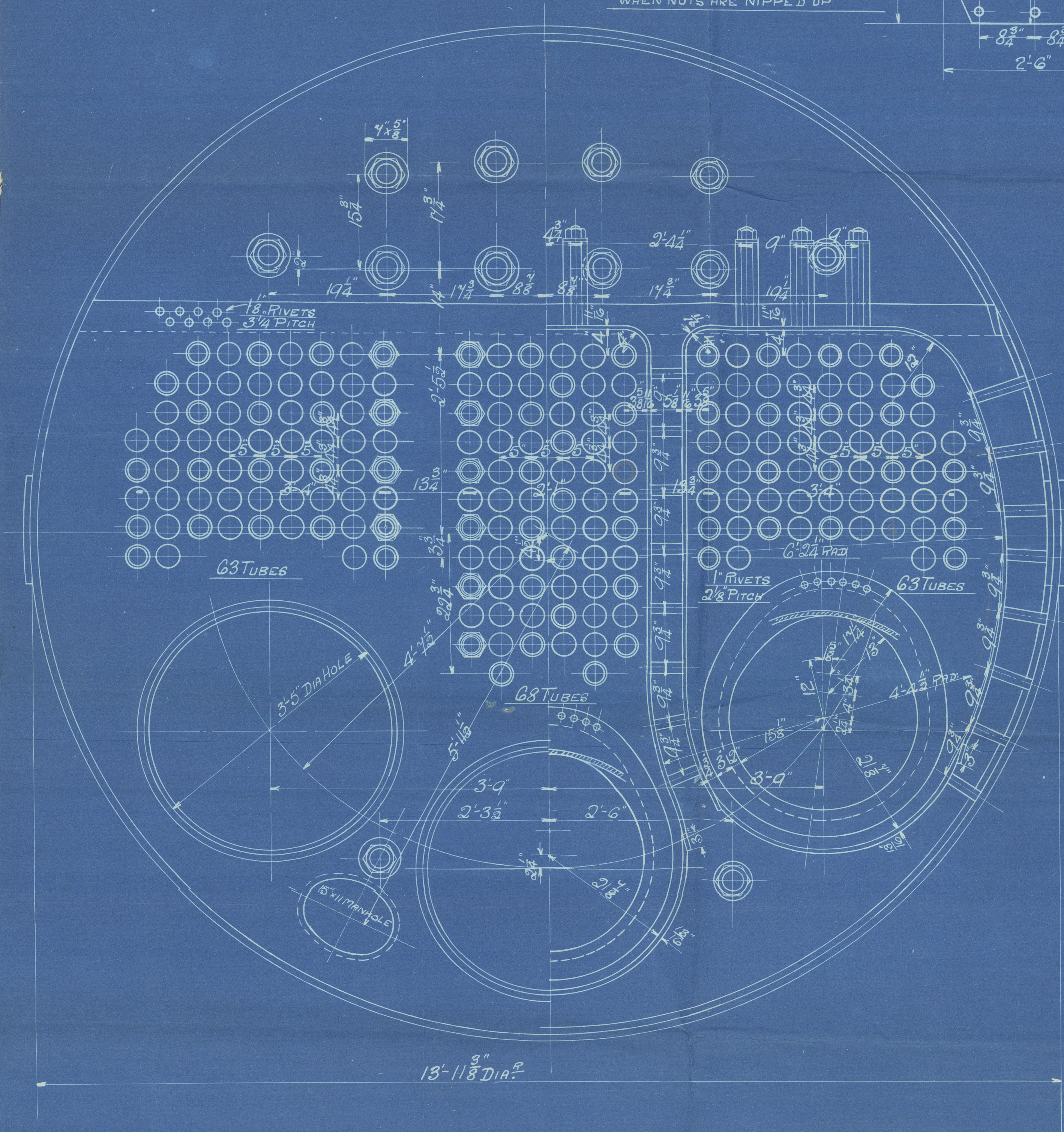


NOTE: THE PLATES, RIVETS, AND STAYS OF STEEL BY THE SIEMENS MARTIN PROCESS
 ALL RIVET HOLES DRILLED THROUGHOUT THE BOILER, THOSE IN SHELL AFTER THE PLATES
 ARE BENT.
 ALL FLANGED PLATES TO BE ANNEALED AFTER THE PLATES ARE BENT.
 STAYS ARE NOT TO BE WELDED TUBES ARE OF IRON.
 THE TENSILE STRENGTH OF THE SHELL PLATES AND BUTT STRAPS TO BE BETWEEN
 29 AND 33 TONS PER SQ IN.
 THE COMBUSTION CHAMBER STAYS ARE SCREWED INTO BOTH PLATES AND FITTED
 WITH A NUT AT EACH END EXCEPT ON OUTSIDE OF CIRCULAR SHELL.

PARTICULARS OF STAYS

STAYS	DIA	THREADS PER INCH	EFF. AREA AT BOT OF THREAD
STEAM SPACE STAYS	3 1/4"	6	7.24 sq in
BOTTOM STAYS	3"	6	6.10 sq in
C.C. STAYS	1 7/8"	10	2.39 sq in
" "	1 3/4"	10	2.06 sq in
STAY TUBES	3 1/2"	9	2.36 sq in

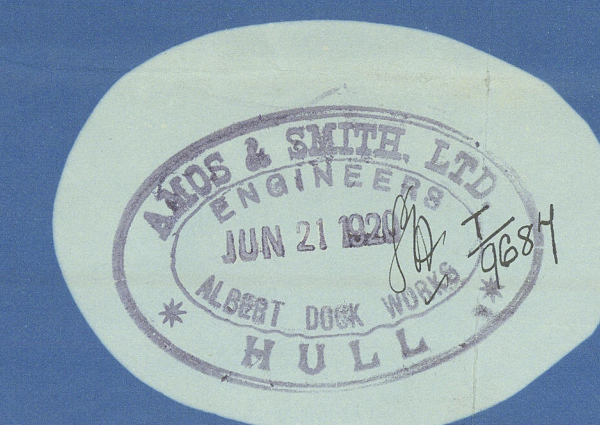
AMOS & SMITH LTD
 ENGINEERS
 ALBERT DOCKWORKS
 HULL



CARE TO BE TAKEN THAT
 C.C. STAYS ARE SUFFICIENTLY
 CLEAR OF THE POUND SO THAT
 FULL NUTS CAN BE OBTAINED
 THE FLAT PLATE.

NOT SCREWED INTO PLATE

2 1/2" 32 DOUBLING PLATE
 1" RIVETS 8" PITCH



STEEL BOILER NO 3249

TITLE BOILER
 FOR WHOM J.L. RICHARDSON.
 DATE 18-2-20
 ORDER 3249
 IF MADE IN U.S.A.
 SCALE 1" = 1 FOOT

10614

A.S. 85 — 2000 — 9/19 — E.W.

From AMOS & SMITH, Ltd., HULL.

ENCLOSURE FOR

Lloyds Surveyors
Hull.

W 8000-515M

AMOS & SMITHS
alters to No. 3458.

No ~~3249~~

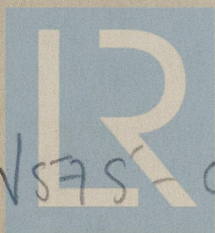
WP 200⁷⁶⁵⁰

COCHRANE'S No 705

$\frac{5}{8}$ Gallon

Hull Rpt 34047.

REPAIR



© 2020

WS75-0078

Lloyd's Register
Foundation