

26/11/19

# HORIZONTAL DONKEY BOILER

To Lloyds Requirements for a working Pressure of 120 Lbs per sq

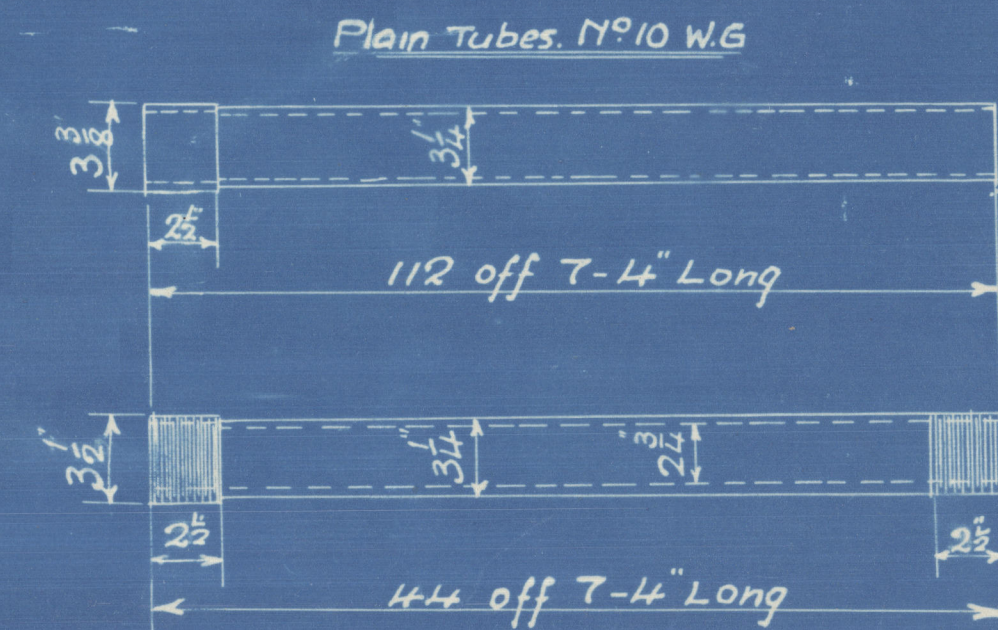
All Plates, Rivets, Stays & Girders of Steel Tubes of Wrought Iron

Scale 1" = 1 Foot

JOHN DICKINSON & SONS, LTD  
ENGINEERS  
FRADING NO 5598  
DATE 18.11.19  
BUNDERLAND

Heating Surface = 1172 sq ft

STAYS					
Dia	Thru	Eff	Eff	Tip	
1 1/2	9	1.36	14.5	70	
1 3/8	9	1.48	17.5	84	
2	6	1.788	2.5	12	



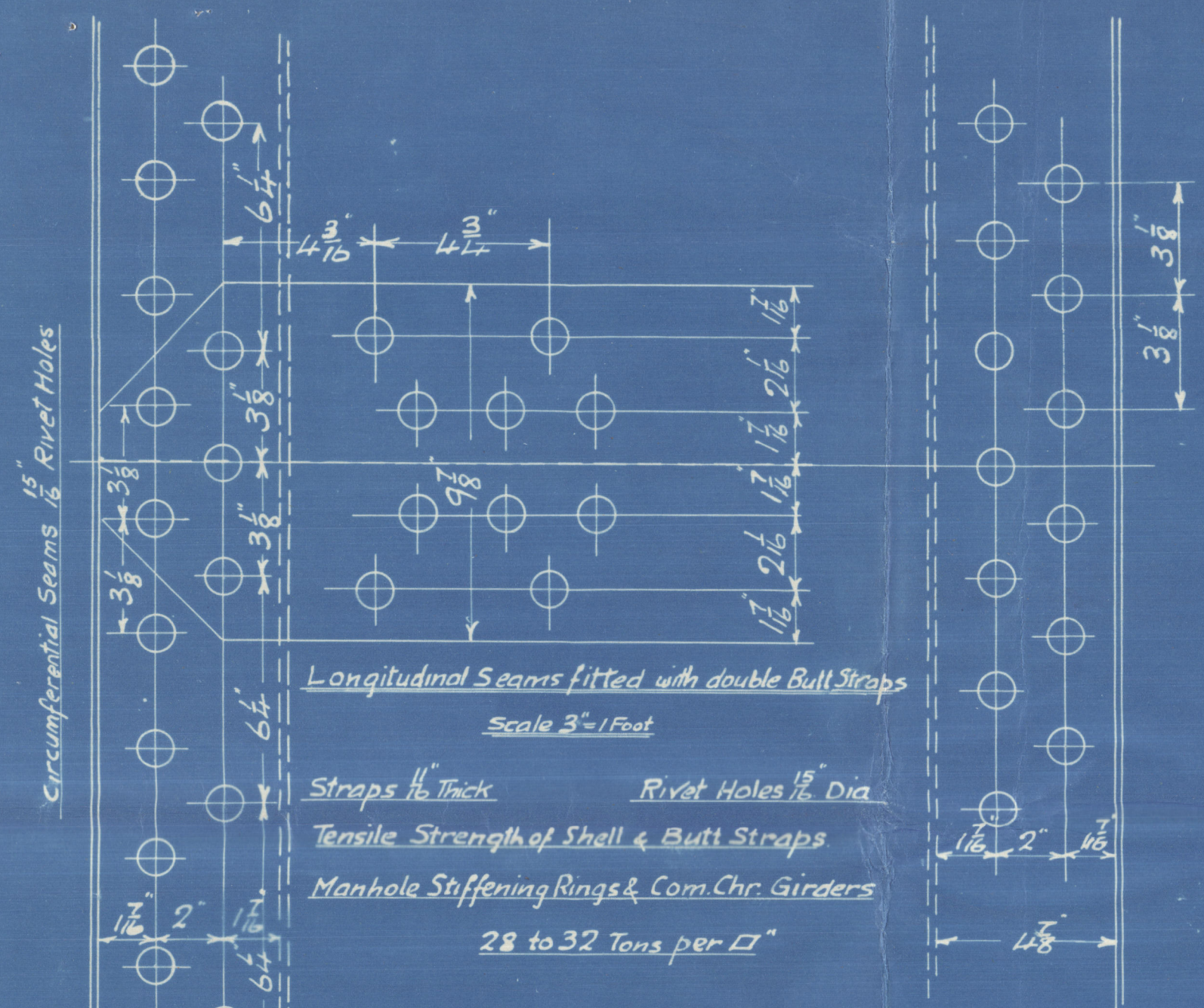
Stay Tubes 1/2" Thick Screwed 9 Threads per inch. Eff Area 16456 sq in

## RIVETING

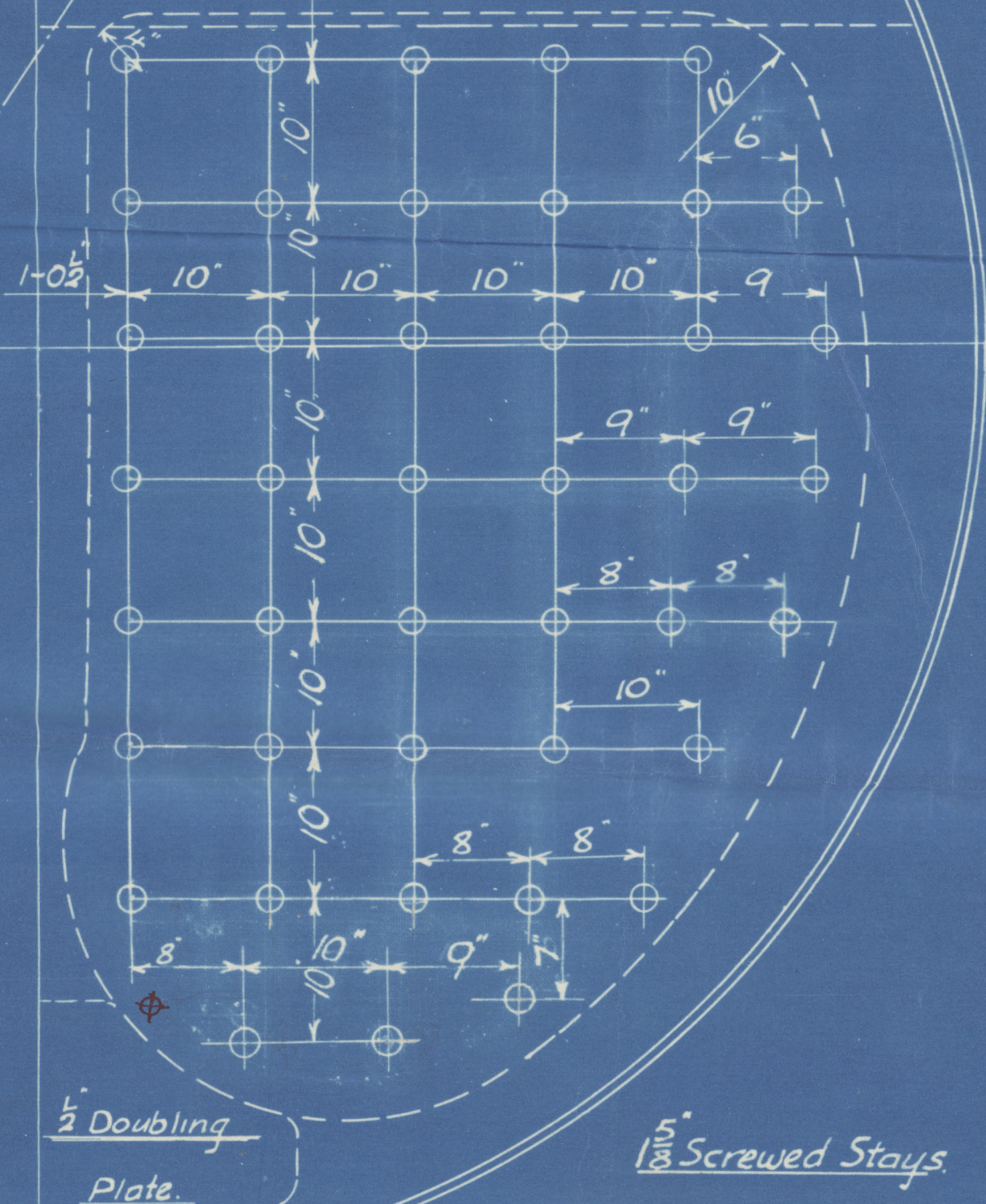
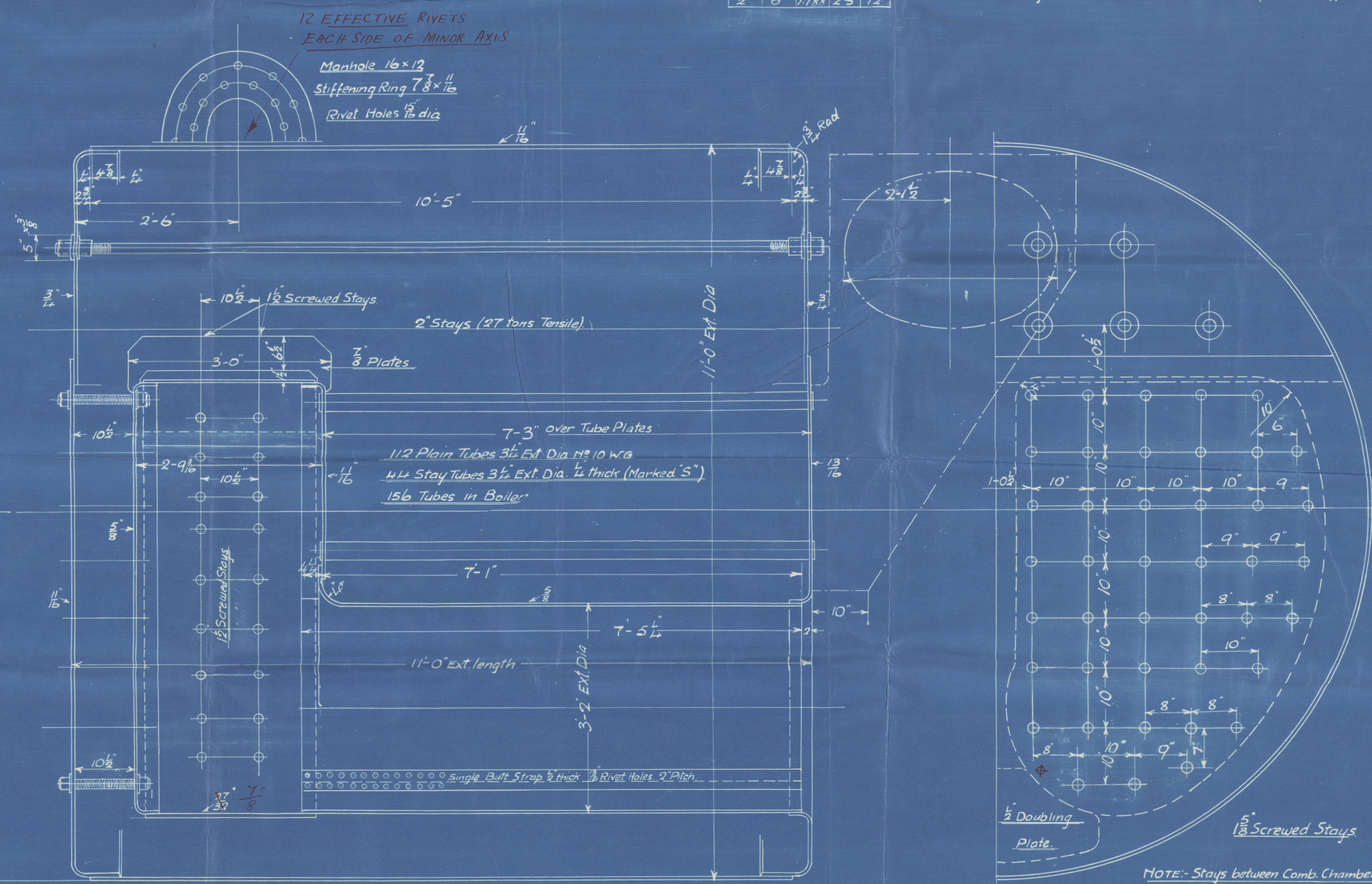
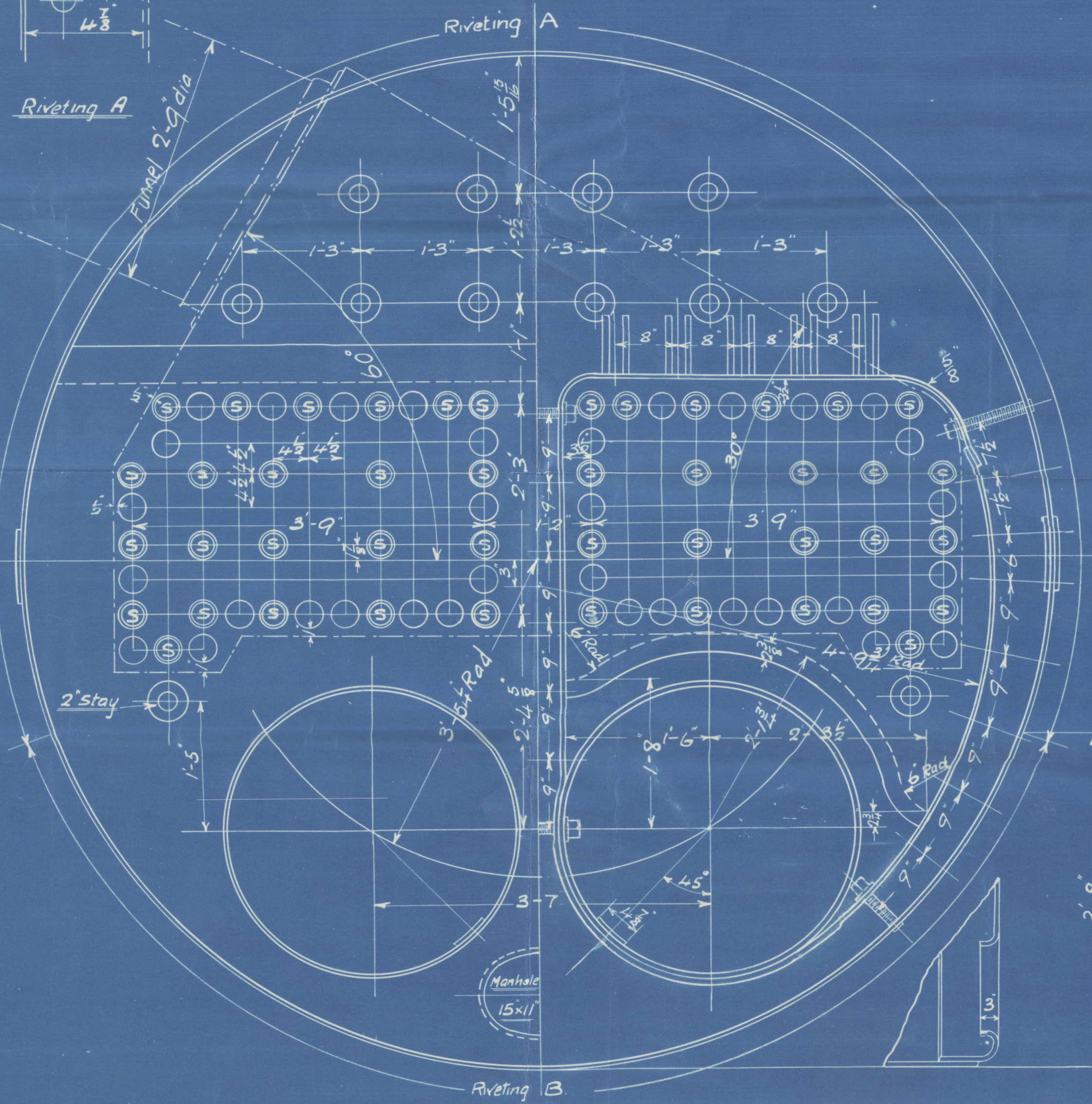
Front & Back Seams double riveted 15" Rivet Holes 3 1/4" Pitch 1 1/2" Lap

Combustion Chambers (Circumferential & Longitudinal Seams) & Furnaces

Single Riveted 8" Rivet Holes 2" Pitch 2 3/8" Lap



Riveting B



NOTE: Stays between Comb Chambers and marginal stays in backs screwed thro both plates and nut fitted at each end

Stays from Comb Chb to shell and remainder of stays in backs to have nut on inner end only and to project 5/8" and to be caulked

Nº1064	ENG 831	Intended for Messrs Bartram & Sons 253	Nov 17 <sup>th</sup> 19
Nº1065	ENG 851	Intended for Messrs Bartram & Sons 254	Nov 17 <sup>th</sup> 19

25/11/19 J.P.R.

22-11-19



SUNDERLAND

J. DICKINSON & SONS L<sup>d</sup>

~~1755~~  
DONKEY BOILER N<sup>o</sup> 1065

WP = 120 LBS 0"

~~BARTRAM & SONS L<sup>d</sup>~~

~~S/N<sup>o</sup> 264~~

(sold)

RETAIN

No. 3693
LLOYD'S TEST
240 lbs.
WP = 120 LBS
1-6-20 L.C.W.

<sup>4</sup>  
Graciana

SUNDERLAND RPT. NO. 27879

W582-0369

© 2021

Lloyd's Register  
Foundation