

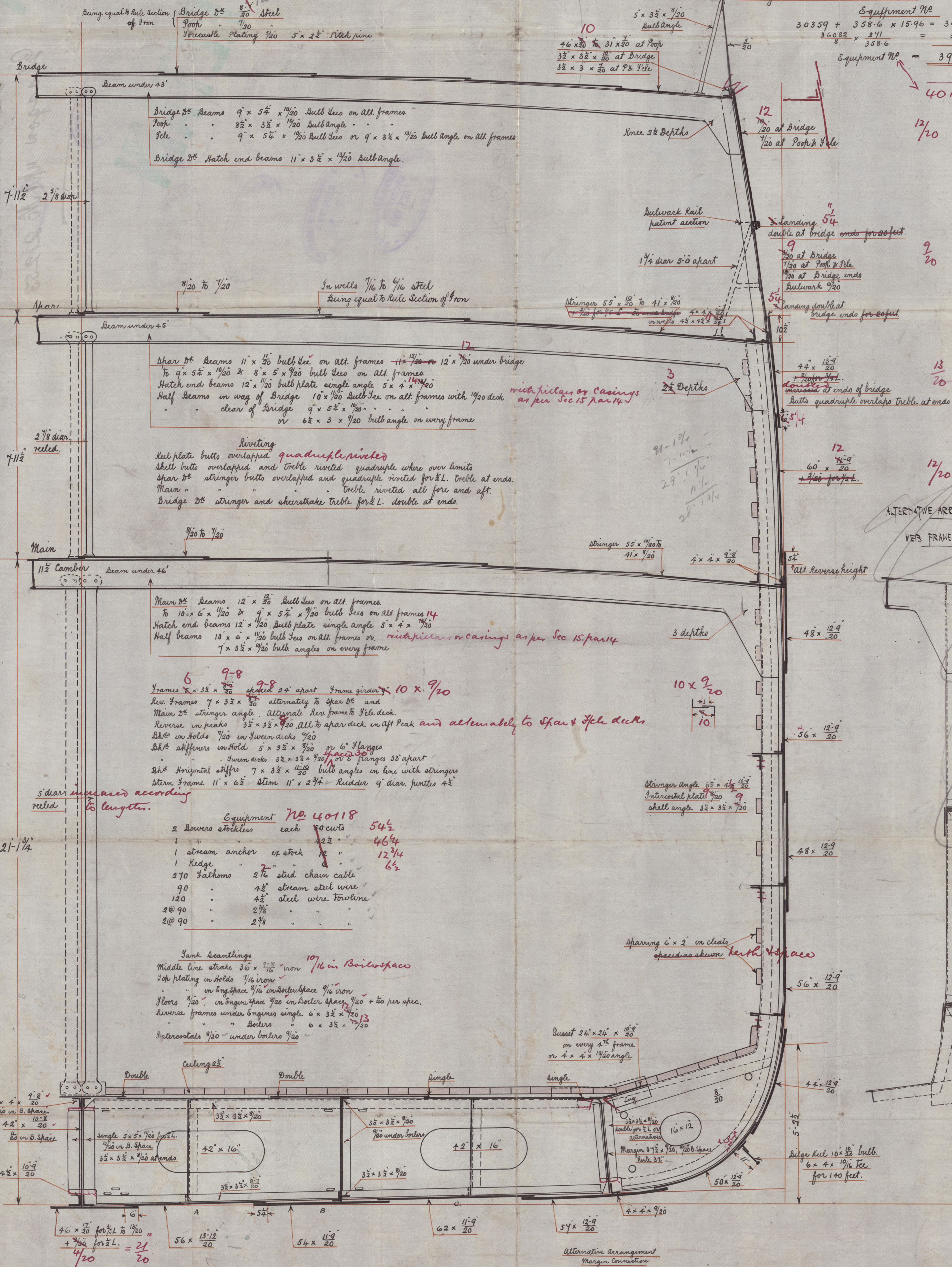
No 280. SS

Midship Section

Scale 1/2" = One Foot

1/2 Class 100A1 Lloyds Spar deck Rule

23- 1.03  
29- 1.03  
2- 2.03  
9- 2.03  
12- 2.03  
31- 2.03  
35- 2.03  
37- 2.03  
9- 3.03  
36- 3.03



Numeral  
1/2 Breadth = 23.00  
1/2 Girth = 40.52  
Depth = 21.14  
84.66 = Framing No  
358.6  
30359.07 = Plating No

Proportions  
Breadth to Length = 7.79  
Depth to Length Spar = 12.31  
Plating No 3 1/2 Rule 33572.

Equipment No  
30359 + 358.6 x 15.96 = 34082  
34082 x 241 = 3408

Equipment No  
39490  
628 = 50 ft. erections at end of Bridge

ALTERNATIVE ARRANGEMENT WEB FRAME SYSTEM.  
WEB FRAMES 4 SPACES APART IN ENGINE ROOM SPACE  
HOLDS

FRAMES 5 1/2 x 3 1/2 x 1/20  
RIVETS 4 x 3 1/2 x 1/20  
all to span deck in way of erections

9-8  
Web frames 18 x 12-11  
Face angle 6 1/2 x 1/20  
9-8  
Sole stringer 18 x 12-11  
Face angle 6 1/2 x 1/20  
The back and chocks  
3 1/2 x 3 1/2 x 1/20  
9-8  
Half diamond plates  
42 x 11 x 1/20  
Rivets 16 rivets  
flanged to stringer  
Web to stringer connections  
3 1/2 x 3 1/2 x 1/20  
9-8

Shell Plating is reduced to in way of double bottom  
Midship thickness strakes B & C carried forward to collision bulk  
frames in tank doubled from 1/2 L. for collision bulk  
additional intercostals as per rule

Alternative arrangement  
Margin Connection  
Margin plate  
5 x 3 1/2 x 1/20  
5 1/2 Margin  
14 rivets 1/2 dia with panheads and  
fine knotted points.



Midship Section  
 C. Connell & Co. No.  
 280 S/S Sierra Morena  
 Sierra Morena  
 Glasgow upr No 21253

— 082 0/0 —  
 — inside of hull —  
 — inside of hull —

which have been supplied 1 Accommodation



© 2021

Lloyd's Register  
 Foundation

W582-0374

Handwritten notes and stamps on the right side of the page. The notes include '280 S/S', 'Sierra Morena', and 'Glasgow upr No 21253'. There are several circular blue stamps, some of which are partially legible and appear to be from 'LLOYD'S REGISTER OF SHIP PLACES'. A date stamp '27 OCT 1903' is visible. The page is heavily stained and discolored, with a large green 'X' mark across the center.