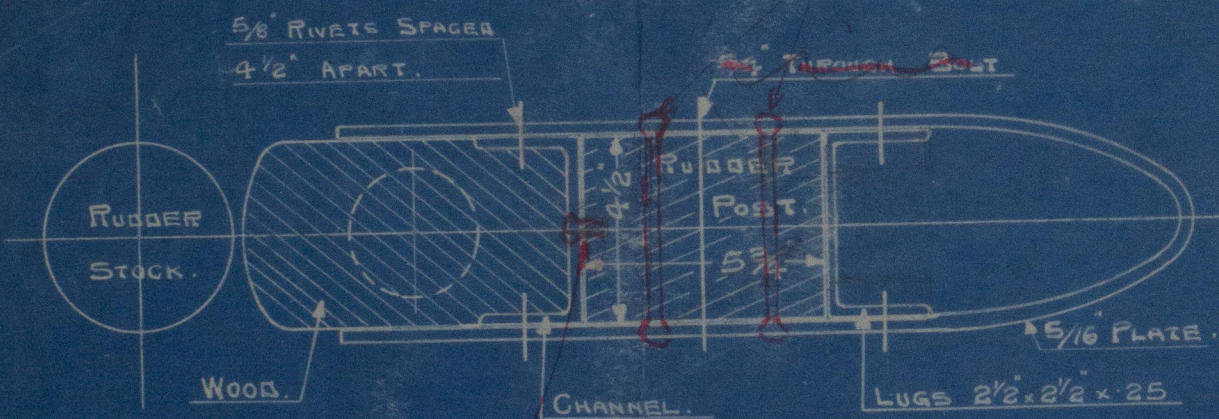
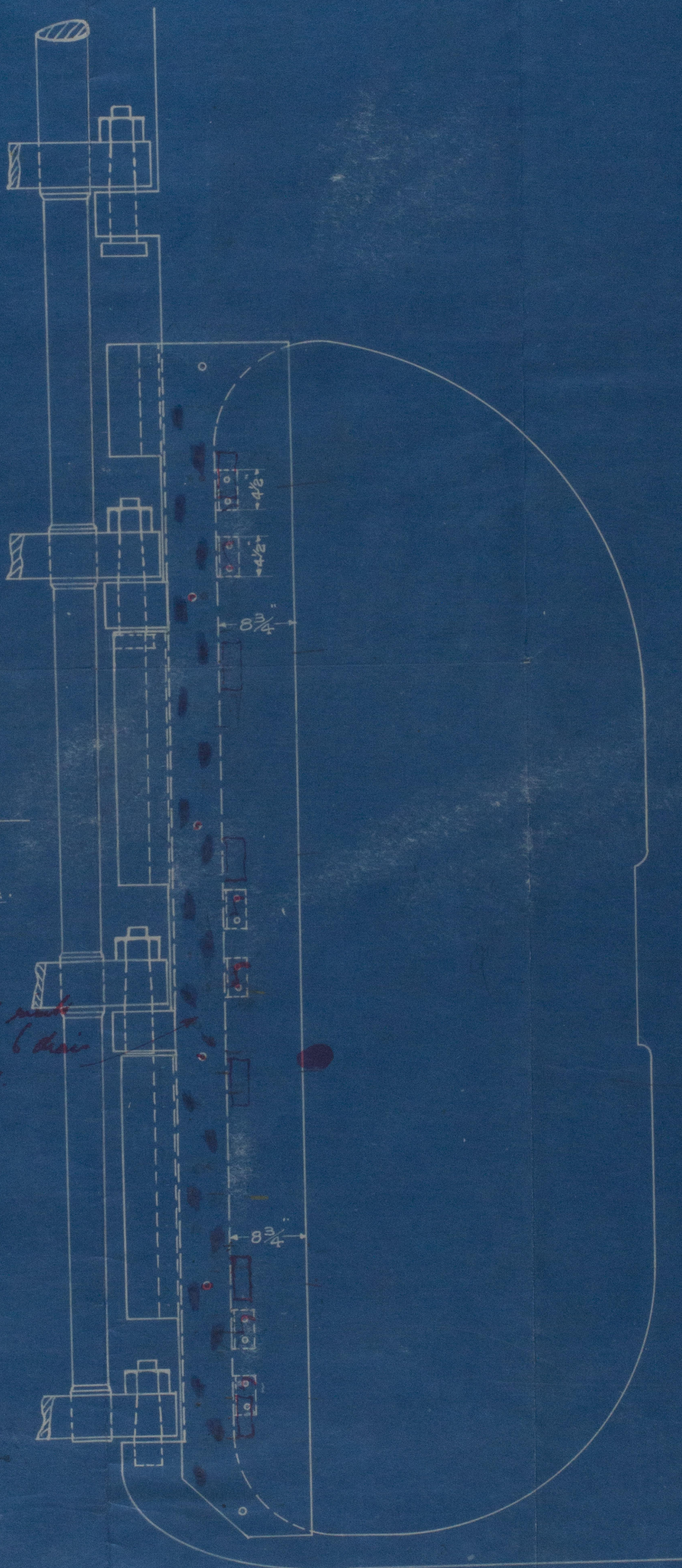
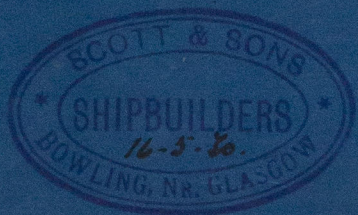


# —S. S. "MICKLETON"—

## STREAMLINE PLATES.

SCALE 1" = 3" = ONE FOOT.



*Keel life spread  
about 9 inches apart*

*Two rows of rivets  
in first spread 6 inches  
apart on hull*

APPROVED  
LLOYDS REGISTER OF SHIPPING  
*R/L Ward for R. A. Mann*  
DATE *20/5/20*



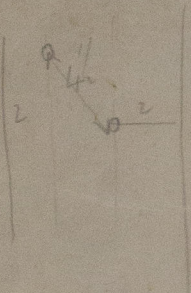
0164 Register  
Foundation



Scott & Sons  
"Mickleton"  
Stream line plates.

GLASGOW REPORT No 50529

W59-0164



© 2021

Lloyd's Register  
Foundation