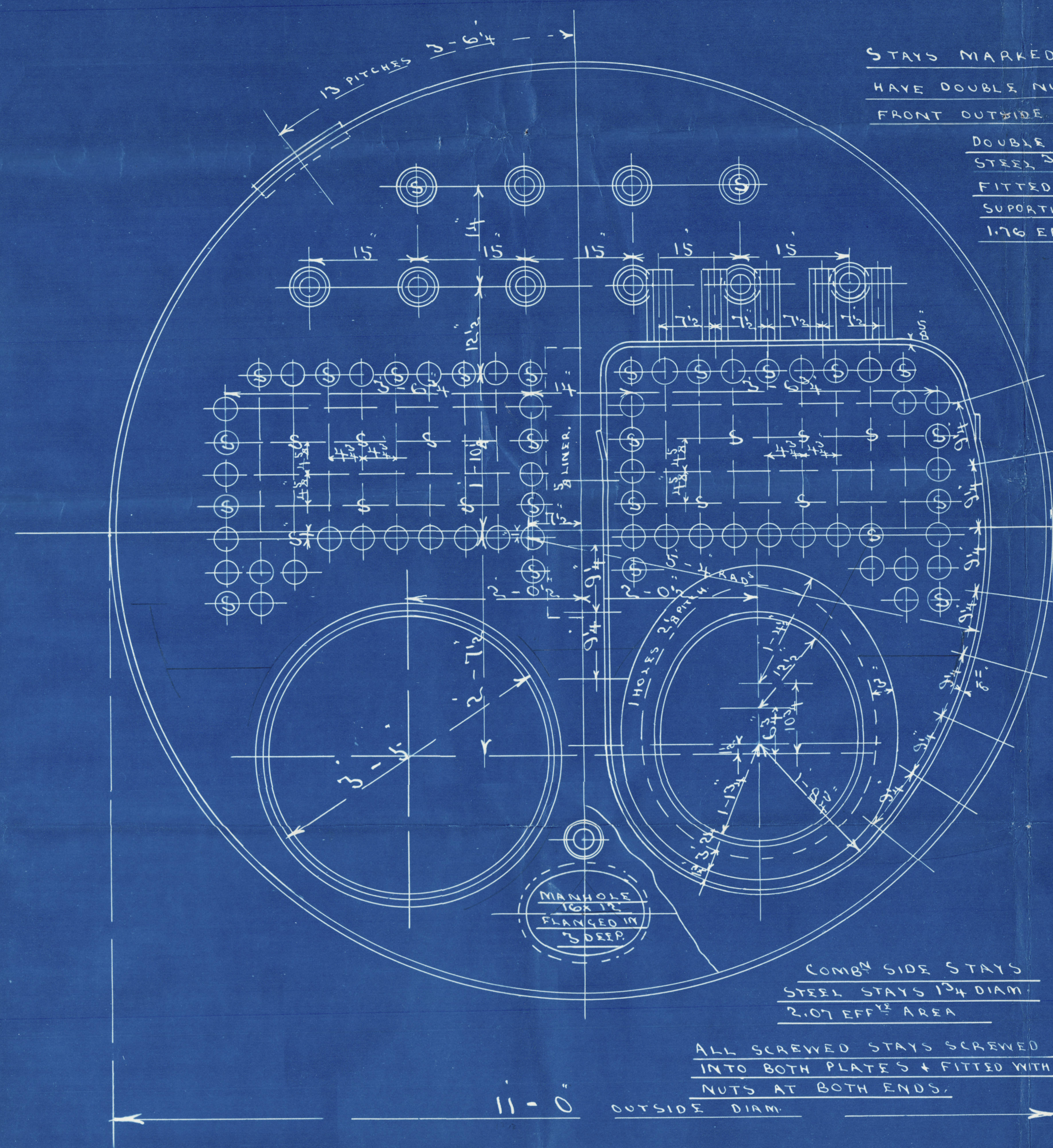


22/3/20

1 BOILER	2 BOILERS
LENGTH OF FIRE BARS	5-0
AREA OF FIRE GRATE	32.4
DIAM OF TUBES OUTSIDE	3.2
LENGTH OF TUBE COVER PLATE	6-9
NO OF TUBE	150
SURFACE OF TUBES	784.4
TOTAL HEATING SURFACE	915.4
WORKING PRESSURE	180
DIAM OF SAFETY VALVE	

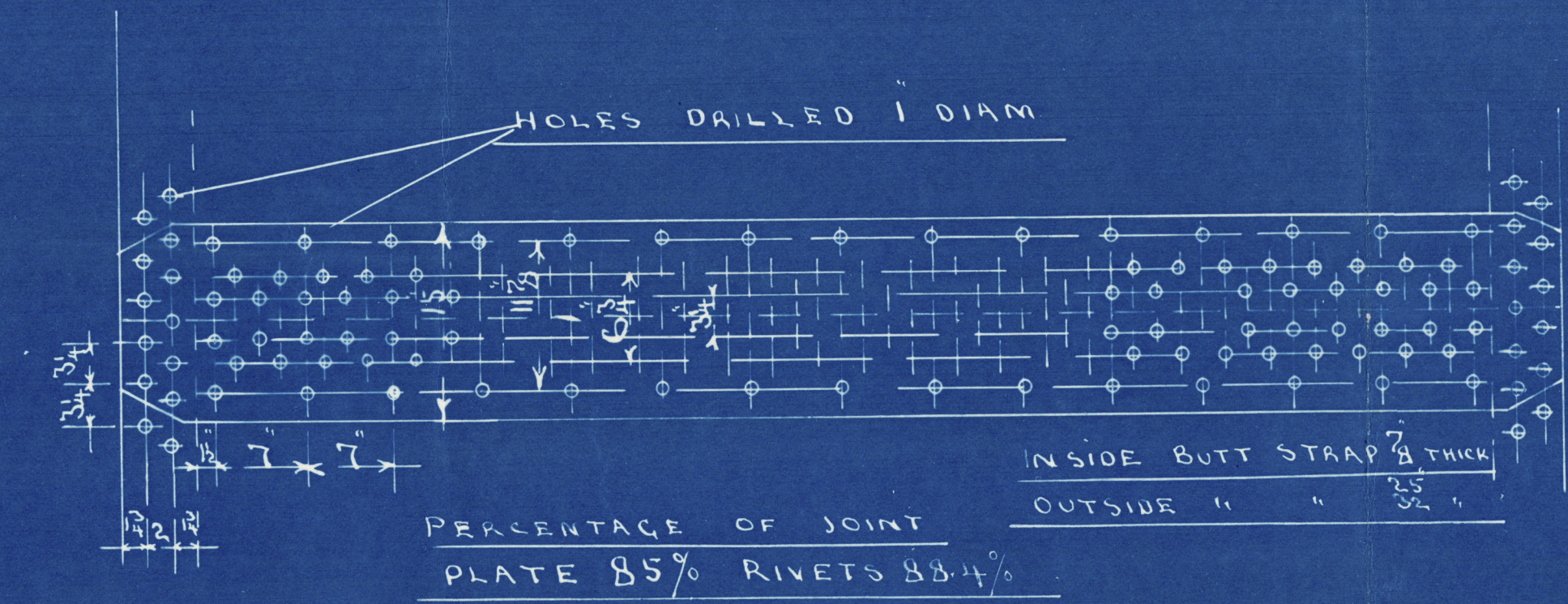
MANHOLE IN SHELL 16 X 12  
LINED INSIDE WITH 1/8" PLATE 1" WIDE



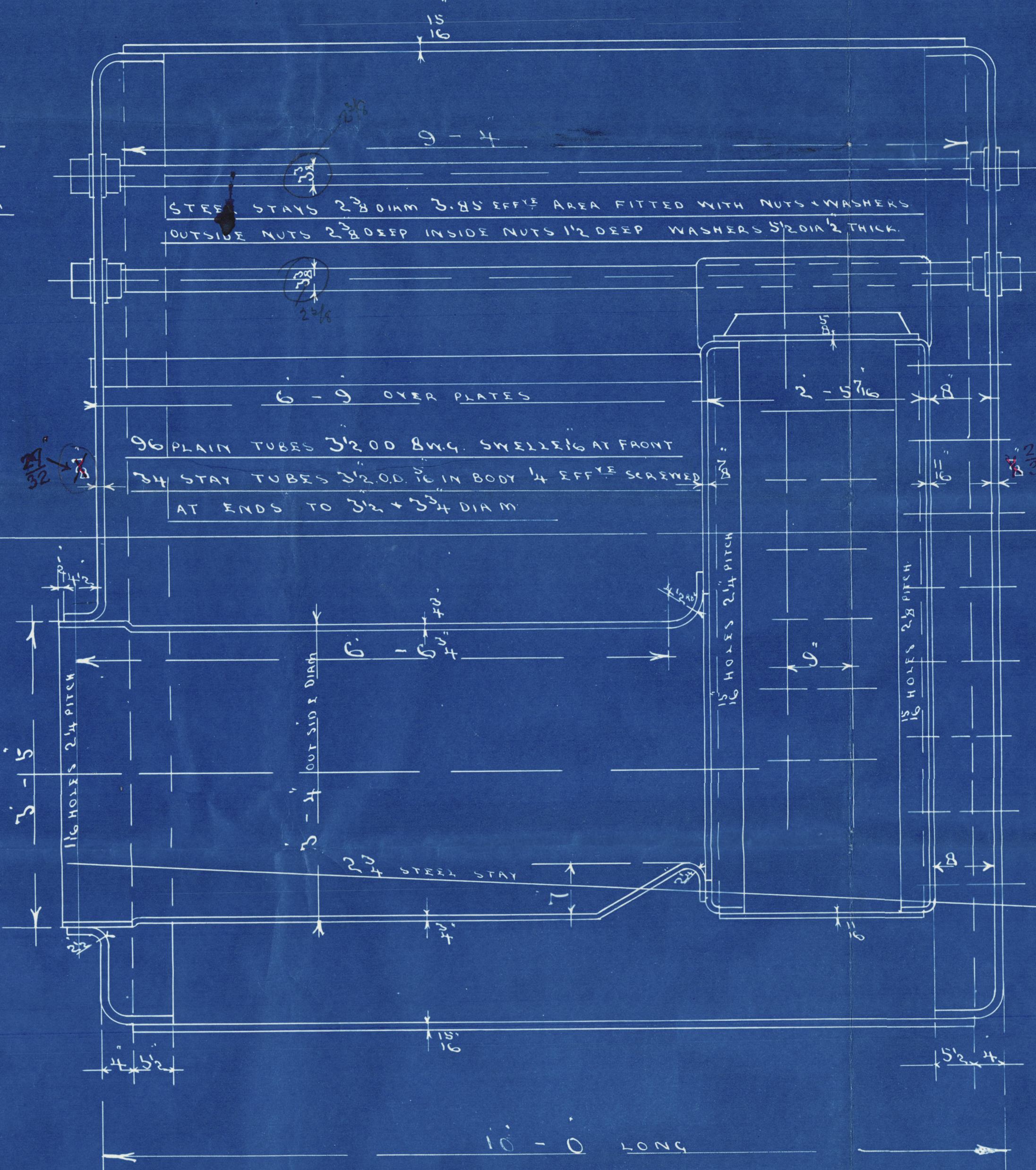
STAYS MARKED S TO  
HAVE DOUBLE NUTS AT  
FRONT OUTSIDE  
DOUBLE GIDER STAYS OF  
STEEL 3/4\"/>

COMB SIDE STAYS  
STEEL STAYS 1 3/4\"/>

ALL SCREWED STAYS SCREWED  
INTO BOTH PLATES & FITTED WITH  
NUTS AT BOTH ENDS.

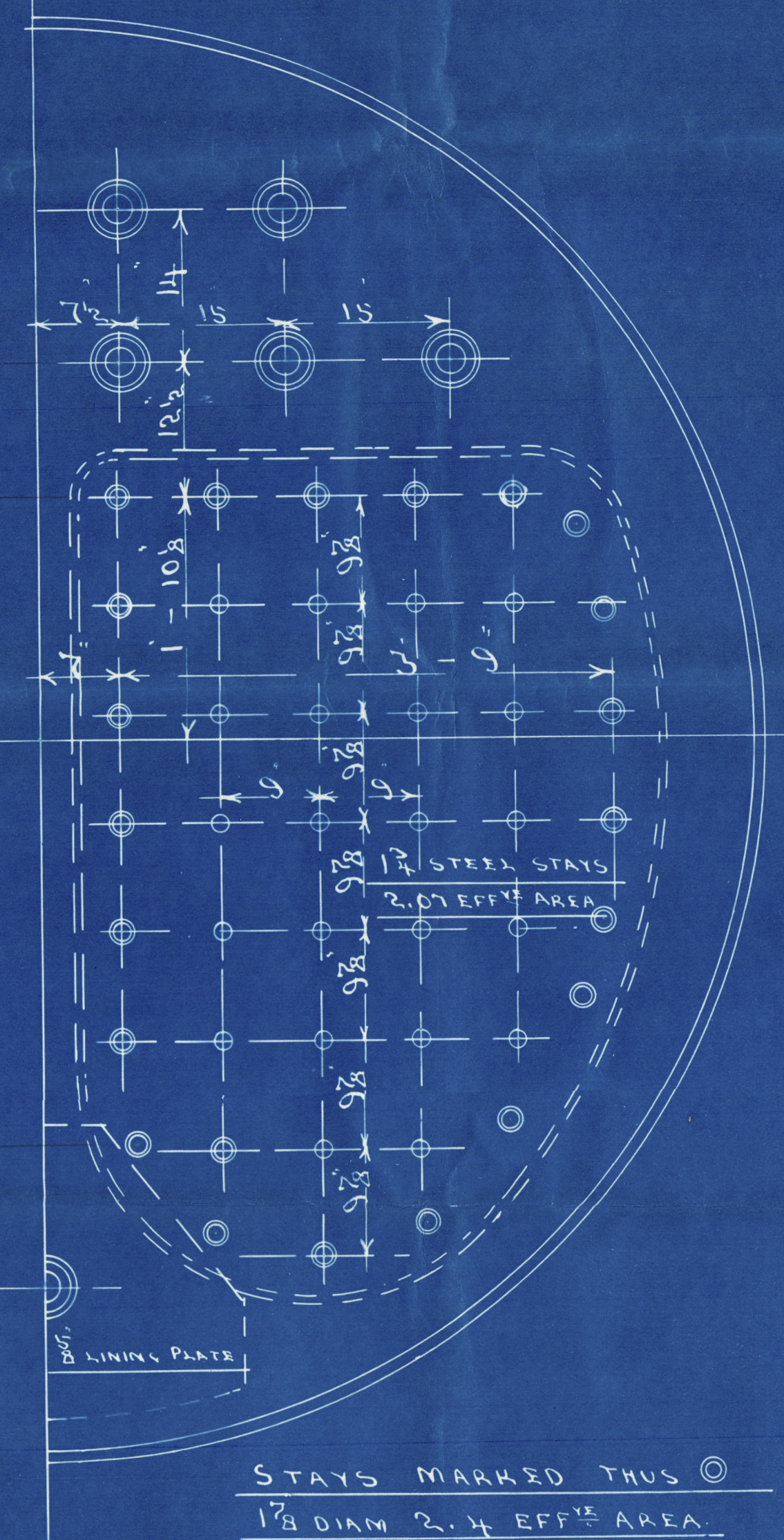


PERCENTAGE OF JOINT  
PLATE 85% RIVETS 83.4%



STEEL STAYS 2 3/4\"/>

96 PLAIN TUBES 3/2.00 B.W.G. SHELL 16 AT FRONT  
34 STAY TUBES 3/2.00 16 IN BODY 1/4 EFFIE SCREWED  
AT ENDS TO 3/2 + 3/4\"/>



STAYS MARKED THUS ©  
1 3/4\"/>

CHARLES D HOLMES & CO LTD  
ENGINEERS & BOILER MAKERS  
HULL 9-3-10.

10FF PORT BOILER  
10FF STBD BOILER

STEEL BOILERS N°1248

PLAN N°5206

DRAWER N°112  
DRAWING N°

19-3-20  
A.R.

19-3-20  
A.R.



**FOR ENCLOSURE TO**

*Messrs Lloyd's*

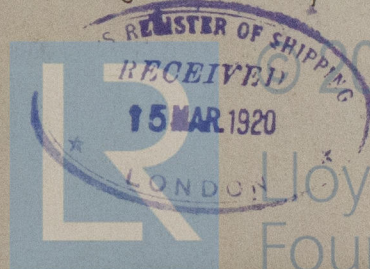
Lloyd's Register  
Foundation

**From CHARLES D. HOLMES & CO. Ltd.**  
**HULL.**

W 59-0165 1/2

C. D. Holmes.  
*Book written*  
Steel Blrs. N° 1248.  
W. P. 180 lb □.

S.S. "Thickleron"  
Hull report no 32839



Lloyd's Register  
Foundation

W59-0165