

SHIP NO 570. MIDSHIP SECTION.

LENGTH B.P. 306'-0"
BREADTH MLD 45'-9"
DEPTH MLD 21'-6"
CLASS 100 R. LLOYDS

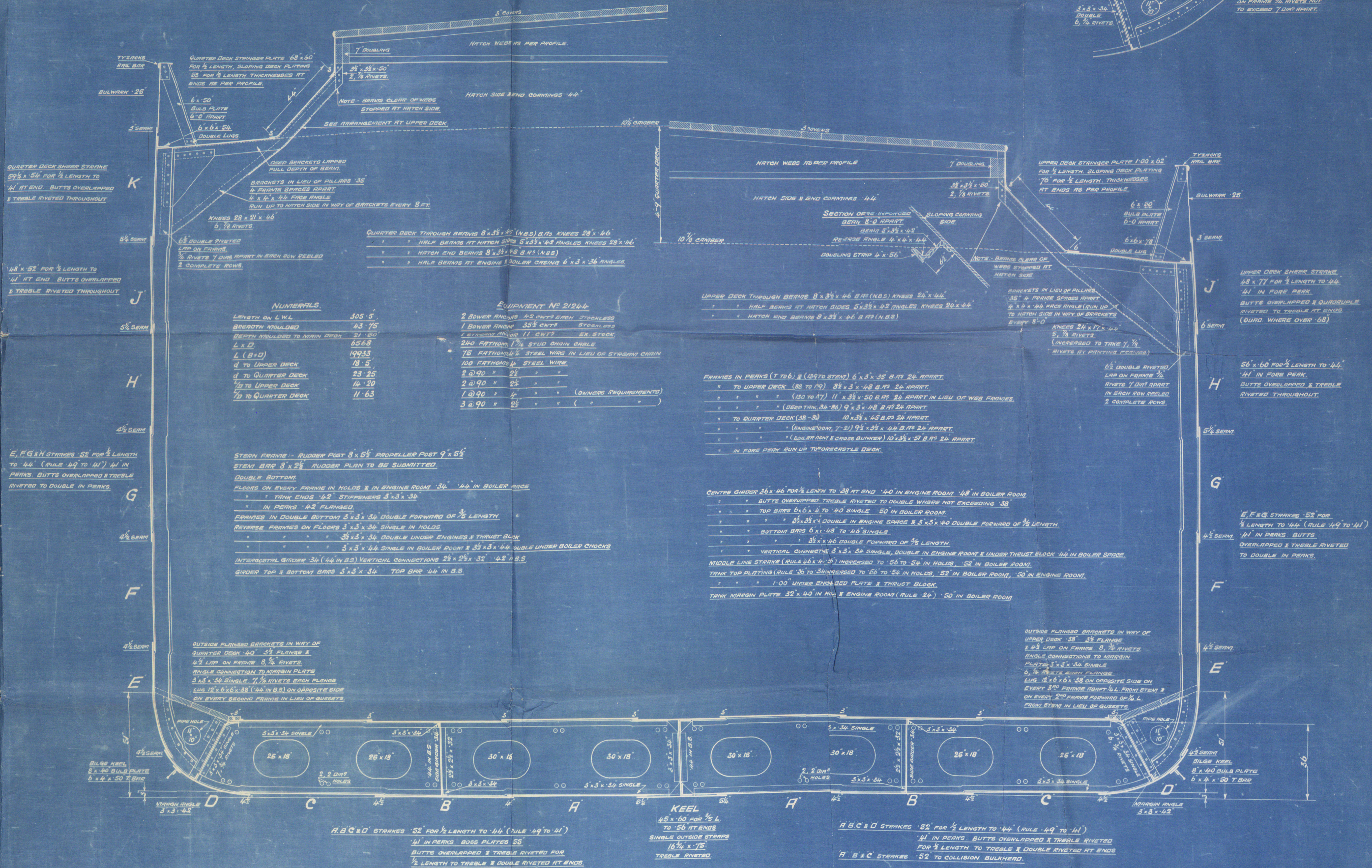
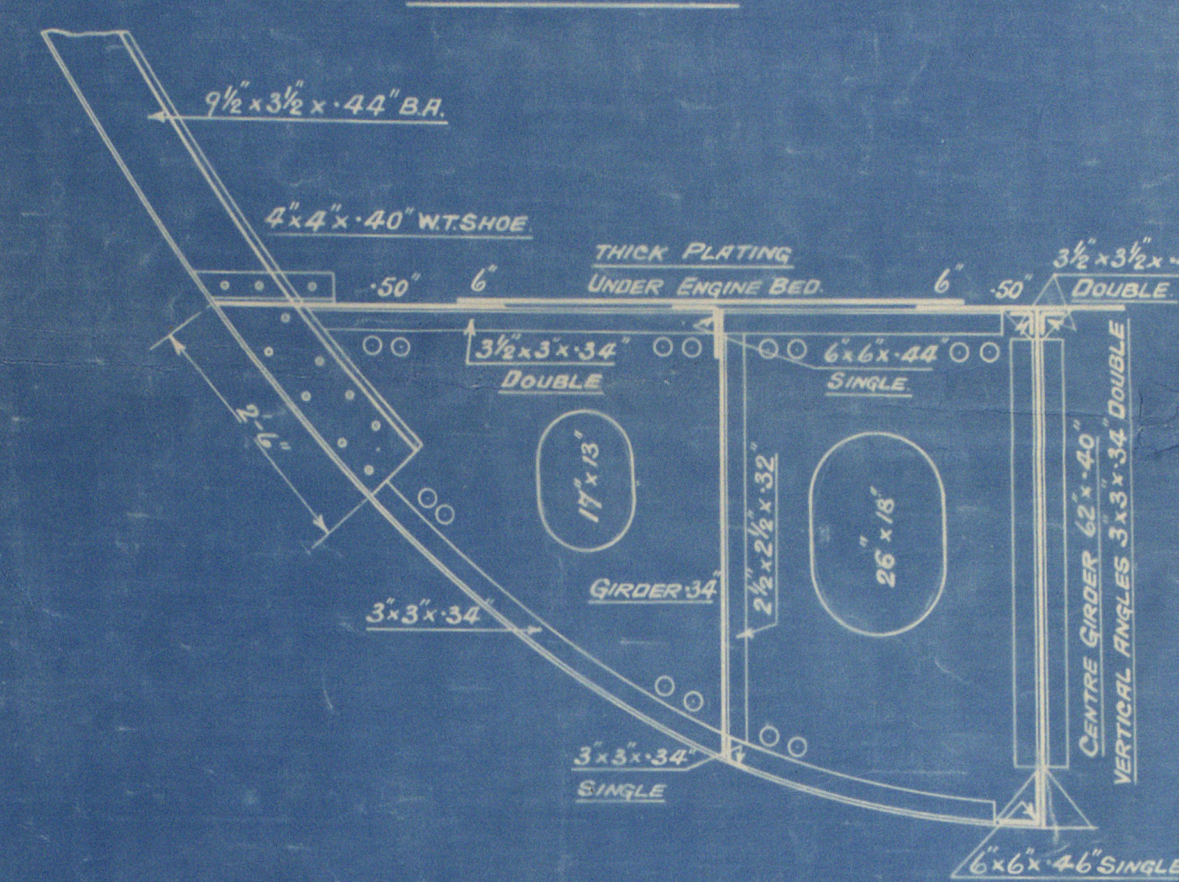
SCALE 1/2" = 1 FOOT.

EQUIPMENT NUMERALS.

L (B+D) 19933-00
R.D. DECK 176-46 x 475 = 839-15
FORECASTLE 33-5 x 725-3/4 = 182-15
CASING 54-0 x 7-0 x 1/2 = 189-00
SALOON HOUSE 16-25 x 7-25 x 1/2 = 58-90
OFFICERS HOUSE 11-5 x 7-25 x 1/2 = 41-69

EQUIPMENT NO 21244

SECTION THROUGH DOUBLE BOTTOM IN WAY OF ENGINE ROOM.



ENCLOSURE TO

Mr. Potts.

FROM R. & W. HAWTHORN, LESLIE & CO. LTD.,
HEBBURN-ON-TYNE.
W 593 - 0139

4769
20 JAN 1980
R. & W. HAWTHORN, LESLIE & CO. LTD.
HEBBURN-ON-TYNE

ENCLOSURE TO

MR. POTTS.

34/02742.

FROM R. & W. HAWTHORN, LESLIE & CO. LTD.,
HEBBURN-ON-TYNE.

W593-0139