

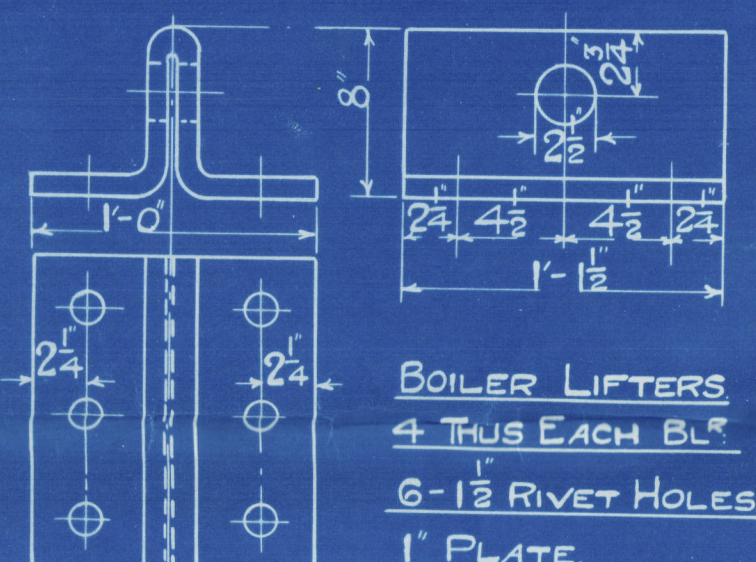
25-4-23

THE NORTH EASTERN MARINE ENGINEERING CO. LTD.

WALLSEND-ON-TYNE.

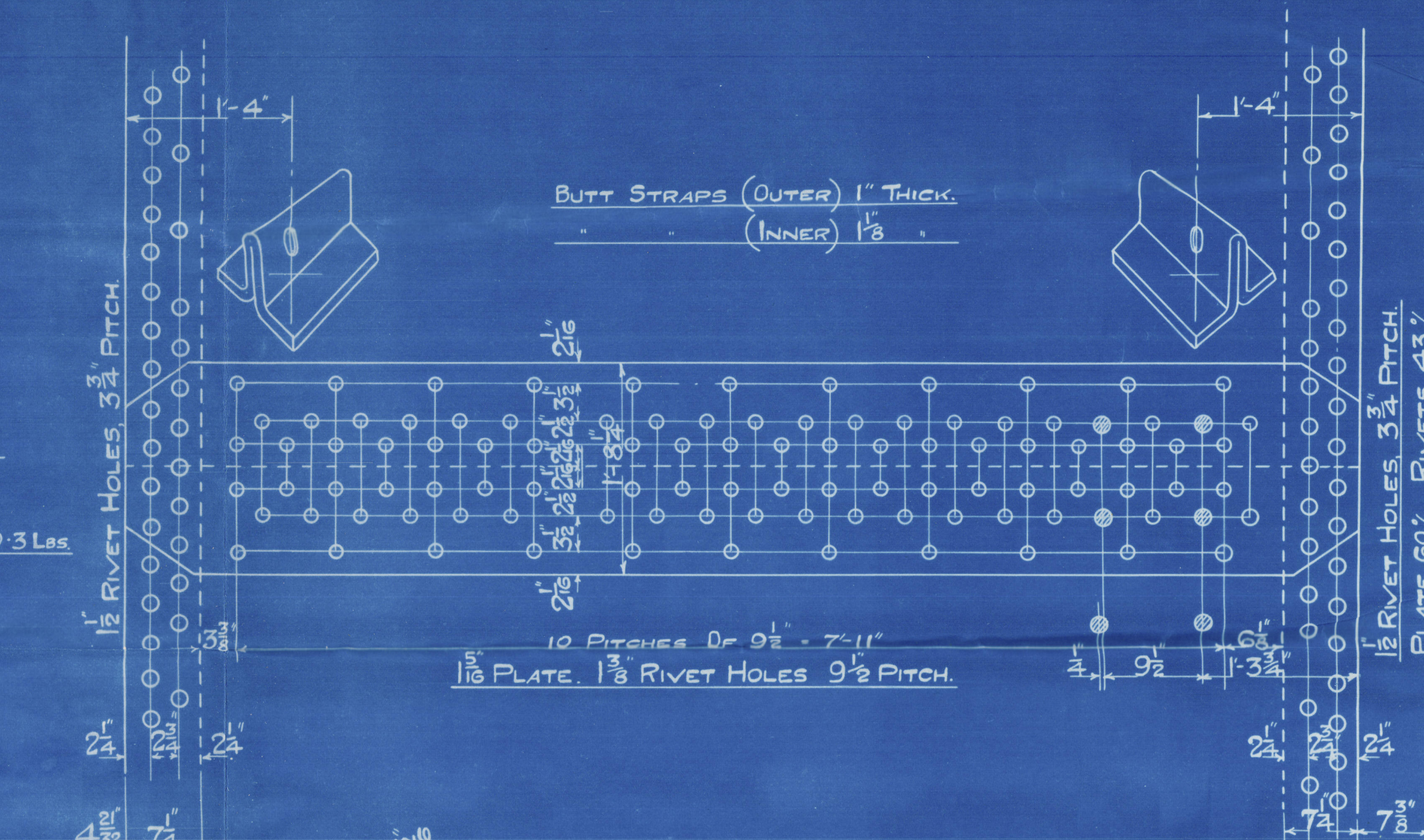
BOILER

SCALE:- 1 INCH = 1 FOOT.



STRENGTH OF PLATE = 85.52

RIVET = 89.4

SHELL 42-2 28 3/4 x 85.52 = 180.3 Lbs
2.75 x 198.375

TO LLOYDS REQUIREMENTS.

TUBE HEATING SURFACE 2361 sq

ELSEWHERE 570 sq

TOTAL 2931 sq PER BOILER.

WORKING PRESSURE 180 LBS.

TEST 320 "

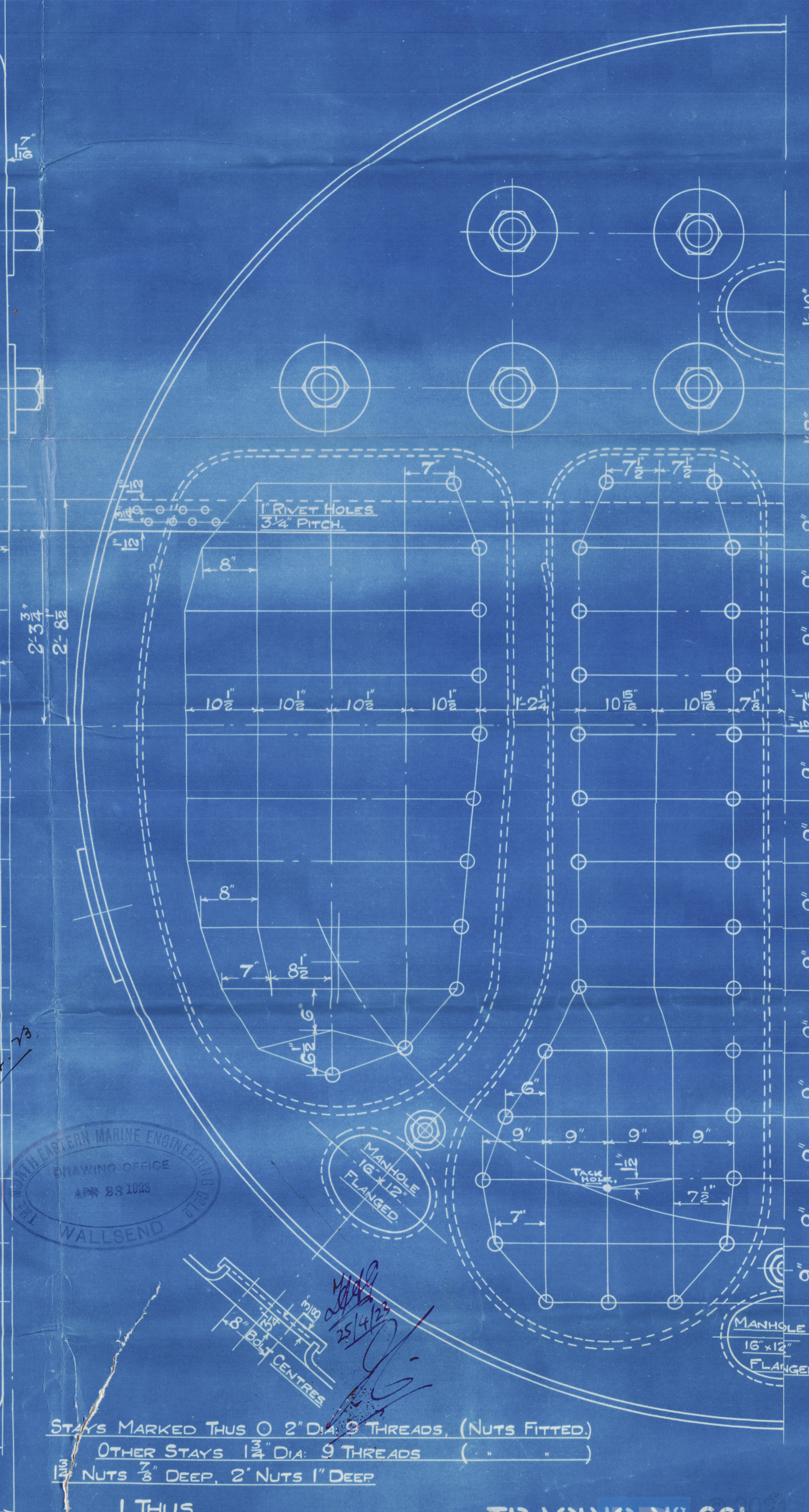
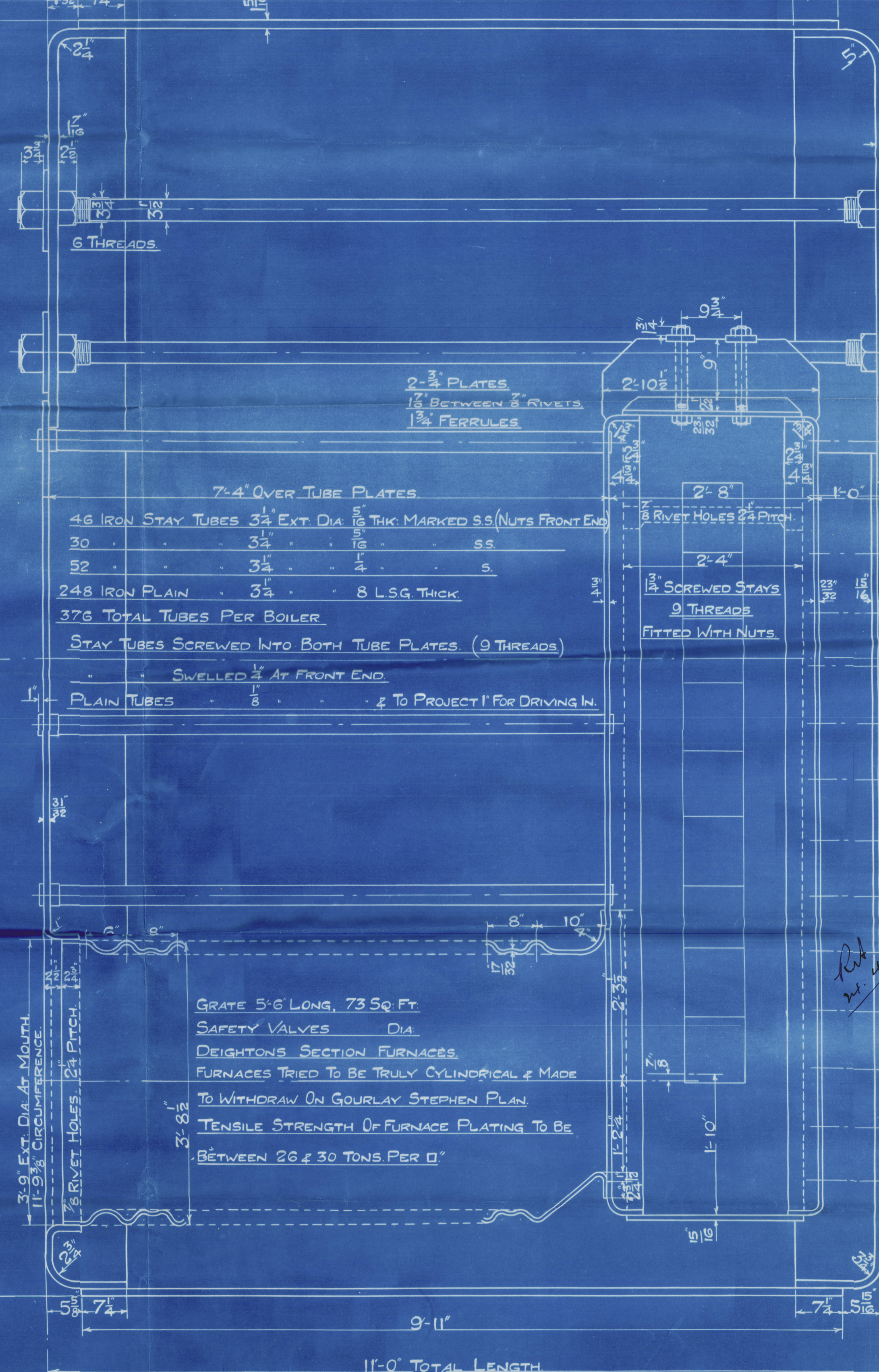
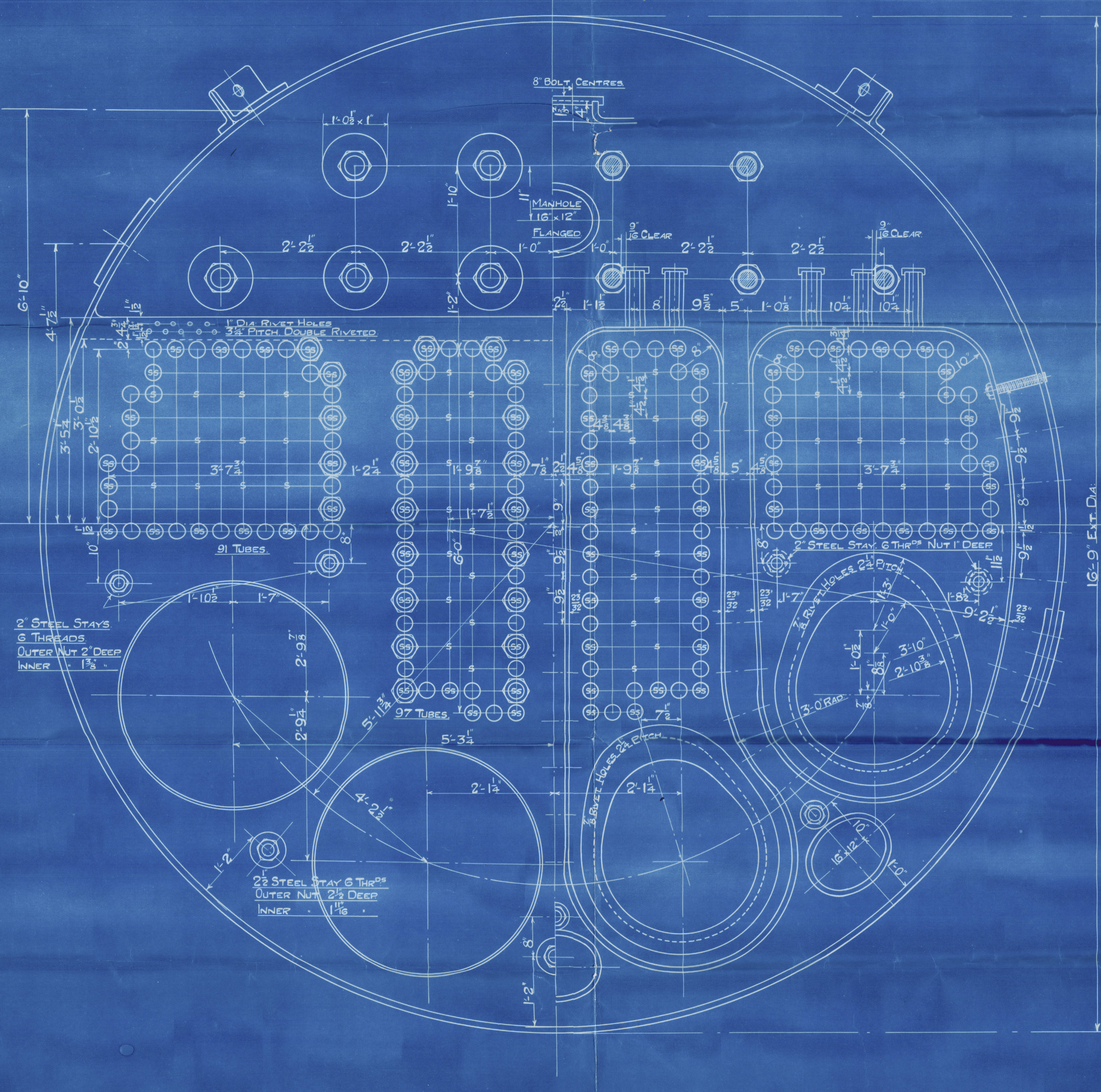
ALL PLATES, STAYS & RIVETS - STEEL. SMOKE TUBES - WROUGHT IRON.

TENSILE STRENGTH OF SHELL PLATES & BUTTS - 28 3/4 TO 32 3/4 TONS/SQ.

GIRDER & MAIN STAYS 28 - 32

OTHER PLATES & SCREWED STAYS 26 - 30

ALL HOLES DRILLED IN PLACE AFTER PLATES ARE BENT.



STAYS MARKED THUS O 2" DIA 9 THREADS (NUTS FITTED)
OTHER STAYS 1 1/2" DIA 9 THREADS
1 1/2" NUTS 2" DEEP, 2" NUTS 1" DEEP

1 THUS.
1 OPPOSITE HAND

TRACING NO 661

CONTRACT 2546

Register

WS 96-0089

North Eastern Marine
ENG. Co's

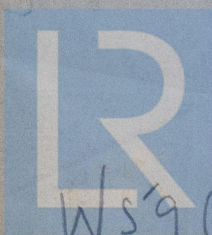
CONTRACT 2546.

MAIN BOILERS.

S. S. "KENTON."

NEWCASTLE ON TYNE.

Report No. 80909.



© 2021

Lloyd's Register
Foundation

Ws'96