

RIVETING OF SIDE LONGITUDINALS.

RIVETS SPACED 6 DIAS. APART.

RIVETS SPACED 6 DIAS. APART.

RIVETS SPACED 5 DIAS. APART.

RIVETS SPACED 5 DIAS. APART.

RIVETS SPACED 5 DIAS. APART.

RIVETS SPACED 5 DIAS. APART FOR 10 RIVETS.
EACH SIDE TRANS & BHS 6 DIAS. ELSEWHERE.

RIVETS SPACED 5 DIAS. APART.

RIVETS SPACED 4 DIAS. APART FOR 10 RIVETS.
EACH SIDE TRANS & BHS 5 DIAS. ELSEWHERE.

- DITTO -

- DITTO -

- DITTO -

RIVETS SPACED 4 DIAS. APART FOR 4 RIVETS.
EACH SIDE TRANS & BHS 6 DIAS. ELSEWHERE.

BOTTOM LONGITUDINALS 4 DIAS. APART FOR 4 RIVETS.
EACH SIDE TRANS & BHS 6 DIAS. ELSEWHERE.

TANK TOP LONGITUDINALS 5 DIAS. APART FOR 4 RIVETS.
EACH SIDE TRANS & BHS 6 DIAS. ELSEWHERE.

PLATE LONGITUDINALS IN BOTTOM RIVETS SPACED 2 DIAS. APART.

DECK LONGITUDINALS RIVETS SPACED 6 DIAS. APART.

WING TANK SIDE LONGIT. RIVETS 5 DIAS. APART.

DECK TRANSVERSES (CLEAR OF TANK) RIVETS TO DECK
5 DIAS. APART.

WING TANK TRANSVERSES RIVETS TO SHELL DECK &
INSIDE PLATING TWO ROWS 5 DIAS. APART.

RIVETS EACH

RIVETS IN

SIDE OF BUTT

BRACKETS TO BHS.

7/8 RIVETS.

7/8 RIVETS.

7/8 RIVETS.

7/8 RIVETS.

7/8 RIVETS.

7/8 RIVETS.

7/8 RIVETS.

7/8 RIVETS.

7/8 RIVETS.

7/8 RIVETS.

7/8 RIVETS.

7/8 RIVETS.

7/8 RIVETS.

7/8 RIVETS.

7/8 RIVETS.

7/8 RIVETS.

7/8 RIVETS.

7/8 RIVETS.

7/8 RIVETS.

7/8 RIVETS.

7/8 RIVETS.

7/8 RIVETS.

7/8 RIVETS.

7/8 RIVETS.

7/8 RIVETS.

7/8 RIVETS.

7/8 RIVETS.

7/8 RIVETS.

7/8 RIVETS.

7/8 RIVETS.

7/8 RIVETS.

7/8 RIVETS.

7/8 RIVETS.

7/8 RIVETS.

7/8 RIVETS.

7/8 RIVETS.

7/8 RIVETS.

7/8 RIVETS.

7/8 RIVETS.

7/8 RIVETS.

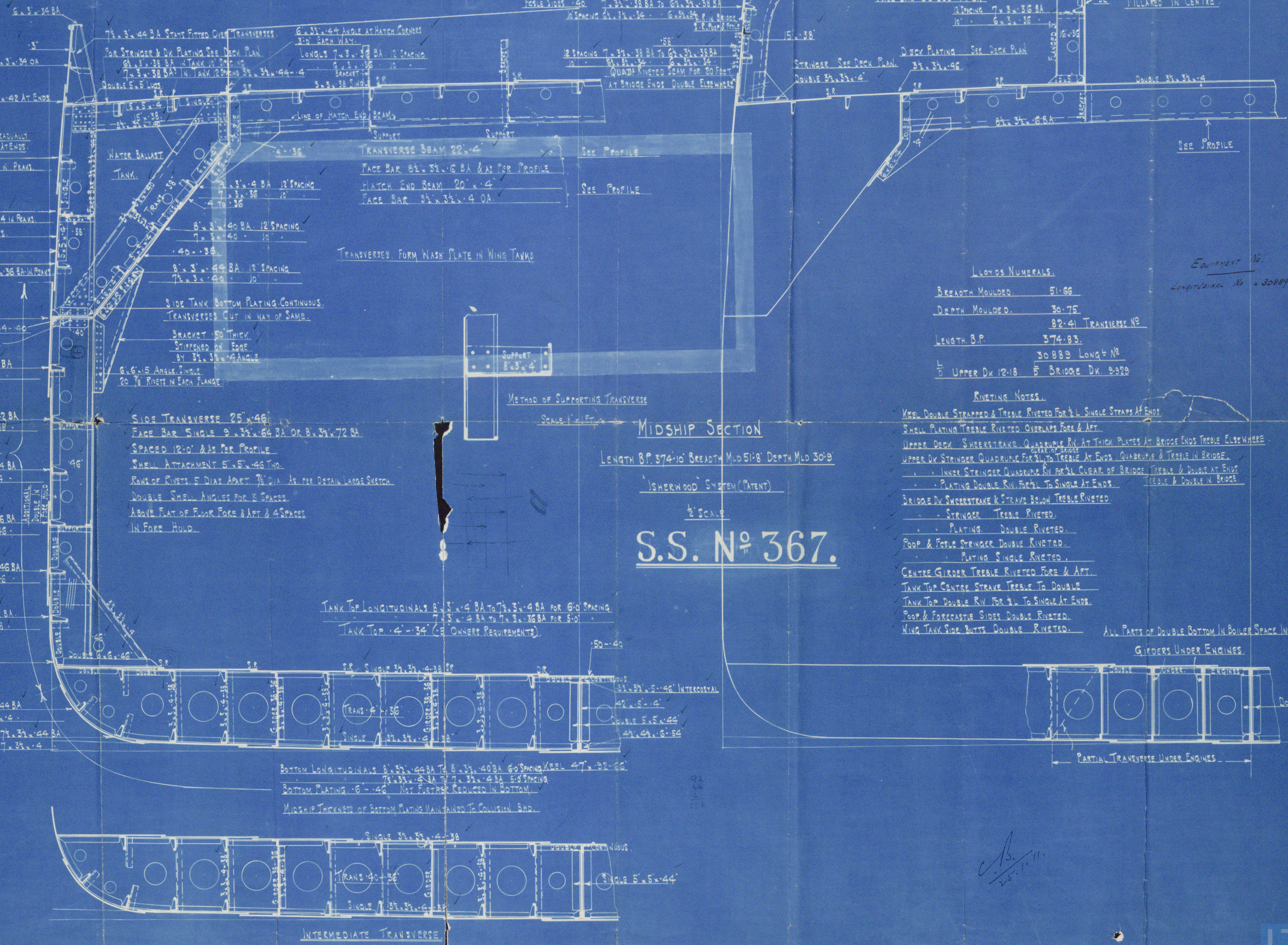
7/8 RIVETS.

7/8 RIVETS.

MESSRS. SHORT BROS. LTD.

SHIPBUILDERS.

SUNDER LAND.



LYONS NUMERALS.

BREADTH MOULDED.	51.66
DEPTH MOULDED.	30.75
LENGTH B.P.	374.83
L	30889
U	5
BRIDGE DK.	2.928

- RIVETING NOTES.
- KEEL DOUBLE STRAPPED & TREBLE RIVETED FOR 1/2 L SINGLE STRAPS AT ENDS.
 - SHELL PLATING TREBLE RIVETED OVERLAPS FORE & AFT.
 - UPPER DECK SHEERSTRAKE QUADRUPLE RIV. AT THICK PLATES AT BRIDGE ENDS TREBLE ELSEWHERE.
 - UPPER DK STRINGER QUADRUPLE FOR 1/2 L TO TREBLE AT ENDS. QUADRUPLE & TREBLE IN BRIDGE.
 - INNER STRINGER QUADRUPLE RIV. FOR 1/2 L CLEAR OF BRIDGE TREBLE & DOUBLE AT ENDS.
 - PLATING DOUBLE RIV. FOR 1/2 L TO SINGLE AT ENDS. TREBLE & DOUBLE IN BRIDGE.
 - BRIDGE DK SHEERSTRAKE & STRANG BELOW TREBLE RIVETED.
 - STRINGER TREBLE RIVETED.
 - PLATING DOUBLE RIVETED.
 - POOP & FORECASTLE SIDES DOUBLE RIVETED.
 - PLATING SINGLE RIVETED.
 - CENTRE GIRDER TREBLE RIVETED FORE & AFT.
 - TANK TOP CENTRE STRAKE TREBLE TO DOUBLE.
 - TANK TOP DOUBLE RIV. FOR 1/2 L TO SINGLE AT ENDS.
 - POOP & FORECASTLE SIDES DOUBLE RIVETED.
 - WING TANK SIDE BUTTS DOUBLE RIVETED.
- ALL PARTS OF DOUBLE BOTTOM IN BOILER SPACE INCREASED AS PER RULE GIRDERS UNDER ENGINES.

EQUIPMENT NO.
LONGITUDINAL NO. 30889

S.S. N° 367.

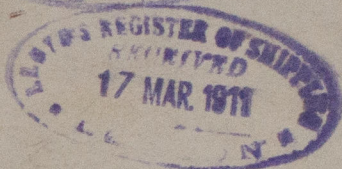
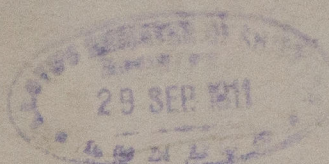
Amended Midship Section

Mess^r Short Bros.

No. 367

S.S. "WABANA"

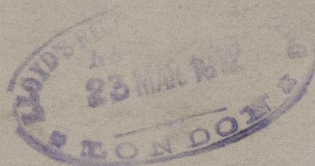
No. Report No 25098.



+ No. 365 *File 25039*
S.S. "MASKINONGE"



No. Report No. 25183



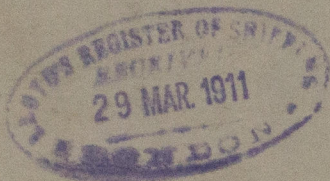
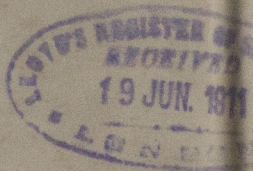
RETAIN



© 2021

Lloyd's Register
Foundation

W509-0187



© 2021

Lloyd's Register
Foundation