

# MIDSHIP SECTION

## S.S. 495-500

SCANTLING NUMBERS

BREADTH 52' 0"  
DEPTH 32' 31"  
44' 38" TRANSVERSE NUMBER  
410  
34' 67' 5" LONGITUDINAL NUMBER  
1/10 IN WAY OF BRIDGE 10' 11"  
1/10 TO UPPER DECK 12' 08"  
1/10 IN WAY OF DECK OR FOR 8' 66"

DIMENSIONS 410' 0" x 52' 0" MLO CLASS 100 AT LLOYD'S

Scale 1/4" = 1' 0"

POOP DECK PLATING 3/16"  
FELL DECK PLATING 3/16"  
FELL DECK SHAPED WITH 5' 3" R. PINE

EQUIPMENT NUMERALS

MULL 610 (52' x 32' 58") 34677.8  
P.A.C. (224' x 7' 96") 1337.3  
HOUSES ON BRIDGE (101' x 7' 75") 391.4  
364.065

EQUIPMENT

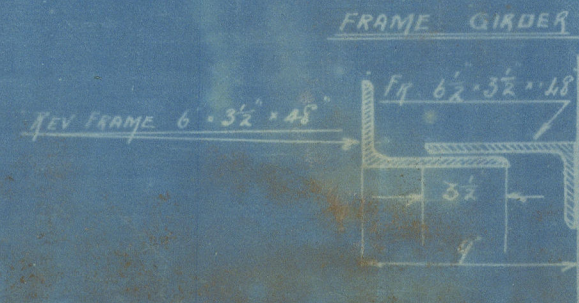
2 POWER ANCHORS 63 1/2 CWT EACH STOCKLESS  
1 POWER ANCHOR 54 1/2 CWT STOCKLESS  
1 STREAM ANCHOR 17 1/2 CWT EX STOCK  
1 HEDGE ANCHOR 12 CWT EX STOCK  
270 FATHOMS 2 1/2" STUD CHAIN CABLE  
40 FATHOMS 1 1/2" STREAM CHAIN OR 4 1/2" STEEL WIRE  
120 FATHOMS 1/2" HEMP OR 5" STEEL WIRE  
2 OF 90 FATHOMS EACH, HAWKERS B, OR 2 1/2" STEEL WIRE  
2 OF 90 FATHOMS EACH, 7 HAWKS, OR 2 1/2" STEEL WIRE  
STEELE WIRE WIRE OWNERS' CHOICE

FRAMES: 6' 1/2" x 3' 1/2" 48" SPACED R6 1/2 BETWEEN PEAKS, EXCEPT IN N°1 HOLD & TUNNEL D° SET TO FORM WITH REV FRAME, 9' GIRDER IN PEAKS, 6' 1/2" x 3' 1/2" 38" TO FORM 12 GIRDER SPACED 4' 4" DOUBLE ANGLES IN AFT PEAK IN N°1 HOLD AND TUNNEL D° SET, 6' 1/2" x 3' 1/2" 40" FORMING 7 GIRDER FRAMES EXTEND TO POOP BRIDGE AND FORECASTLE, AND TO UPPER D° IN WELLS. BULKHEAD FRAMES TO BE SINGLE 6' 1/2" x 3' 1/2" 38" BETWEEN PEAKS EXCEPT IN N°1 HOLD AND TUNNEL DECK SET IN N°1 HOLD AND TUNNEL D° SET 3' 1/2" x 3' 1/2" 40" IN PEAK 3' 1/2" x 3' 1/2" 38" DOUBLE ANGLES IN AFT PEAK. ALL TO UPPER DECK AND ALTERNATE 1/2" TO FELL IN WAY OF SAME.

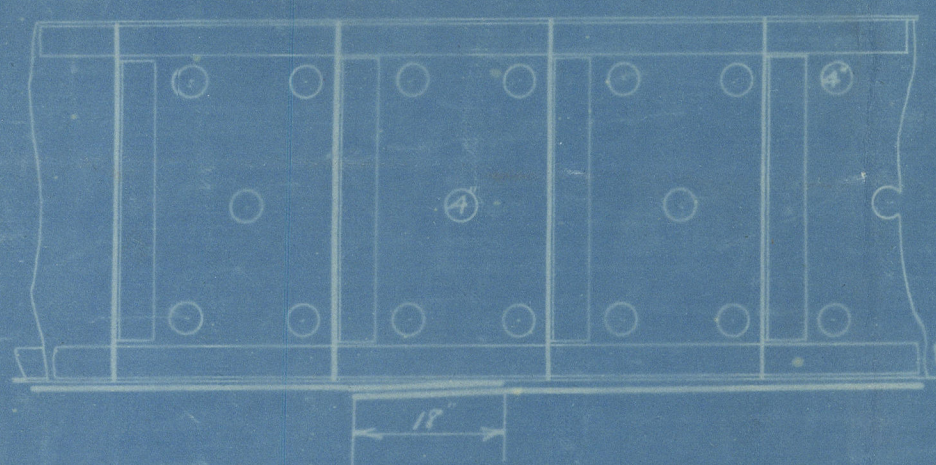
DOUBLE BOTTOM: FRAMES, 3' 1/2" x 3' 1/2" 48" FOR 1/2 LENGTH, TO 48" AT ENDS, DOUBLE FROM 1/4 L TO ALL BULKHEADS. REV FRAMES, 3' 1/2" x 3' 1/2" 48" FOR 1/2 LENGTH, TO 48" AT ENDS. DOUBLE IN ENG. SPACE, FROM GIRDER TO GIRDER, OUTSIDE ENG. SPACE 4' 1/2" x 3' 1/2" 48" TO TANK TOP 3' 1/2" x 3' 1/2" 58" (12" 06 PER OWNERS) IN D° SPACE, DOUBLE UNDER BOILER BEAMS, IRON FLOORS: 1/2" 06 FOR 1/2 L, TO 3/4" 06 AT ENDS, 5/16" (58 1/2 PER OWNERS) IRON IN D° SPACE, 3/4" STEEL IN ENGINE ROOM. FLOOR TAILS 40 FOR 1/2 LENGTH, TO 3/4" 06 AT ENDS, 3/4" IN D° SPACE. INTERCOSTALS: 40 FOR 1/2 L, TO 3/4" 06 AT ENDS, FLANGED TO TANK TOP AND FLOORS. IN ENGINE ROOM: 50 NOT FLANGED. IN BOILER ROOM: 56 (50 06 PER OWNERS) IRON, NOT FLANGED. INTERCOSTAL ANGLES, TOP ANGLES ENGINE ROOM, 3' 1/2" x 3' 1/2" 48" AND 4' 1/2" x 3' 1/2" 48" TOP ANGLE, D° ROOM, 3' 1/2" x 3' 1/2" 58" (52 06 PER OWNERS) IRON. VERT ANGLE, ENG ROOM, 3' 1/2" x 3' 1/2" 58". VERT ANGLE IN D° ROOM, 3' 1/2" x 3' 1/2" 58" (50 06 PER OWNERS) IRON. SHELL ANGLES, 3' 1/2" x 3' 1/2" 58" FOR 1/2 LENGTH, TO 40" AT ENDS.

HOLD BULKHEADS AS PER RULES, TWELVE D° 56", 6 1/2" FLANGES STEM 10 1/2" x 2 1/4" RUDDER POST 9' x 8" PROPELLER POST 10 1/2" x 2" RUDDER STOCK TO BE INCREASED 1/2" ABOVE RULE. RIVETS OF IRON.

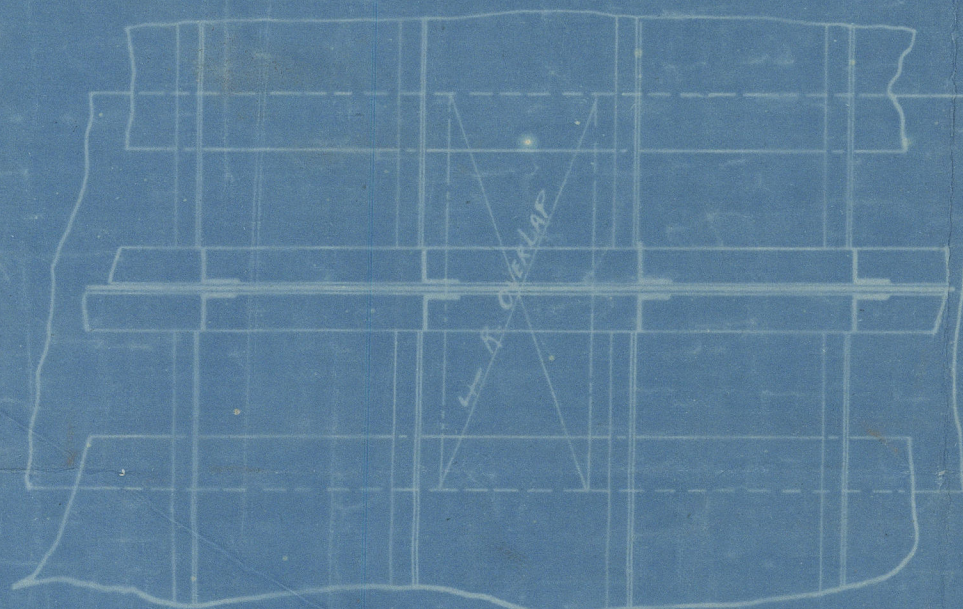
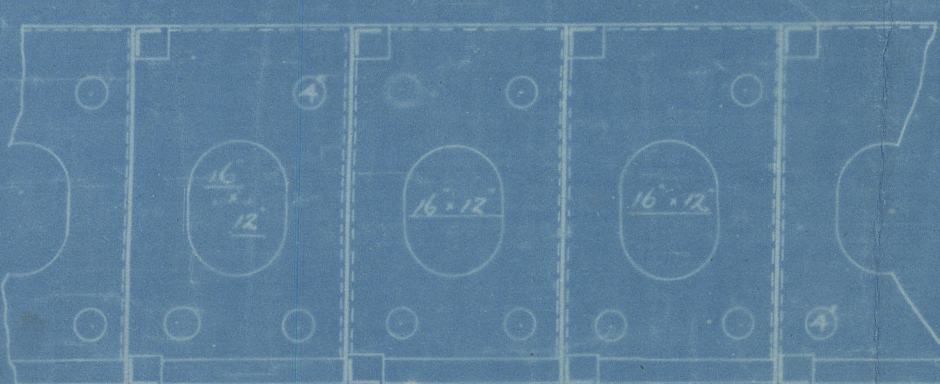
SECTION OF FRAME GIRDER



ELEVATION OF CENTRE GIRDER WHERE NOT WATER TIGHT



ELEVATION OF TANK INTERCOSTALS



PLAN OF KEEL PLATE OVERLAPS

CENTRE GIRDER PLATE 44' 52" FOR 1/2 L, TO 48" AT ENDS 40 IN D° SPACE, BUTTS 3/8" F AND A. VERTICAL ANGLES, WINDHOLE 3' 5" x 3' 1/2", FOR 1/2 LENGTH, AND 3' 1/2" x 3' 1/2" 40" SINGLE AT ENDS. TOP ANGLE, SIMILAR 4' 1/2" x 3' 1/2" 60" FOR 1/2 L, TO 48" AT ENDS 48 1/2" 10 IN D° SPACE, 52 1/2" x 3' 1/2" 48" DOUBLE IN ENGINE SPACE AND N°1 HOLD. BOTTOM ANGLE, 4' 1/2" x 3' 1/2" 60" FOR 1/2 L, TO 48" AT ENDS.

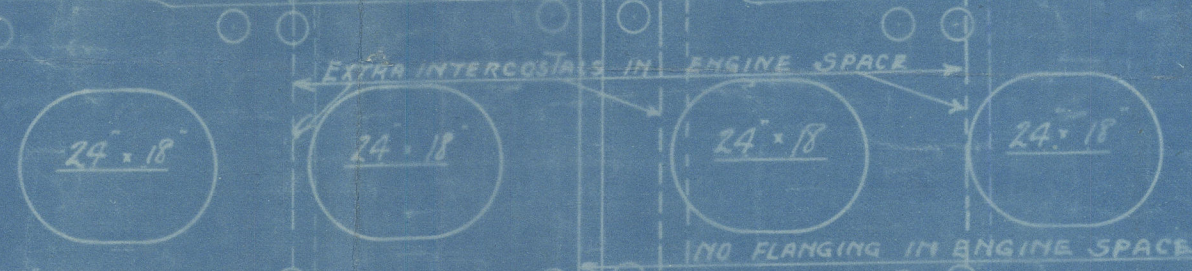
11 1/2" RIVETS IN LARGE SINGLE  
7 1/2" RIVETS IN SMALL BAR

FLAT PLATE KEEL 47' 1' 02" FOR 1/2 L TO 7' 8" AT ENDS. (FOR FIG 17) OWNERS' REQUIREMENTS 12 1/2" F AND A (NOT 12 1/2") BUTTS 4 1/2" 7 3/8"

TANK TOP CENTRE STRAKE TO 52' FOR 1/2 L, TO 48" AT ENDS 14 IN BOILER SPACE, THICK UNDER ENGINES PLATING 40 FOR 1/2 L, TO 36" AT ENDS 1/4 IN BOILER SPACE AND 1 THICK UNDER ENGINES BUTTS OF CENTRE STRAKE 3/8" TO 2 1/4" BUTTS IN E AND A SPACE 3/8" REMAINDER OF BUTTS 2 1/4" TO 1 1/4"

NO MANHOLES IN THE FLOORS AND SIDE GIRDERS BELOW WIDELY SPACED PILLARS

2 1/4" IN LAND B SP 1 1/4" IN LAND B SP 2 1/4" IN LAND B SP 2 1/4" IN LAND B SP 2 1/4" IN LAND B SP 2 1/4" IN LAND B SP



NOTE: STRAKES INSIDE DOUBLE BOTTOM TO BE REDUCED AS PER RULES. 3 STRAKES MIDSHIP THE RECESS CARRIED FOR TO CELL BULKHEAD AND BOTTOM STRENGTHEN FOR FULL FORM AS PER RULES.

BRIDGE DECK PLATING 3/16" BUTTS 3/8"

POOP AND FELL STRINGER PLATES 3/16" BUTTS 2 1/4" 3/4 FOR POOP ANGLES 3/4" x 3/4" 3/4"

UPPER DECK STRINGER 63' 62" FOR 1/2 L, TO 36' 44" AT ENDS BUTTS 1/4" TO 3/8" (INCREASED AT BRIDGE ENDS) INSIDE BRIDGE 48" BUTTS 3/8" STRINGER ANGLE 5' 3" 68" IN WELLS 3/8" x 3/8" 44" IN POOP, BRIDGE AND FORECASTLE.

SHELL (HOLDS) 62' 3/2" x 48" 44"

MAIN DECK STRINGER IN BRIDGE 61' 44" OUTSIDE BRIDGE, 61' 48" FOR 1/2 L, TO 36' 44" AT ENDS BUTTS 3/8" F AND A

WIDE SPACED PILLARS AND GIRDERS TO BE SUBMITTED.

ORLOP DECK IN N°1 HOLD FOR SCANTLING SEE PROFILE.

SHEERSTRAKE 95' x 70" BUTTS 3/8" LAPS WITH 2 OUTER ROWS SPACED 4 1/2" DIAM (R TO R) POOP SIDE PLATING 3/8" FELL SIDE PLATING 4/8" BUTTS 2 1/4"

6 IN BRIDGE, ELSEWHERE 3/4" TO 5" SHEERSTRAKE IN WELLS 47' 92" (90' 02") TO 46" AT ENDS BUTTS DOUBLE STRAPS 3/8" TO 3/4" LAPS AT ENDS. SHEERSTRAKES DOUBLED AT BRIDGE ENDS IN WAY OF BRIDGE 66 (64' 02") BUTTS 3/8"

6 TO 5 1/4" RIVETS. 6 1/2" TO 5 1/4" 1/8" RIVETS IN WELLS

IN WELLS 76" (74' 02") FOR 1/2 L, TO 46" AT ENDS BUTTS 3/8" F AND A 66 (64' 02") IN WAY OF BRIDGE BUTTS 3/8"

66 (64' 02") FOR 1/2 L, TO 46" AT ENDS BUTTS 3/8" F AND A

SHELL CHOCKS 62' 3/2" x 48" 44"

STRAKES WHICH ARE OVER RULE WIDTH TO BE QUADRIPLY RIVETED FOR 1/2 L

66 (64' 02") FOR 1/2 L, TO 46" AT ENDS BUTTS 3/8" F AND A

PROPELLER BOSS PLATES 7/8" NOTE: 5 STRAKES HAVE BEEN INCREASED 1/8" BETWEEN PEAK BULKHEAD IN VIEW OF SIDE STRINGERS

66 (64' 02") FOR 1/2 L, TO 46" AT ENDS BUTTS 3/8" F AND A

REMARKS: FRAMES AND REV FRAMES BETWEEN PEAK BULKHEAD AND TO BULKHEAD BETWEEN TO BE SUBMITTED. ORLOP DECK PLATING TO BE SUBMITTED. MAIN DECK PLATING TO BE SUBMITTED. UPPER DECK PLATING IN WAY OF PROPELLER AND IN POOP PART OF BRIDGE TO BE SUBMITTED. FORECASTLE OR ENGINES TO BE SUBMITTED.

66 FOR 1/2 L, TO 48" AT ENDS BUTTS 4 1/2" 3/4"

66 FOR 1/2 L, TO 48" AT ENDS BUTTS 4 1/2" 3/4"

16 1/2" RIVETS IN LARGE SINGLE BAR 7 1/2" 3/8"

16 1/2" RIVETS IN LARGE SINGLE BAR 7 1/2" 3/8"

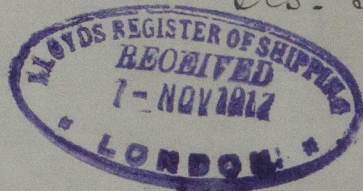


8/8/Actor  
N<sup>o</sup> 4 90.

Wind Ship Section

Ship on bull

Cils. 37234



W60-0187



© 2020

Lloyd's Register  
Foundation