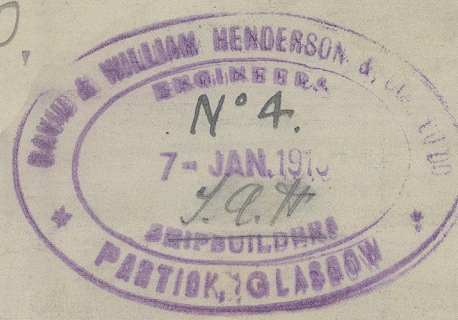


MIDSHIP SECTION.

S.S. 495 500



EQUIPMENT NUMERALS

WELL 140 (52-58)	34677.8
P. 5. F. (11-12-14) = 75	1557.5
HOISTS ON BRIDGE (101-115) = 5	541.4
	36406.5

EQUIPMENT

- 2 POWER ANCHORS 6 3/4 CWS EACH STOCKLESS
- 1 POWER ANCHOR 6 3/4 CWS STOCKLESS
- 1 STEEL ANCHOR 1 1/2 CWS 12 STOCK
- 1 STEEL ANCHOR 1 1/2 CWS 12 STOCK
- 270 TONS 2 1/2 CWS 12 STOCK
- 90 TONS 1 1/2 CWS 12 STOCK
- 120 TONS 1 1/2 CWS 12 STOCK
- 2 of 40 TONS EACH, HANDLES 8, ON 2 1/2 CWS 12 STOCK
- 2 of 40 TONS EACH, HANDLES 8, ON 2 1/2 CWS 12 STOCK

12-1-15
12-11-15 (1000) Numbers
14-1-16
52.0
37.58
84.58 TRANSVERSE NUMERALS
1110
34,677.8 LONGITUDINAL NUMERALS
5 IN WAY OF BRIDGE 10.1
5 IN UPPER D.M. 12-58
4-17.66 IN WAY OF ORIGIN FOR 5.11

DIMENSIONS 410' 0" x 52' 0" MD x 52' 7" MD (CLASS 100 A1 AT LLOYDS)
Scale 1/2" = 1' 0"

POOP D.M. PLATING 34 BUTTS 1.8
POOP D.M. PLATING 36 BUTTS 1.8
POOP D.M. SHEATHING WITH 5-5 P. PLATE

BRIDGE D.M. STRANGER PLATE 58 x 56 BUTTS 3.8

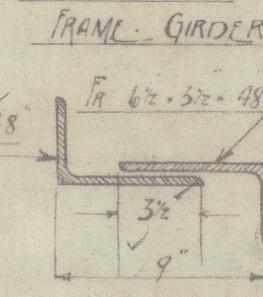
POOP AND POOP STRANGER PLATES 35 x 36 BUTTS 2.8, 3.4 FOR POOP
ANGLES 3 1/2 x 3 1/2 x 3 1/2

FRAMES: 6 1/2 x 3 1/2 x 98 SPACED 2 1/2" BETWEEN FRAMES, EXCEPT IN NO. 1 HOLD & TUNNEL D.M. AT
TO FORM WITH R.C.V. FRAME, 9" GIRDER
IN FRAMES, 6 1/2 x 3 1/2 x 38, TO 1/2" 9" GIRDER SPACED 2 1/2" DOUBLE ANGLES IN ALL PLATE
IN NO. 1 HOLD, AND TUNNEL D.M. AT, 6 1/2 x 3 1/2 x 110, SPACED 2 1/2" GIRDER
FRAMES, EXCEPT TO POOP BRIDGE AND FORECASTLE, AND TO UPPER D.M. IN WELLS.
DUALHEAD FRAMES TO BE SINGLE
PEX FRAMES: 6 1/2 x 3 1/2 x 110, EXCEPT IN NO. 1 HOLD AND TUNNEL D.M. AT
IN NO. 1 HOLD, AND TUNNEL D.M. AT, 3 1/2 x 3 1/2 x 40
IN PLATE, 3 1/2 x 3 1/2 x 38, 1 1/2" 9" GIRDER
ALL TO UPPER D.M., AND, ALTERNATELY, TO POOP IN WAY OF BARGE

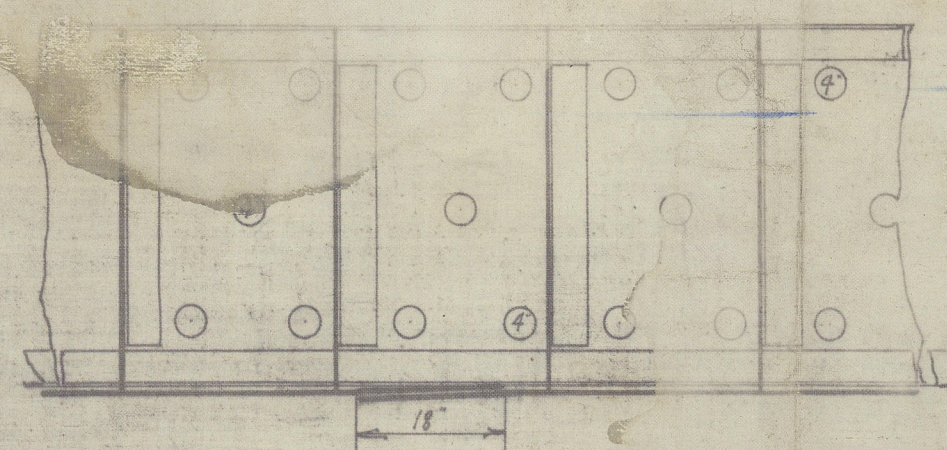
DOUBLE BOTTOM: FRAMES, 3 1/2 x 3 1/2 x 42 FOR 1/2" LENGTH, TO 40 AT ENDS. DOUBLE FROM 35.5 TO 36.5
PEX FRAMES, 3 1/2 x 3 1/2 x 42 FOR 1/2" LENGTH, TO 40 AT ENDS
DOUBLE IN ENG. SPACE, FROM GIRDER TO GIRDER OUTSIDE ENG. SPACE, 4 1/2 x 3 1/2 x 110, SPACED 2 1/2"
3 1/2 x 3 1/2 x 58 (6 1/2 x 6 1/2 CWS) IN B SPACE, DOUBLE UNDER POWER BEARERS
FLOORS: 40 FOR 1/2", TO 36 AT ENDS. 4 1/2 (50 x 6 1/2 CWS) IRON IN B SPACE, 56 STEEL IN ENGINE ROOM
FLOOR LIDS, 40 FOR 1/2" LENGTH, TO 36 AT ENDS. 50 IN B SPACE
INTERCOSTALS, 40 FOR 1/2", TO 36 AT ENDS. PLANGED TO TOP OF 10" AND 10" FLOORS
IN ENGINE ROOM, 56 NOT PLANGED
IN BOILER ROOM, 56 (50 x 6 1/2 CWS) IRON, NOT PLANGED
INTERCOSTAL ANGLES, TOP ANGLES, ENGINE ROOMS, 3 1/2 x 3 1/2 x 58 AND 4 1/2 x 3 1/2 x 58
TOP ANGLE, B. ROOMS, 3 1/2 x 3 1/2 x 58 (52 x 6 1/2 CWS) IRON
VERT. ANGLE, ENO ROOM, 3 1/2 x 3 1/2 x 60
VERT. ANGLE IN D. ROOM, 4 1/2 x 3 1/2 x 58 (50 x 6 1/2 CWS) IRON
SHELL ANGLES, 3 1/2 x 3 1/2 x 42 FOR 1/2" LENGTH, TO 40 AT ENDS

HOLD DUALHEADS 10 1/2" 9" GIRDER, 10 1/2" 9" GIRDER
STEM 10 1/2" 9" GIRDER, 10 1/2" 9" GIRDER
RUDDER 10 1/2" 9" GIRDER, 10 1/2" 9" GIRDER

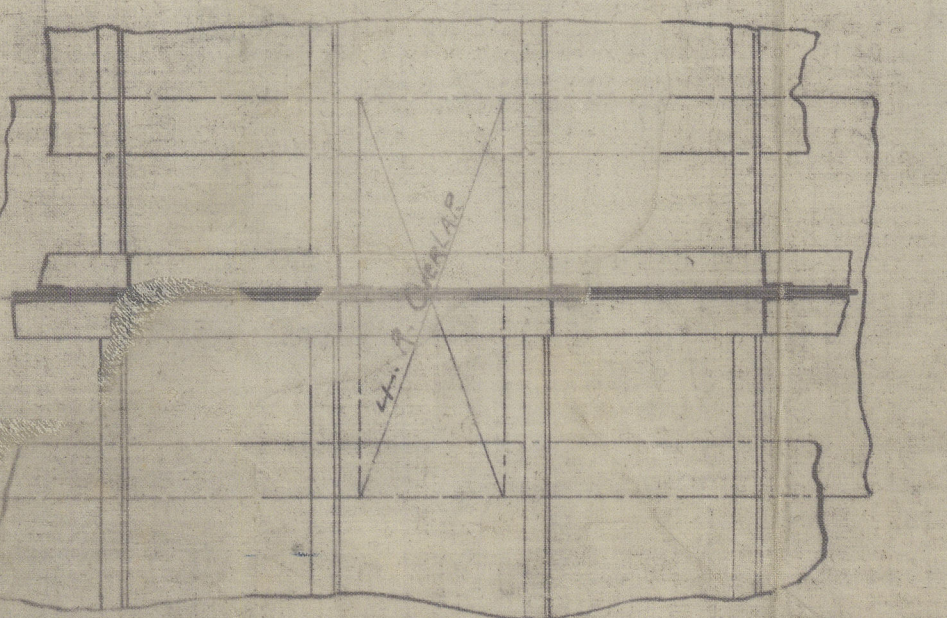
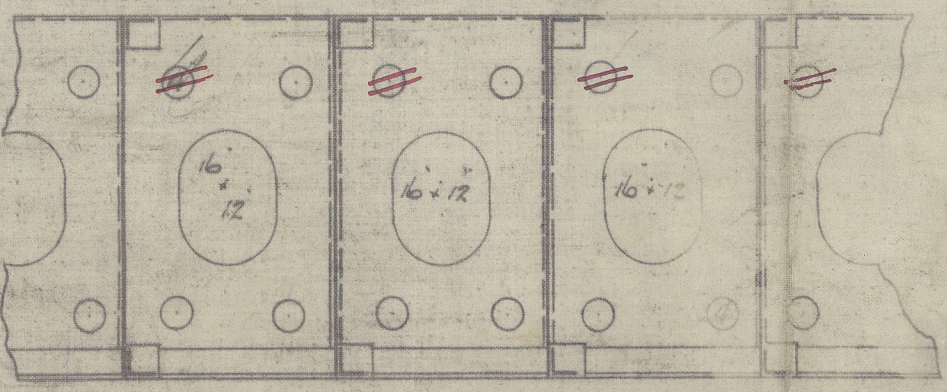
SECTION OF FRAME GIRDER



ELEVATION OF ENGINE ROOM GIRDERS



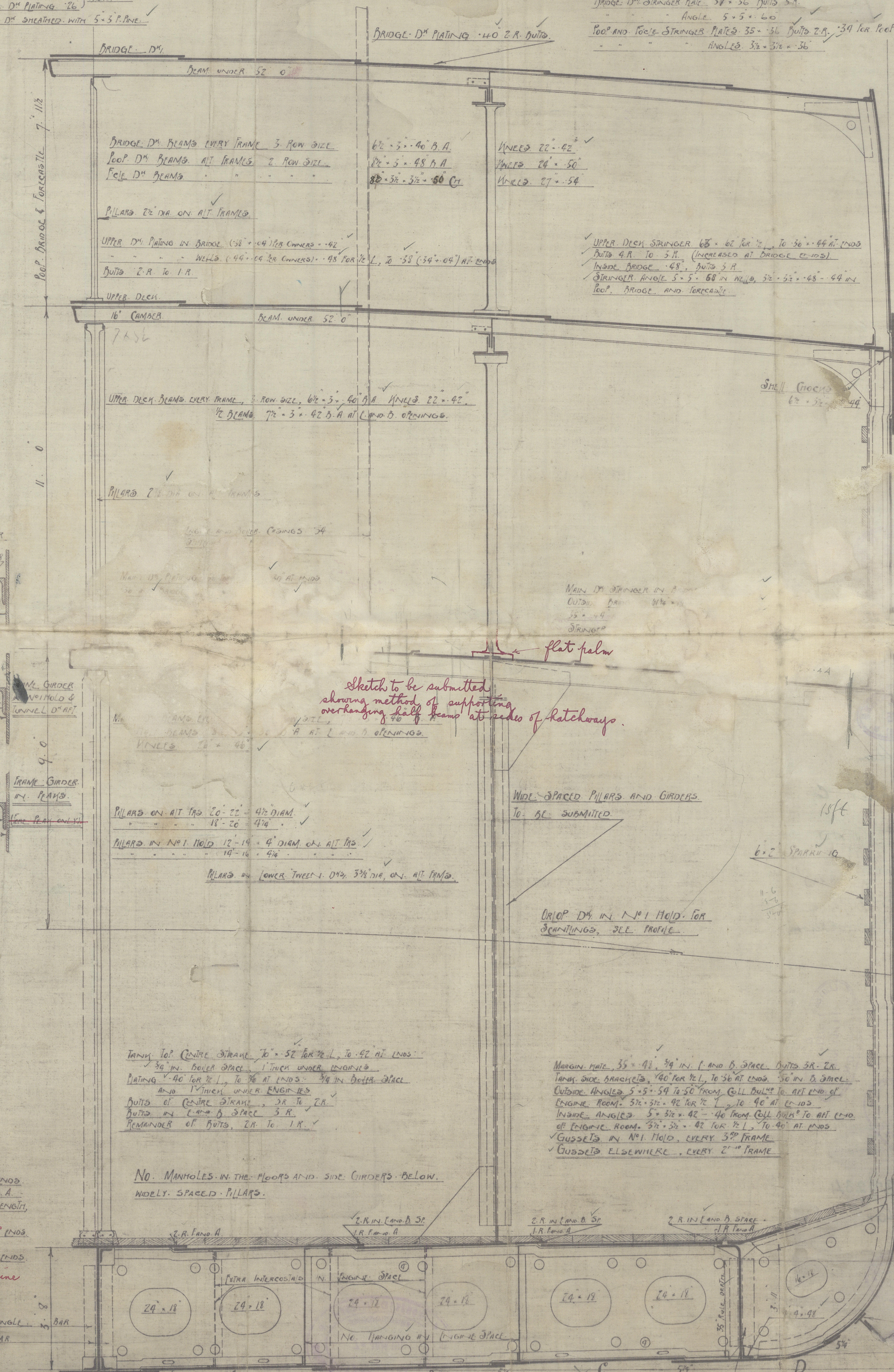
ELEVATION OF TANK INTERCOSTALS



PLAN OF KEEL PLATE OVERLAPS

CENTRAL GIRDER PLATE 44 x 52 FOR 1/2", TO 42 AT ENDS
60 IN B SPACE, BUTTS 3.8 F. AND A
VERTICAL ANGLE SINGLE, 5 x 5 x 58, FOR 1/2" LENGTH
AND 3 1/2 x 3 1/2 x 40 SINGLE AT ENDS
TOP ANGLE SINGLE 4 1/2 x 4 1/2 x 60 FOR 1/2", TO 36 AT ENDS
4 1/2 x 4 1/2 x 70 IN B SPACE
DOWN ANGLE, 4 1/2 x 4 1/2 x 60 FOR 1/2", TO 36 AT ENDS
3 1/2 x 3 1/2 x 52 = 48 DOUBLE IN ENGINE SPACE 9 1/2" HOLD

7 BUTTS IN LARGE SINGLE
19 BUTTS IN SMALL BAR



Sketch to be submitted showing method of supporting overhanging half beams at ends of hatchways.

flat palm

Strakes which are over Rule width to be quadruple riveted for 1/2"

66 (64 + 0.2) FOR 1/2", TO 46 AT ENDS
BUTTS 3.8 F. AND A

66 (64 + 0.2) FOR 1/2", TO 46 AT ENDS
BUTTS 3.8 F. AND A

66 (64 + 0.2) FOR 1/2", TO 46 AT ENDS
BUTTS 3.8 F. AND A

66 (64 + 0.2) FOR 1/2", TO 46 AT ENDS
BUTTS 3.8 F. AND A

66 (64 + 0.2) FOR 1/2", TO 46 AT ENDS
BUTTS 3.8 F. AND A

66 (64 + 0.2) FOR 1/2", TO 46 AT ENDS
BUTTS 3.8 F. AND A

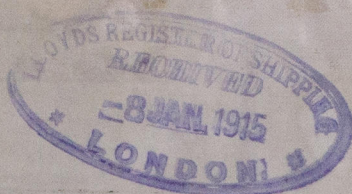
66 (64 + 0.2) FOR 1/2", TO 46 AT ENDS
BUTTS 3.8 F. AND A

66 (64 + 0.2) FOR 1/2", TO 46 AT ENDS
BUTTS 3.8 F. AND A

66 (64 + 0.2) FOR 1/2", TO 46 AT ENDS
BUTTS 3.8 F. AND A

66 (64 + 0.2) FOR 1/2", TO 46 AT ENDS
BUTTS 3.8 F. AND A

3 STRAKES MIDSHIP THICKNESS CHARGED FOR TO COLL. DULN?
AND BOTTOM STRENGTHENED FOR FULL FORM AS PER RULES



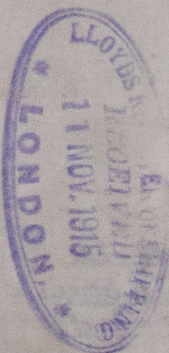
Indship Section

D W. Henderson & Co.

No 495/500

GLASGOW REPORT No. 37948

78 Governor.



GLASGOW REPORT No. 37234

5/5 Actor



© 2020

Lloyd's Register
Foundation