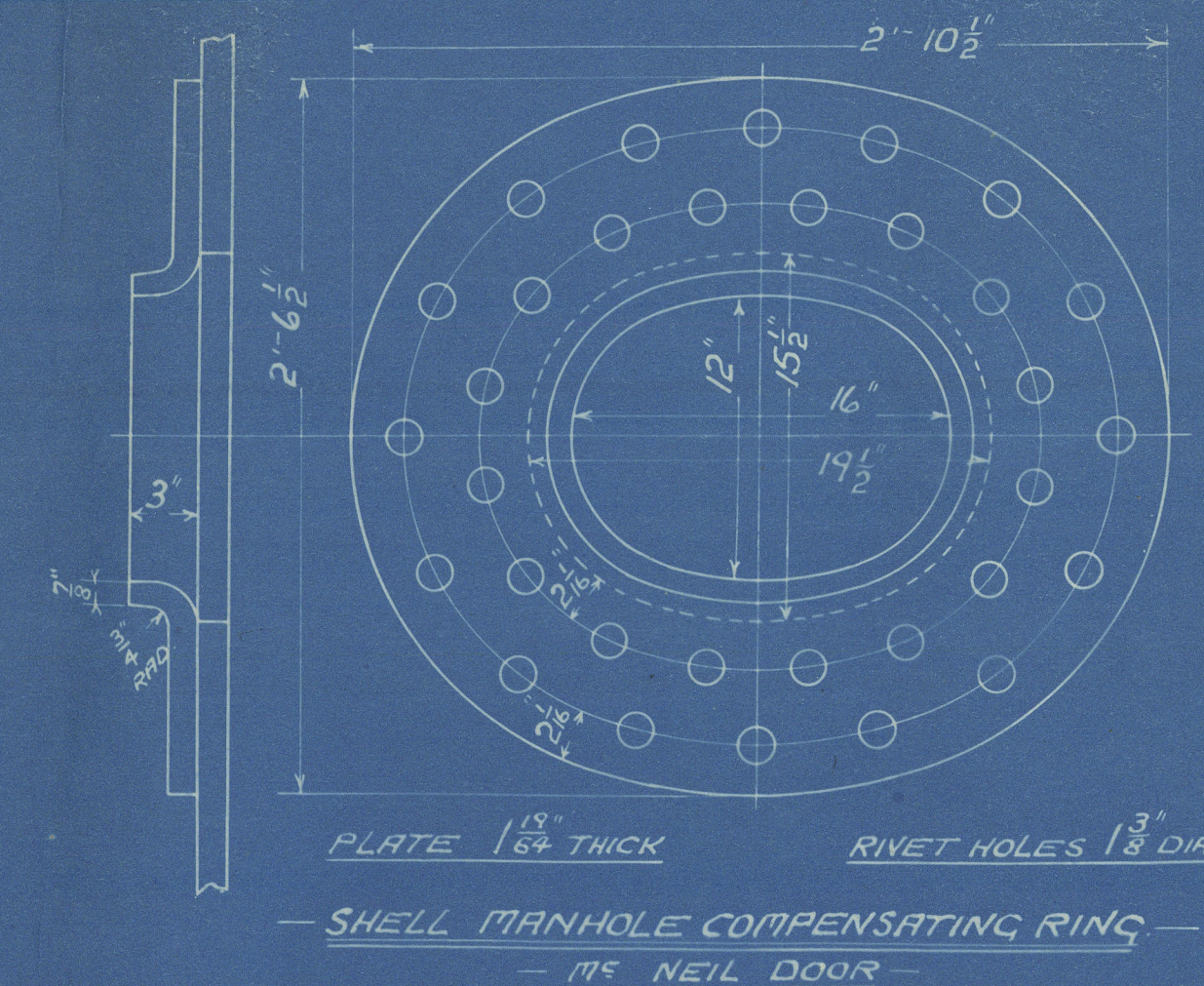
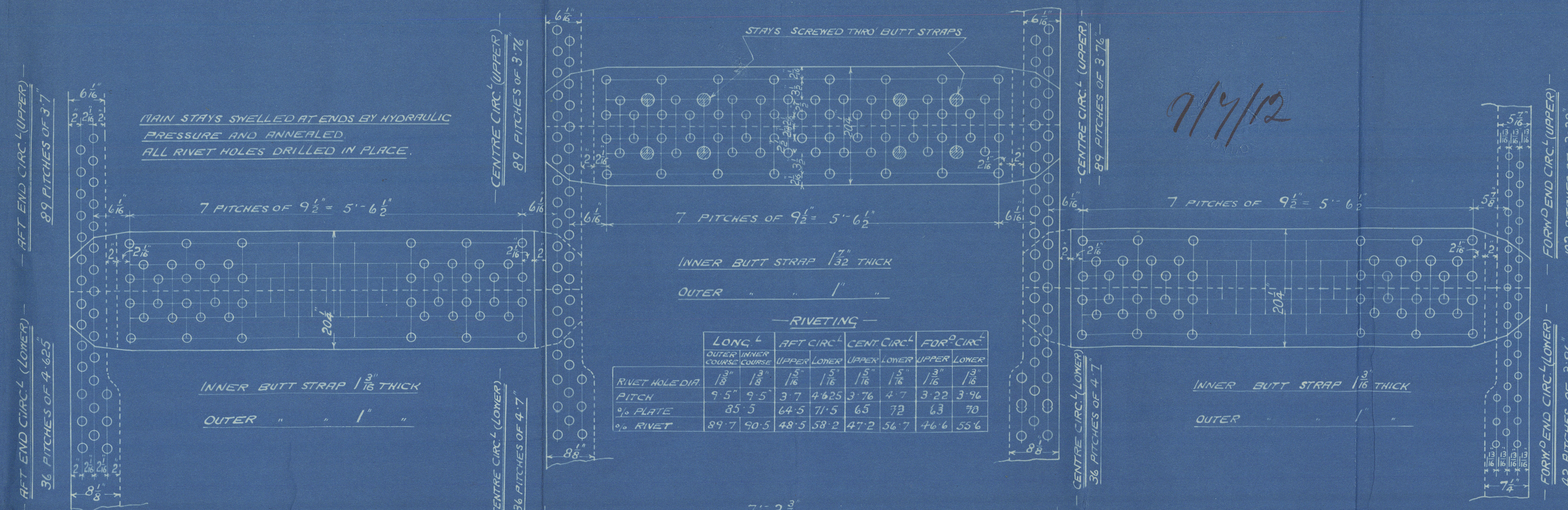
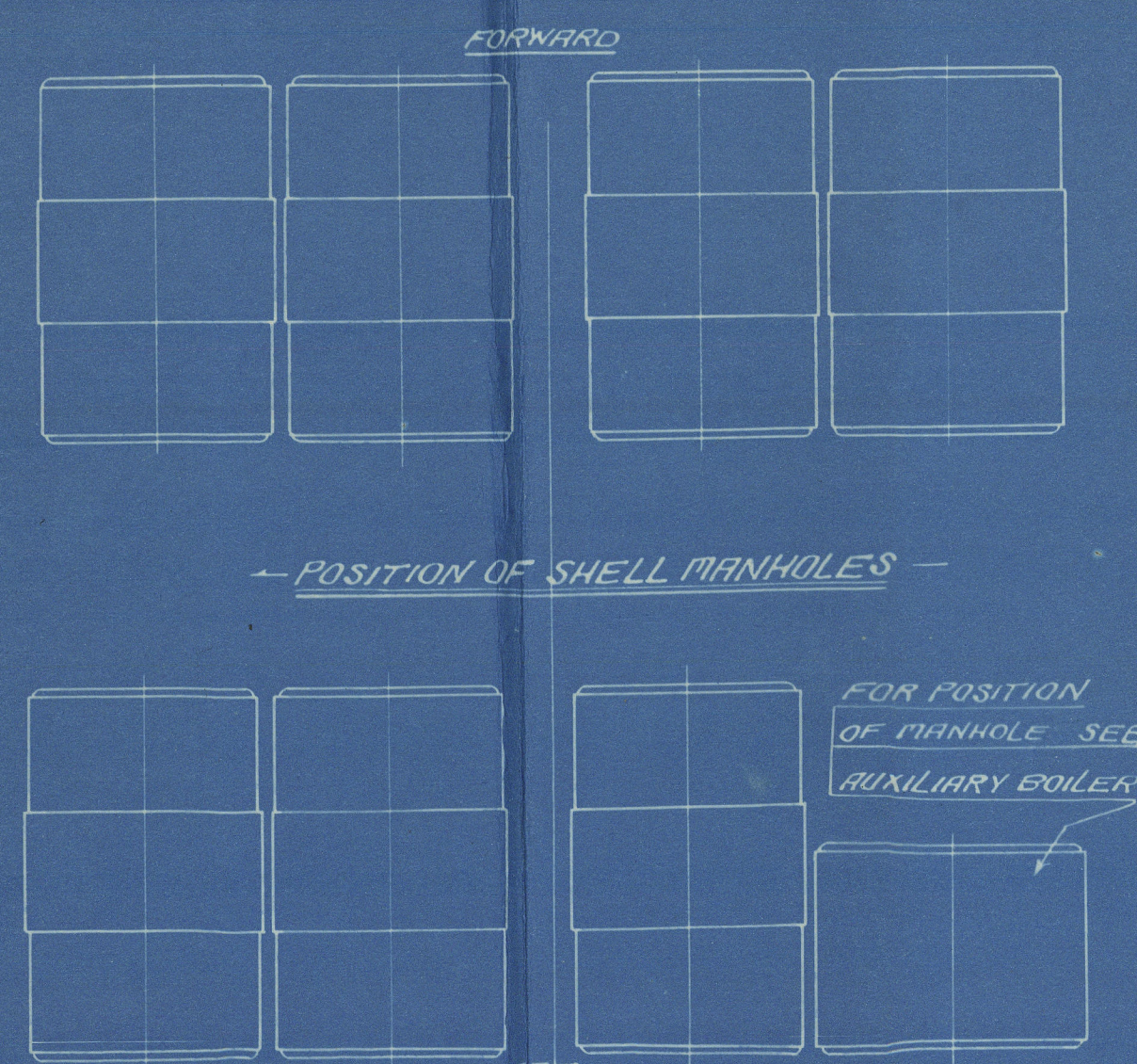
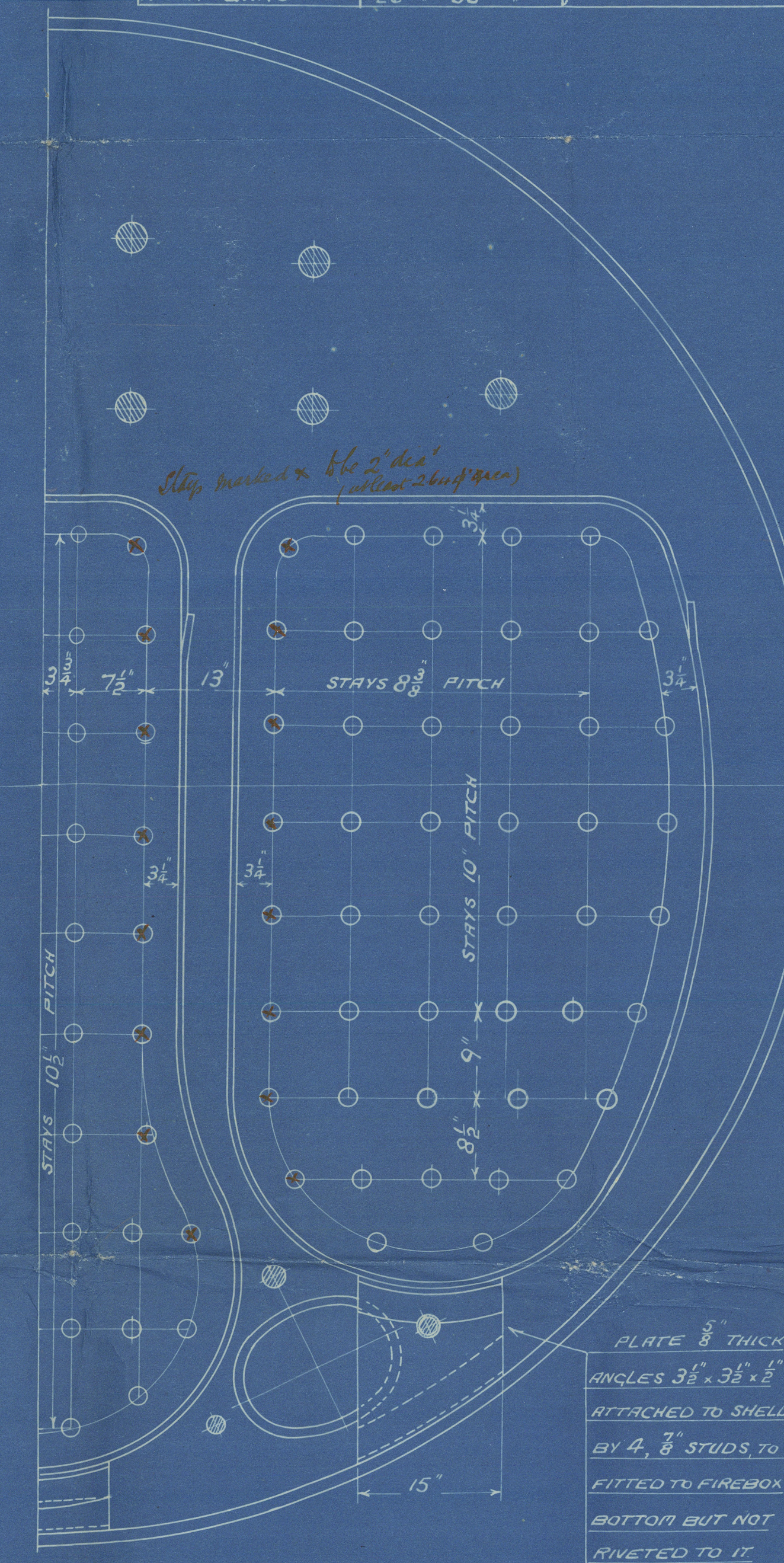
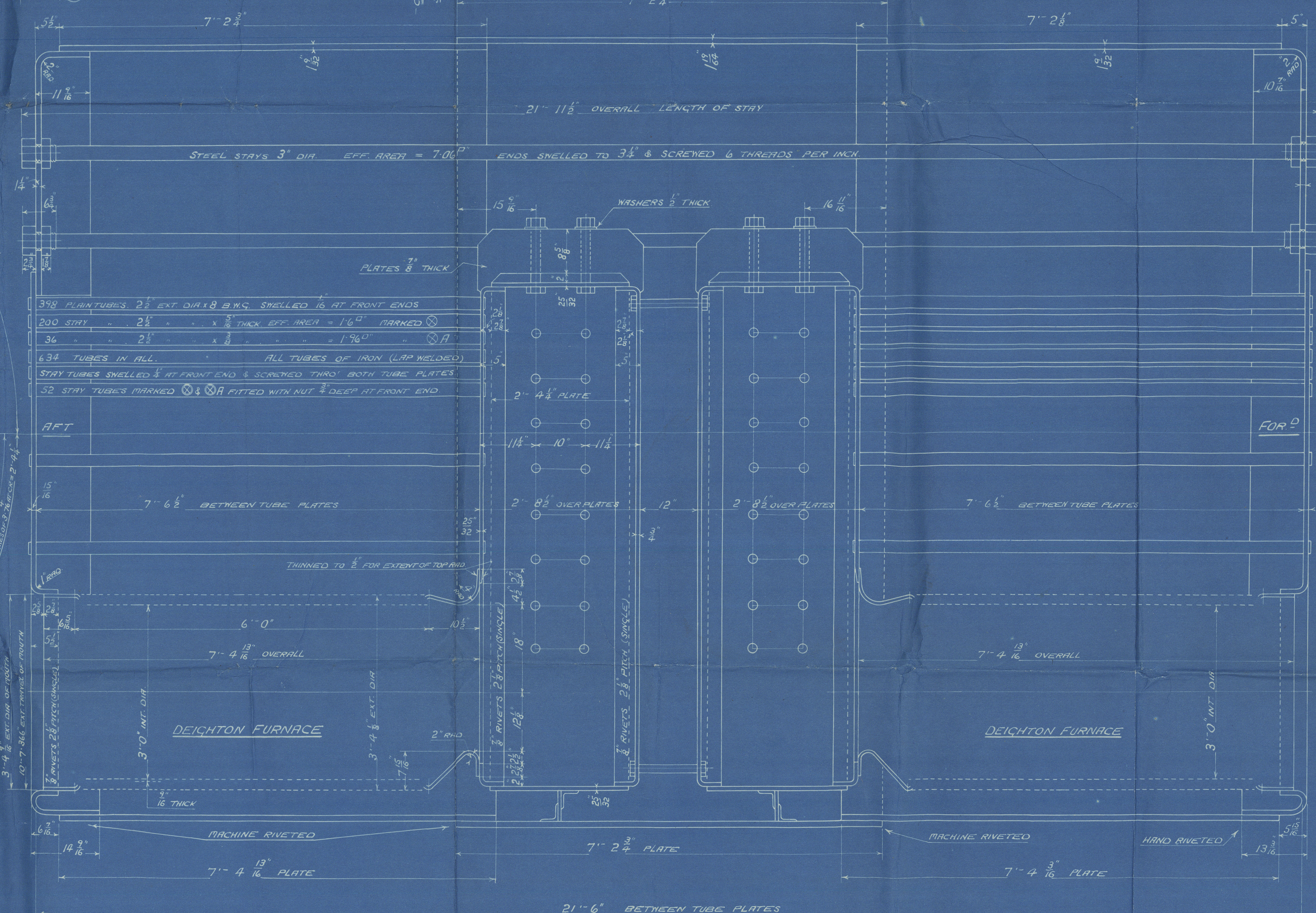
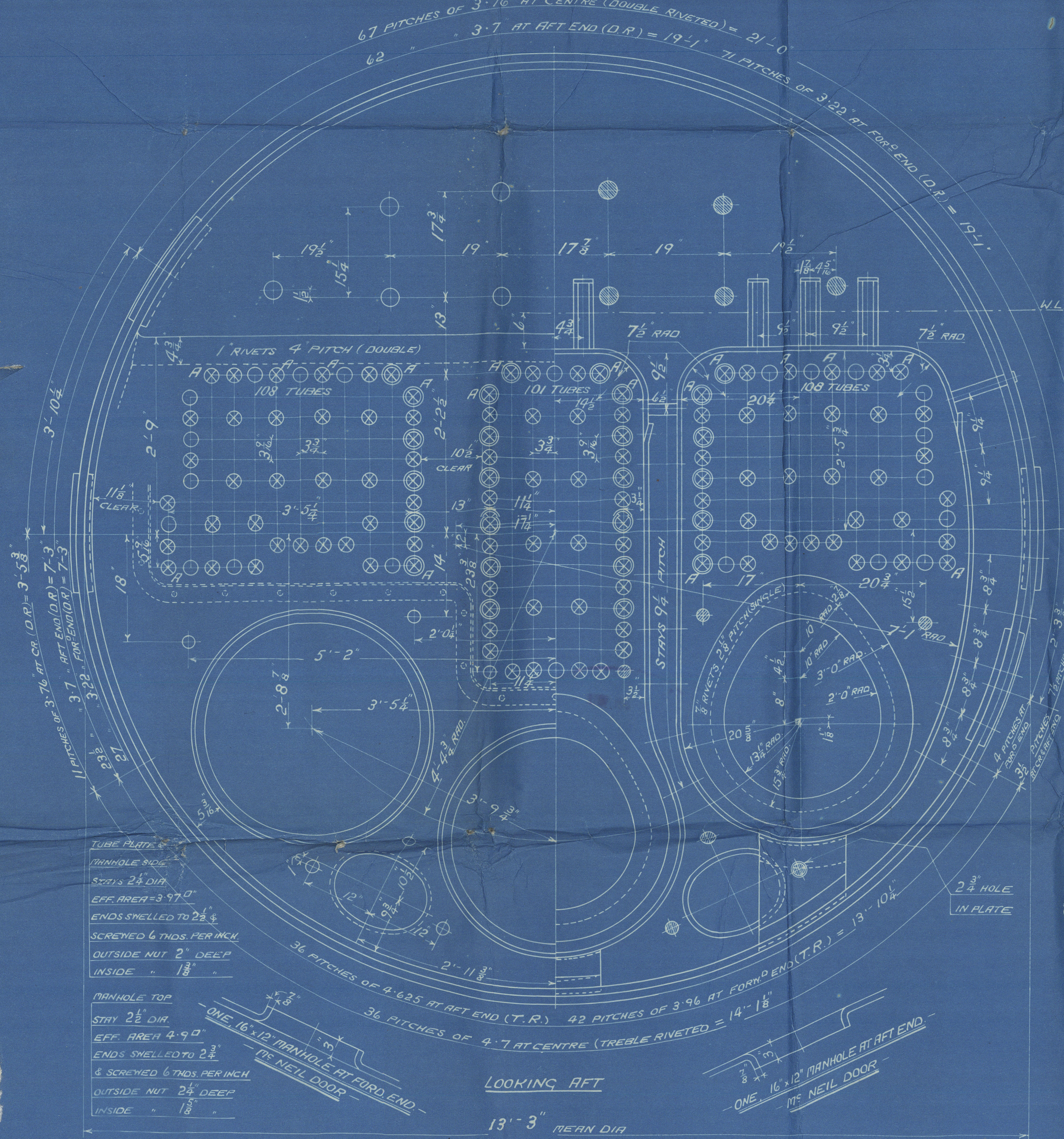


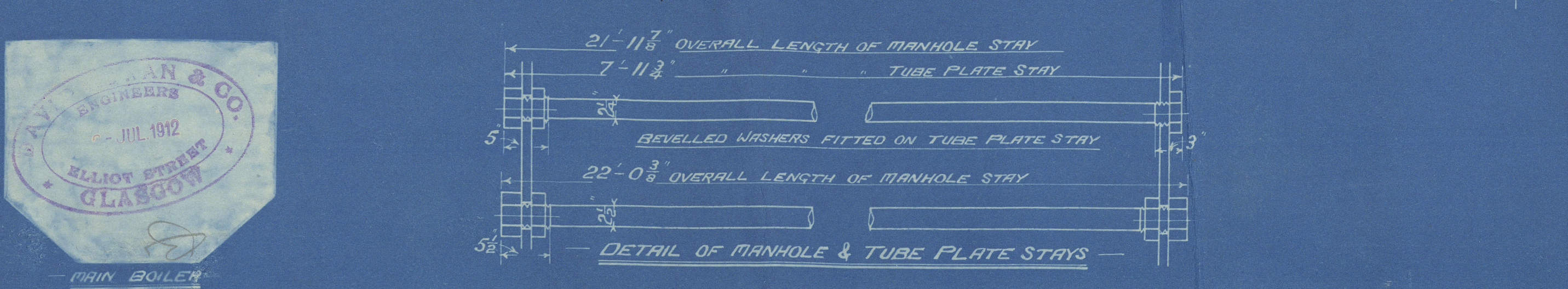
SURFACES	ONE BOILER 7 BOILERS
TUBES	3132 21524
FIREBOX TOPS & SIDES	240 1680
BACKS	117 819
TUBE PLATES	80 560
FURNACES	243 1701
TOTAL HEATING SURFACE	3812 26684
GRATE AREA (5-6 BARS)	99 693
TUBE AREA	147 1029
WATER	250 1750
STEAM SPACE	635 4445
GRATE AREA HEATING SURFACE	1385
TUBE	1316
AREA	6791
WATER	1253
STEAM SPACE	1642
% BOILER ABOVE FIREBOX	325
HEIGHT OF WATER	37 TONS 259 TONS



LIMITS OF TENSILE STRENGTH & MATERIAL	
SHELL, BUT STRAPS & GIRDERS	28 TO 32 TONS
OTHER PLATES	26 TO 30
FURNACES	26 TO 30
MAIN STAYS	28 TO 32
SCREWED STAYS	26 TO 30
RIVET BARS	26 TO 30



FIREBOX STAYS - STEEL		
POSITION	DIA	EFF. AREA
FIREBOX BACK	1 3/8	2.070
TOP & SIDES	1 3/8	2.395



MAIN BOILER  
7 OFF  
CONTS NOS 597/8 (TWIN SCREW)  
WORKING PRESSURE = 220 LBS PER SQUARE INCH  
TO PASS LLOYDS & AUSTRIAN VERITAS SURVEYS  
SCALE, ONE INCH = ONE FOOT

ALL STAYS SCREWED THRO' BOTH PLATES. NOT FITTED AT EACH END EXCEPT ON STAYS FROM WING FIREBOX TO SHELL WHICH PROJECT 8\"/>





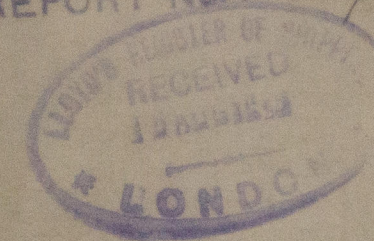
David Rowan & Co.

No 59718

Main Boilers.

Please return  
to Glasgow

GLASGOW REPORT No. 36169



of Malancha

Shs Rpt No 37654

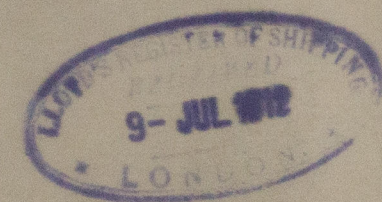
GLASGOW REPORT No 36162

No 36162

of machado.

Grk 17350.

W600-0080



© 2020

Lloyd's Register  
Foundation