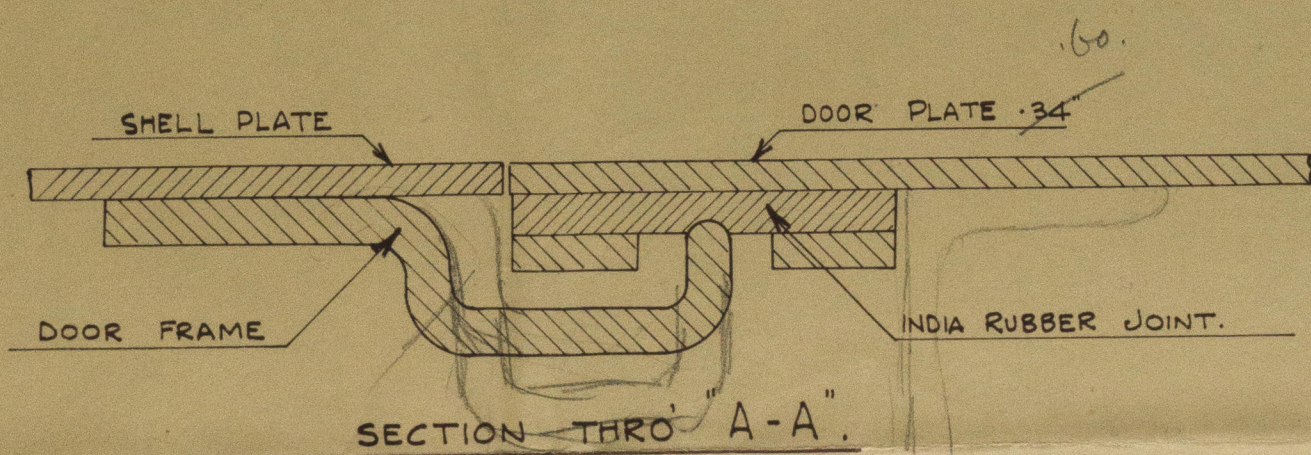
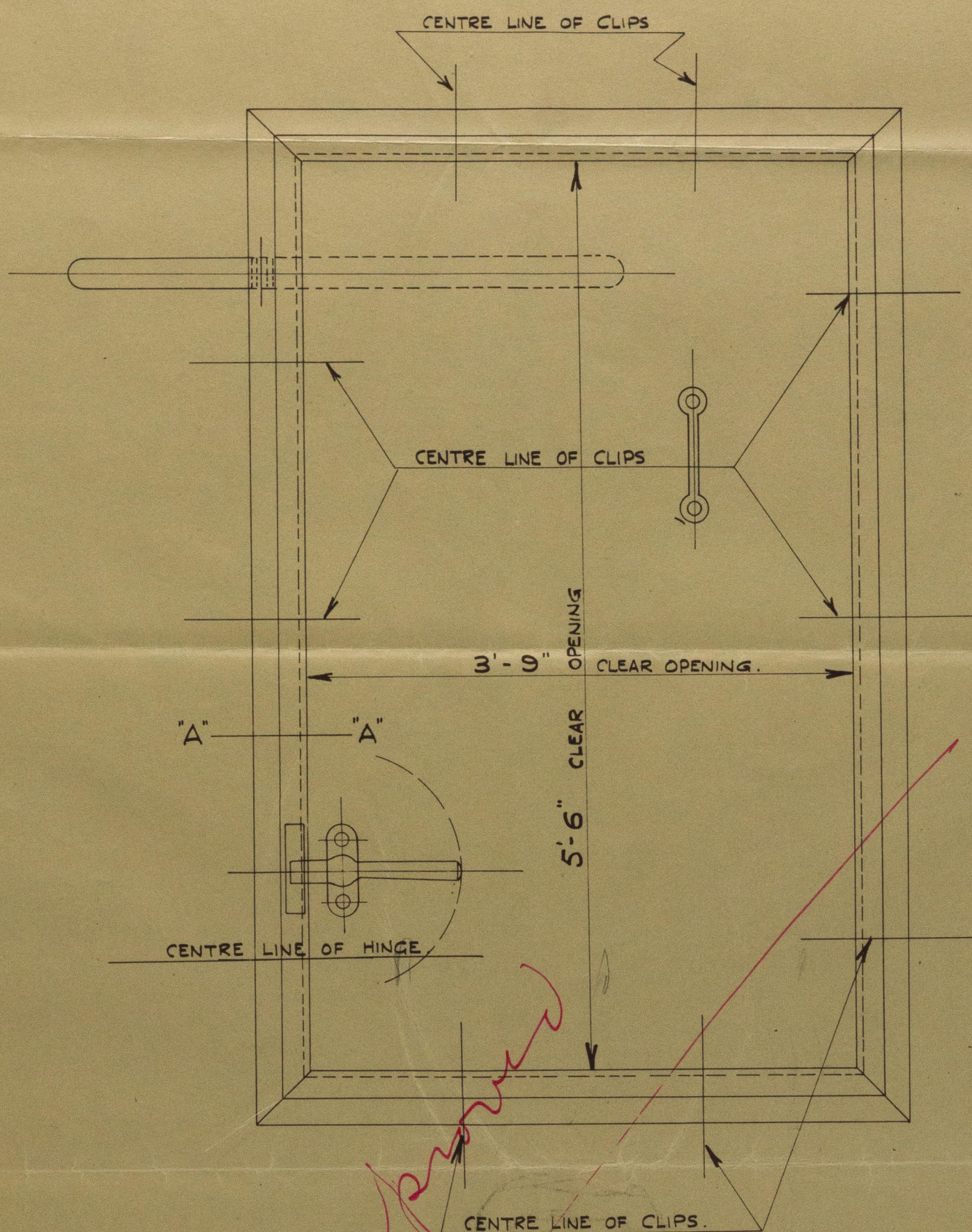


"NARDANA"

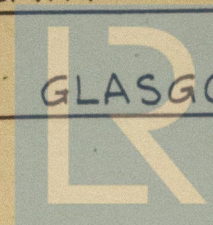
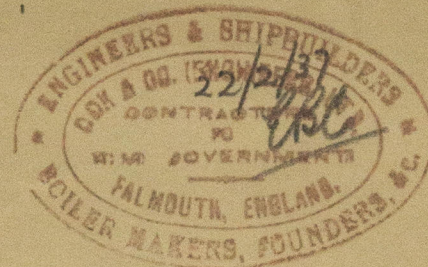
PROPOSED EMBARKATION DOORS. (NOT TO SCALE)

NOS 2 & 4 SHELTER TWIN DKS.



HINGED W.T. DOOR FOR SHIP'S SIDE. CLEAR OPENING 5'-6" x 3'-9".

MECHANS LTD. SCOTSTOUN IRONWORKS, GLASGOW.



© 2021 Lloyd's Register Foundation

W61-0022

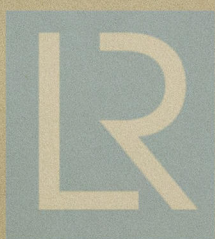
S. S. Nardana

Proposed Embarkation

Wons in No. 2+4

Shelter Live Decks.

W61-0022



© 2021

Lloyd's Register
Foundation