

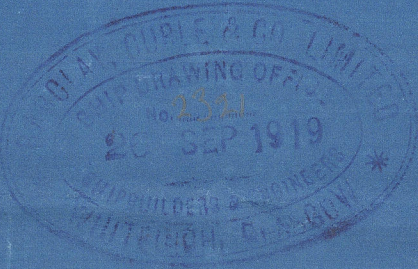
MIDSHIP SECTION

Nº 565 T.S.S. "NARDANA"

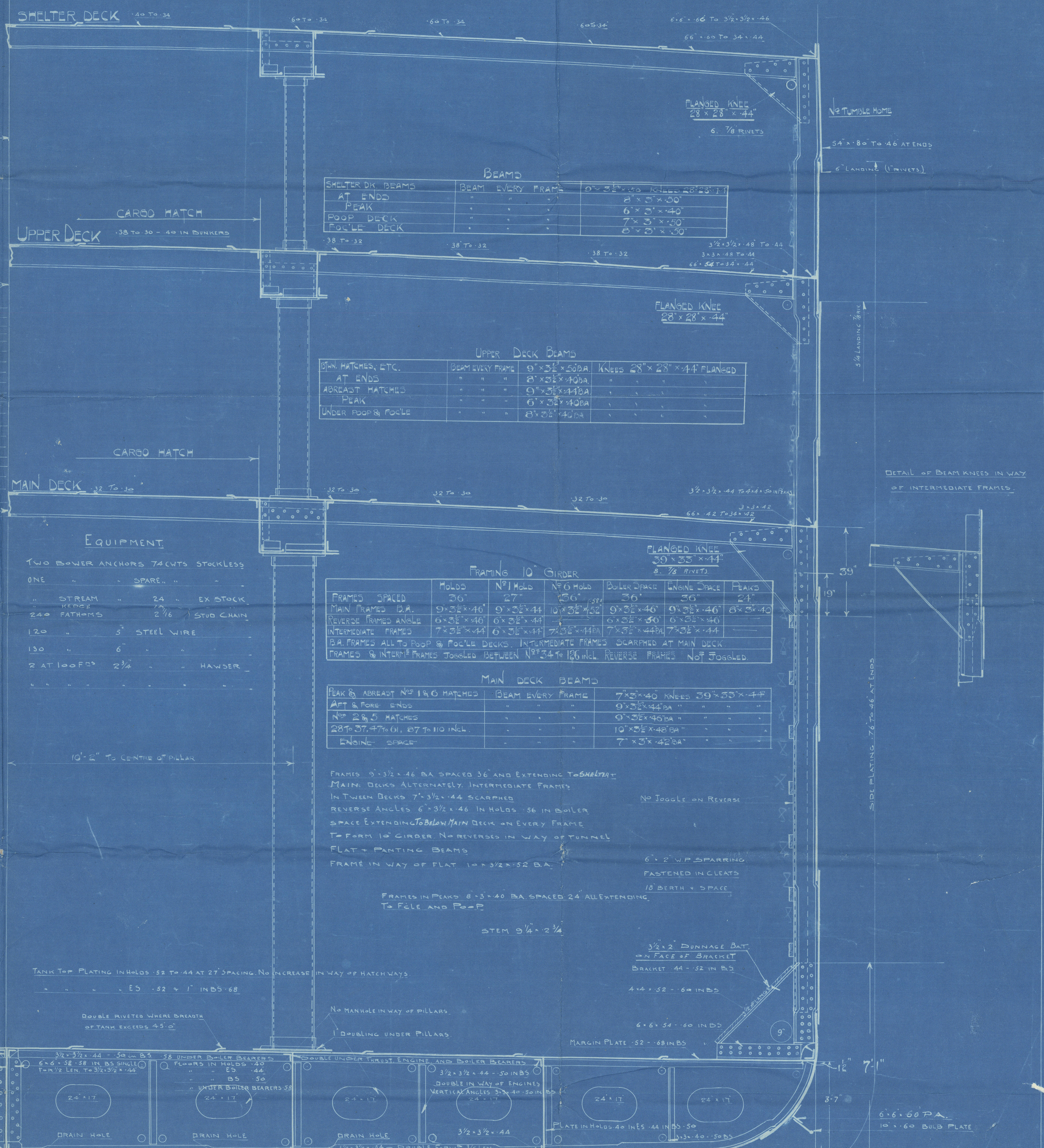
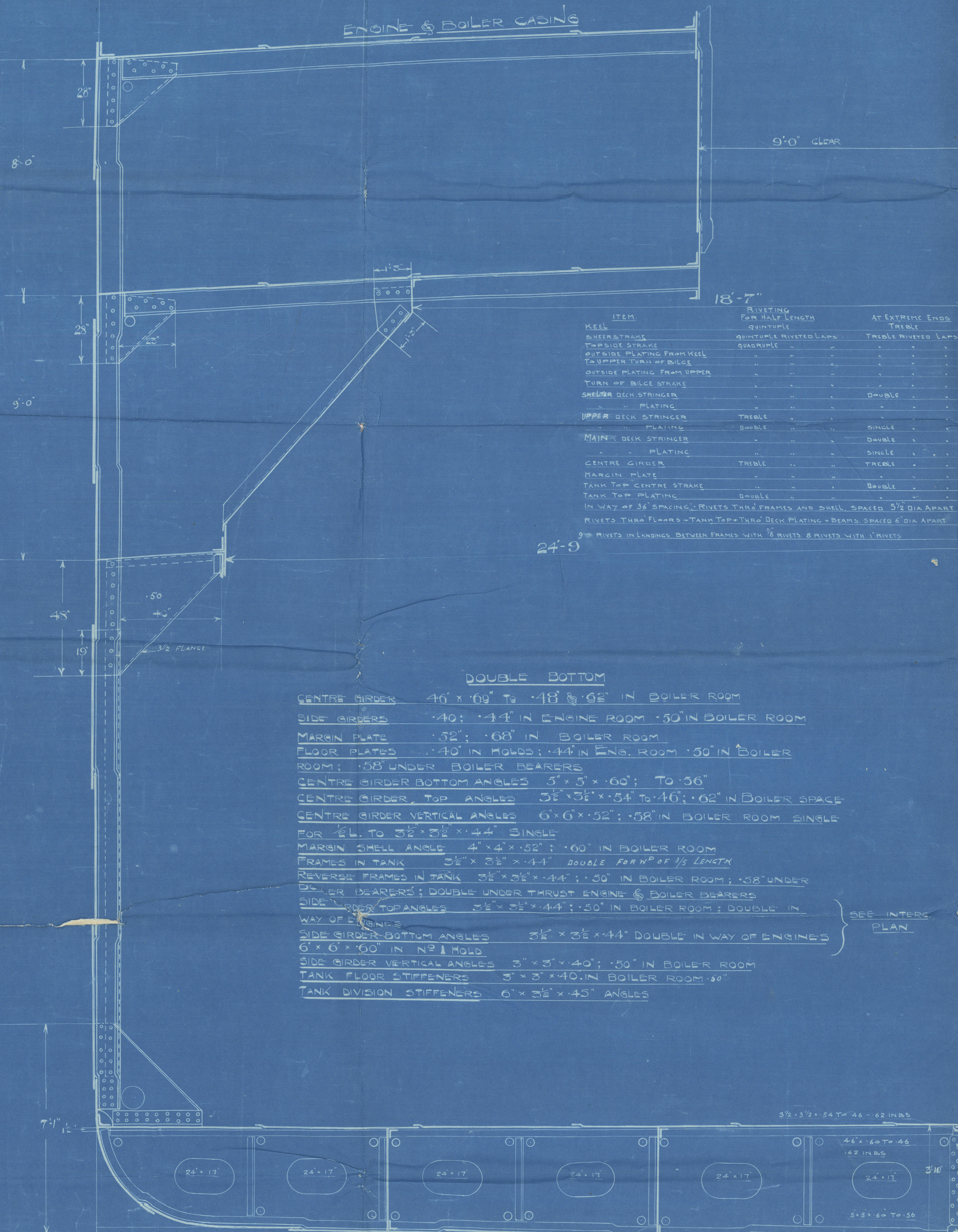
DIM: 450'-0" x 58'-0" M² x 40'-0" M¹⁰

CLASS BRITISH CORPORATION LLOYD'S 100 A1

SCALE 2" = 1 FOOT



FORECASTLE SIDE PLATING - 40	PEAK SIDE PLATING - 40
STRINGER 34 x 40	STRINGER 34 x 40
DECK PLATING - 30	DECK PLATING - 30
STRINGER ANGLE 3/2 x 3/2 x 40	STRINGER ANGLE 3/2 x 3/2 x 40
BEAMS 8 x 31 x 60 EVERY FRAME	BEAMS 7 x 31 x 60 BA EVERY FR
9 x 3/2 x 50 BA IN WAY OF VINDLAYS	KNEES 22 x 38 PLAIN 5/8 RIVETS
KNEES 20 x 44 WITH 2 1/2 FLANGE 5/8 RIVETS	



Mr Gibbs
Rogers

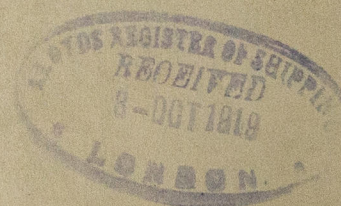


W. H. & A. Westminster

Barclay Curle & Co.
No 565.

TSS "NARDANA"

GLASGOW REPORT No. 39164.



W61-0089



© 2021

Lloyd's Register
Foundation