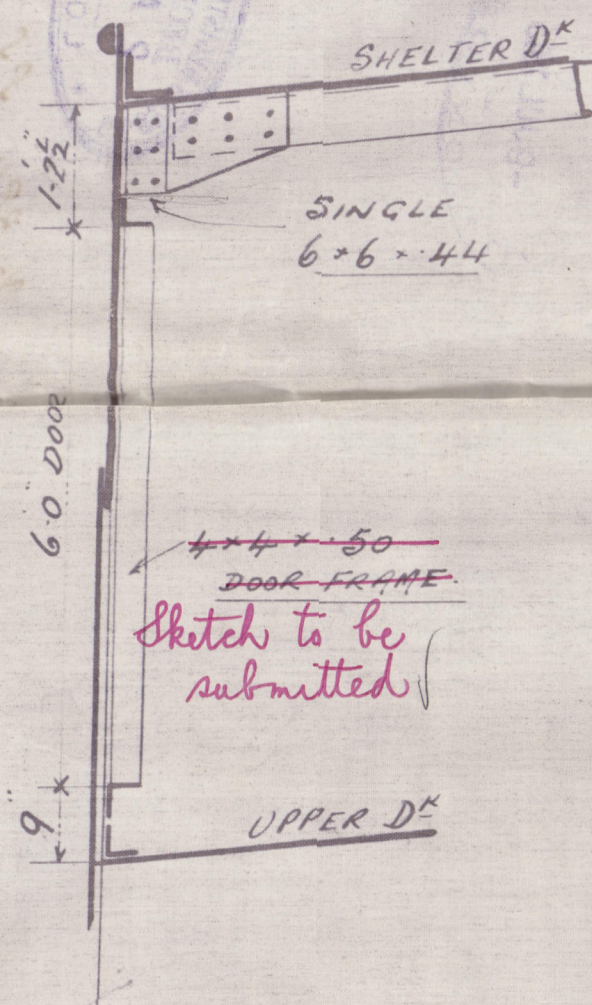


3.6.13  
9.7.13  
5.8.13  
18.10.13  
12.11.13

SKETCH SHOWING BEAM  
KNEE CONNECTION IN  
WAY OF DOOR FRAME.



N. 62 3/4 x 70 to 46.  
BUTTS QUAD OVERLAPS WITH  
14 RIVETS, 1 1/4" OVERLAPS FOR  
1/2 LENGTH TO TREBLE AT ENDS.

M. 62 3/4 x 66 to 46.  
BUTTS QUADRUPE WITH  
7/8 RIVETING + 12 OVERLAPS  
TO TREBLE AT ENDS.

L. 62 3/4 x 64 to 46.  
BUTTS TREBLE OVERLAPS.

K. 62 3/4 x 64 to 46.  
BUTTS TREBLE OVERLAPS.

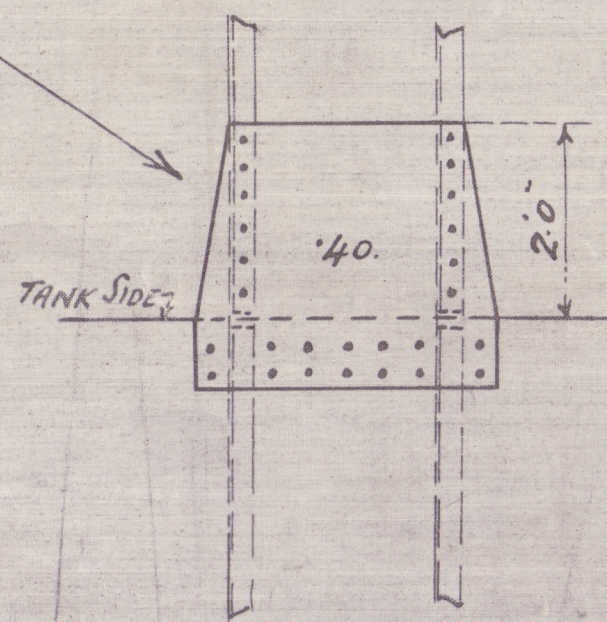
J. 62 3/4 x 64 to 46.  
BUTTS TREBLE OVERLAPS.

H. 62 3/4 x 64 to 46.  
BUTTS TREBLE OVERLAPS.

G. 62 3/4 x 64 to 46.  
BUTTS TREBLE OVERLAPS.

F. 62 3/4 x 64 to 46.  
BUTTS TREBLE OVERLAPS.

CONNECTION OF OUTSIDE BRACKETS  
TO MARGIN PLATE TO BE BY SINGLE 6x6x50x48  
WITH 12 7/8 RIVETS EACH WAY THROUGHOUT.  
GUSSETS FROM COLLISION BULKHEAD TO ENGINE ROOM BULKHEAD  
+ AS SHOWN ON PLANS + TO SKETCH.



# MIDSHIP SECTION.

SCALE 1/2" = ONE FOOT.

NOS. 384 + 385.

DIMENSIONS - 424.75 x 56.0 MLO x 30.7 1/2 D.MLO.

DECK PLATING .40 TO .36. INCREASED AT OPENINGS AS PER DECK PLAN  
+ TO BE FURTHER INCREASED 1/20 TO OWNERS REQUIREMENTS.  
BUTTS DOUBLE FOR 1/2 LENGTH. SINGLE AT ENDS. SEAMS ALL SINGLE.

STRINGER 57 x 56 TO 36 x 44.  
BUTTS TREBLE OVERLAPS.  
STRINGER ANGLE 5 x 5 x 62 TO 3 1/2 x 3 1/2 x 44.

RIVETING OF BEAMS TO PLATING 7 DIARS APART.  
THROUGH BEAMS 7 x 3 x 26 B.A. 26" APART WHERE SUPPORTED BY 3 ROWS OF PILLARS.  
HALF " 7 x 3 x 26 " " IN WAY OF HATCHES.  
" 8 x 3 x 26 " " IN WAY OF MACHINERY SPACE.  
STRONG " 9 x 3 x 66 " ACROSS ENGINE SPACE, SPACED AS PER PROFILE  
WITH KNEES 28 x 54.

DECK PLATING RULE .38 TO .30. TO BE .38 TO .35 (OWNERS)  
INCREASED IN WAY OF OPENINGS. BUTTS DOUBLE FOR  
1/2 LENGTH. SINGLE AT ENDS.  
SINGLE 2 1/2 SEAMS THROUGHOUT - 3/4 RIVETS.

STRINGER 57 x 48 TO 36 x 44.  
BUTTS TREBLE OVERLAPS.  
STRINGER ANGLES 3 1/2 x 3 1/2 x 48 TO 44.  
INSIDE BAR KEPT 2" INSIDE FRAMES.

RIVETING OF BEAMS TO PLATING 7 DIARS APART.  
THROUGH BEAMS 7 x 3 x 26 B.A. 26" APART WHERE SUPPORTED BY 3 ROWS OF PILLARS.  
HALF " 7 x 3 x 26 " " IN WAY OF HATCHES.  
" 8 x 3 x 26 " " IN MACHINERY SPACE.  
STRONG BEAMS ACROSS ENGINE SPACE AS PER PROFILE.

DECK PLATING .30 TO .25 (OWNERS)  
BUTTS DOUBLE FOR 1/2 LENGTH SINGLE AT ENDS.  
SINGLE 2 1/2 SEAMS THROUGHOUT - 3/4 RIVETS.

STRINGER 58 x 44 TO 36 x 44.  
BUTTS TREBLE OVERLAPS.  
STRINGER ANGLES 3 1/2 x 3 1/2 x 48 TO 44.  
INSIDE BAR KEPT 2" INSIDE FRAMES.

RIVETING OF BEAMS TO PLATING 7 DIARS APART.  
THROUGH BEAMS CLEAR OF PEAKS 8 x 3 x 40 B.A. 26" APART. SUPPORTED BY 3 ROWS OF PILLARS.  
" " " IN PEAKS 7 x 3 x 42 B.A. 24 " KNEES 24 x 46.

HALF BEAMS IN WAY OF ENGINE CASING 8 1/2 x 35 x 48 B.A. 26" APART.  
STRONG BEAMS ACROSS ENGINE CASING AS PER PROFILE.

SIDE STRINGER.  
FACE BAR 7 x 3 1/2 x 50.0  
PLATE .44.  
SHELL LUGS 3 1/2 x 3 1/2 x 44.  
FRAME LUGS 4 x 3 1/2 x 44.

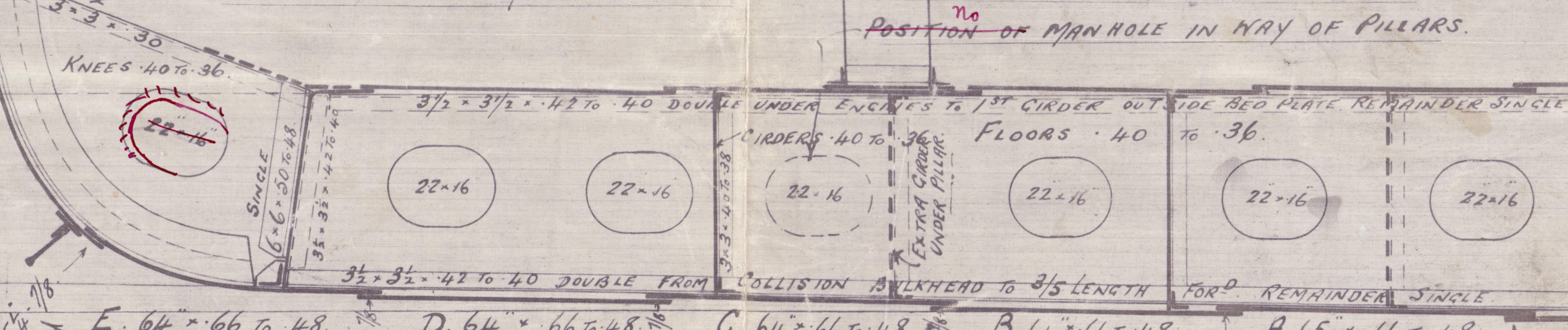
FRAMES IN HOLDS + ENGINE ROOM. 10 x 3 1/2 x 52 B.A. 26" APART. RIVETS 7 DIARS. (EXCEPT DEEP TANK WHERE 5 1/2 DIARS)  
FRAMES IN PEAKS 7 1/2 x 3 1/2 x 44 B.A. 24" APART. RIVETS 5 1/2 DIARS.  
(PROPELLER POST 10 1/2 x 8.  
RUDDER POST 9 x 8.  
STEM BAR - 10 1/2 x 2 3/4.  
RUDDER PLAN TO BE SUBMITTED.

MARGIN PLATE RULE 35 x 48 x 58 IN BULK SPACE.  
BUTTS TREBLE OVERLAPS.  
MARGIN ANGLE 4 x 4 x 48.

TANK TOP IN HOLDS - .40 TO .36.  
" " " ENGINE SPACE .50.  
" BUTTS DOUBLE FOR 1/2 LENGTH. SINGLE AT ENDS.

CENING LAID THROUGHOUT HOLDS.  
POSITION OF MANHOLE IN WAY OF PILLARS.

HEIGHT OF BRACKETS MAINTAINED FORWARD.



E. 64 x 66 TO 48. D. 64 x 66 TO 48. C. 64 x 66 TO 48. B. 64 x 66 TO 48. A. 65 x 66 TO 48.  
BUTTS QUADRUPE FOR 1/2 LENGTH. TREBLE AT ENDS.  
A. B. C STRIKES TO MAINTAIN THICKNESS TO COLLISION BULKHEAD.  
FLOORS CARRIED UP + DOUBLE ANGLES -  
FITTED IN WAY OF BULKHEADS.  
RIDERS 15 x 70.

MARGIN PLATE  
35 x 58.

SECTION IN WAY OF BOILER WELL.

SHELTER DECK.  
3 1/2 x 3 1/2 x 44.  
PILLARS 2 1/2 DIA. 52" APART.

UPPER DECK.  
3 1/2 x 3 1/2 x 44.  
PILLARS 2 3/4 DIA. 52" APART.

MAIN DECK.  
3 1/2 x 3 1/2 x 46.

NUMBERS.  
BEAM MOULDED --- 56.0  
DEPTH MOULDED --- 30.625  
86.625 TRANSVERSE NO.  
LENGTH --- 424.75  
36790 LONGITUDINAL NO.  
DEPTHS TO LENGTH 10.45 TO SHELTER DECK.  
DEPTH MOULDED 30.625  
DOUBLE BOTTOM --- 3.666  
TWEEN DECKS --- 9.0 12.666  
d - 17.969

ARRANGEMENT OF WIDE SPACED QUARTER PILLARS  
+ GIRDERS AS PER SEPARATE PLAN.

Equipment as per Rule

CENTRE PLATE RULE 44 x 52 TO 42.  
OR 60 x 50 TO 40.  
BUTTS TREBLE OVERLAPS WHERE OVER 4x  
REMAINDER SINGLE.  
Equipment Name  
Longitudinal No. = 36790  
Shear 4x = 424.75 x 80 x 75 = 2548 1/2  
Propylene 4x = 138.8 x 50 = 552  
Main Prop. 35 x 80 x 50 = 140 88 1/4  
Forward Hull 40 x 80 x 50 = 160  
40199

52 x 3 1/2 x 52 TO 48 (NO STAMP ANGLES)  
CENTRE KEELSON 44 x 52 TO 42.  
BUTTS TREBLE OVERLAPS  
LUGS 6x6x50 FOR 1/2 LENGTH + WITH 11 RIVETS.  
3 1/2 x 3 1/2 x 40 AT ENDS WITH 7 RIVETS.  
4 1/2 x 4 1/2 x 60 TO 56 (NO STAMP ANGLES)

3.6.13

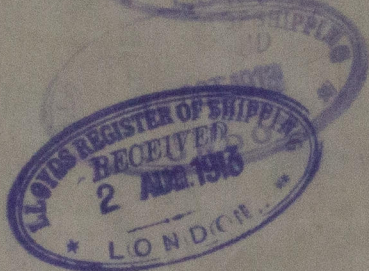
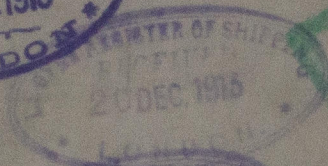
for SHORT BROTHERS LTD.  
SHIPBUILDERS.  
SUNDERLAND.

Edgar Woodward



Midship Section

S/ 384 & 5.



RETAIN

No. 384. S.S. "Moorish Prince"  
P.O. Report No. 26112

No. 385. S.S. "British Prince"  
P.O. Report No. 26199

W 619-0217



© 2020

Lloyd's Register  
Foundation