

COCHRAN PATENT VERTICAL MULTITUBULAR BOILER.

PLAIN TUBE HOLES BORED $\frac{1}{16}$ " DIA. IN BACK TUBE PLATE. PLAIN TUBE HOLES BORED $\frac{1}{16}$ " DIA. IN FRONT TUBE PLATE.

HORIZONTAL FLUE TUBES.

STAY TUBE HOLES SCREWED $\frac{1}{16}$ " DIA. IN BACK TUBE PLATE. STAY TUBE HOLES SCREWED $\frac{1}{16}$ " DIA. IN FRONT TUBE PLATE.

11-THREADS PER INCH. SCALE $\frac{1}{2}$ " = 1 FOOT.

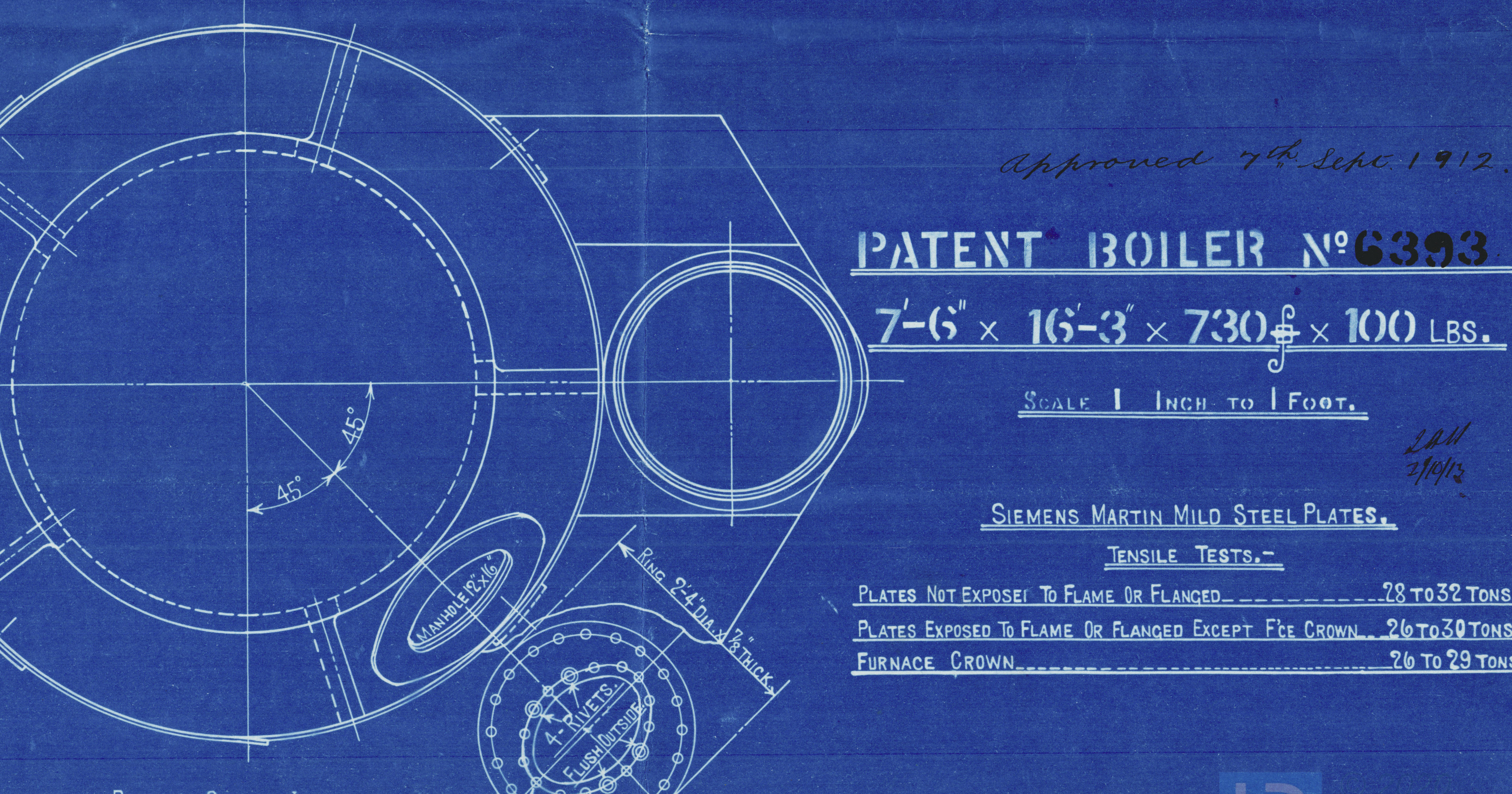
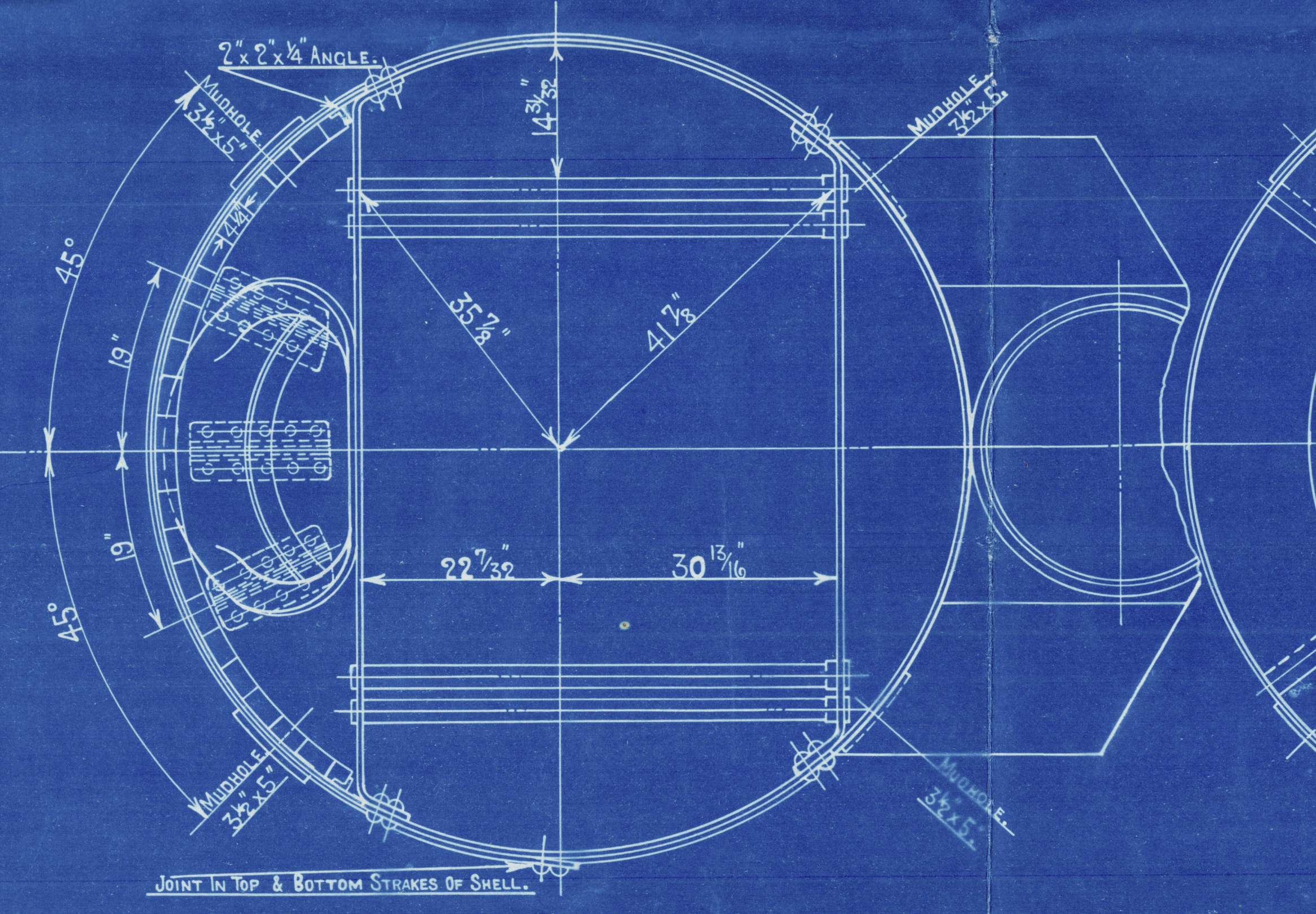
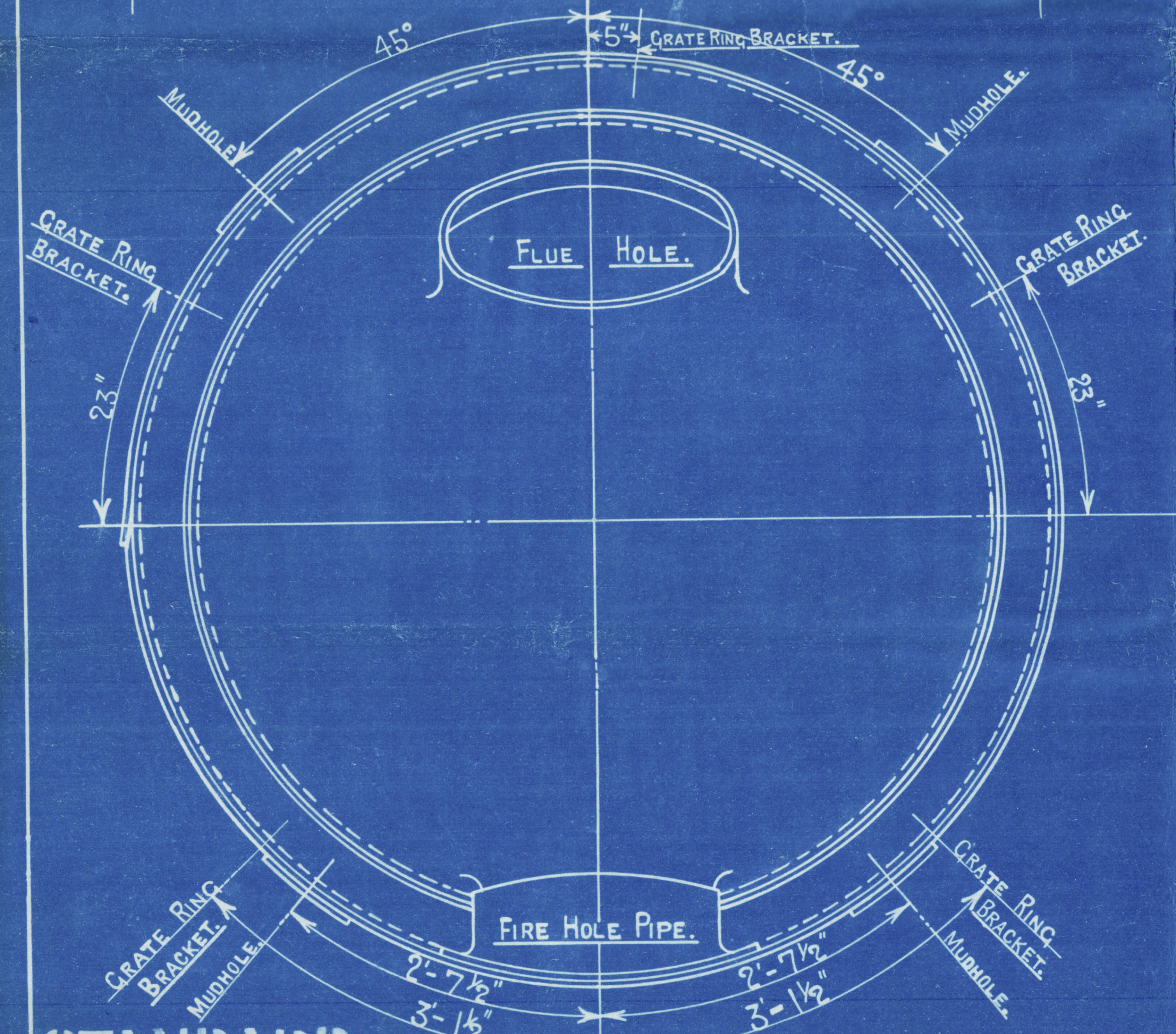
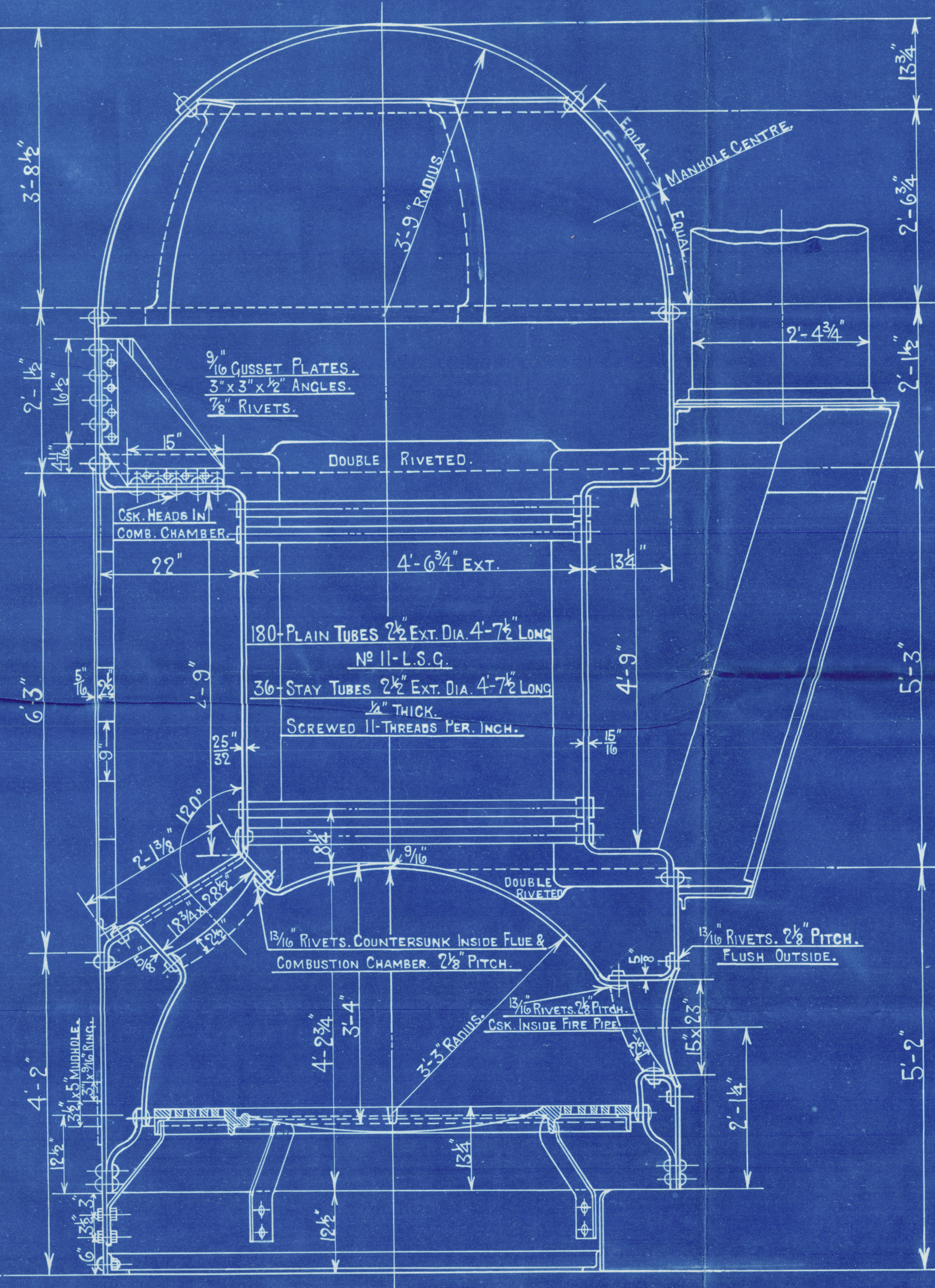
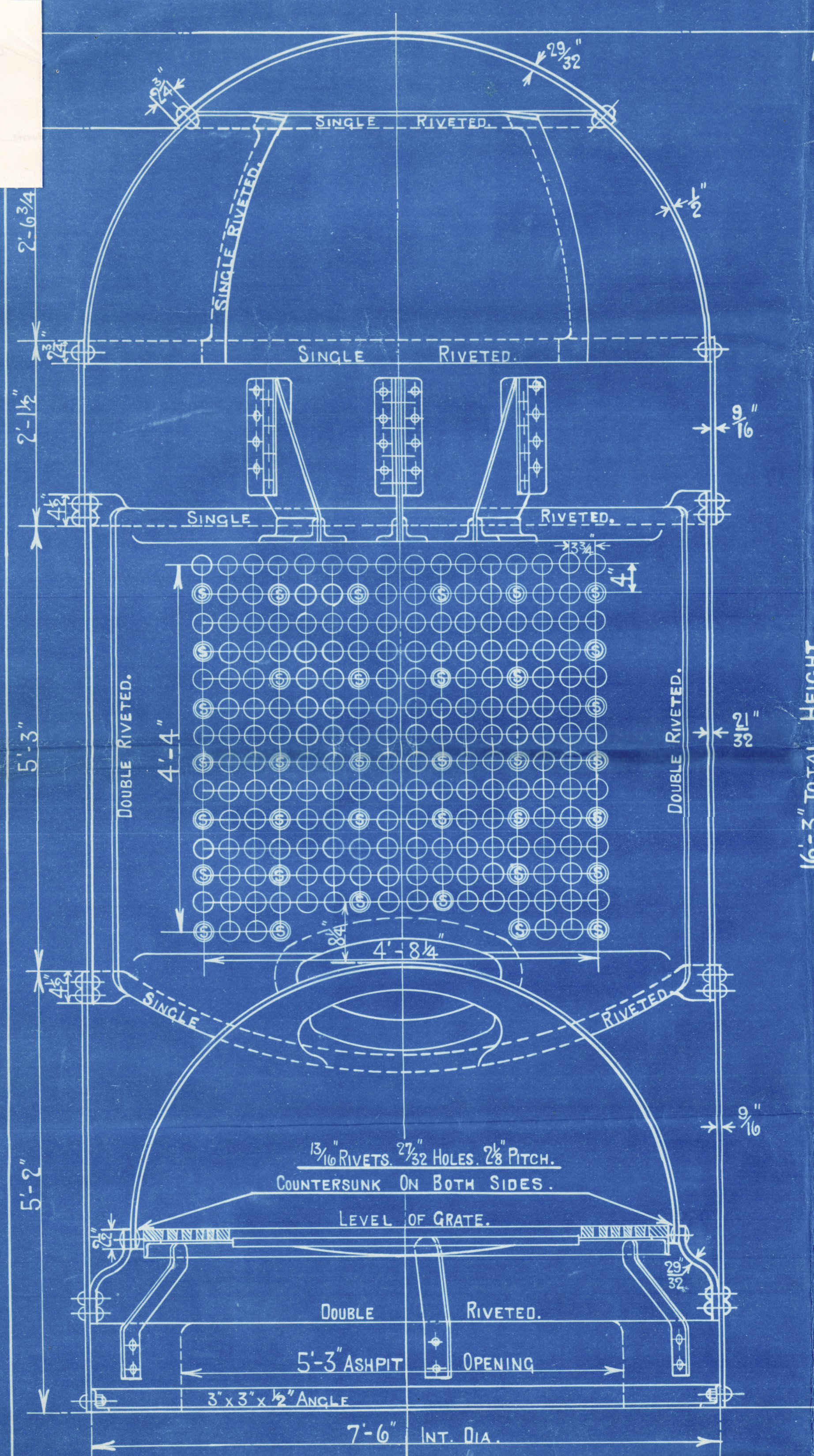
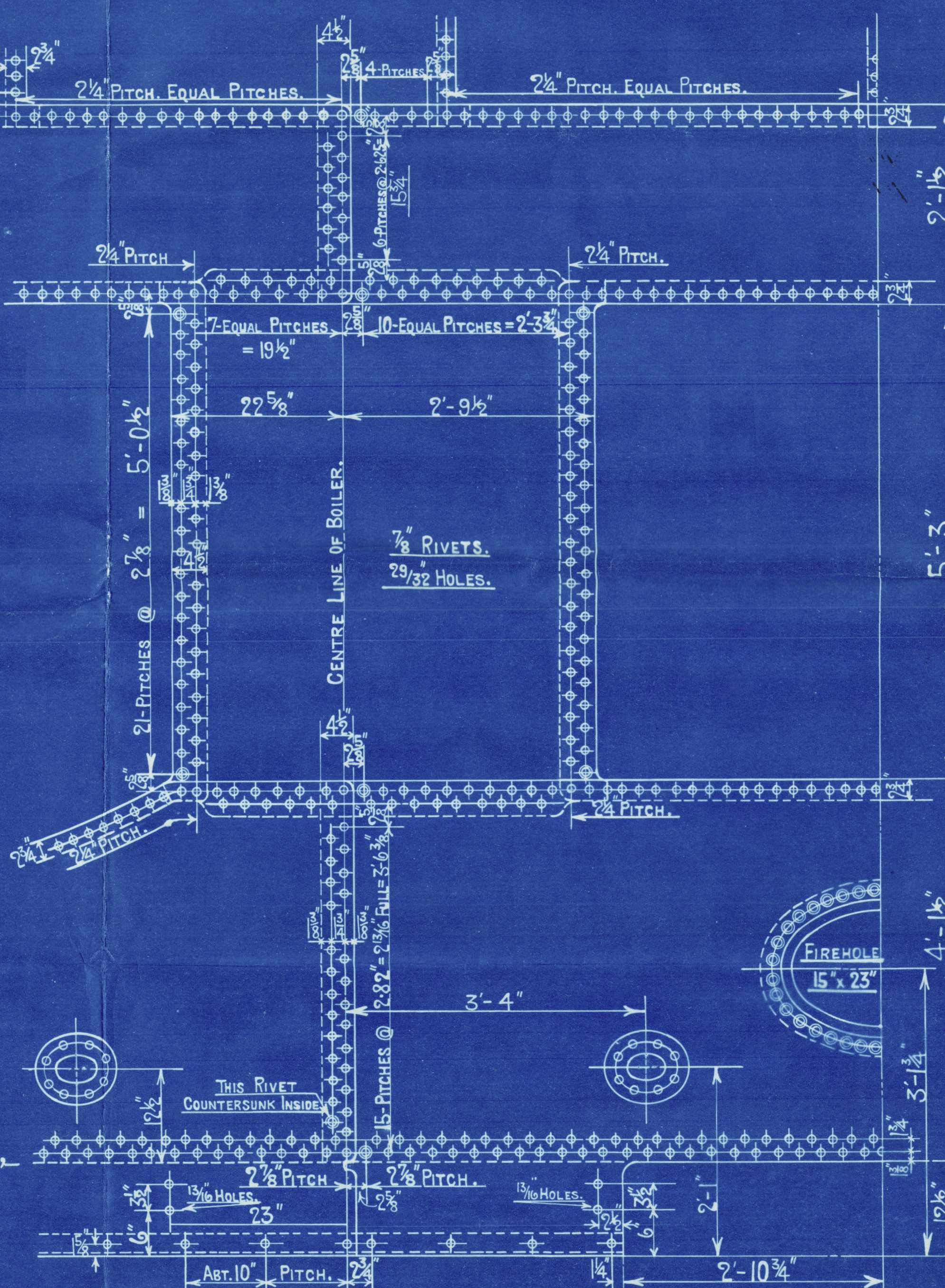
HEATING SURFACE.		
TUBES.	626 SQ. FT.	
PLATE.	104 "	
TOTAL.	730 "	
GRATE AREA.	31.5 "	

LLOYDS.		
PLATE.	$\frac{1}{16}$ " 25 x 100	= 65.2%
RIVETS.	$\frac{1}{4}$ " 645 x 85	= 69.1%
FRONT TUBE PLATE.	$\frac{1}{16}$ " 4 x 25375	= 35.1%
BACK TUBE PLATE.	$\frac{1}{16}$ " 4 x 25	= 37.5%
SHELL.	$\frac{1}{16}$ " 20.5 (9-2) 65	= 103.1 LBS.
FRONT TUBE PLATE.	$\frac{1}{16}$ " 20.5 (16-2) 351	= 1038 LBS.
BACK TUBE PLATE.	$\frac{1}{16}$ " 20.5 (16-2) 37.5	= 104.2 LBS.
FURNACE.	$\frac{1}{16}$ " 150 x (9-2)	= 112.1 LBS.
GRATE RING.	$\frac{1}{16}$ " 315 x 15	= 11.1 LBS.

BUREAU VERITAS.		
PLATE.	$\frac{1}{16}$ " 25 x 100	= 65.2%
RIVETS.	$\frac{1}{4}$ " 645 x 85	= 72.8%
FRONT TUBE PLATE.	$\frac{1}{16}$ " 4 x 25375	= 35.1%
BACK TUBE PLATE.	$\frac{1}{16}$ " 4 x 25	= 37.5%
SHELL.	$\frac{1}{16}$ " 28 x 20.5 (9-2) 65	= 104.1 LBS.
FRONT TUBE PLATE.	$\frac{1}{16}$ " 28 x 20.5 (16-2) 351	= 1038 LBS.
BACK TUBE PLATE.	$\frac{1}{16}$ " 28 x 20.5 (16-2) 37.5	= 104.2 LBS.
FURNACE.	$\frac{1}{16}$ " 1400 x 9	= 107.8 LBS.

BUREAU VERITAS.		
SHELL.	$\frac{1}{16}$ " 65 x 2 x 28 x 2240 (5625 - .04)	= 118.1 LBS.
RIVETS.	$\frac{1}{4}$ " 645 x 85	= 1038 LBS.
FRONT TUBE PLATE.	$\frac{1}{16}$ " 10400 x 9275 (4-25375)	= 129.1 LBS.
BACK TUBE PLATE.	$\frac{1}{16}$ " 10400 x 781 (4-25)	= 114.9 LBS.
FURNACE.	$\frac{1}{16}$ " 600 x (9-2)	= 107.8 LBS.

COCHRAN & CO ANNAN LD.
ENGINEERS & BOILERMAKERS
ANNAN, SCOTLAND.



Approved 7th Sept. 1912.

PATENT BOILER N° 6393

7'-6" x 16'-3" x 730# x 100 LBS.

SCALE 1 INCH TO 1 FOOT.

SIEMENS MARTIN MILD STEEL PLATES.

TENSILE TESTS.

PLATES NOT EXPOSED TO FLAME OR FLANGED 28 TO 32 TONS.
PLATES EXPOSED TO FLAME OR FLANGED EXCEPT FIRE CROWN 26 TO 30 TONS.
FURNACE CROWN 26 TO 29 TONS.

DRAWING N° 9218

STANDARD.
SURVEY-LLOYDS.

COCHRAN & Co., ANNAN, Ltd.

Enclosure.

FOR

Messrs.

Lloyds

W627-6104 2/2

9218

COCHRAN & CO., ANNAN, LD.

Boiler No. 6393

Drawing No. 9218

J G Kincaid & Co.

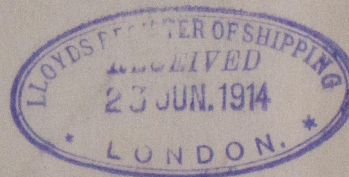
E 143 413

J. Cassis

GLASGOW REPORT No: 33345 }
Greenock Report No. 16634 }



RETURN



W627-0104 1/2



© 2020

Lloyd's Register
Foundation