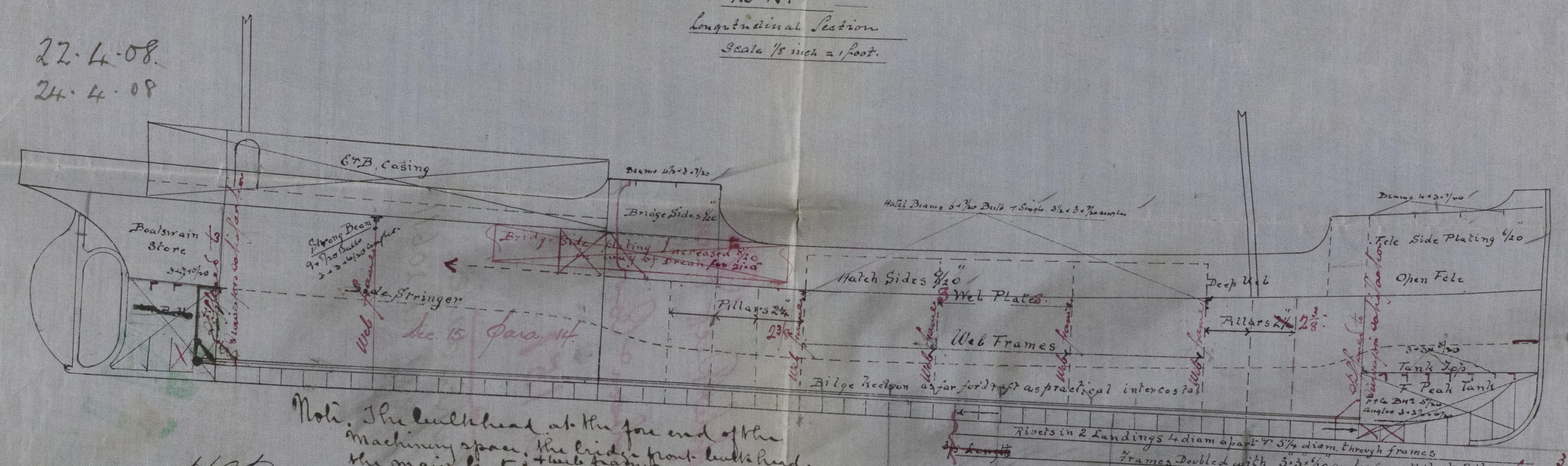


W62a-0105

No 151  
Longitudinal Section  
Scale 1/8 inch = 1 foot.

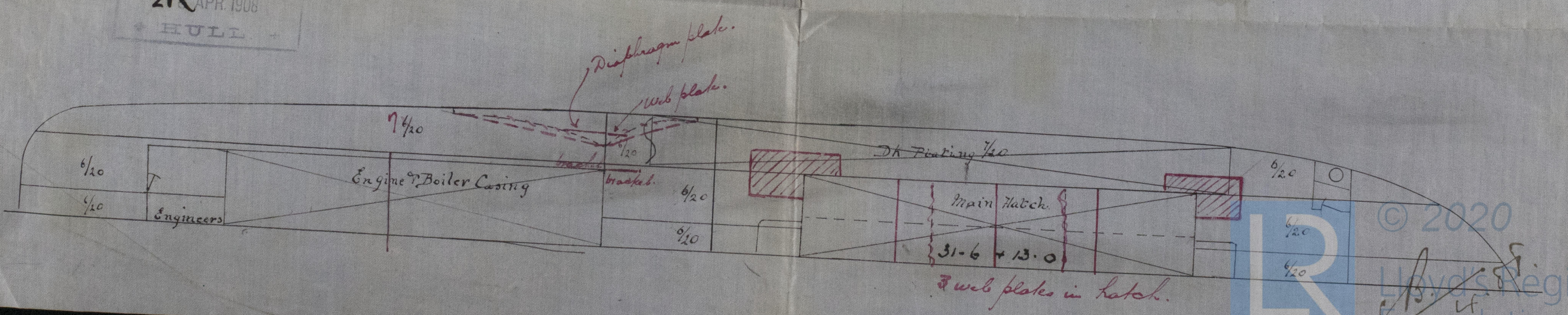
22.4.08.  
24.4.08



Note. The bulkhead at the fore end of the Machinery space, the bridge front bulkhead, the main hatchway, and the fore mast have all been moved one frame space forward of the position shown on this plan. as per.

Rebuilding throughout to Surveyor's satisfaction.

SHED  
LLOYD'S REGISTER  
OF SHIPPING  
21 APR. 1908  
HULL





- Profile & Rect Plan

J. Robson & Co

No 151

S/S Lunsdale

Hull Rpt No. 20611

© 2020

Lloyd's Register  
Foundations