

Dimensions as per Rule.

LENGTH .....	400.00
BREADTH .....	51.29
DEPTH .....	28.50

GLASS 100A.1. ☒

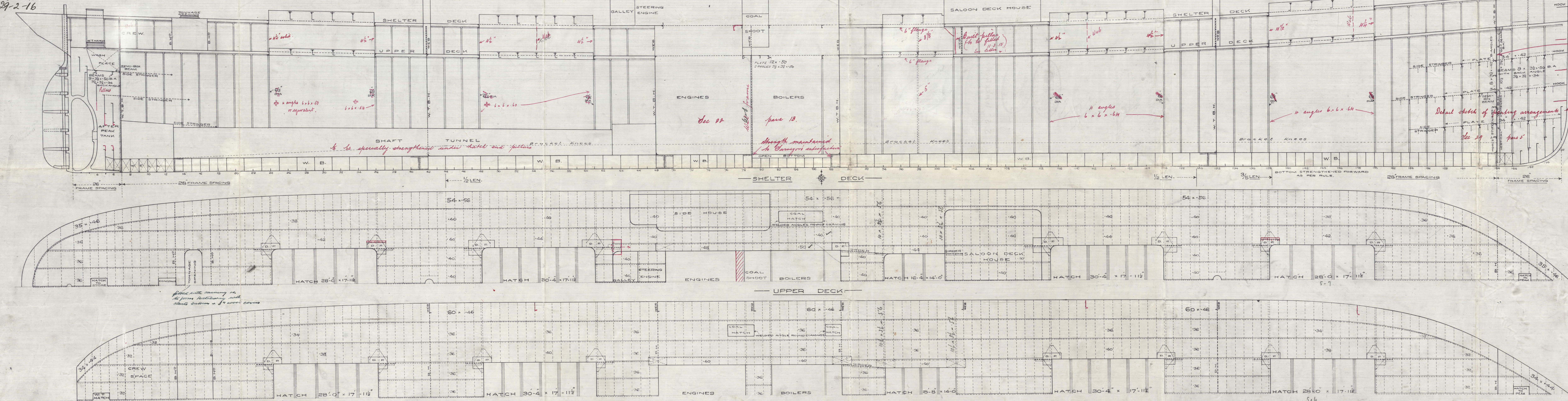
LENGTH	400.00
--------	--------

BREATH 51.29

DEPTH 39.50

CLASS 100A.1. ☒

Hatch and fellars in tween decks to have flat palm attachment at heads & heels. Hatch end fellars in holds to be of built section with brackets at heads & heels as per rule.



- Sec 19 para 1

Detail sketch of bonding arrangements to be submitted ✓

— PARTICULARS FOR FREEBOARD. —

LENGTH BETWEEN PERPENDICULARS 400'-0"  
BREADTH EXTREME 51'-6"  
DEPTH MOULDED TO UPPER DK. AT MIDDLE OF LENGTH 28'-6"  
" Q. D. L. AT BOTTOM UPPER DK. 28'-0"  
TONNAGE UPPER UPPER DK. 4366 TONS 4366  
" LOWER LOWER DK. 1111 TONS 1111  
SHELTER DECK FULL LENGTH OF VESSEL 771'-10"  
AT BOW AND AFT  
STANTLINGS CLASS 100 A.1. SPECIAL SURVEY  
AT BOW AND AFT  
ROUND OF BEAM 12"  
SHEER: AFT SIDE OF STERN POST = 4'-0"  
FORE STEM 10'-9"  
LENGTH FROM AFT = 2'-6 1/2"  
" FORE = 2'-15"  
UPPER DK. & SHELTER DK. NOT COVERED WITH WOOD

JOHN READHEAD & SONS, LD.,  
SHIPBUILDERS &C.,  
SOUTH SHIELDS.

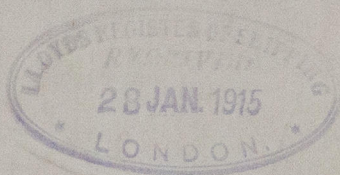
Jan.  
4.2.15



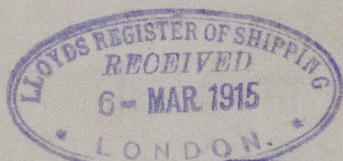
*J. Readhead & Sons Ltd*

*N<sup>o</sup> 452*

*Profile & deck plans*

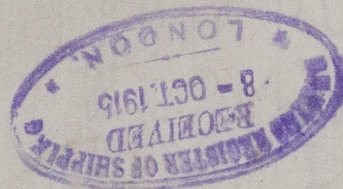
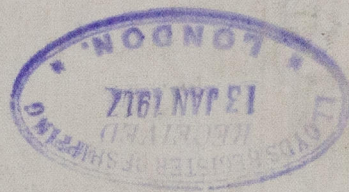


RETAIN



S. S. WARKWORTH  
NEWCASTLE ON TYNE.

Report No. 69670



© 2021

Lloyd's Register  
Foundation

N631-0077