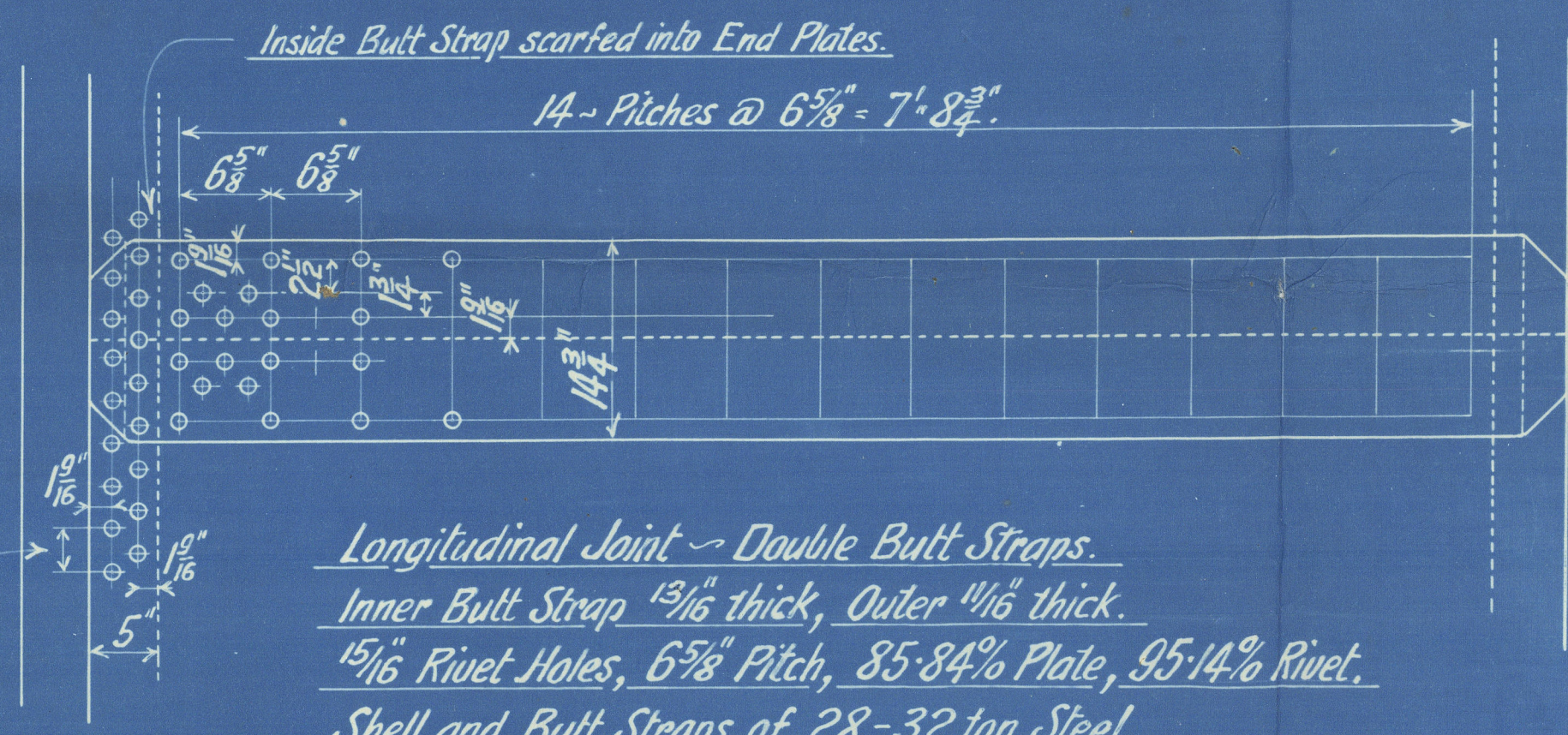
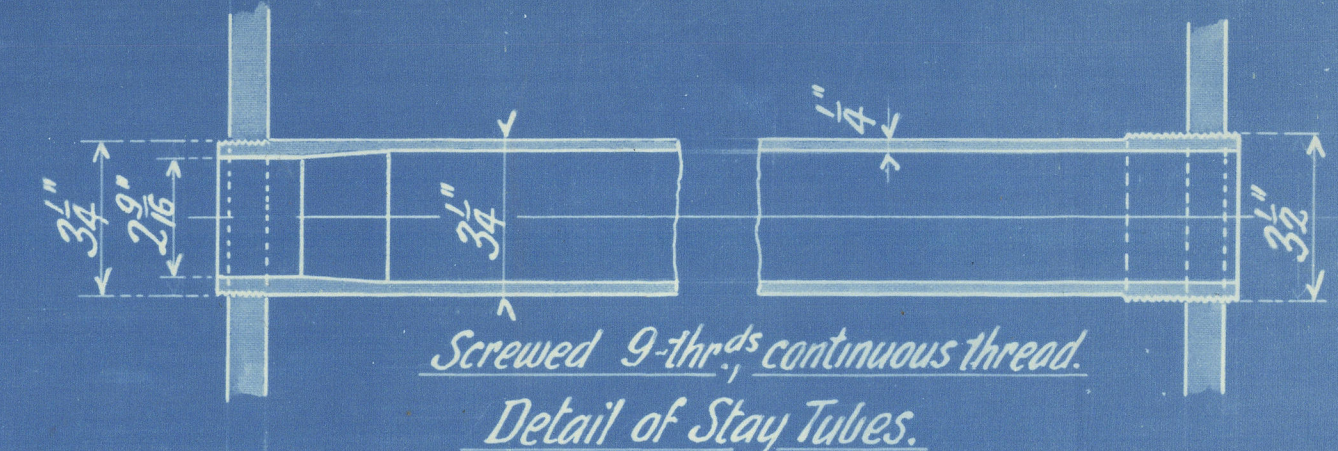


Detail of Portable Stays.
2-off, Wrot Iron.

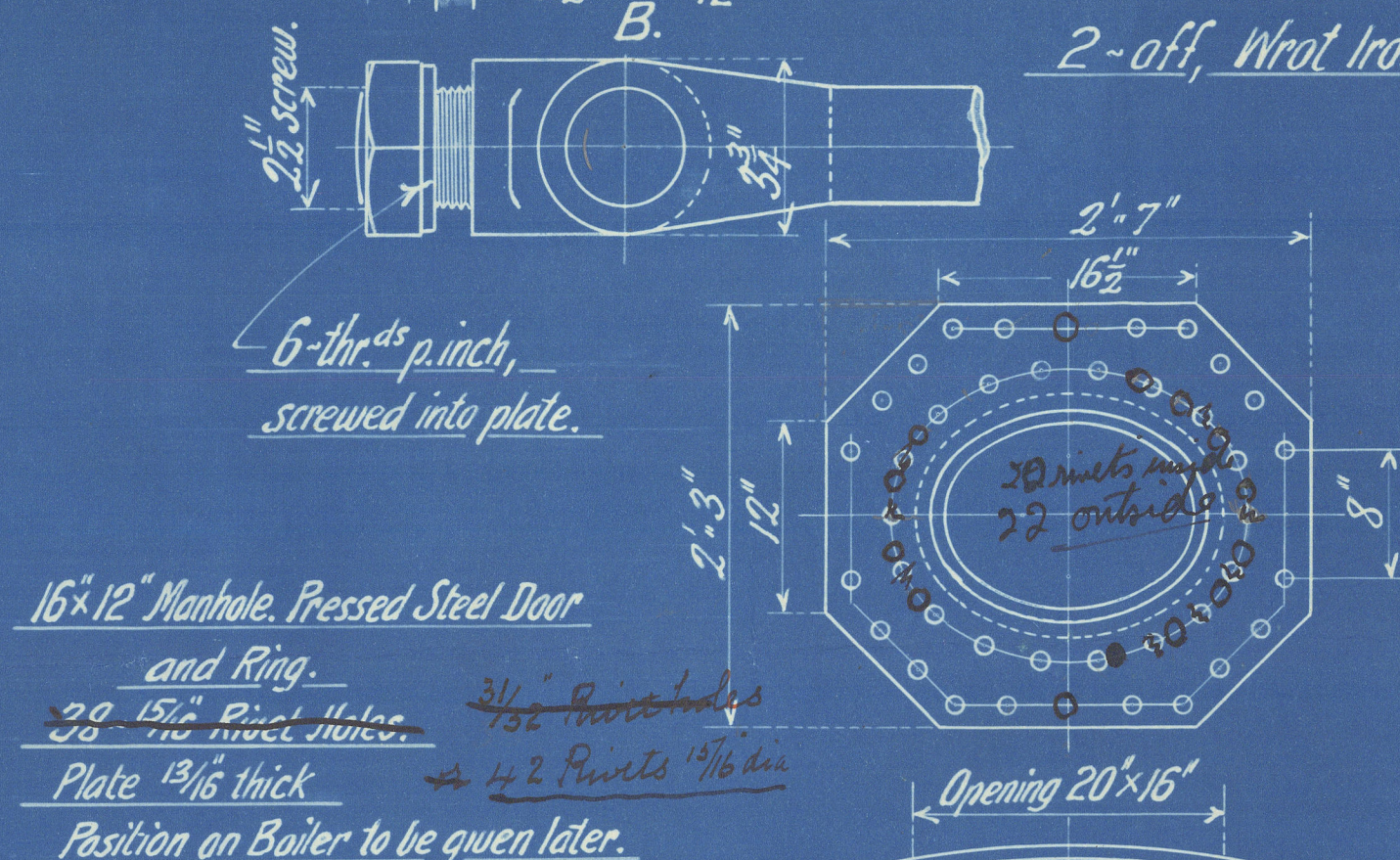


Longitudinal Joint ~ Double Butt Straps.
Inner Butt Strap $1\frac{3}{16}$ " thick, Outer $1\frac{1}{16}$ " thick.
 $1\frac{5}{16}$ " Rivet Holes, $6\frac{3}{8}$ " Pitch, 85-84% Plate, 95-14% Rivet.
Shell and Butt Straps of 28-32 ton Steel.

HEATING SURFACE.	
<i>Tubes</i>	565.48 sq.ft.
<i>Combustion Chambers</i>	126.67 " "
<i>Furnaces</i>	50.25 " "
<i>Total</i>	742.40 " "
<i>Total H.S. including Front Tube Plat</i>	756.52 " "

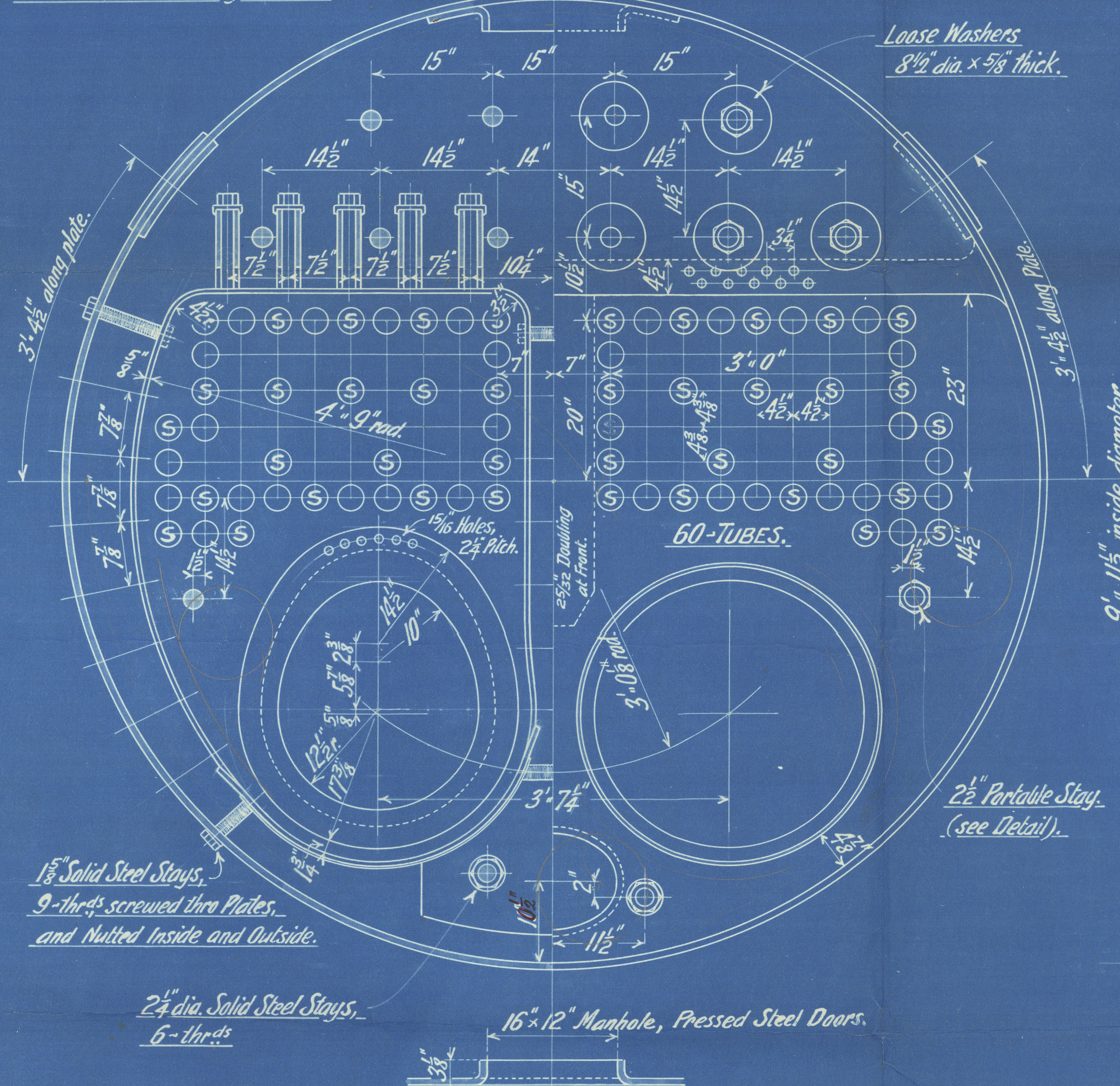


Screwed 9-thr^{ds} continuous thread.
Detail of Stay Tubes.



16" x 12" Manhole. Pressed Steel Door
and Ring.

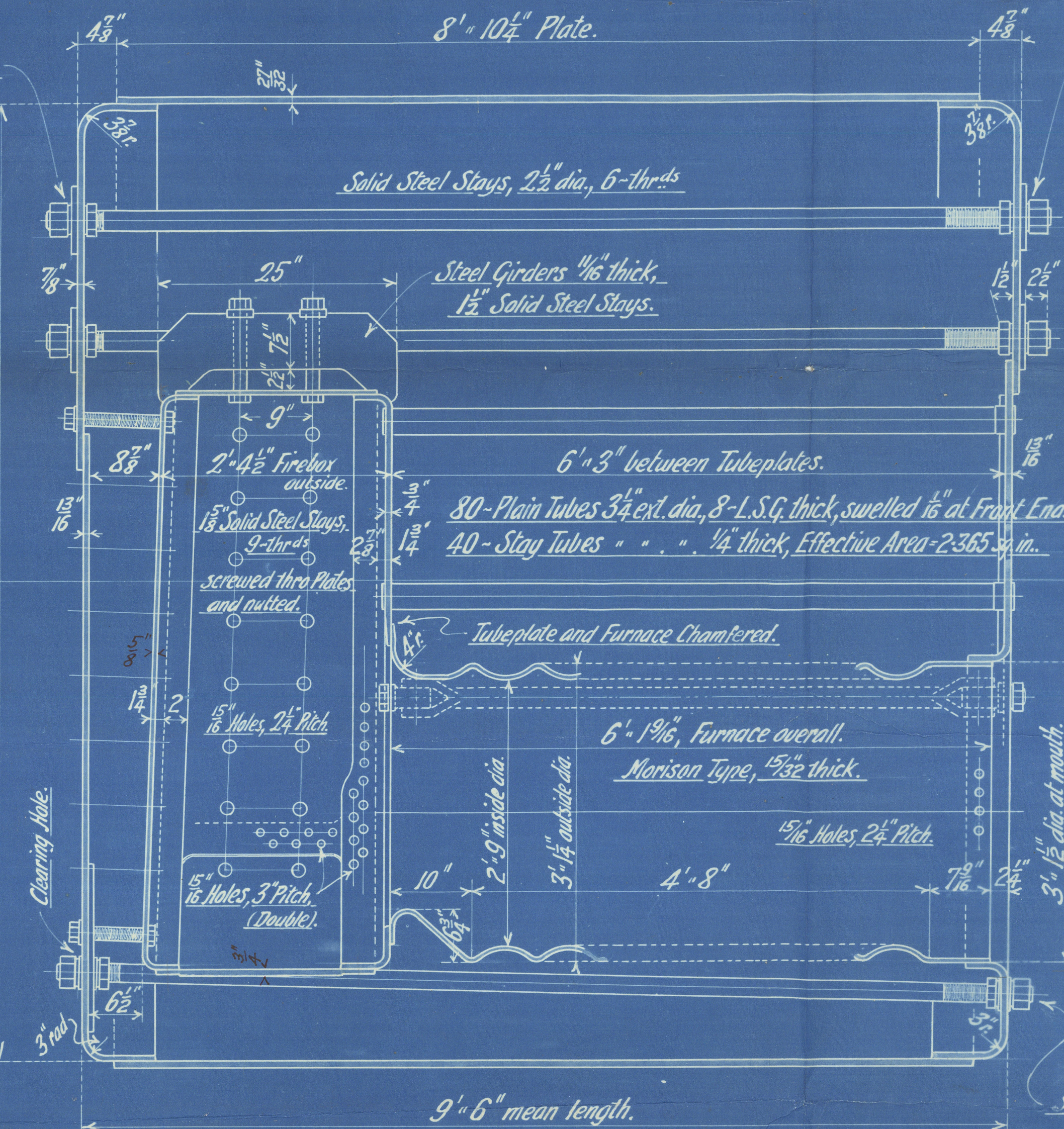
~~38 15/16 Rivet Holes.~~ ~~31/32 Pinholes~~
Plate 13/16 thick ~~42 Pinholes 13/16 dia~~
Position on Boiler to be given later.



Clearing Holes thro Back Plate and Washers.

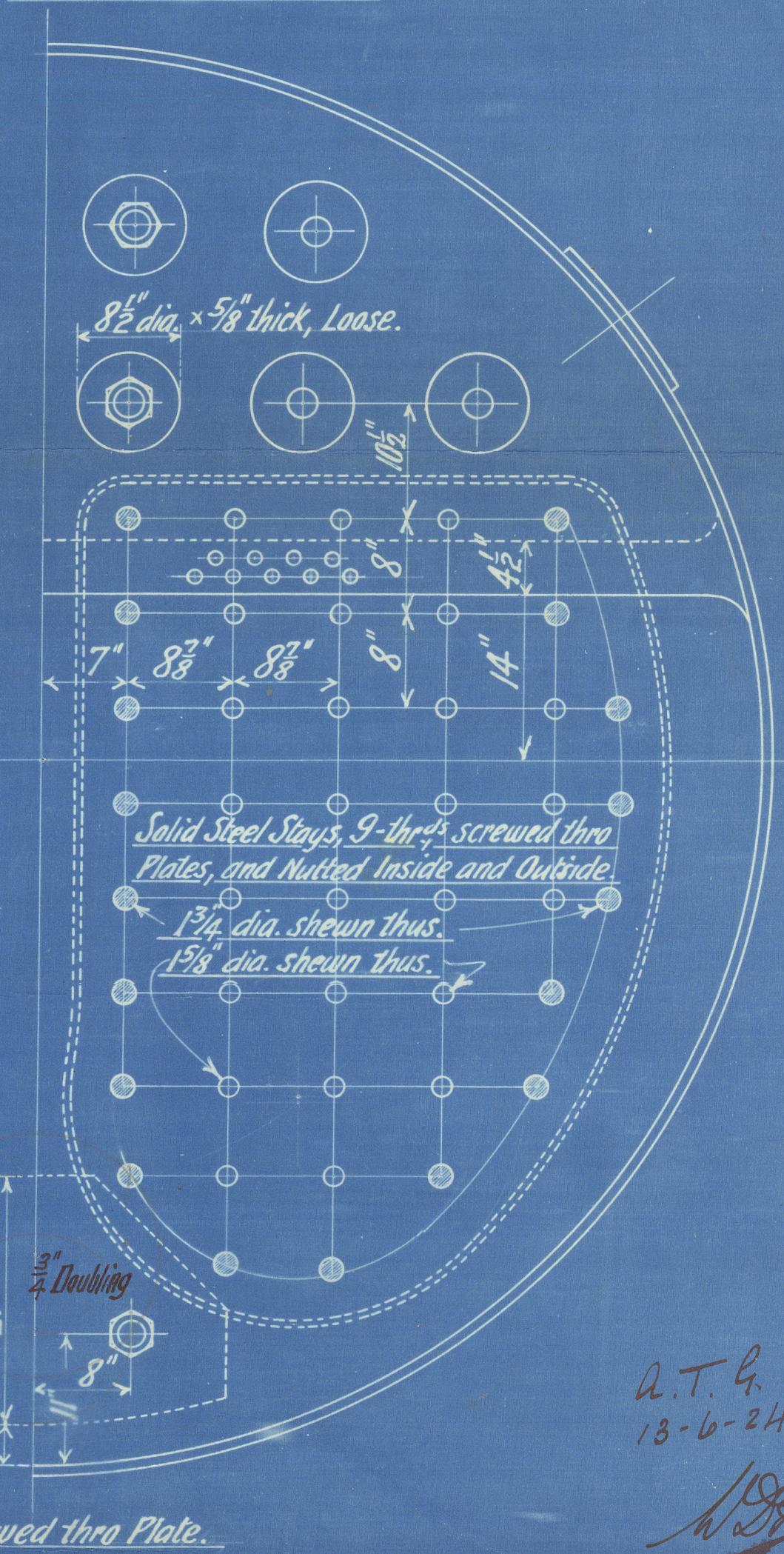
Loose Washers
8 1/2" dia. x 5/8" thick.

2 1/2" Portable Stay.
(see Detail).



Clearing Holes thro Washers,
Stays screwed thro Front Plate.

9'6" mean length



*Solid Steel Stays, 9-threads screwed thru
Plates, and NUTTED Inside and Outside*

1 3/4" dia. shown thus.

1 5/8" dia. shown thus.

A.T.G.
13-6-24

1- Boiler thus, To Lloyd's Requirements for 180 lbs.^a Working Pressure. Test Pressure 320 lbs.^a
Boiler to be of Steel throughout, except Tubes and Portable Stays, which are of Iron.

MAIN BOILER.
BOILER AND ENG N^o 698, G.

SCALE 1" = 1 FOOT

© 2020
Lloyd's Register
Foundation
W632-0055

A. + J. Inglis
Boiler N^o 698 G.

GLASGOW REPORT No. 44935.

"Redline ho 1"

RECEIVED



© 2020

Lloyd's Register
Foundation

W632-0055