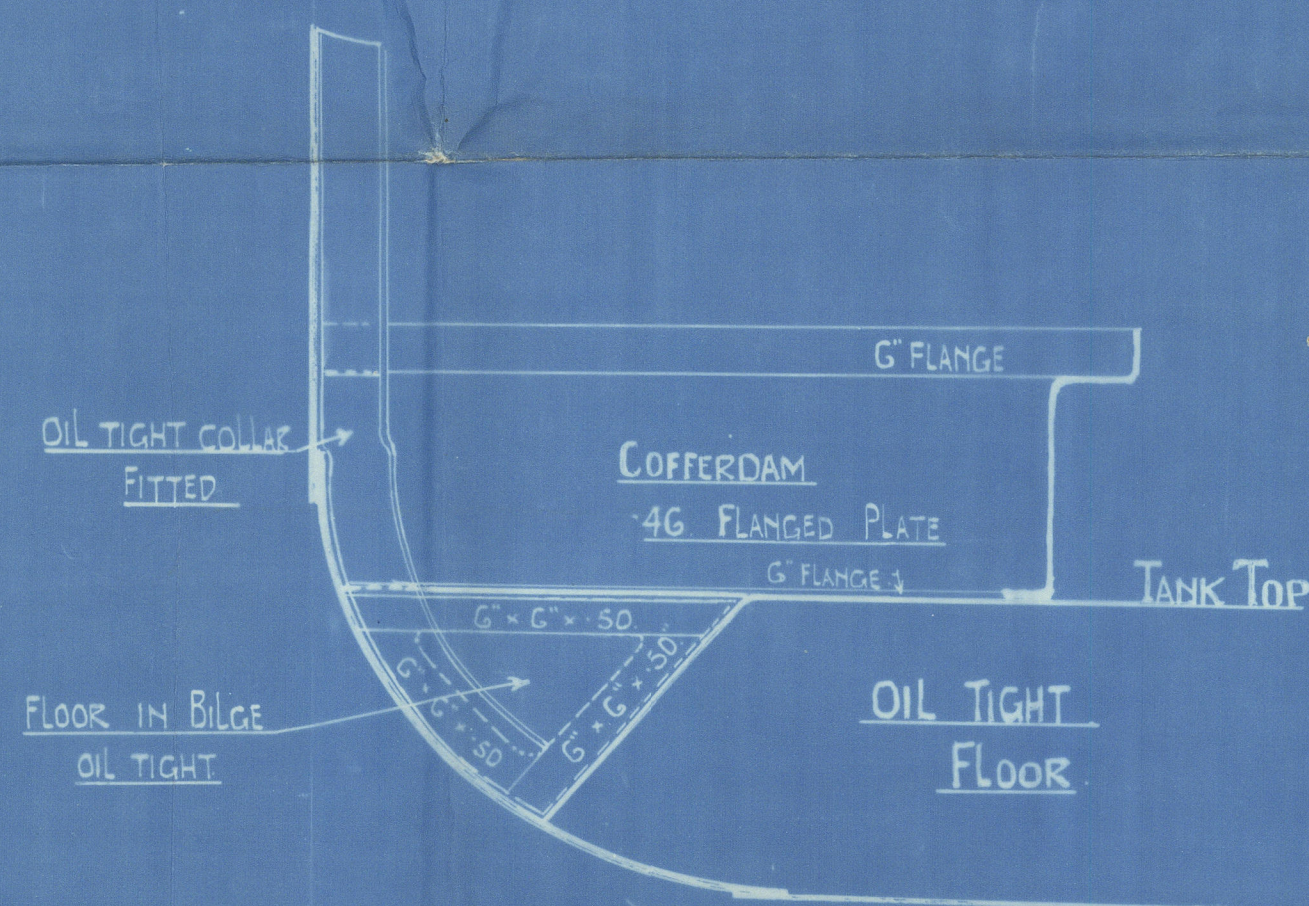


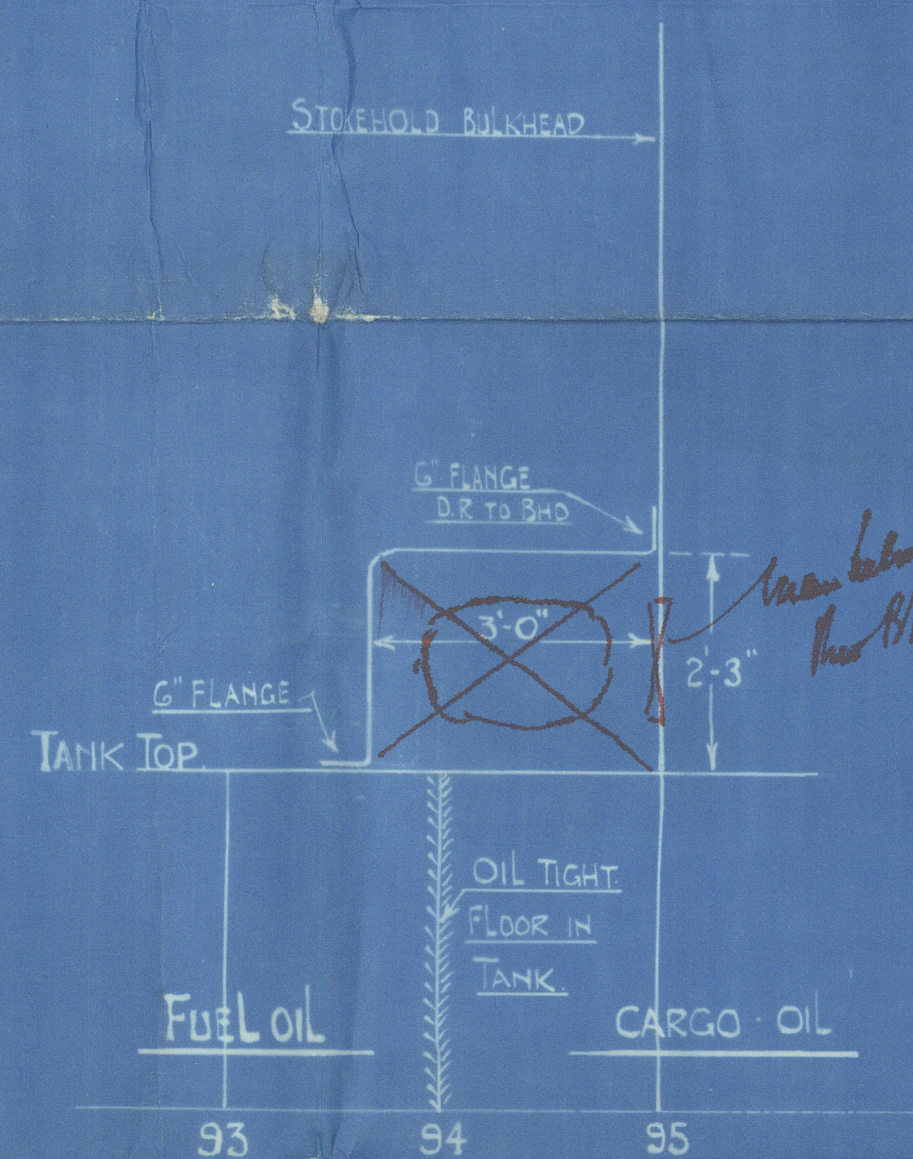
S.S. "QUEEN LOUISE"
 PLAN OF COFFERDAM AT STOKEHOLD BHD
 Scale $\frac{1}{2}'' = 1 \text{ Foot}$

MATERIAL MARKED C.S.B.

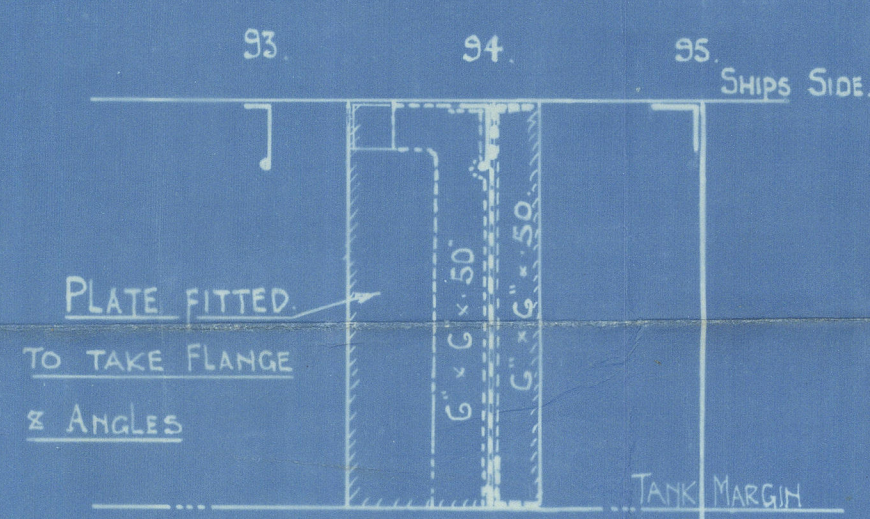
ALL BUTTS & COLLARS TO BE MADE OIL TIGHT



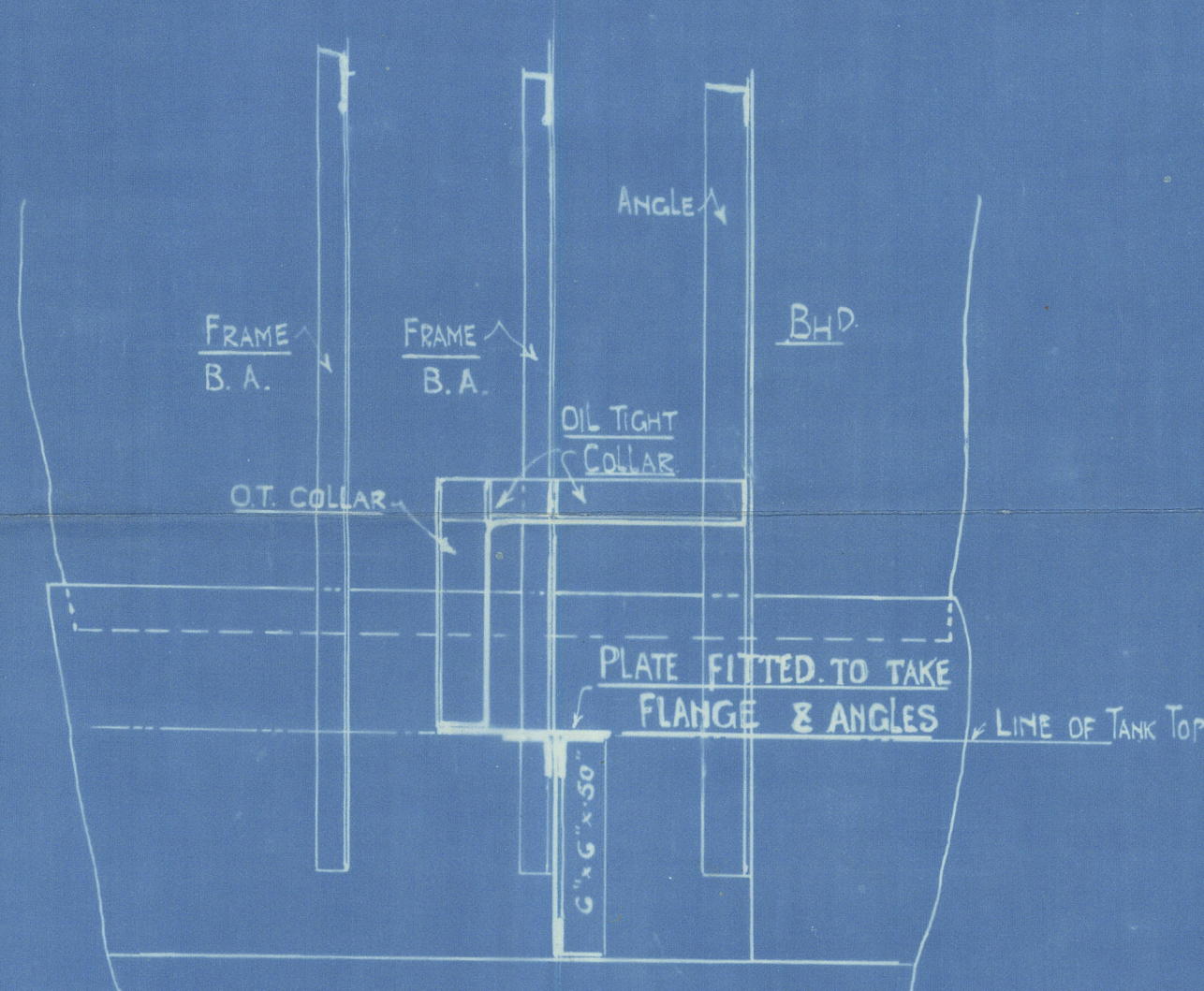
SECTION AT 94 FRAME
 LOOKING FORWARD



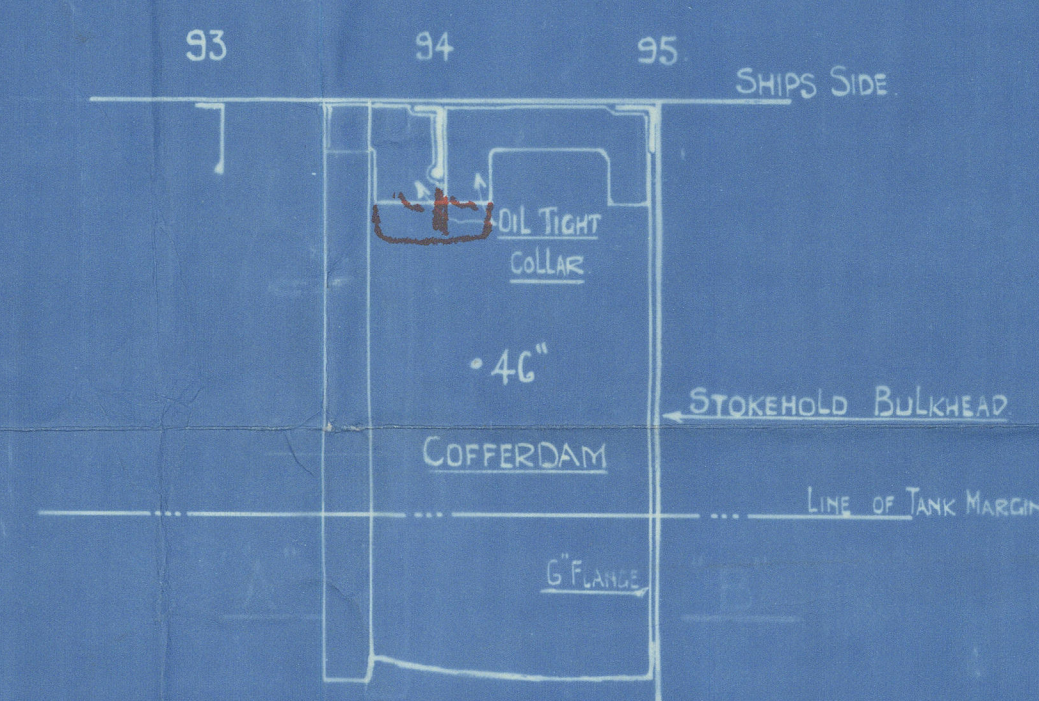
ELEVATION
 LOOKING OUTBOARD



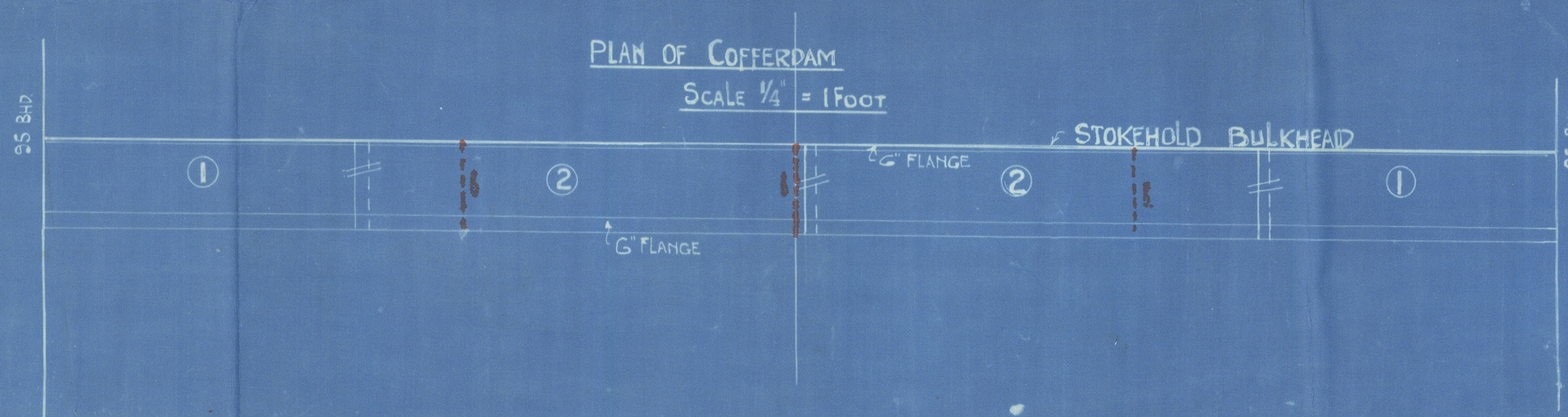
PLAN IN WAY OF BILGE
 AT TANK TOP LEVEL



ELEVATION LOOKING ON SHIPS SIDE



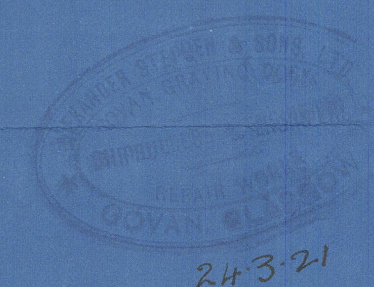
PLAN AT SHIPS SIDE
 SHEWING OIL TIGHT COLLARS ROUND FRAME AT
 TOP OF COFFERDAM



PLAN OF COFFERDAM
 SCALE $\frac{1}{4}'' = 1 \text{ Foot}$

APPROVED
 LLOYD'S REGISTER OF SHIPPING

John A. Gorman
 31.3.21

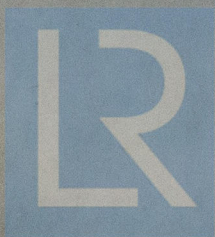


QUEEN LOUISE

• COTTERDAM

Stokehold BHD.

Glasgow Report No. 41423.



© 2020

Lloyd's Register
Foundation

W832-0107