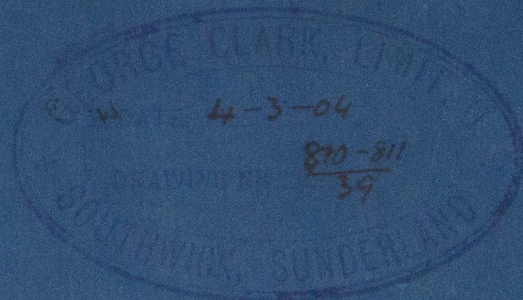
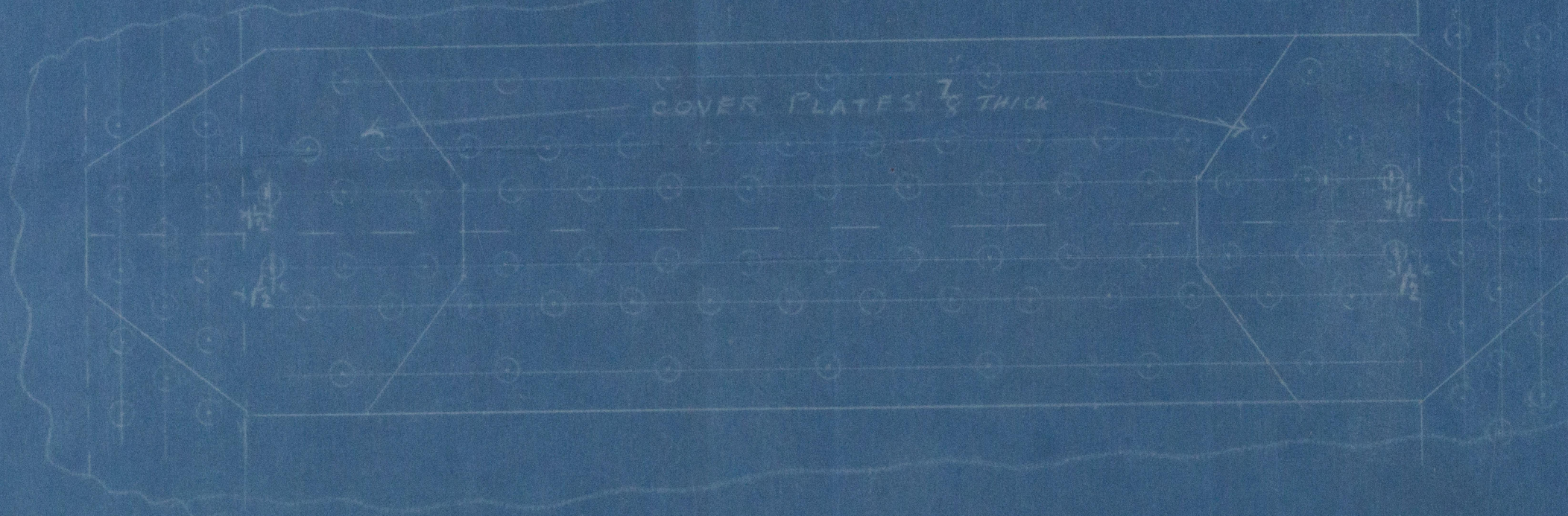
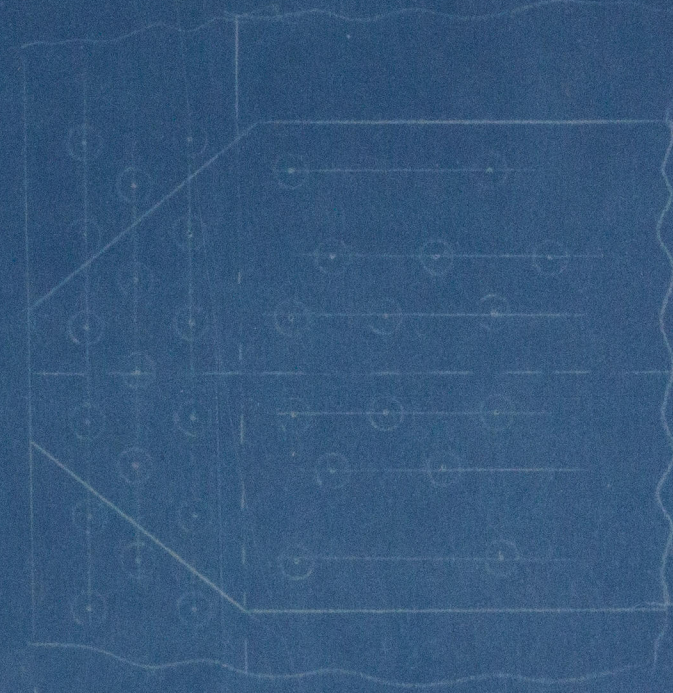
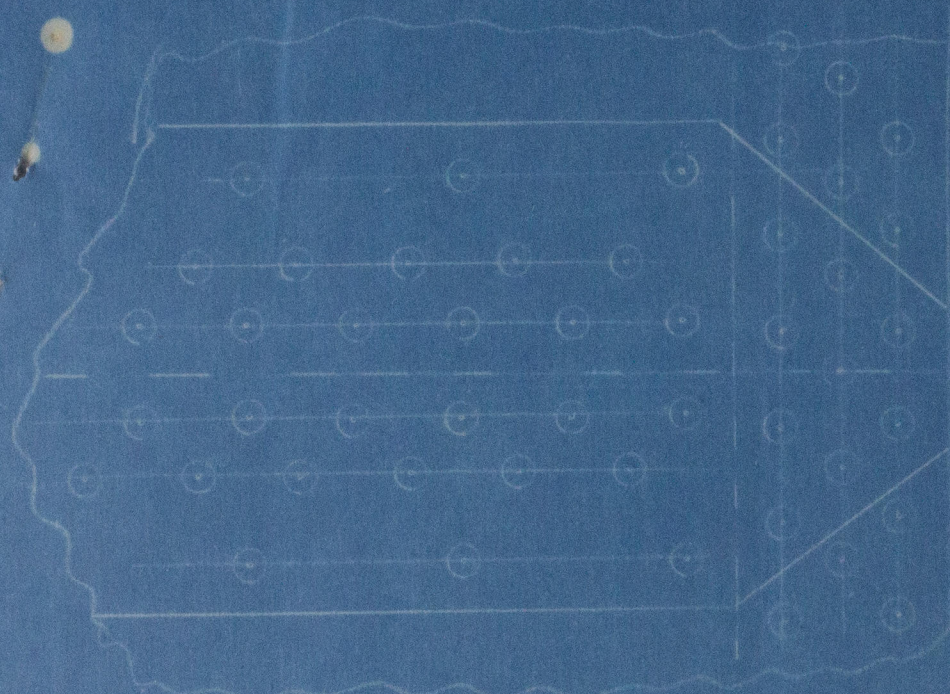




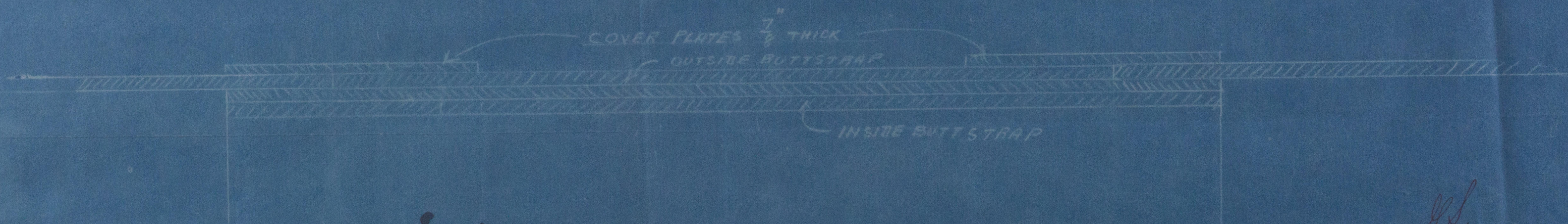
7.3.04



820-811  
39



COVER PLATES  $\frac{7}{8}$ " THICK



COVER PLATES  $\frac{7}{8}$ " THICK

OUTSIDE BUTT STRAP

INSIDE BUTT STRAP

BOILERS NO 810

AMENDED PLAN OF SHELL RIVETING

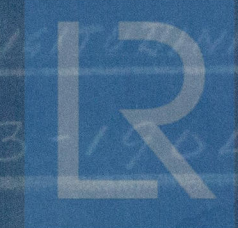
SHOWING COVER PLATES FITTED TO MIDDLE LONGITUDINAL SEAM

SCALE  $\frac{1}{2}$ " = 1 FOOT

4-3-1904

7.3.04

W633-0159



Lloyd's Register  
Foundation



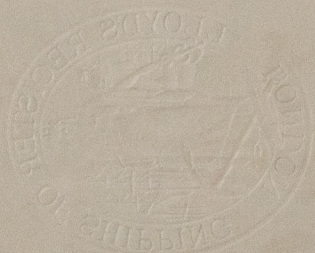
New Langs 8/5 604

Gen. Clerk C 810

Amended Bill of Lading



W633-0159 1/2



© 2020

Lloyd's Register  
Foundation



W633-0159 2/2

Enclosure from

GEORGE CLARK, LTD.

For

Lloyds

New Lamps 5/6024

Gen. Clerk C 810

Recommended Post Stamp



W633-0159 1/2



© 2020

Lloyd's Register  
Foundation