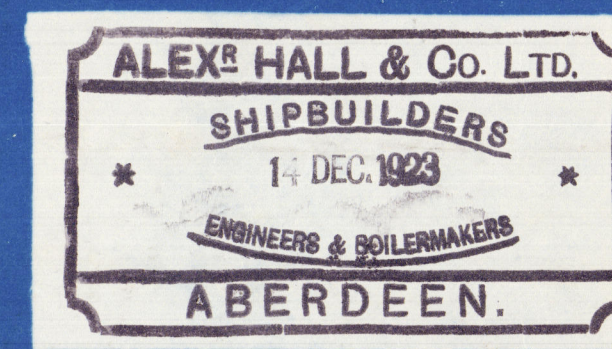
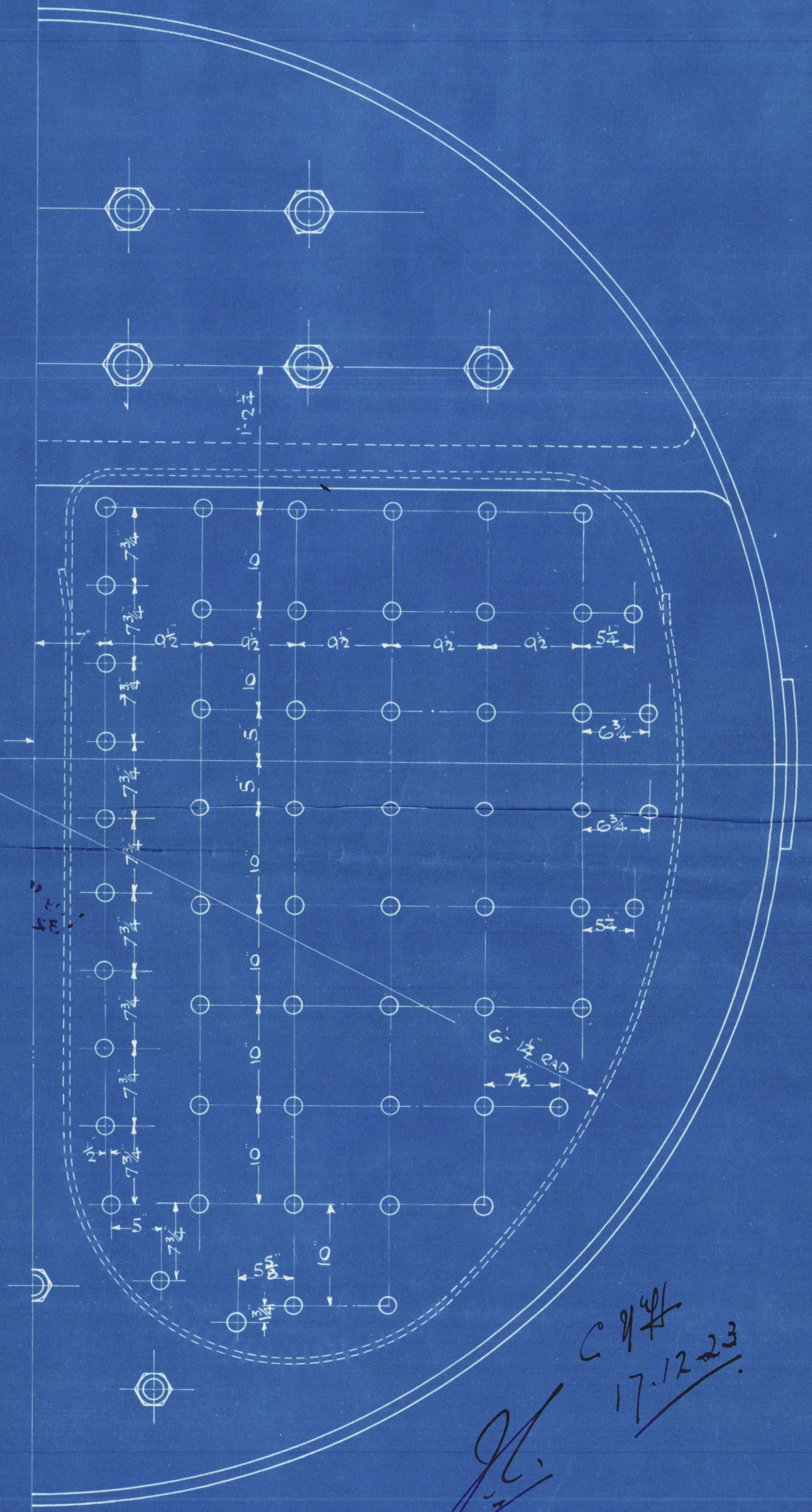
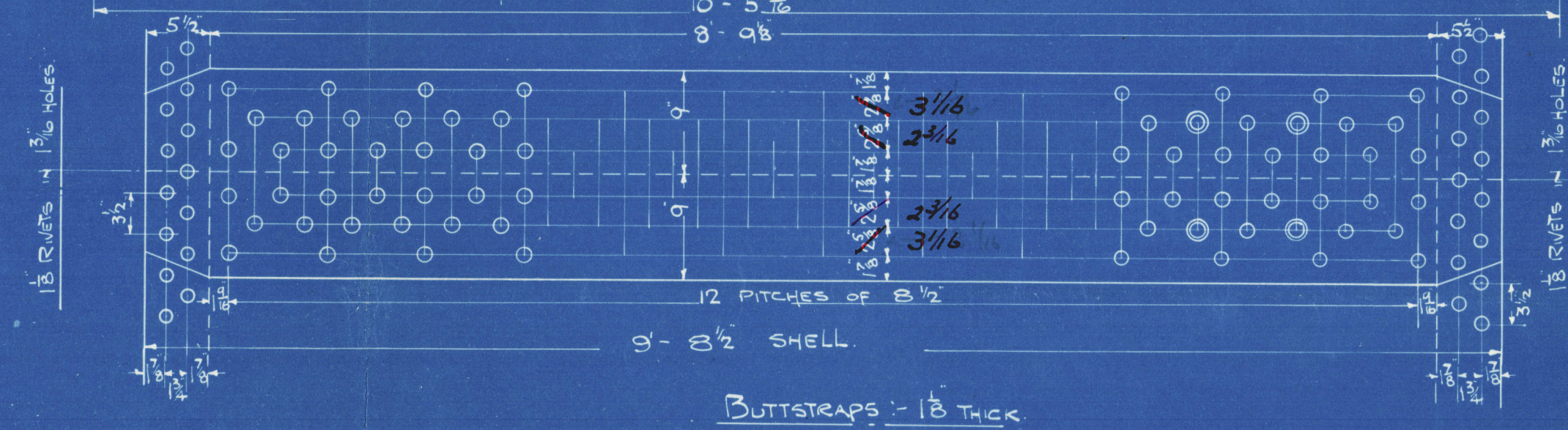
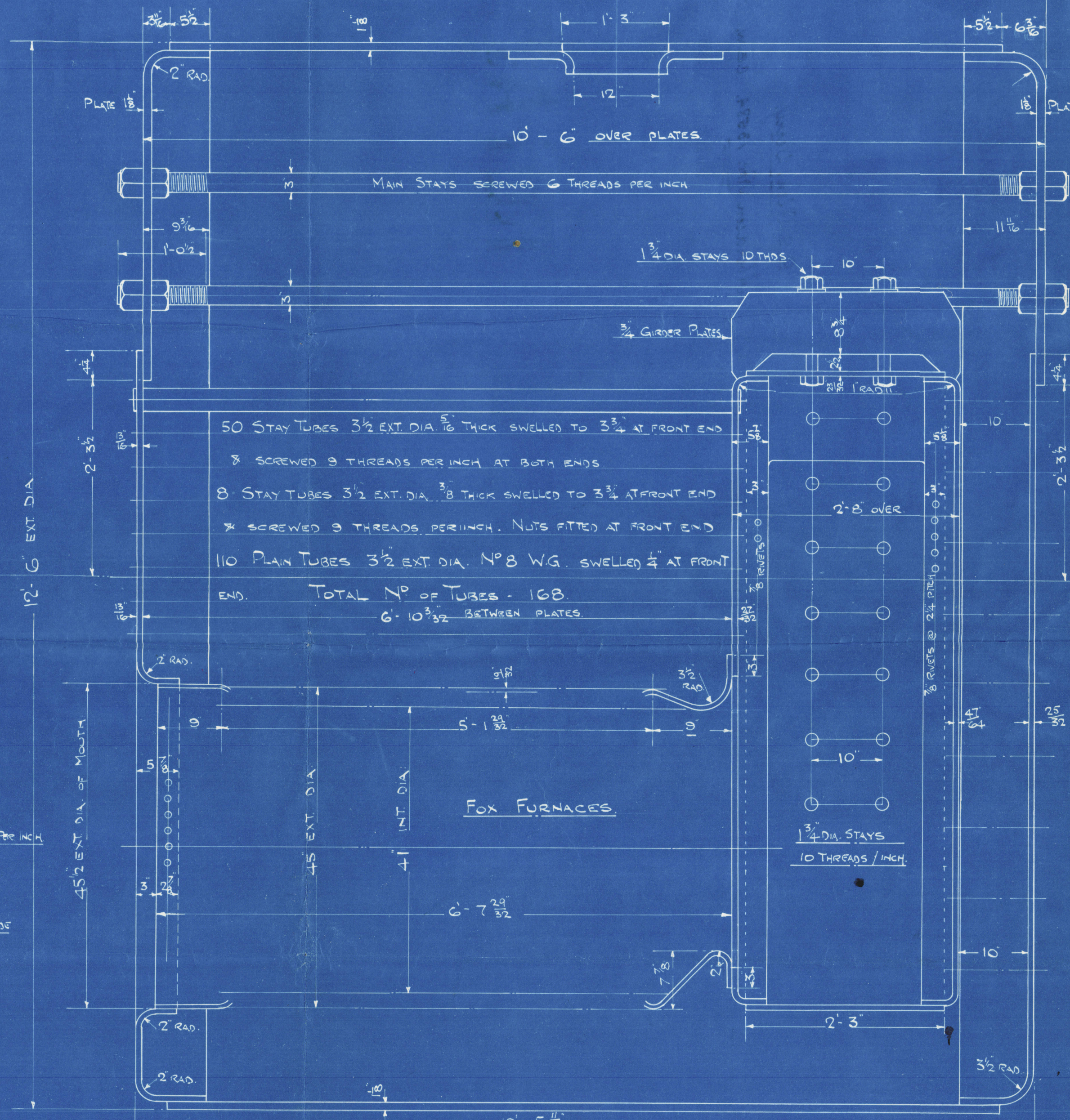
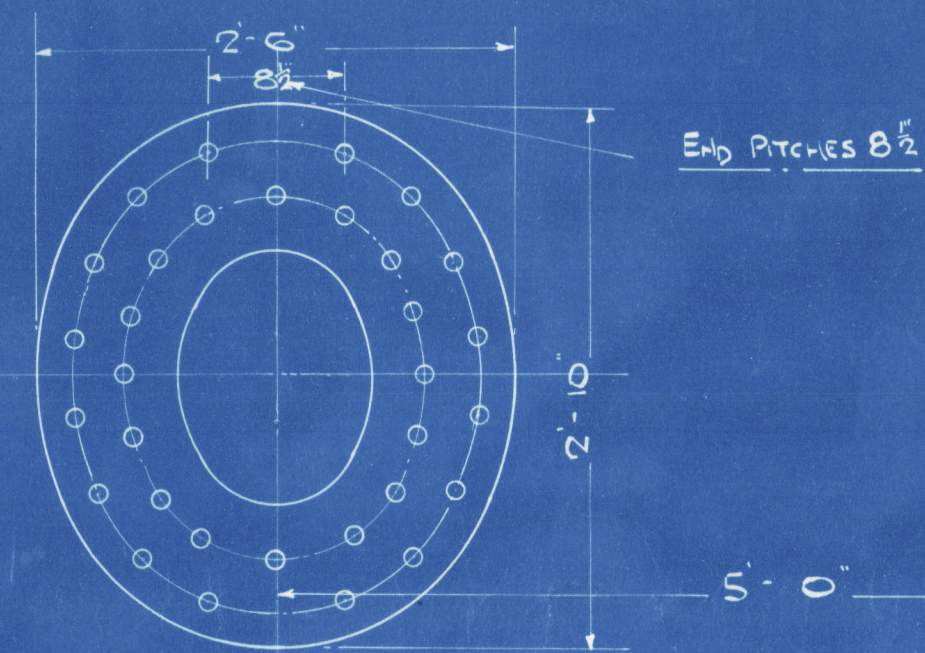


MCNEIL MANHOLE DOOR 16 x 12
STUD SCREWED THRU DOOR WITH NUTS
INSIDE FACED SADDLE DOUBLE RIVETED
TO SHELL. RIVETS 1 1/8" DIA. AT 8" PITCH.
AT OUTER ROW FLANGED IN 3"
COMPENSATING RING 1 1/8" THICK



LONGITUDINAL SEAM = PLATE 86 1/2%
RIVET 89 1/2%

MARINE BOILER

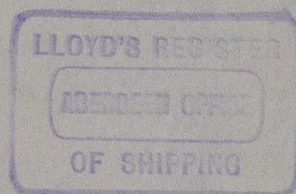
WORKING PRESSURE 190 LBS PER SQ INCH
TO STANDARD REQUIREMENTS
SCALE 1" = ONE FOOT

HEATING SURFACE IN FURNACES	708 #
" " " C CHAMBERS	170 #
" " " TUBES	1052 #
TOTAL HEATING SURFACE	12928 #
AREA OF GRATE 4'-0" BARS	30 #
RATIO G.A. TO H SURFACE	1:43

UOB	Nos
282	283



A Hall & Co. Ltd.
Boilers Nos. 282 & 83.



S. S. Glen. Derry.
Aberdeen Ref. 13584. C.E.W.

RETAIN



© 2020

Lloyd's Register
Foundation