

No 331 S.S. FUKU MARU
AS BUILT

No 330-I

MIDSHIP SECTION

S. S. CARGO STEAMER

SCALE: 1/2 IN TO 1 FT.

TEISHIN SHO 1ST CLASS VESSEL & 100A1. AT LLOYD'S.

PRINCIPAL DIMENSIONS

LENGTH PP 388' 0"
BREADTH MD 53' 3"
DEPTH 32' 0"
TWEEN DECK HEIGHT 8' 6"
HEIGHT OF POOP BRIDGE 7' 9"
AND FORECASTLE DECK

NUMERALS

B.D. 53.25 x 32 = 85.25
(B.D.) L. 85.25 x 388 = 33,077.00

PROPORTIONS

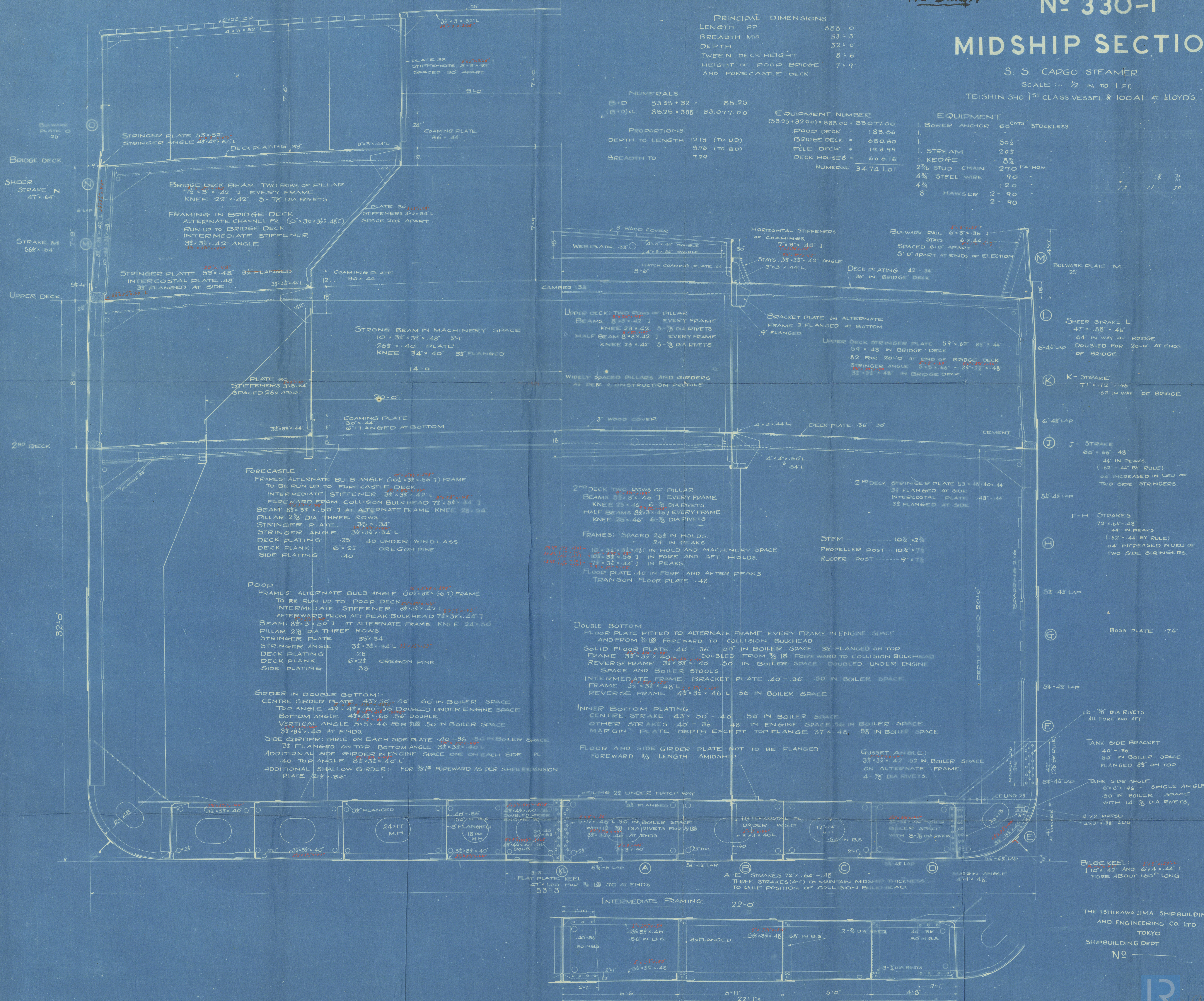
DEPTH TO LENGTH 12.13 (TO MD)
3.76 (TO B.D.)
BREADTH TO 7.29

EQUIPMENT NUMBER

(53.25 x 32.00) x 388.00 = 83,077.00
POOP DECK = 183.56
BRIDGE DECK = 680.30
FORE DECK = 143.49
DECK HOUSES = 606.16
NUMERAL 34.74 1.01

EQUIPMENT

1. BOWER ANCHOR 60 CWT STOCKLESS
1. I. STREAM 50 1/2
1. I. KEDGE 20 1/2
2 1/2 STUD CHAIN 270 FATHOM
4 1/2 STEEL WIRE 90
4 1/2 120
8 HAWSER 2-90
2-90



THE ISHIKAWA JIMA SHIPBUILDING AND ENGINEERING CO. LTD
TOKYO
SHIPBUILDING DEPT
NO

No. 331

FUKKI-MARU

MID SHIP SECTION

AS BUILT.

The Ishikawajima Shipbuilding
& Engineering Co. Ltd.,
T o k y o.

S Fukki Maru
yka 3310

RECEIVED



© 2020

Lloyd's Register

W64 Foundation