

BOILERS NO 757-8-9

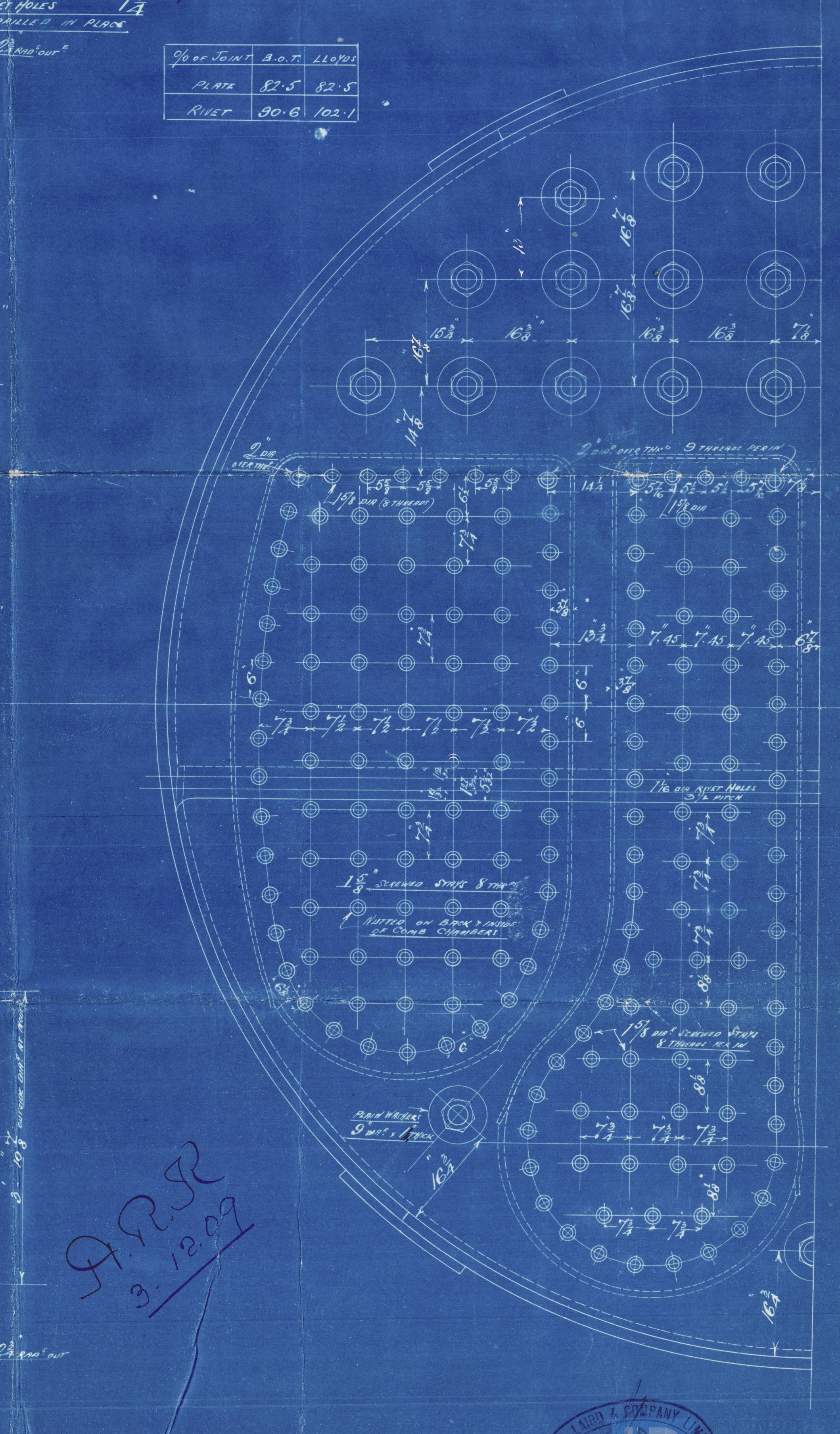
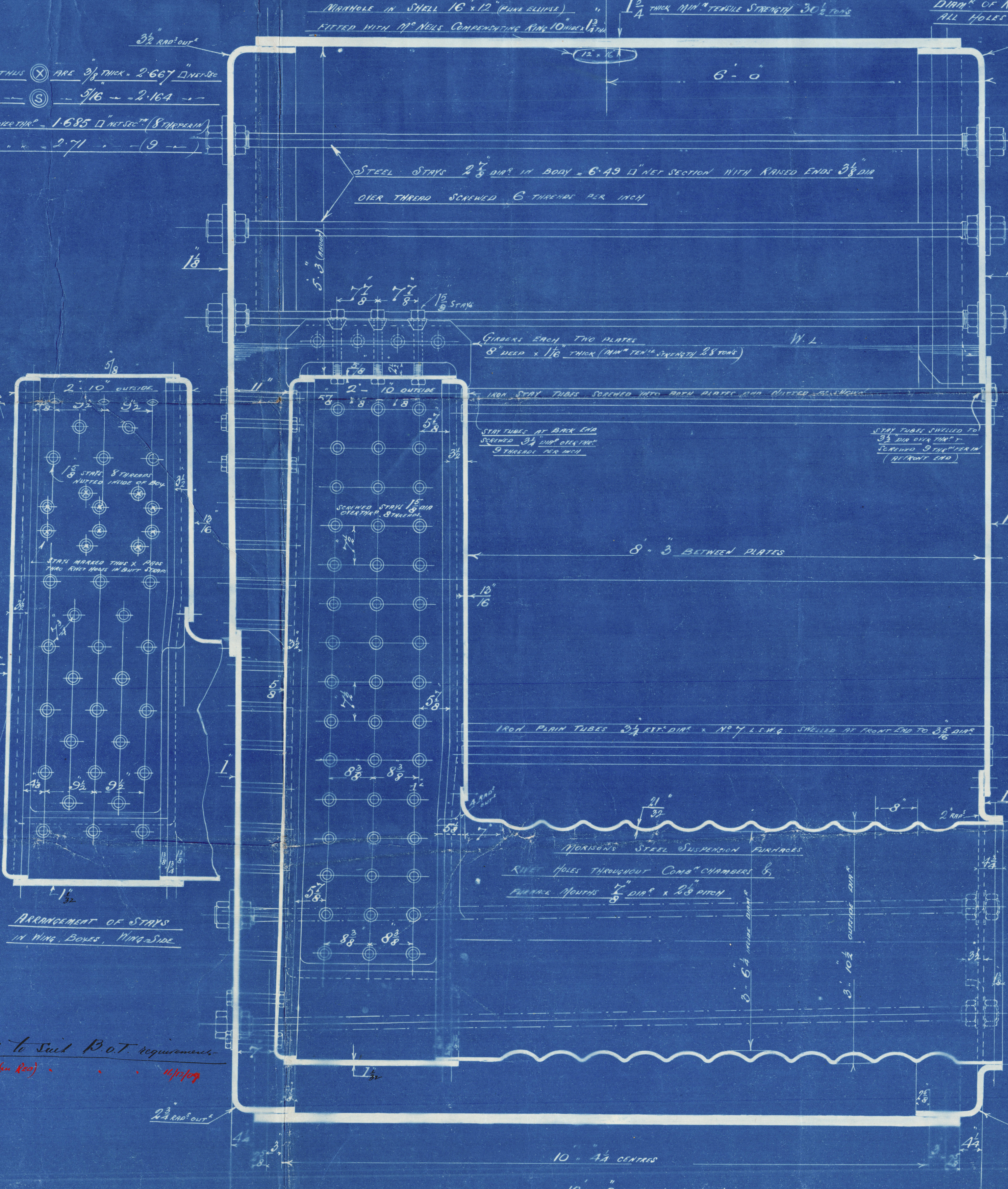
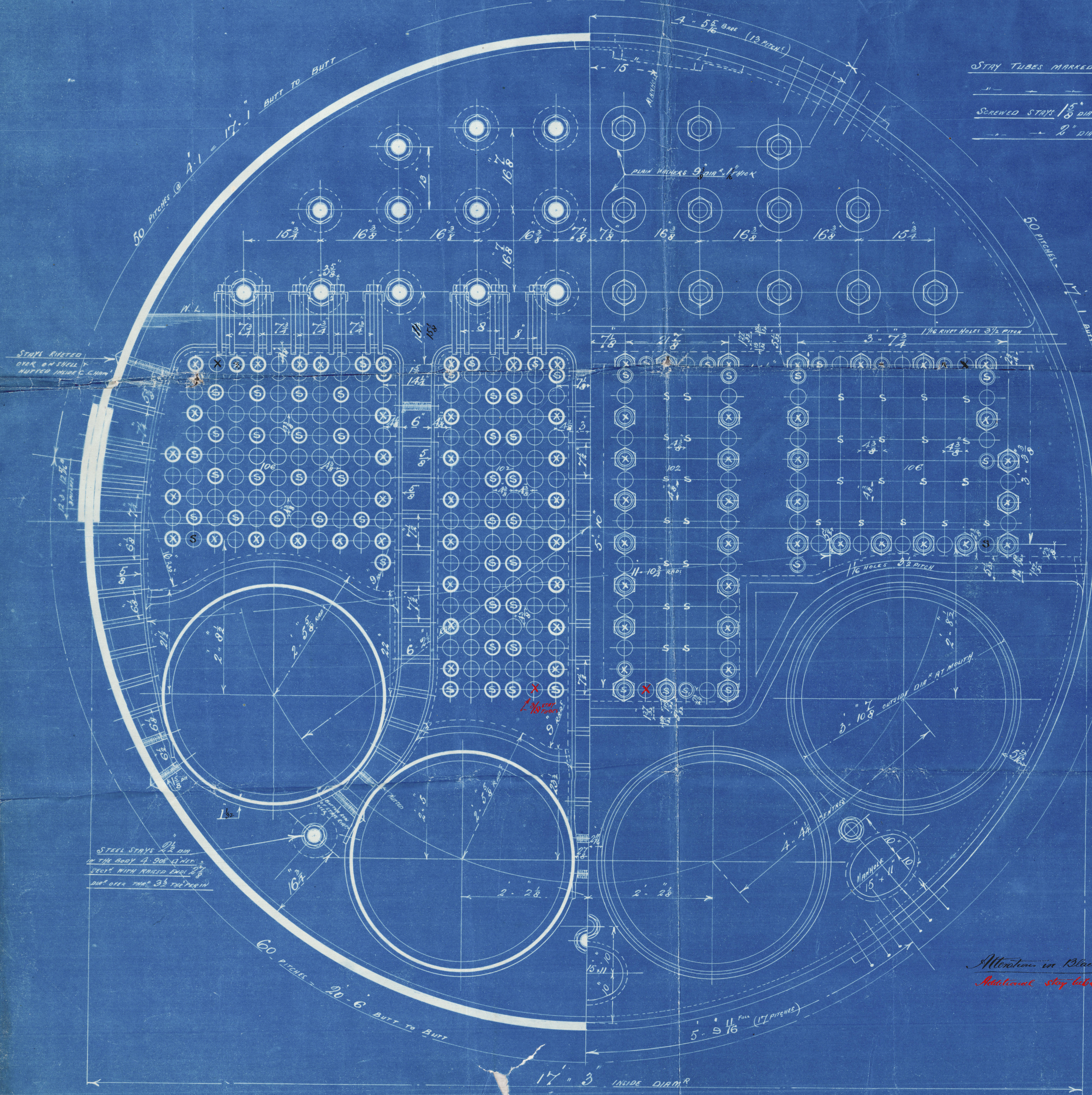
ONE NATURAL DRAUGHT BOILER THIS  
FOR EACH VESSEL - (THREE IN ALL)

EACH BOILER {  
416 IRON TUBES  $3\frac{1}{4}$ " EXT. DIA. x 8' 5" LONG x 18' 7" L.S. (INCLUDING 10 STAY TUBES)  
HEATING SURFACE OF TUBES 2917 SQ. FT.  
FURNACE 603  
TOTAL 3520  
AREA OF FIRE GRATE (6.6 BARS) 95 SQ. FT.  
STEAM CAPACITY 605 CUBIC FT.

Working pressure 210 lbs per square inch  
Test 420  
PLATES STAYS & RIVETS STEEL

3/12/09

APR 12 09



% of JOINT	S.O.T.	LLDPS
PLATE	82.5	82.5
RIVET	30.6	102.1

Scale 1 inch = 1 foot



S. S. Highland Brae

Lin Rpt 65057

S. S. Highlandloch

Lin Rpt 65661

S. S. Highland Piper

Lin Rpt 66204

Cannell Laird

Boiler 48454-8-9

Natural Draught

A. P. 210 lbs

3.074



1914  
Lloyd's List  
420 lbs  
30-8-10

W. 758-26 W. 339  
No 1925  
LLOYD'S LIST  
420 lbs.  
27.10.10. A.J.B.

Highland Piper  
Loch  
Mal

RETAIN



© 2020

Lloyd's Register  
Foundation