

SURFACES	ONE BOILER	TWO BOILERS
TUBES	1895	3790
FIREBOX TOP & SIDES	147	294
BACK	70	140
TUBEPLATE	90	180
FURNACES	153	306
TOTAL HEATING SURFACE	2321	4642
GRATE AREA (5-OBARS)	53.75	107.5
TUBE AREA	11.4	22.8
WATER	50	100
STEAM SPACE	444	888
GRATE AREA	42.13	84.26
HEATING SURFACE	1	2
TUBE	1	2
AREA	4.7	9.4
WATER	2.79	5.58
STEAM SPACE	8.26	16.52
% BOILER ABOVE FIREBOX	31.3	62.6
WEIGHT OF WATER	23 TONS	46 TONS

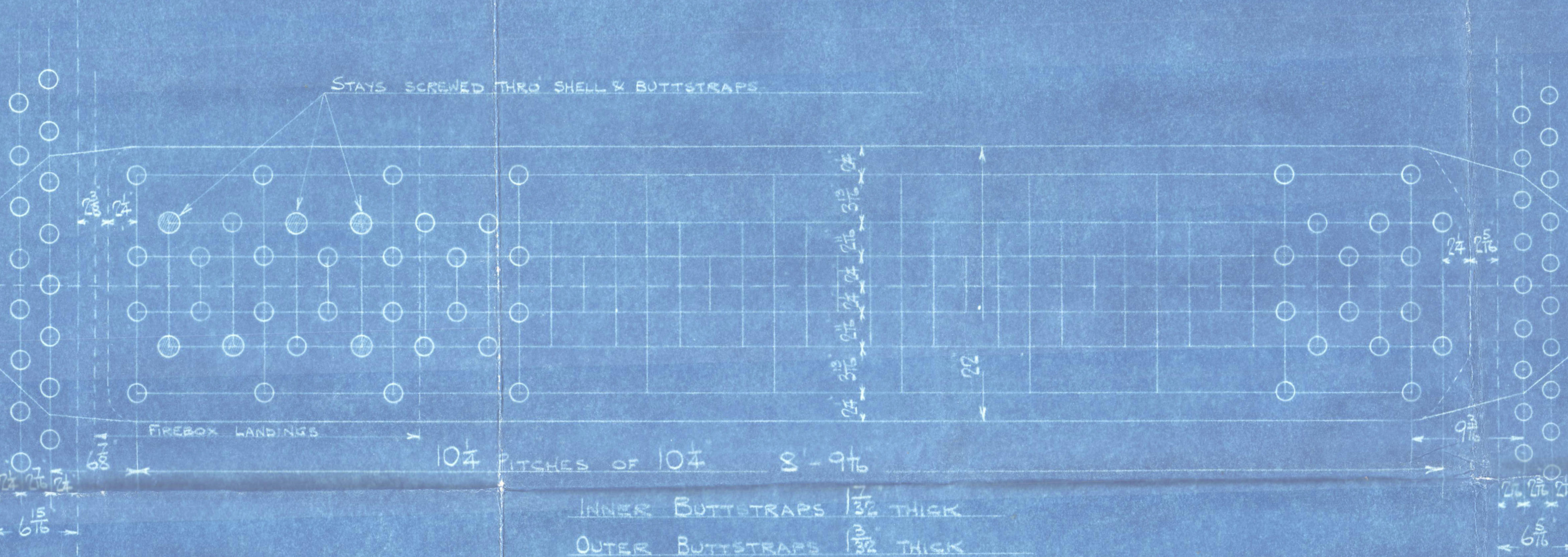
RIVETING		
LONG	BACK END CIRC	FRONT END CIRC
RIVET HOLE DIA	1 1/4	1 1/2
PITCH	10 1/2	4 1/2
% PLATE	55.56	52.6
% RIVET	39	47.8
% COMBINED	55.5	59.5

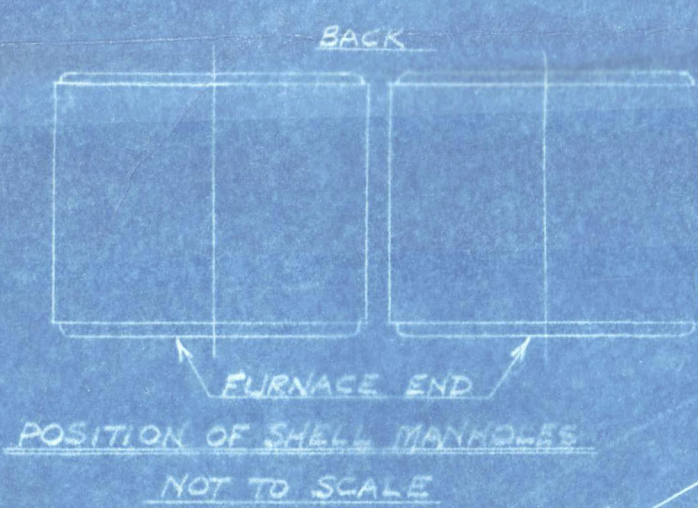
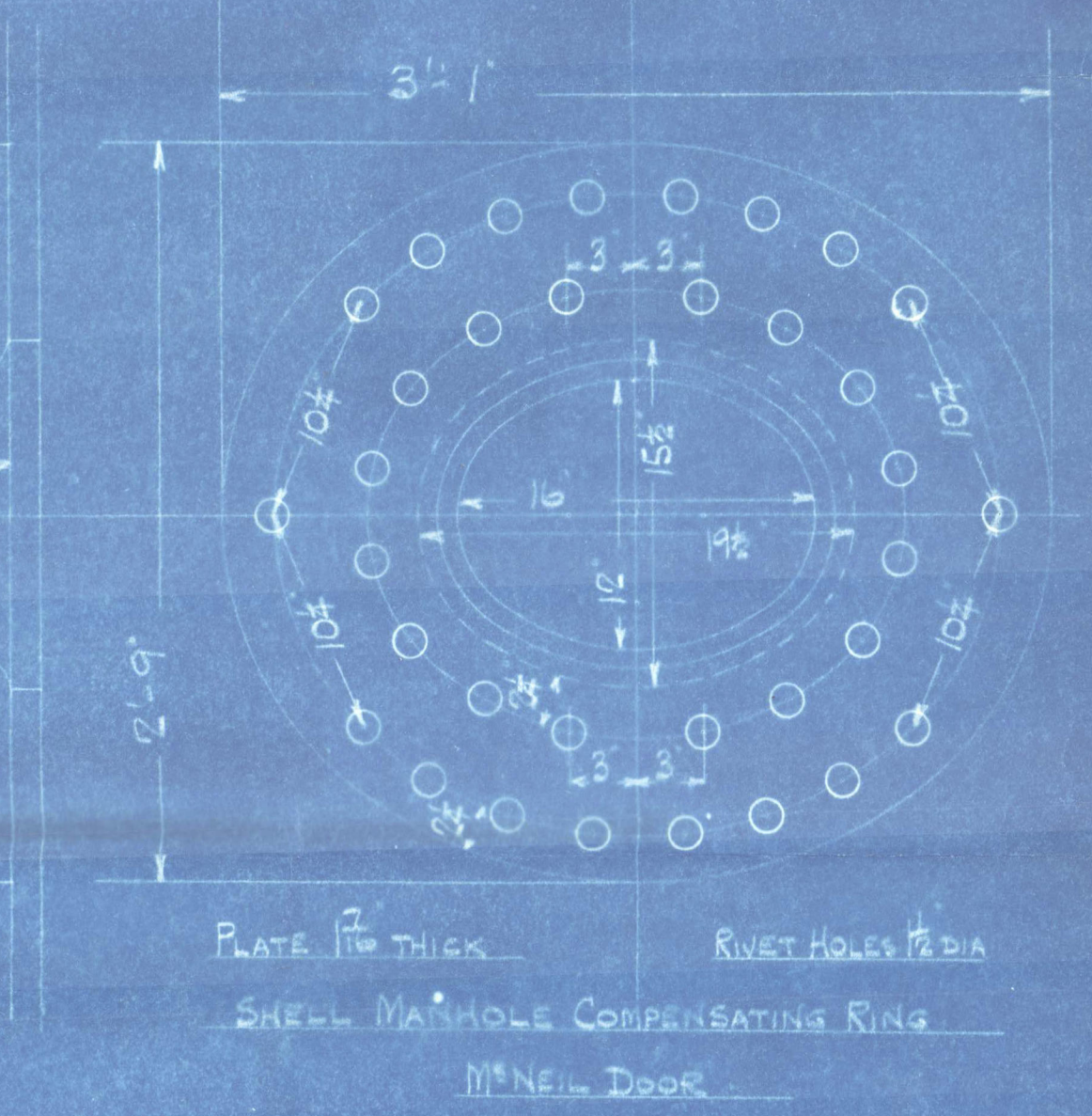
LIMITS OF TENSILE STRENGTH & MATERIAL	
SHELL & BUTTSTRAPS	21 TO 22 TONS
GIRDERS	25
OTHER PLATES	26
FURNACES	26
MAIN STAYS	21
SHEARED STAYS	21
RIVET BARS	25

SIEMEN-MARTIN STEEL

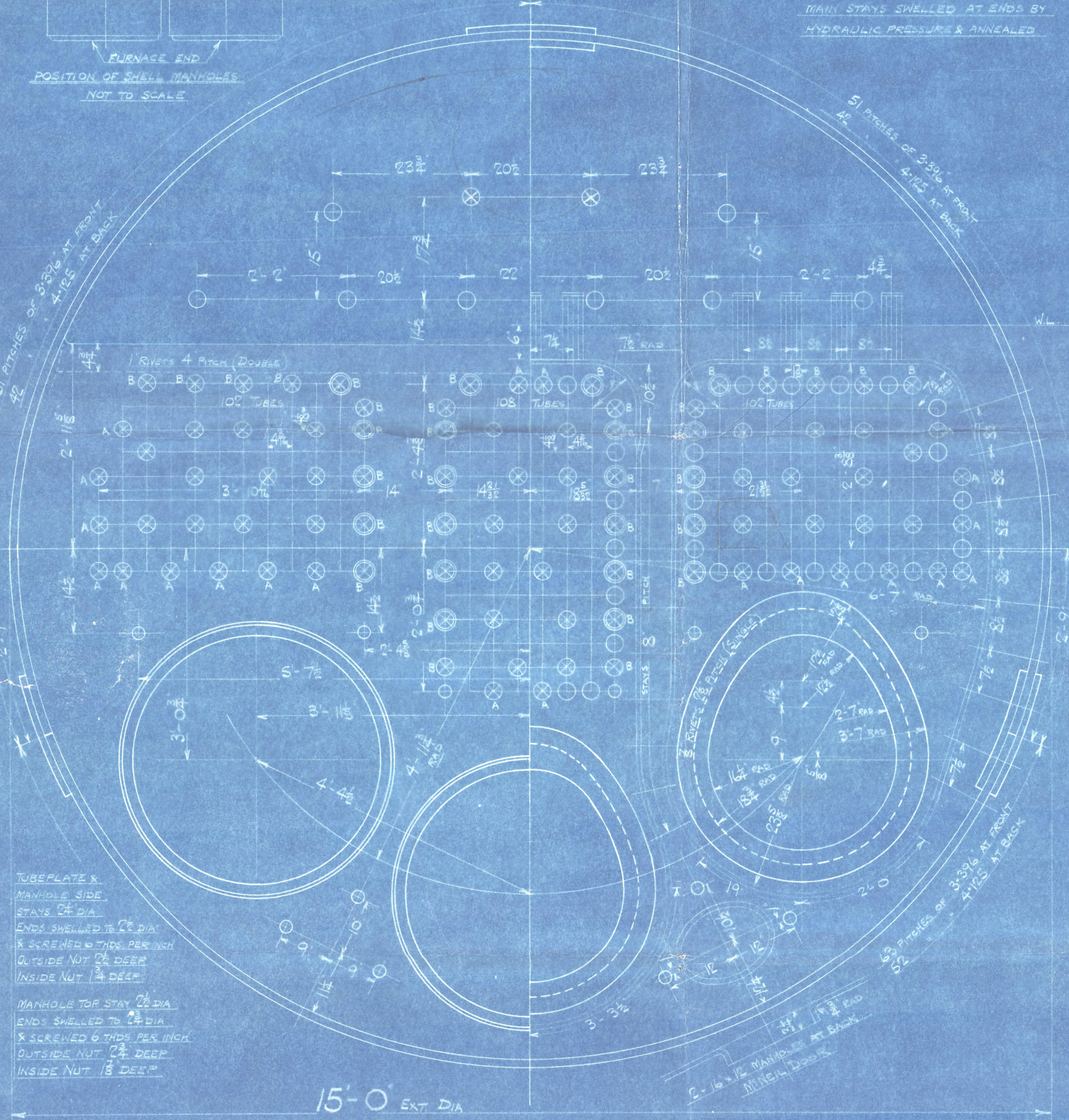
BACK END CIRCUMFERENCE  
136 PITCHES OF 4 1/2"



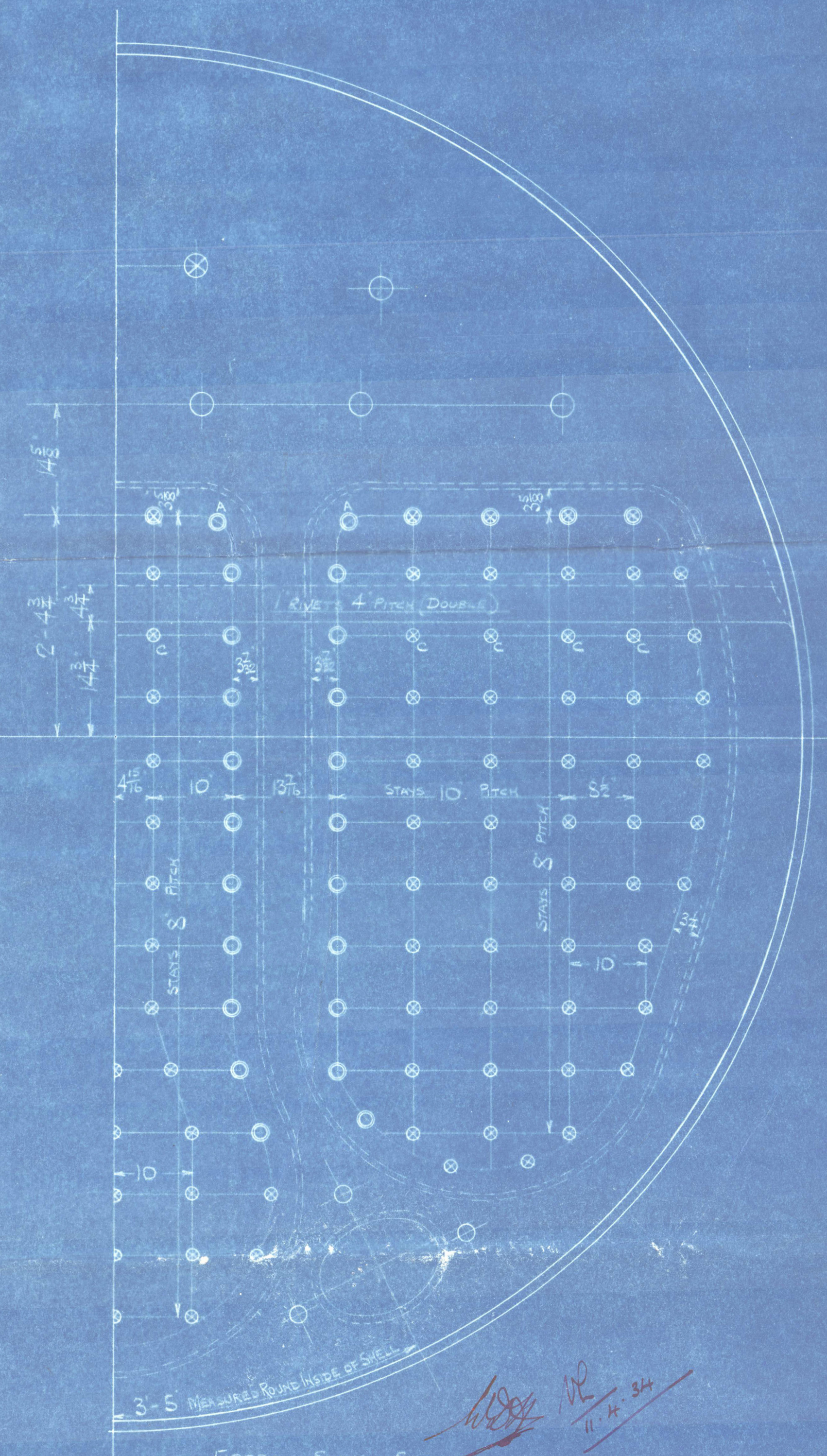
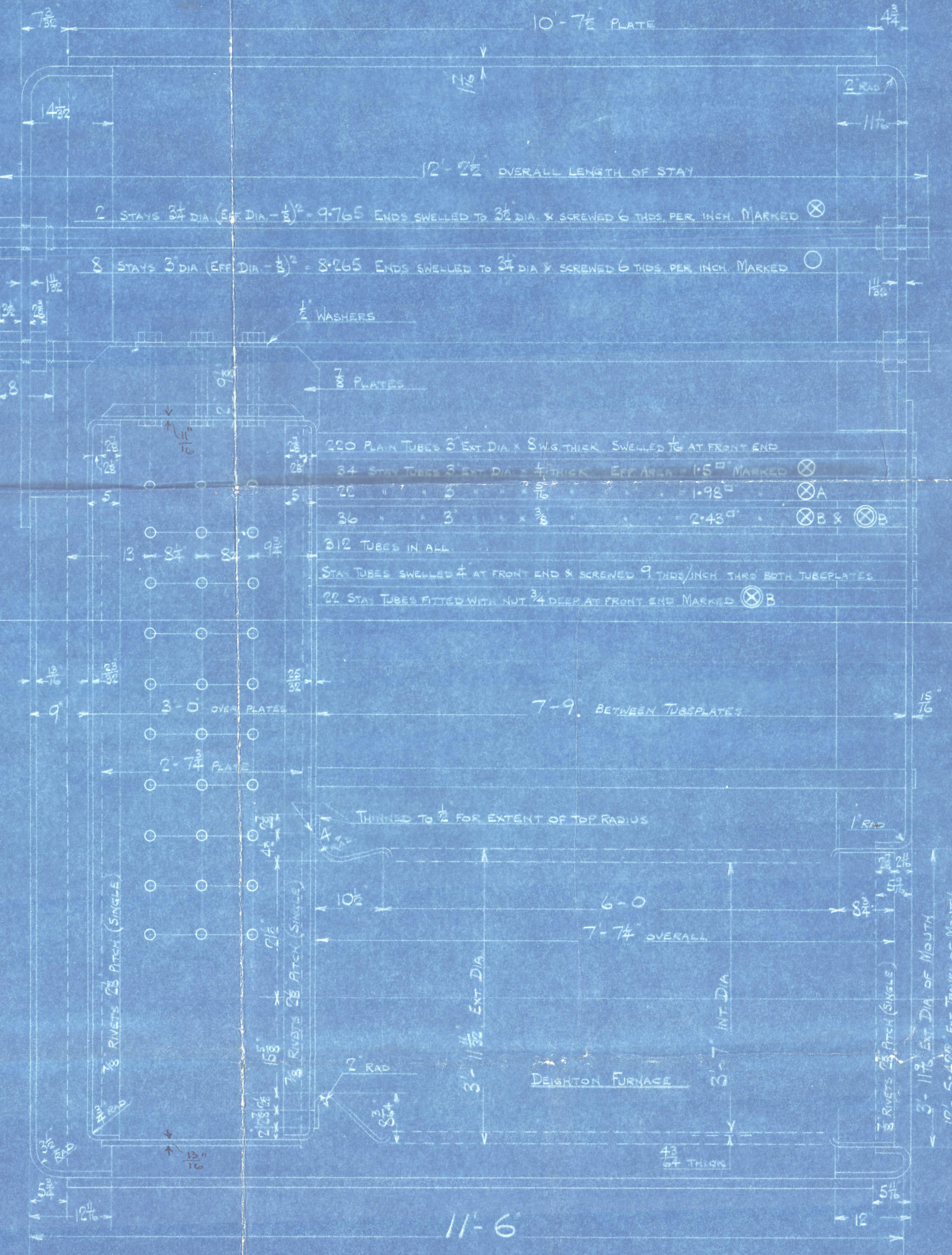
FRONT END CIRCUMFERENCE  
165 PITCHES OF 3 3/8"



ALL RIVET HOLES DRILLED IN PLACE  
MAIN STAYS SWELLED AT ENDS BY  
HYDRAULIC PRESSURE & ANNEALED



TUBEPLATE & MANHOLE SIDE  
STAYS 2 1/2\"/>



# MAIN BOILER TWO OFF CONT N° 966

WORKING PRESSURE 200 LBS PER SQ INCH  
TEST 380  
TO PASS LLOYD'S SURVEY  
SCALE - ONE INCH = ONE FOOT

POSITION	MARK	DIA (2A-20)	SCREWED THRU/INCH
TOP & SIDES	0	1 1/8	9
BACK	8	1 1/2	9
BACK WIDE SPACE	0	1 1/8	9
BACK TOP ROW	8	2	9
CORNER	0A	2 1/4	9

ALL FIREBOX STAYS SCREWED THRU BOTH PLATES & NUT FITTED AT EACH END EXCEPT STAYS FROM WING FIREBOX TO SHELL & STAYS MARKED C IN BACK BOTTOM END WHICH PROJECT 3/8\"/>

OT 37933





GLASGOW

D ROWAN & CO

(2) BOILERS IN Q66

W 8 - 220 LBS

BLYTHS WOOD SBG

S/S N° 35

---

Argentine Transport  
GLASGOW REPORT No. 56030

W66-0109



© 2021

Lloyd's Register

Foundation