

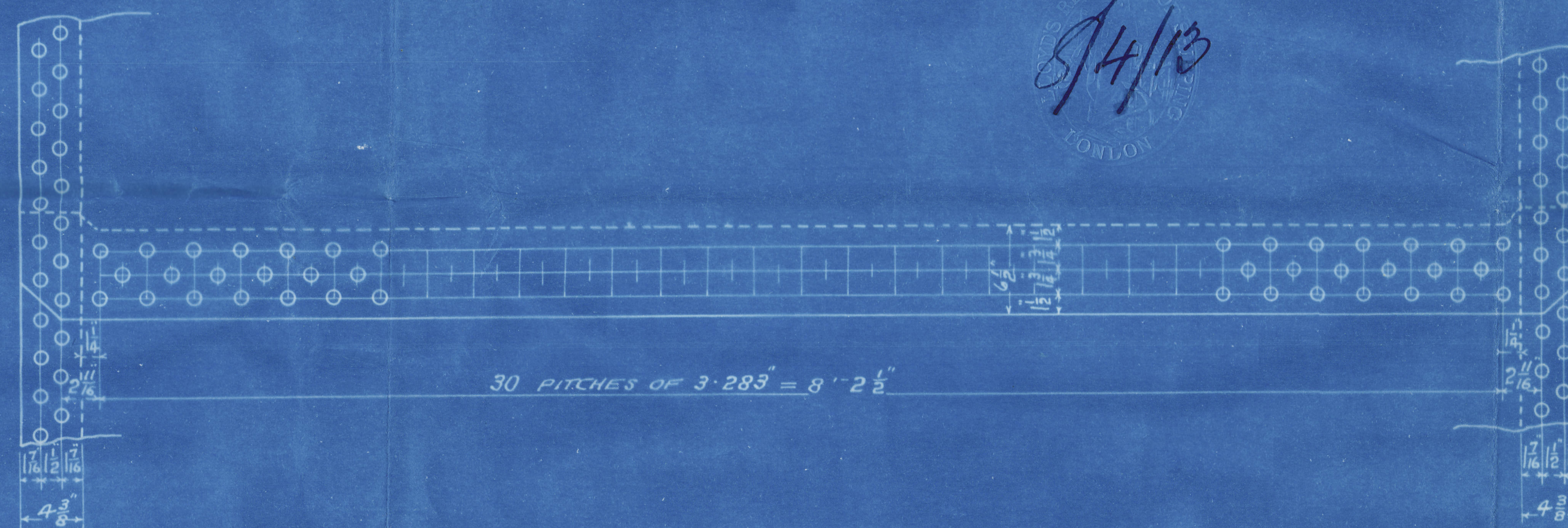
SURFACES	
TUBES	1015
FIREBOX TOP & SIDES	85.5
BACK	50
TUBE PLATE	29.5
FURNACES	70
TOTAL HEATING SURFACE	1250
GRATE AREA (5" 3" BARS)	35.5
TUBE AREA	8.5
WATER	106
STEAM SPACE	252
GRATE AREA HEATING SURFACE	1:35.2
TUBE	1:28.6
WATER	4:17.1
STEAM SPACE	1:3
% BOILER ABOVE FIREBOX	32%
WEIGHT OF WATER	14 1/2 TONS

RIVETING	
	LONG L
RIVET HOLE DIA	15/16
PITCH	3" 28/32
% PLATE	71.5
% RIVET	71.5

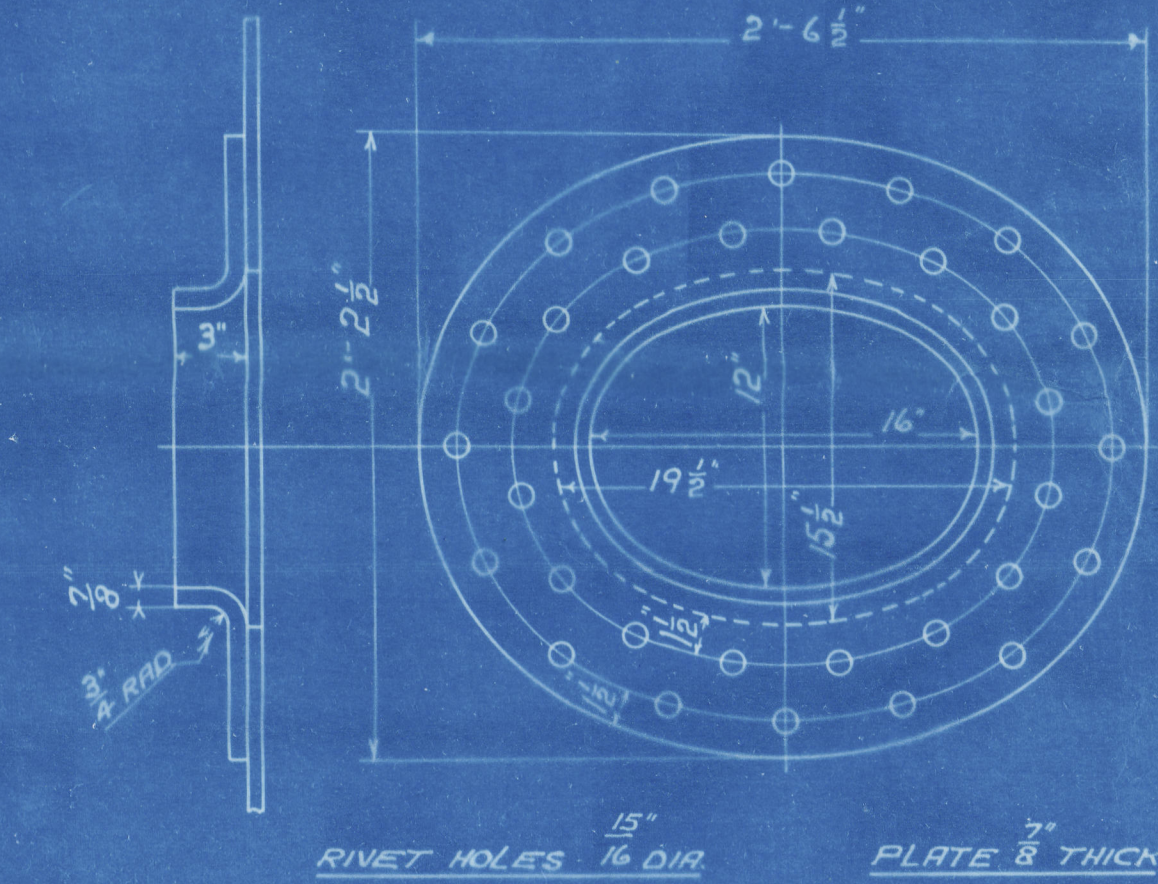
LIMITS OF TENSILE STRENGTH & MATERIAL	
SHELL BUTTSTAYS AND GIRDERS	28 TO 32 TONS
OTHER PLATES	26 " 30
FURNACES	26 " 30
MAIN STAYS	28 " 32
SCREENED STAYS	NOT TESTED
RIVET BARS	26 TO 30 TONS

ALL RIVET HOLES DRILLED IN PLACE.
MAIN STAYS SHELLED AT ENDS BY
HYDRAULIC PRESSURE AND ANNEALED.

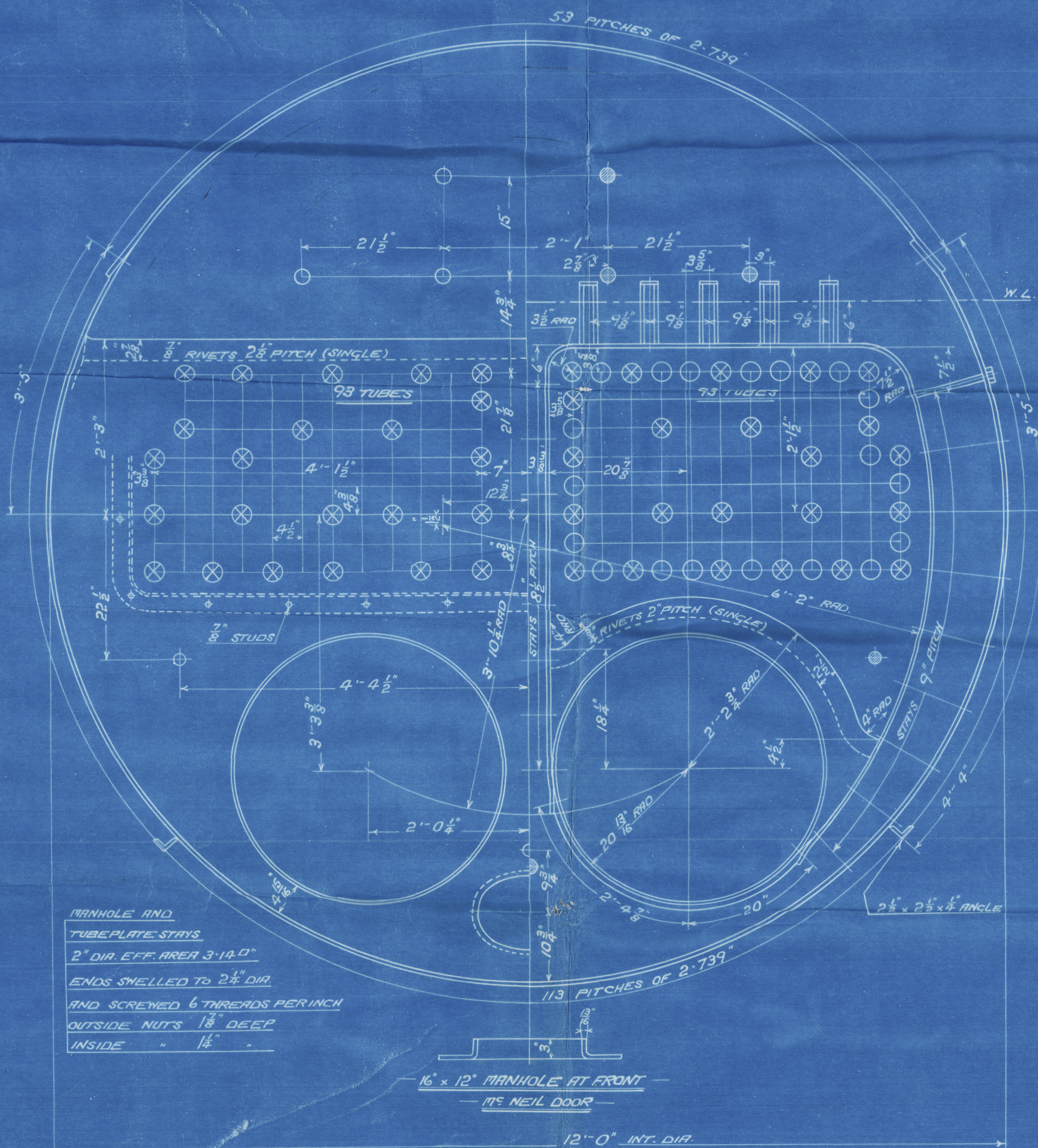
BACK END CIRCUMFERENTIAL
166 PITCHES OF 2.739"



FRONT END CIRCUMFERENTIAL
166 PITCHES OF 2.739"

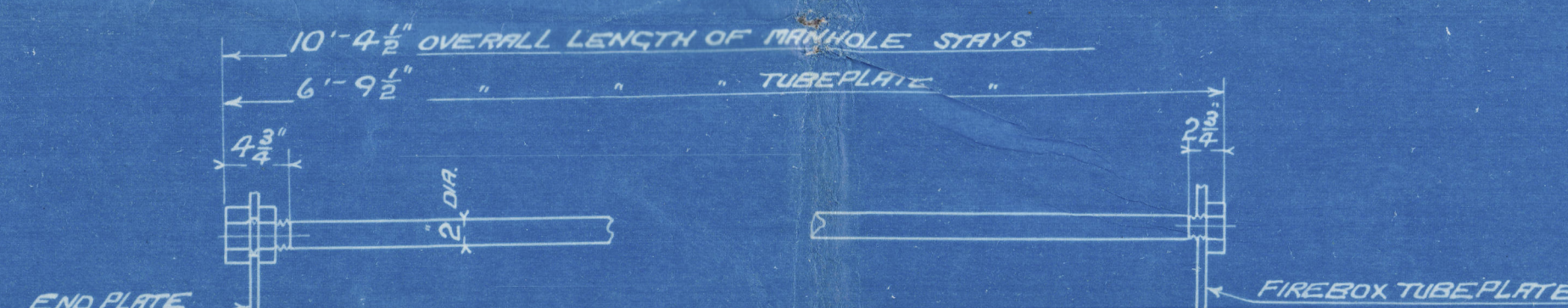


SHELL MANHOLE COMPENSATING RING
17 1/2" NEIL DOOR

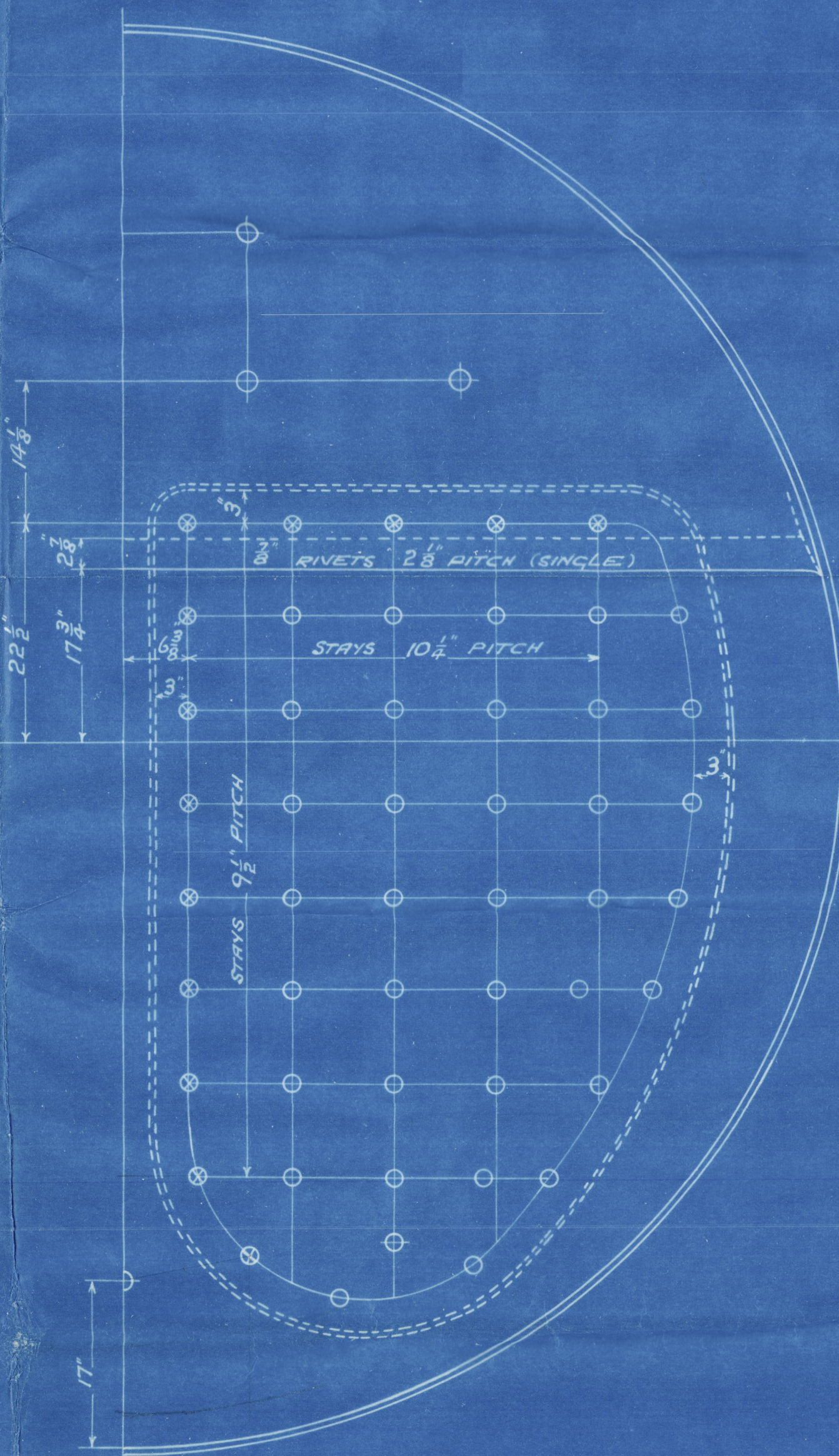
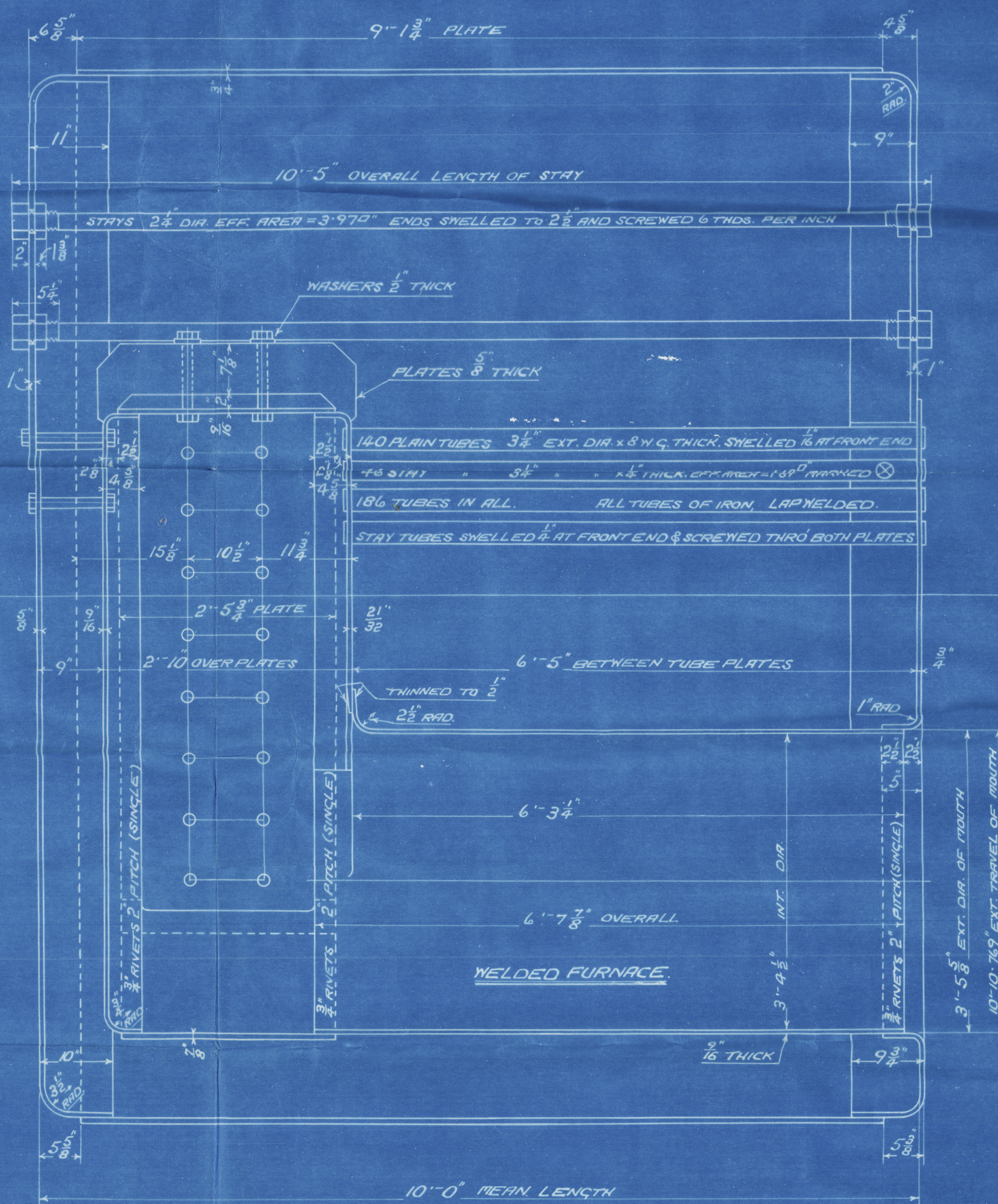


MANHOLE AND
TUBEPLATE STAYS
2" DIA. EFF. AREA 3.14 1/4"
ENDS SHELLED TO 2 1/2" DIA.
AND SCREWED 6 THREADS PER INCH
OUTSIDE NUTS 1 1/8" DEEP
INSIDE " 1 1/4"

16" x 12" MANHOLE AT FRONT
17 1/2" NEIL DOOR



DETAIL OF MANHOLE & TUBEPLATE STAYS



FIREBOX STAYS - IRON	
POSITION	MARK DIA. EFF. AREA
BACK TOP & SIDES	15/16 1.76 1/4"
" " ROW & WIDE SPACE	15/16 2.07 1/4"

ALL STAYS SCREWED THRO' BOTH PLATES AND NUT
FITTED AT EACH END.
ALL NUTS 1" DEEP EXCEPT ON GIRDER TIPS WHERE
THE OUTSIDE NUT IS 1 1/8" DEEP

DONKEY BOILER
ONE OFF
CONT. NO. 608

WORKING PRESSURE = 100 LBS PER SQUARE INCH
TO PASS LLOYD'S SURVEY
SCALES 1/4" 1/2" = ONE FOOT

APR 4.13
8.4.13

W664-0043

107.17118
TR. NO. 50107
TRACED 3/22 APRIL 1913

W 664-0043 2/2

From DAVID ROWAN & CO., GLASGOW.

ENCLOSURE

FOR MESSRS.

Lloyds Registry

W 664 - 0043 1/2

David Rowan & Co

DB 2.608

ss. "Saint Egbert."

GLASGOW REPORT No. 33801

RETAIN



© 2021

Lloyd's Register
Foundation