

N° 5678



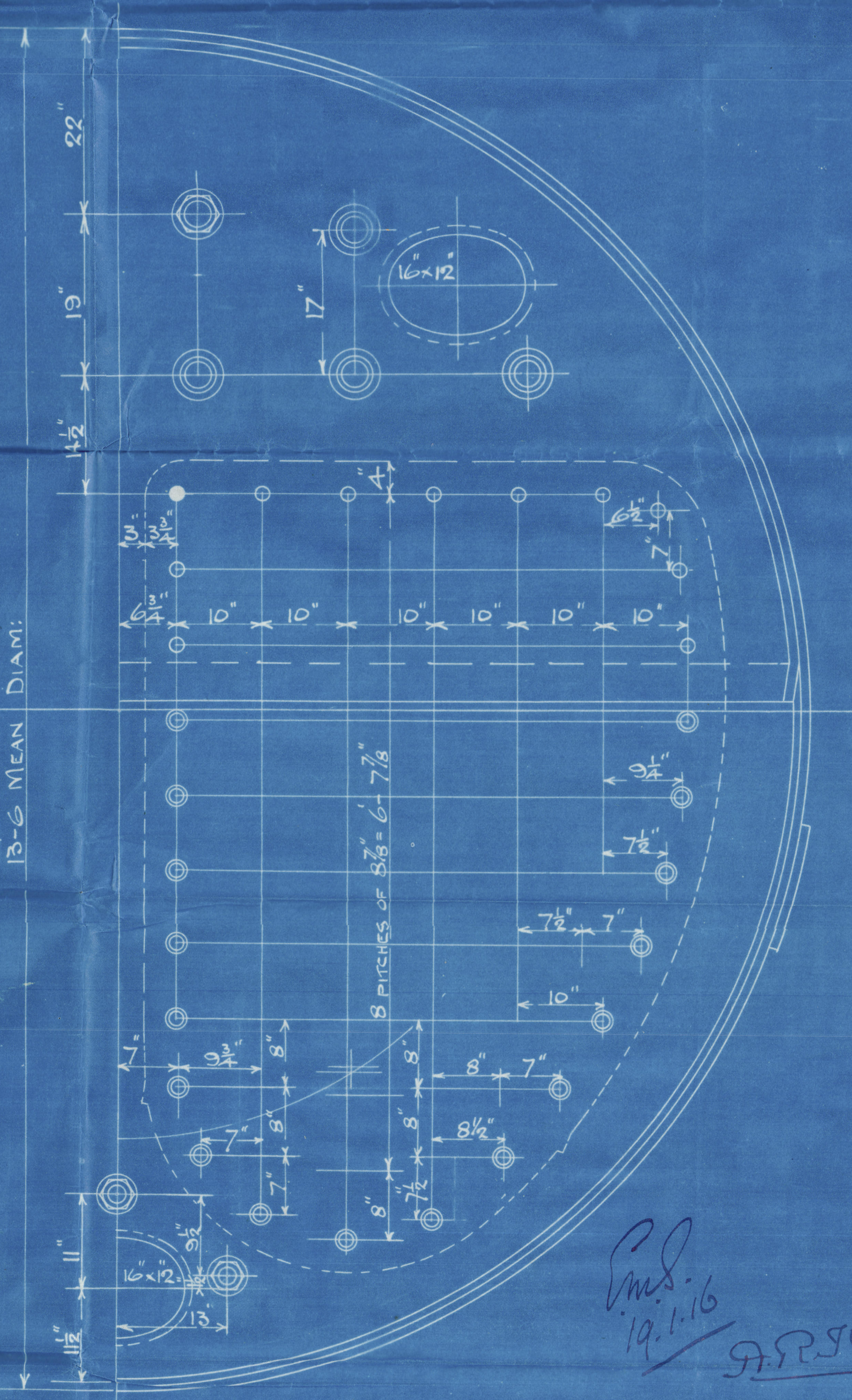
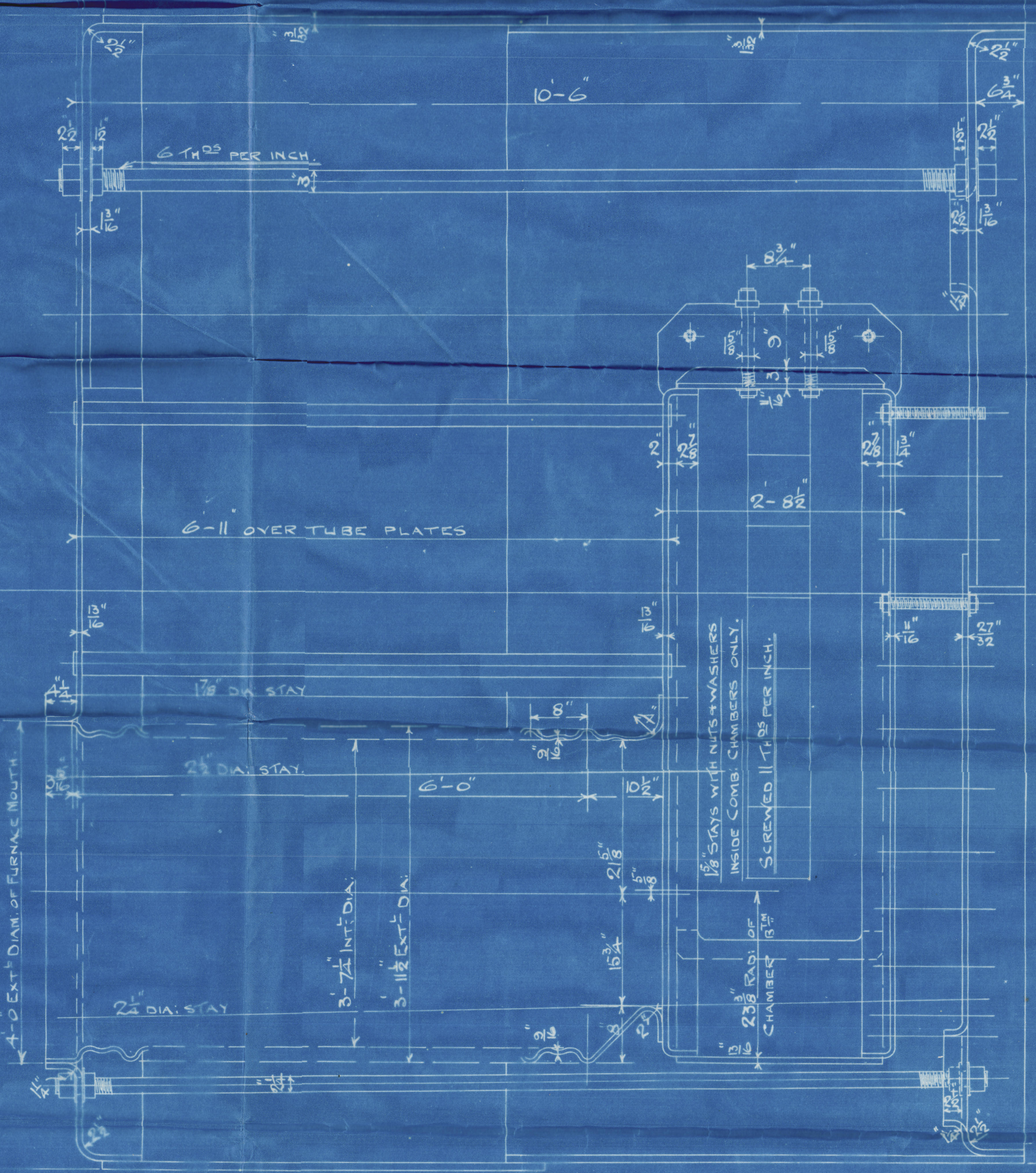
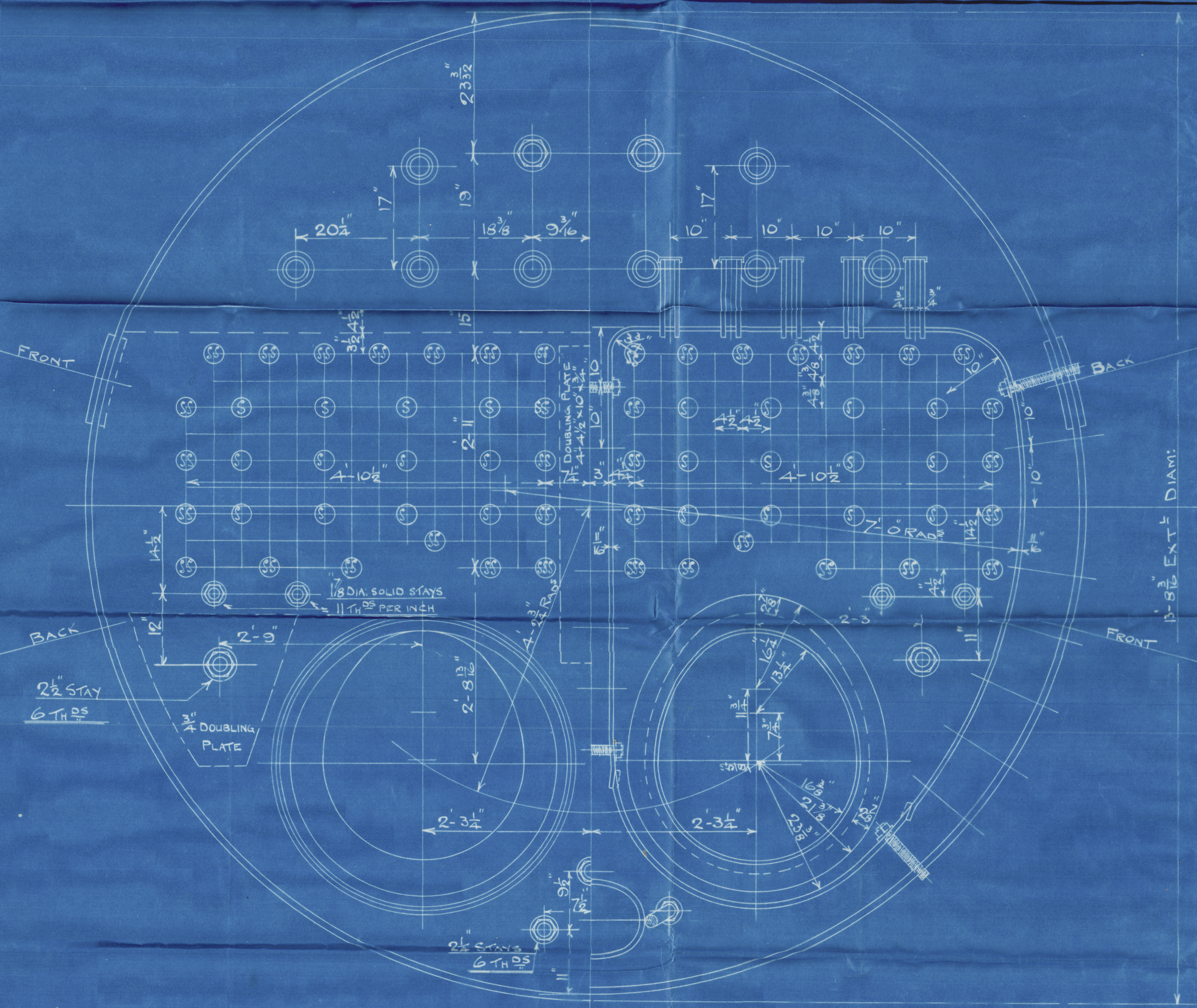
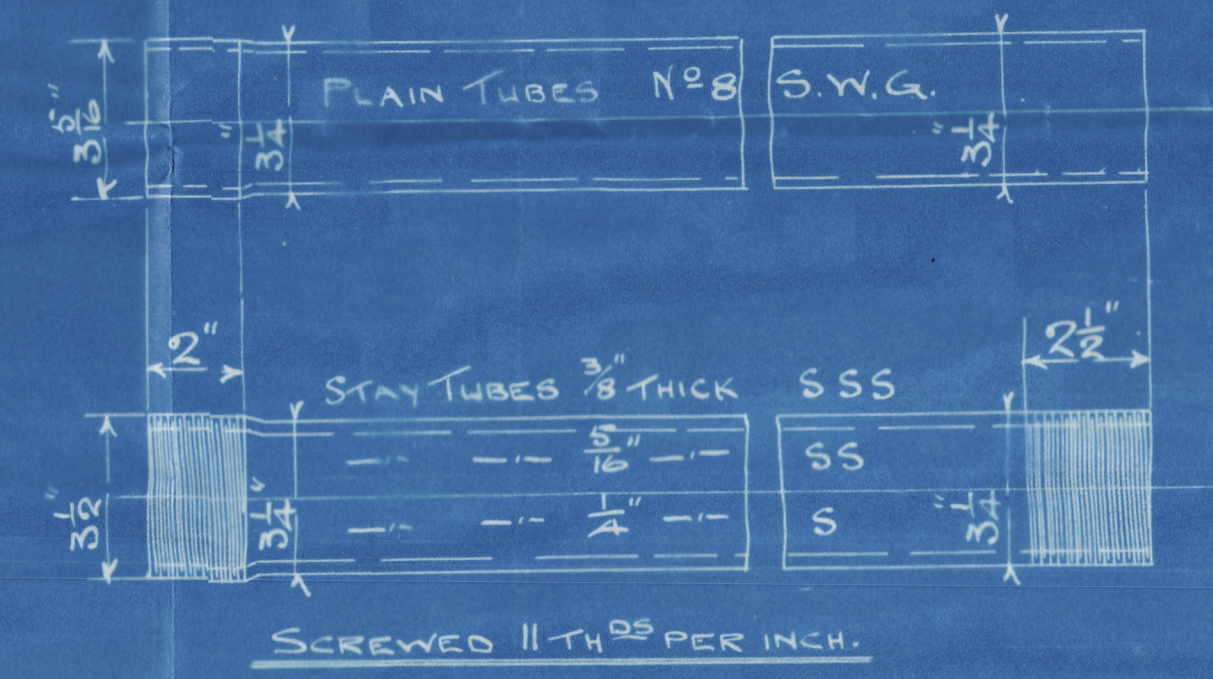
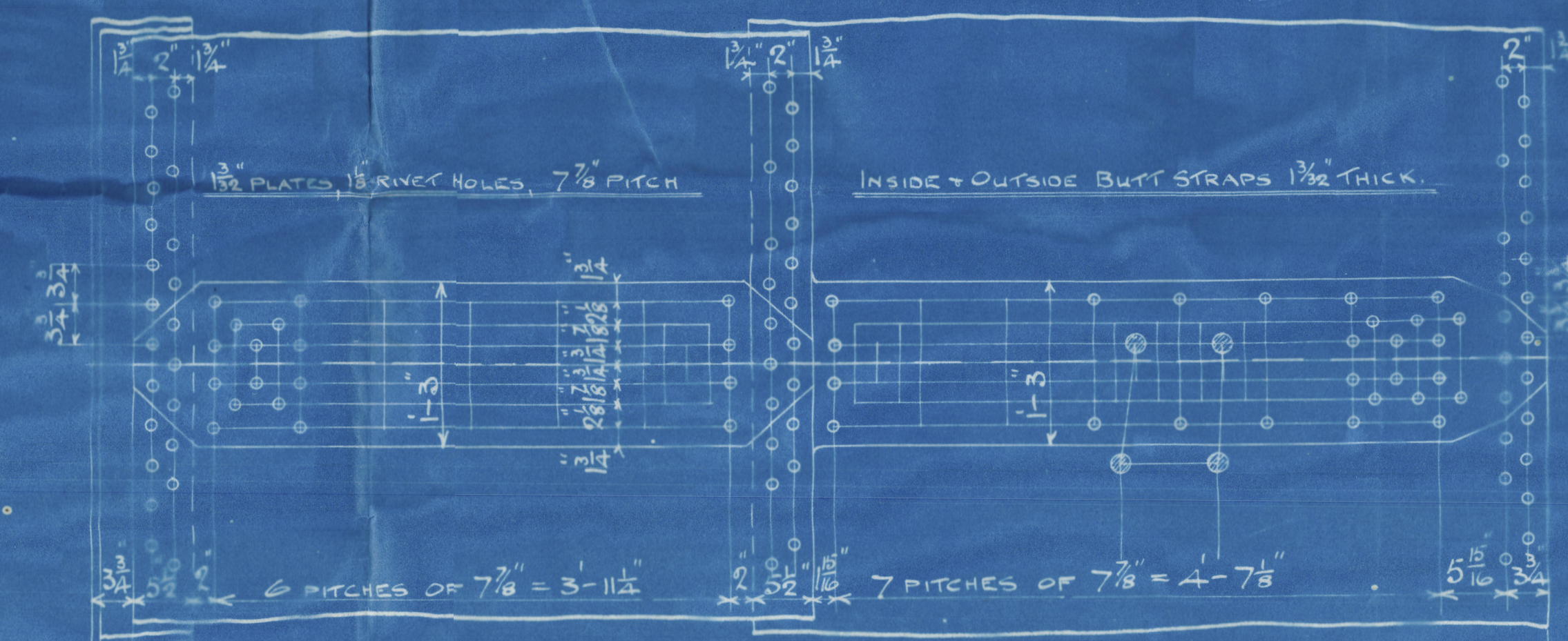
TOTAL HEATING SURFACE  
WITHOUT FRONT TURBINE PLATE  
= 3364 ft<sup>2</sup>

# SCOTIA ENGINE WORKS BOILER

SCALE: 1 INCH TO ONE FOOT  
WRITTEN DIMENSIONS ONLY TO BE TAKEN  
WORKING PRESSURE 180 LBS PER SQ. INCH.

19/1/16

TENSILE STRENGTH OF SHELL PLATES + BUTT STRAPS  
28.5 TO 32 TONS PER SQ. INCH.  
GIRDER PLATES - LONGITUDINAL STAYS  
28 TO 32 TONS PER SQ. INCH.  
ALL OTHER PLATES, STAYS + RIVETS 26 TO 30  
ALL PLATES, STAYS + RIVETS OF STEEL.  
ALL TUBES OF WROG IRON.  
ALL RIVET HOLES DRILLED IN PLACE. RIVETING HYDRAULIC.



STAYS IN COMB: CHAMBER BACKS  
1/8\"/>

ALL SCREWED 11 TH<sup>OS</sup> PER INCH.

N° 2118  
N° OFF 2



Richardsons Westgarth's

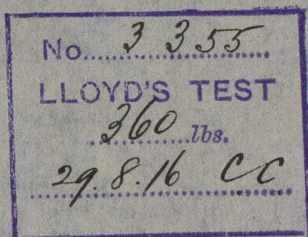
No. 2118 (2 off)

FOR

Osbourne Graham & Co's No. 201

W.P. = 180 lbs  $\square$

Mark on boilers:—



<sup>u</sup> *Wminster*

SUNDERLAND RPT. NO. 26932



© 2020

Lloyd's Register  
Foundation

W668-0144