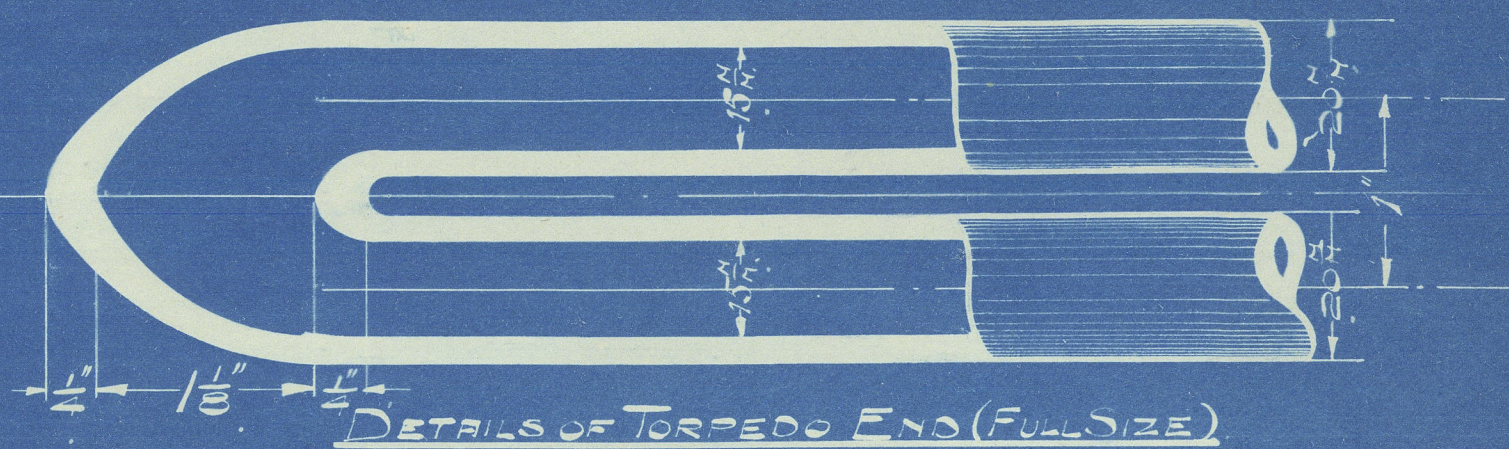


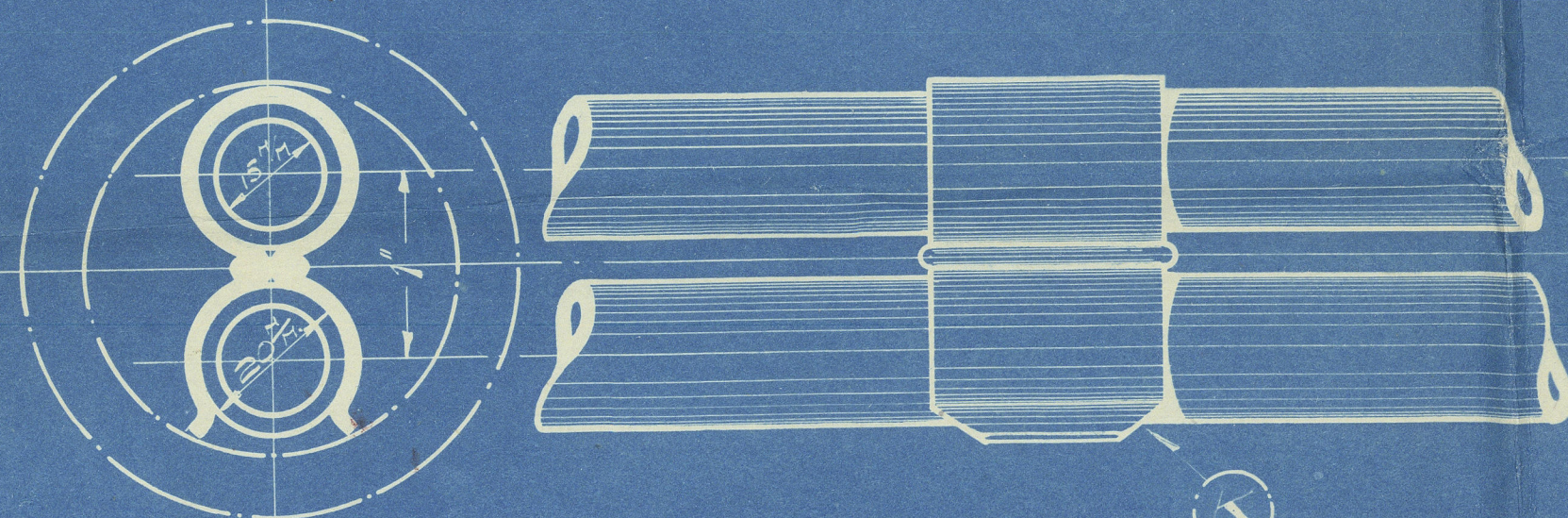
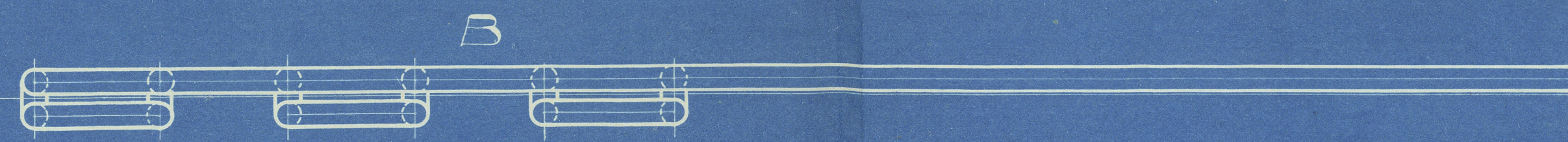
SCHMIDT'S PATENT.
SCALE 3"-1'

3/5/20
REF NO 40/3

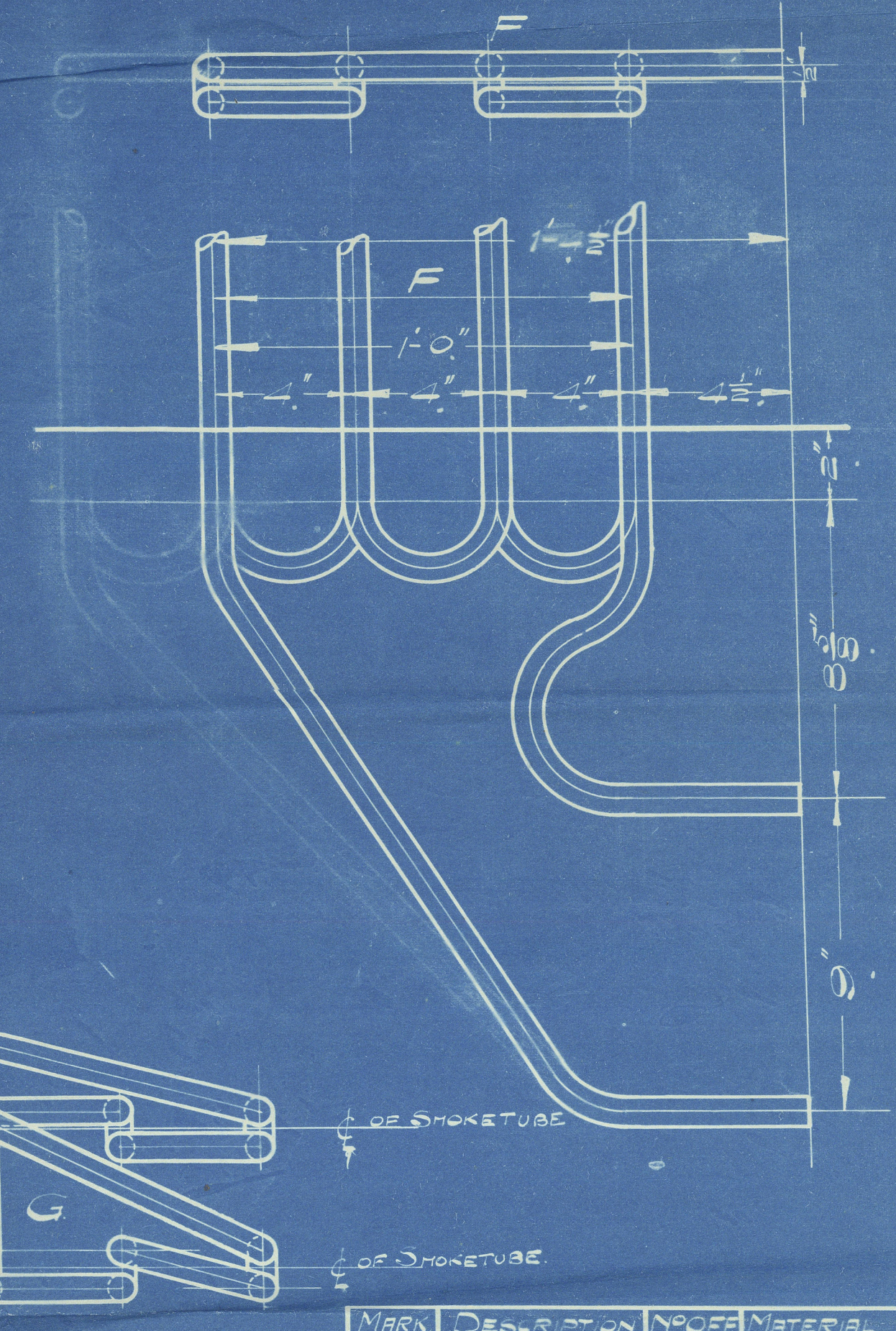
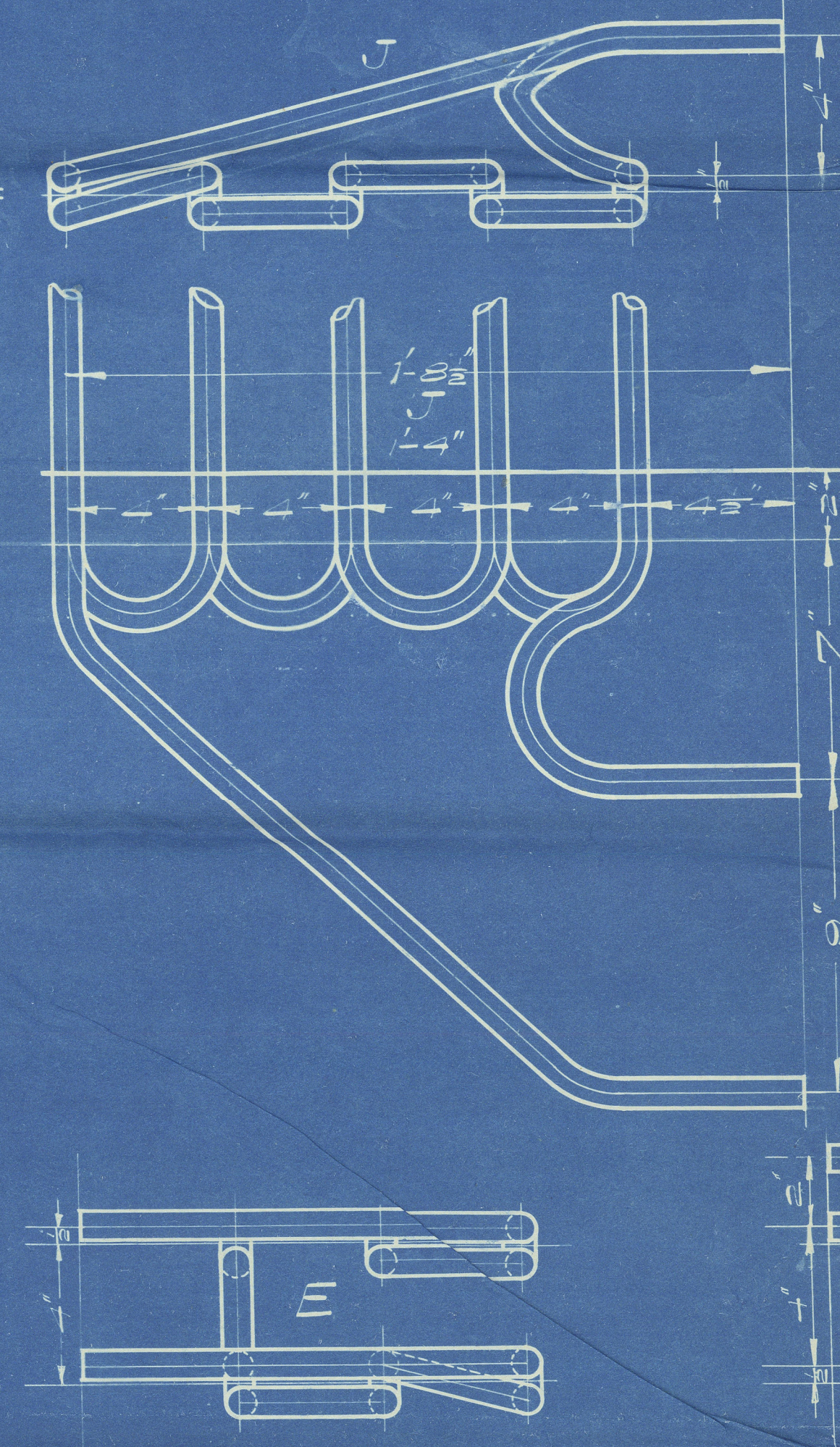
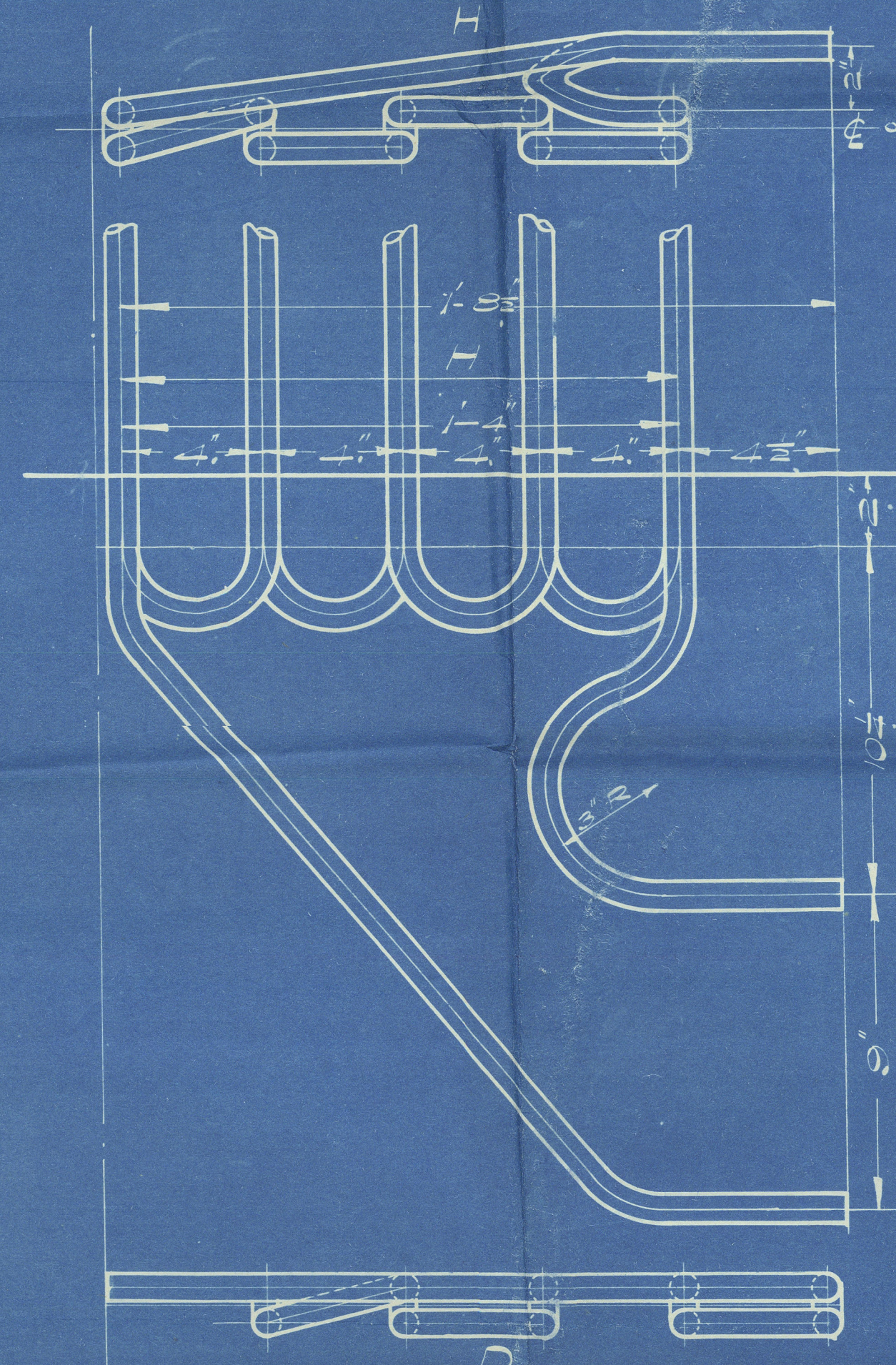
WORKING PRESSURE 215 LBS PER sq^{in}



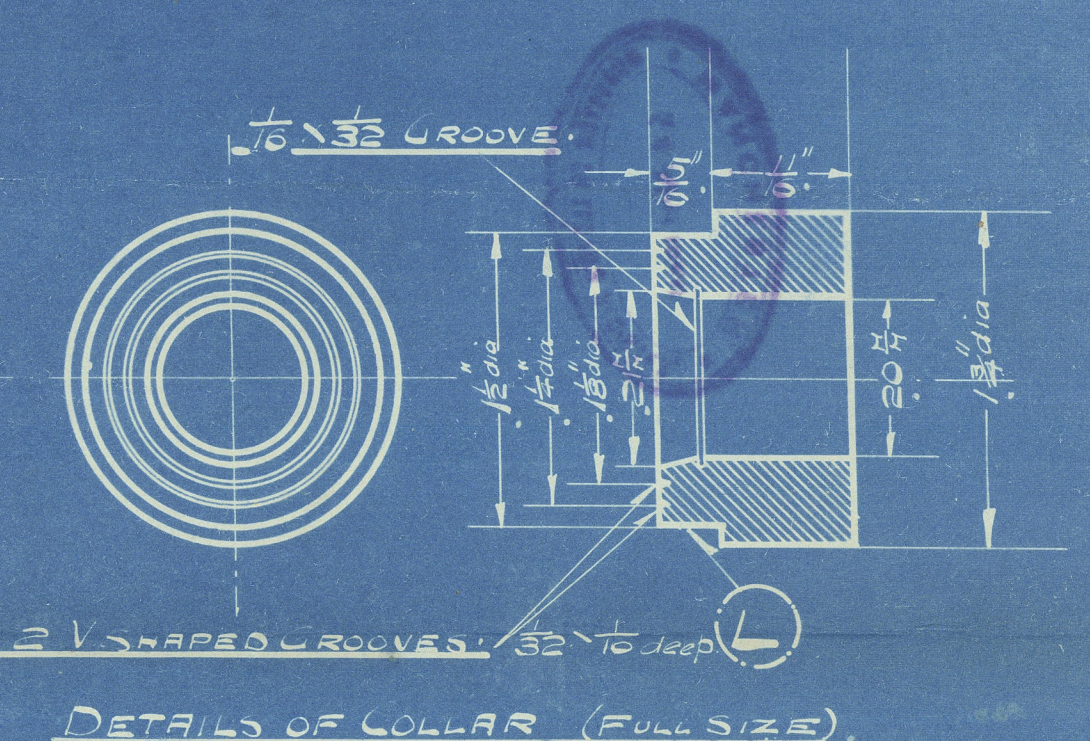
DETAILS OF TORPEDO END (FULL SIZE)



DETAILS OF CLIP (FULL SIZE)



MARK	DESCRIPTION	QTY	MATERIAL	REMARKS
A.	ELEMENTS	18 "	NH	GRH 3LH "
B.	"	2 "	NH	GRH 3LH "
C.	"	2 "	NH	GRH 3LH "
D.	"	3 "	NH	GRH 3LH "
E.	"	5 "	NH	GRH 3LH "
F.	"	1 "	NH	1LH ONLY.
G.	"	1 "	NH	1LH ONLY.
H.	"	1 "	NH	1LH ONLY.
I.	"	1 "	NH	1LH ONLY.
J.	"	1 "	NH	1LH ONLY.
K.	CLIPS	370	STEEL	NP20 33B.
L.	20% COLLARS	100	N.S.	
M.				
N.				
O.				
P.				



JOHN BROWN & Co LTD
Nos 596-7-8-9c

GO Nº 338/9

DRG. Nº B 352



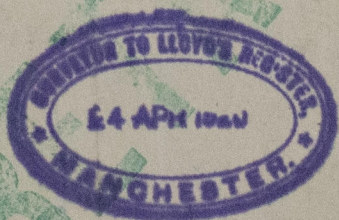
Lloyd's Register
Foundation

Marine & Locomotive
Superheaters Ltd.
(late Schmidt's Superheaters)

Superheaters for
John Brown's

Contract No 596-7-8-9C
A-

N.P. 2/5/60



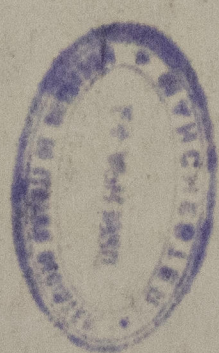
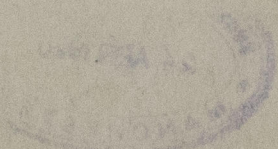
N^o 599

"CARIBOO". GLASGOW REPORT No. 43893.

© 19675 - 0046



Lloyd's Register
Foundation



© 2020



© 2020's Reg
nation