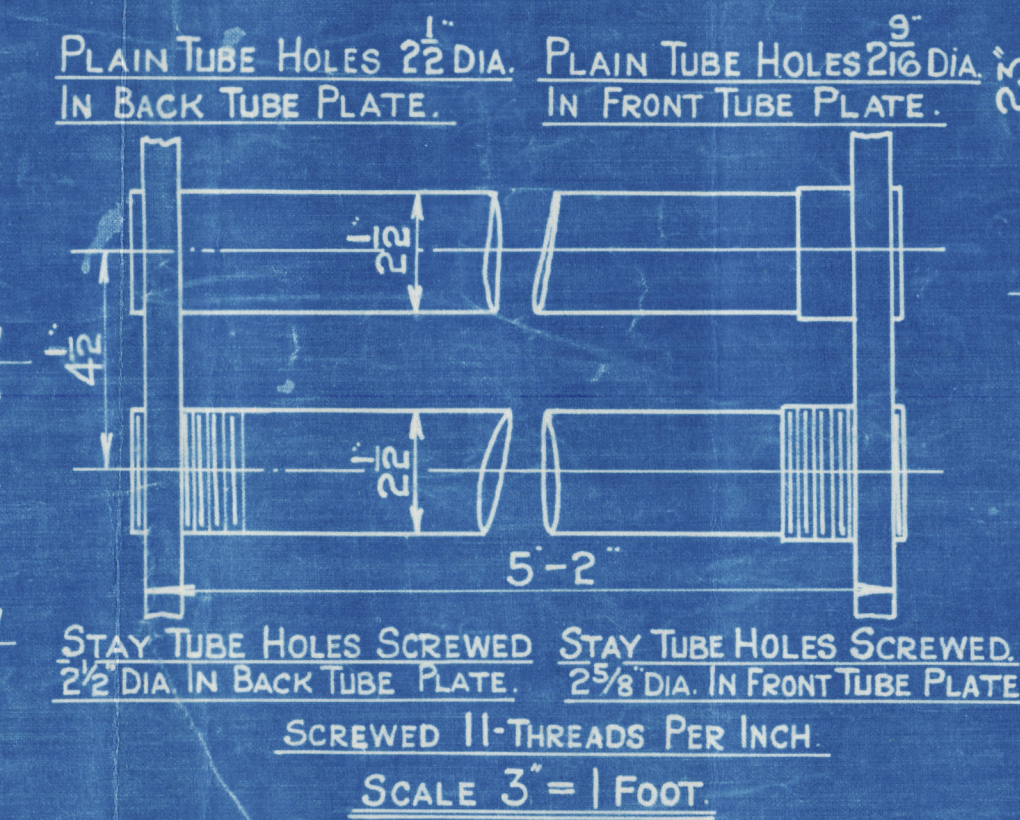


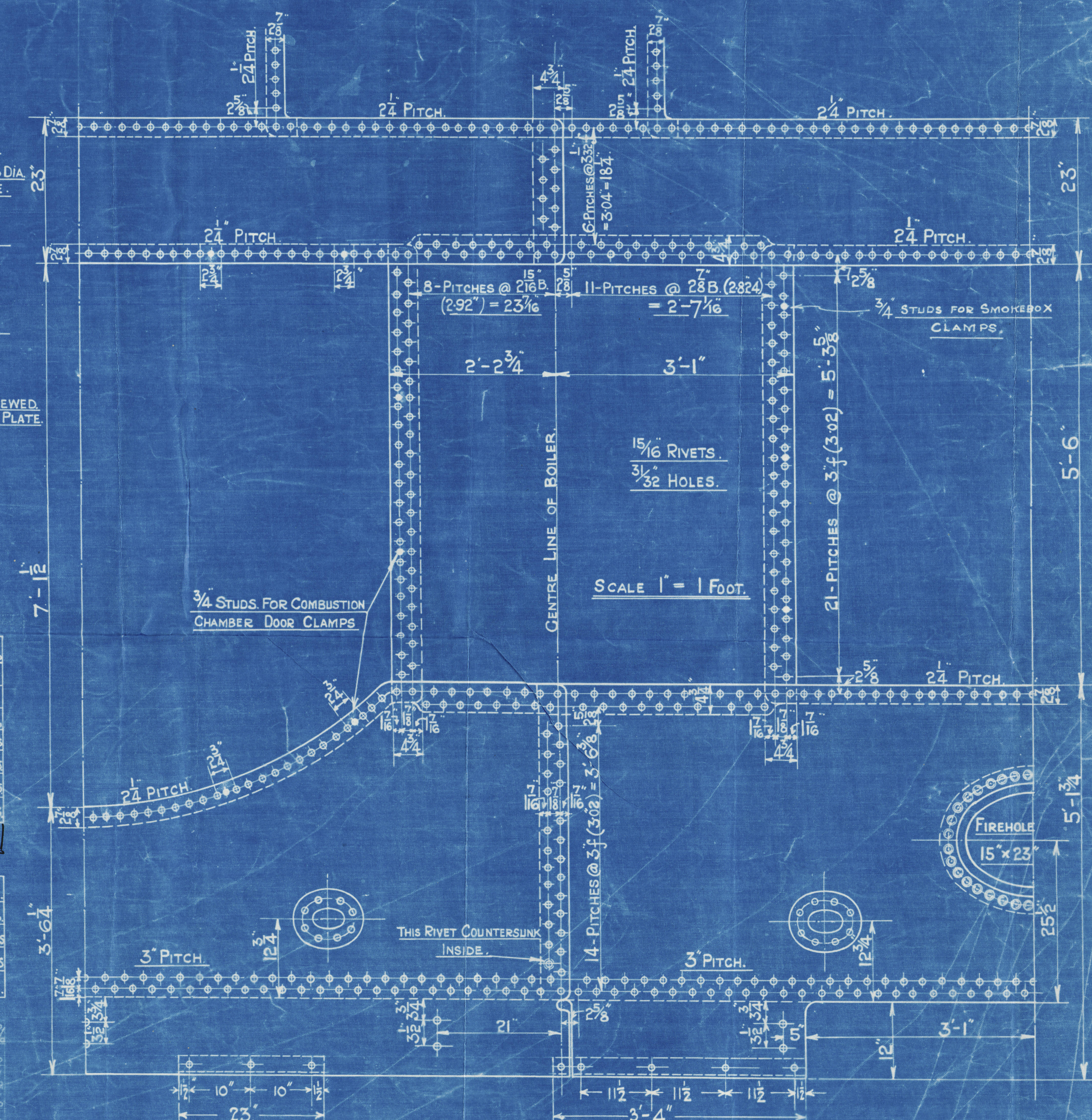
HORIZONTAL FLUE TUBES.



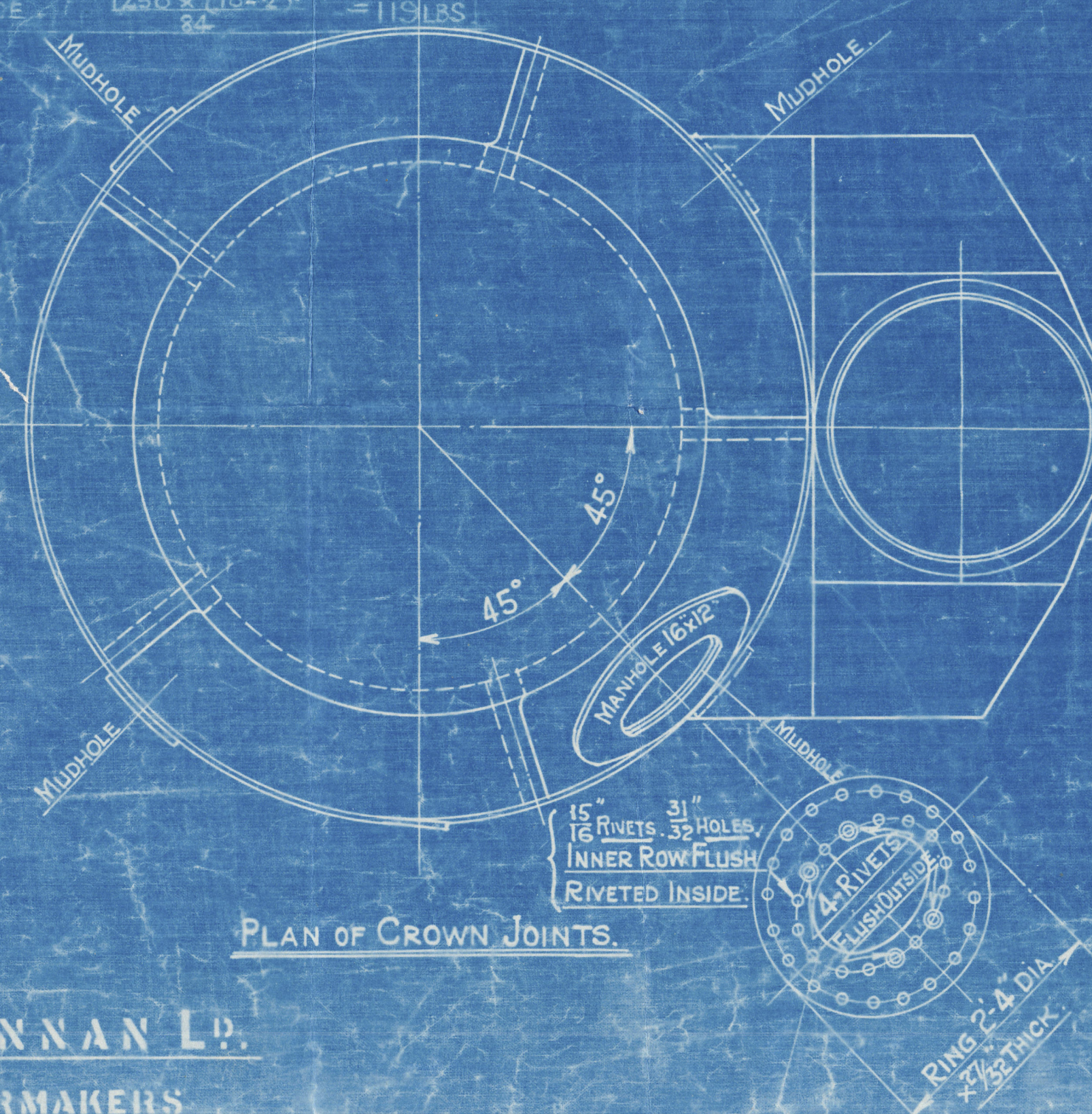
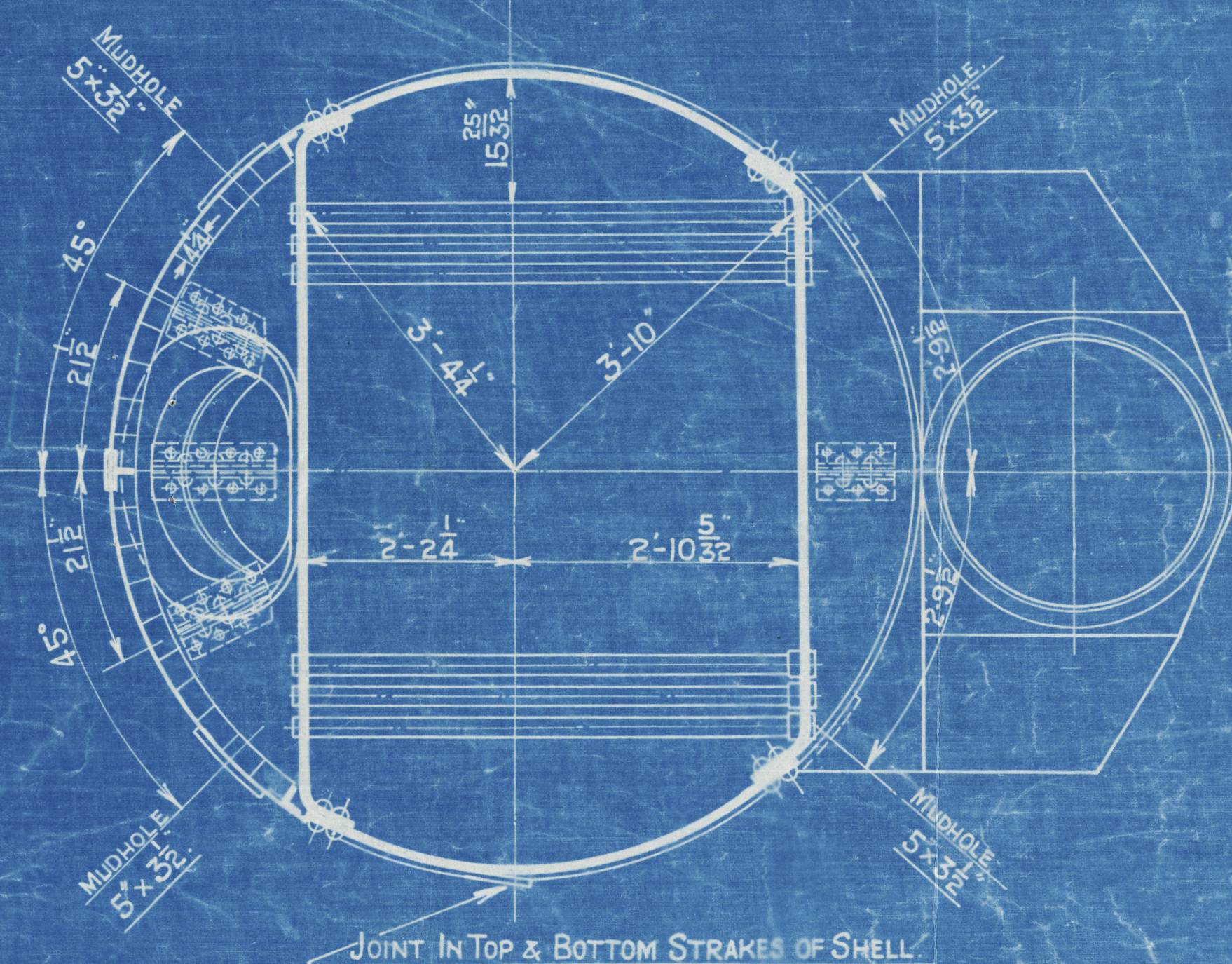
HEATING SURFACE	
TUBES	740 sq. ft.
PLATE	110 " "
TOTAL	850 " "
GRATE AREA	37 " "

LLOYDS			
PLATE	302 - 96875	$x 100 =$	67.9%
	2 x 73708 x 85		
RIVETS.	4-04 x 55375	$x 100 =$	69.4%
	45 x 55375		
FRONT TUBE PLATE	4.5 x 25	$x 100 =$	42.3%
BACK TUBE PLATE	4.5 x 25	$x 100 =$	44.4%
SHELL	105(52-2) 679	$x 100 =$	1087lbs
	20.5(12-2) 42.3	$x 100 =$	100.0lbs
FRONT TUBE PLATE	20.5(12-2) 44.4	$x 100 =$	104.9lbs
BACK TUBE PLATE	40.25 x 2	$x 100 =$	104.9lbs
	1250 x (10-2)		
FURNACE	84	$x 100 =$	119.1lbs
opening	576 x 162		
	96 x (96-84)		114.4%

	BUREAU VERITAS	
SHELL	31400 x 679 (593-04)	=122.LBS
RIVETS	2 (2 x 757) 24 x 2240	=108.LBS
FRONT TUBE PLATE	10400X-845 (4.5-2553)	=122.6LB
BACK TUBE PLATE	10400X-715 (4.5-2.5)	=114.7LB
FURNACE	50200 x 4.5	=114.LBS



BOARD OF TRADE			
	3.02 - 06.875		
PLATE	5.02	X 100	= 67.9%
FRONT TUBE	28 X 1.7378 X 2 X 4.9	X 100	= 73 %
RIVETS	28 X 1.4 - 0.51 X 5.75 X 4.5		
	4.5 - 1.588.97		
FRONT TUBE PLATE	4.5	X 100	= 42.3 %
BACK TUBE PLATE	4.5 - 2.5	X 100	= 44.4 %
SHELL	28 X 2.240 X 6.79 X 4.5375		
	4.5 - 1.588.97		
	76 X 2.240 X 4.25 X 4.375		
FRONT TUBE PLATE	34 X 1.5625 X 4.5 X 100		= 135.18%
BACK TUBE PLATE	34 X 1.5625 X 4.5 X 100		= 164.18%
	28 X 2.5 X 4.5 X 100		= 104.18%
FLANGE	14.000 X 3		= 164.18%



Approved 12-5-16

PATENT BOILER No 8232

8'-0" x 16'-6" x 850# x 100 LBS.

SCALE $\frac{3}{4}$ INCH TO 1 FOOT.

SIEMENS MARTIN MILD STEEL PLATES.

TENSILE TESTS.

PLATES NOT EXPOSED TO FLAME OR FLANGED	28 TO 32 TONS
PLATES EXPOSED TO FLAME OR FLANGED EXCEPT FURNACE CROWN	26 TO 30 TONS
FURNACE CROWN	26 TO 29 TONS

DRAWING No. 11386
Lloyd's Register Foundation

STANDARD.
SURVEY- LLOYDS.

COCHRAN & Co ANNAN LD.
ENGINEERS & BOILERMAKERS
ANNAN, SCOTLAND.

8232

11138

COCHRAN & CO., ANNAN, LD.

Boiler No. 8232

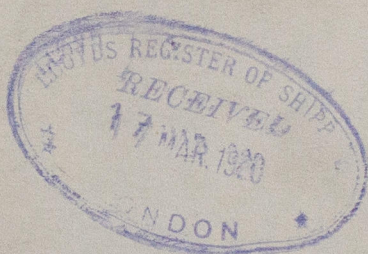
Drawing No. 11138

1000s per sq mch

Mark as boiler:-

no 15165
Lloyds Cert
2000s
HP 1000s
PMCA 12/3/20

GLASGOW REPORT No. 39432.



RE TAIN



© 2021

Lloyd's Register
Foundation

W678-0235