

SINGLE SCREW STEAMER No 397

PROFILE AND DECK PLANS

SCALE 1/8" = 1 FOOT 8th August, 1925.

DIMENSIONS 220'-0" x 35'-0" x 14'-0" TO LOWER DECK 21'-6" TO UPPER DECK
TO CLASS LLOYDS 100 A 1 (1924/5 RULES)
With FREEBOARD CORRESPONDING TO A DRAFT NOT EXCEEDING THAT OF A
C.S.S. VESSEL WITH TONNAGE OPENING

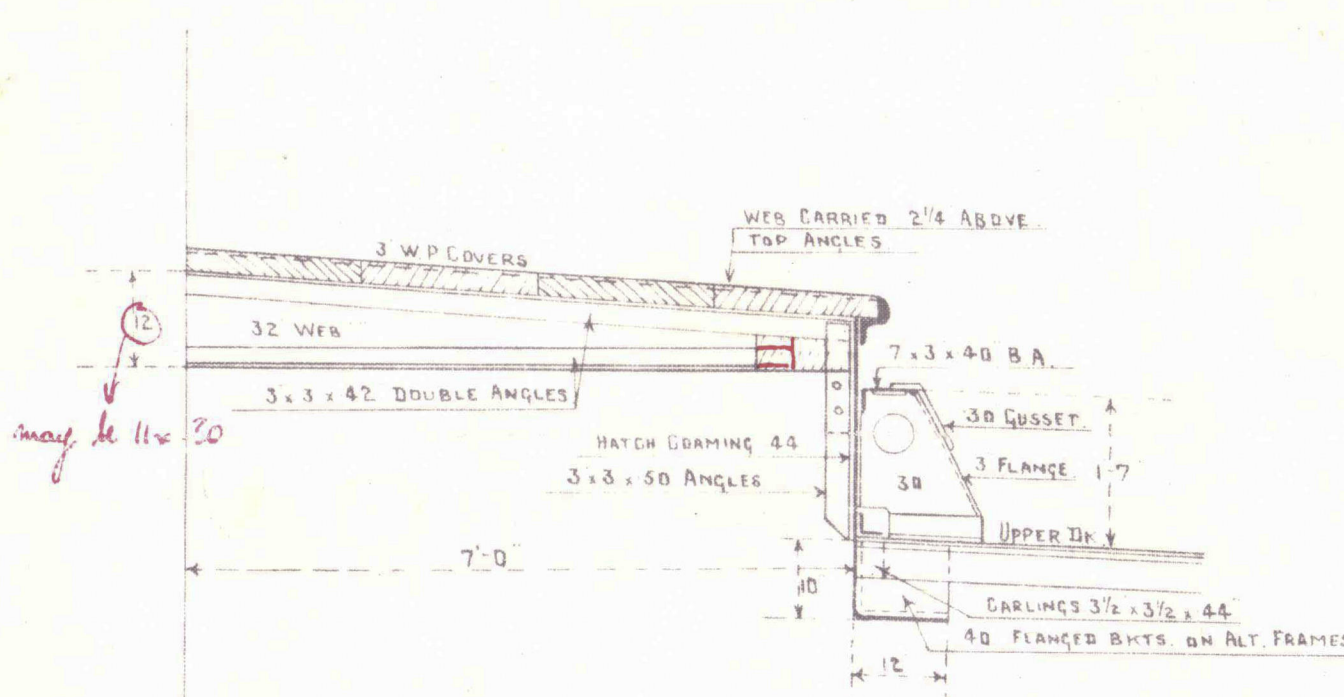
LLOYDS NUMERALS

1st LONGITUDINAL NUMBER	4730
2nd	12430
3rd TO UPPER DECK	1023
4th TO BRIDGE DECK	759
5th TO LOWER DECK	1137
6th AT COLLISION BND.	1395

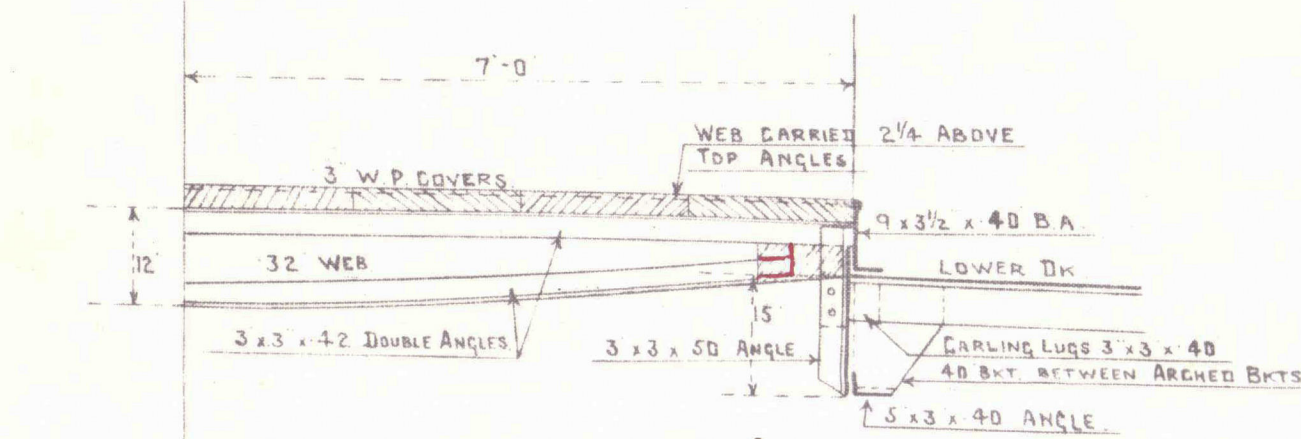
Note: Reels girders to have tripping plates and
lugs as per Part 16 para 14.

Supports under wireless masts
beams 4 to Surveyors' observation.

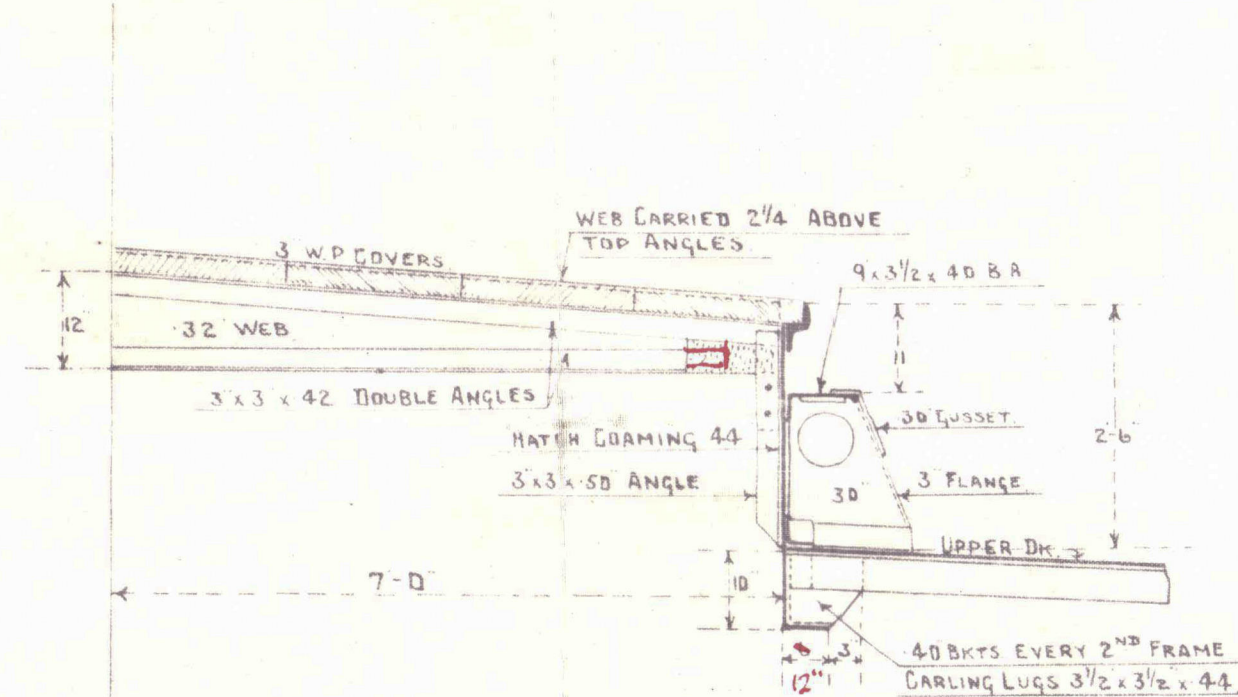
HATCH SECTION
SCALE 1/2" = 1 FT.



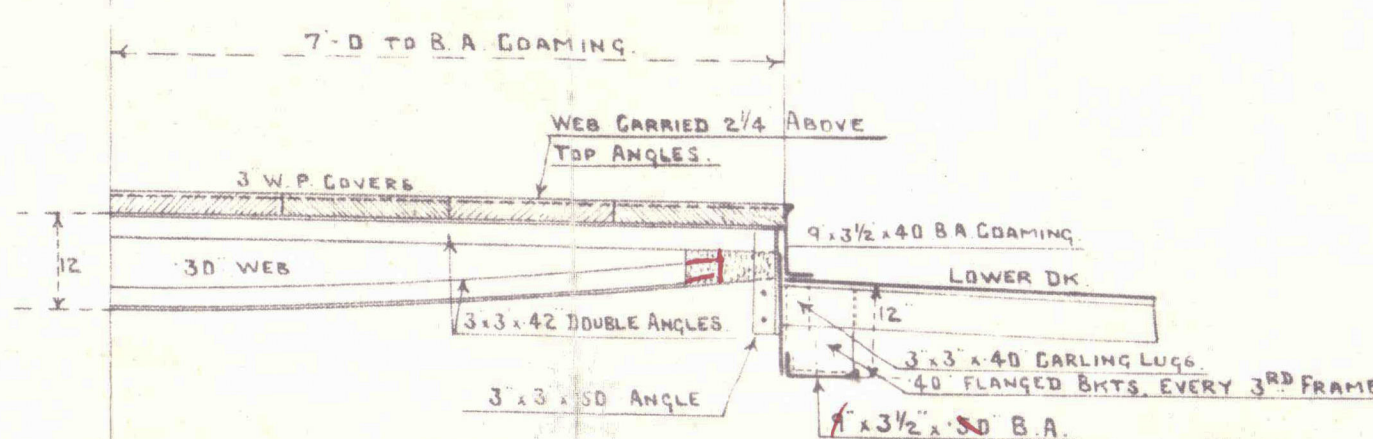
No 3 UPPER DECK HATCH



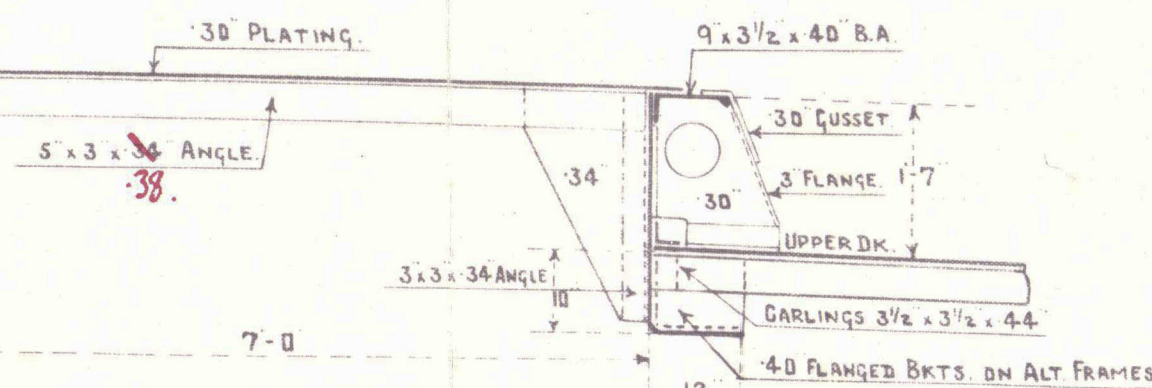
No 3 LOWER DECK HATCH



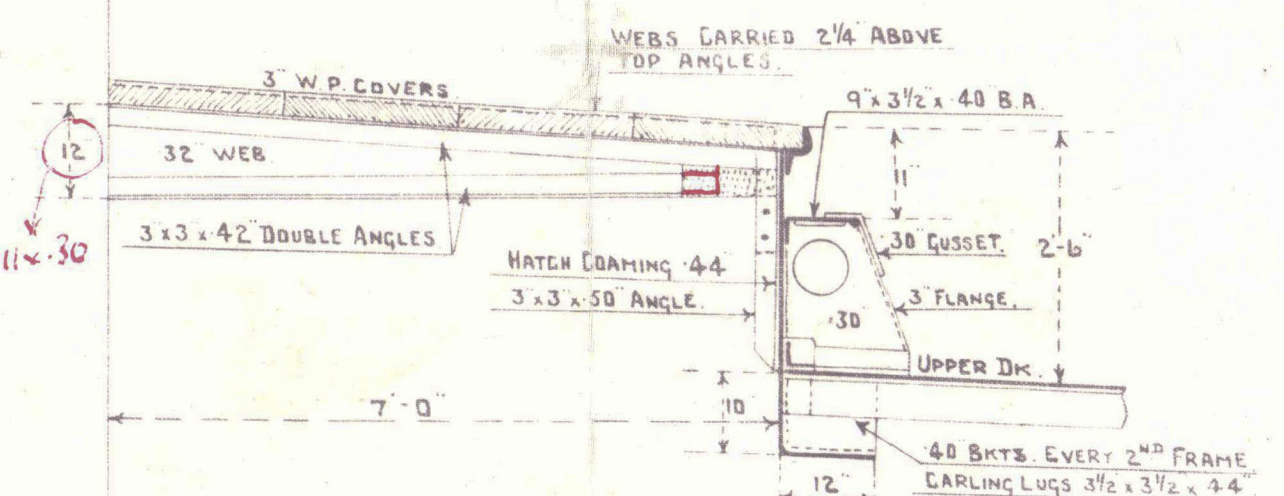
No 1 UPPER DECK HATCH



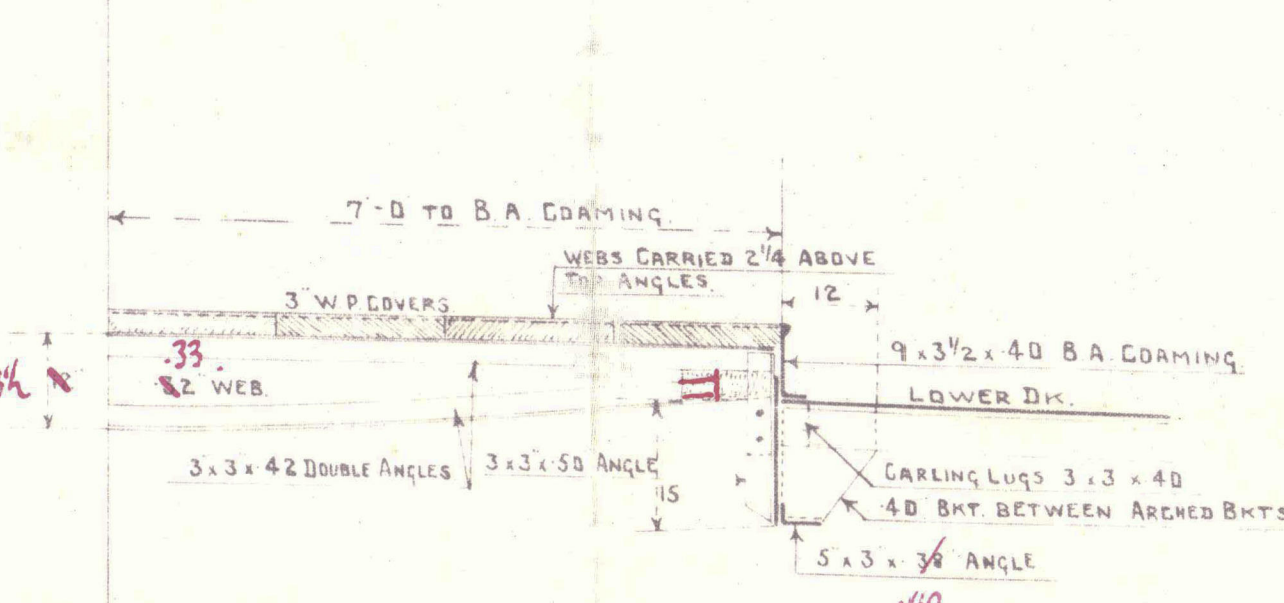
No 1 LOWER DECK HATCH



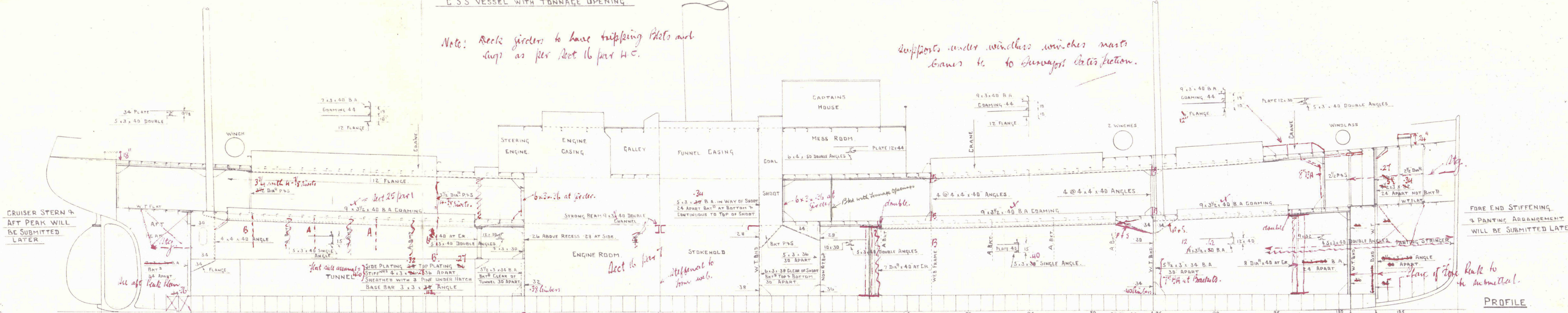
SECTION OF RAISED DECK BETWEEN HATCHES



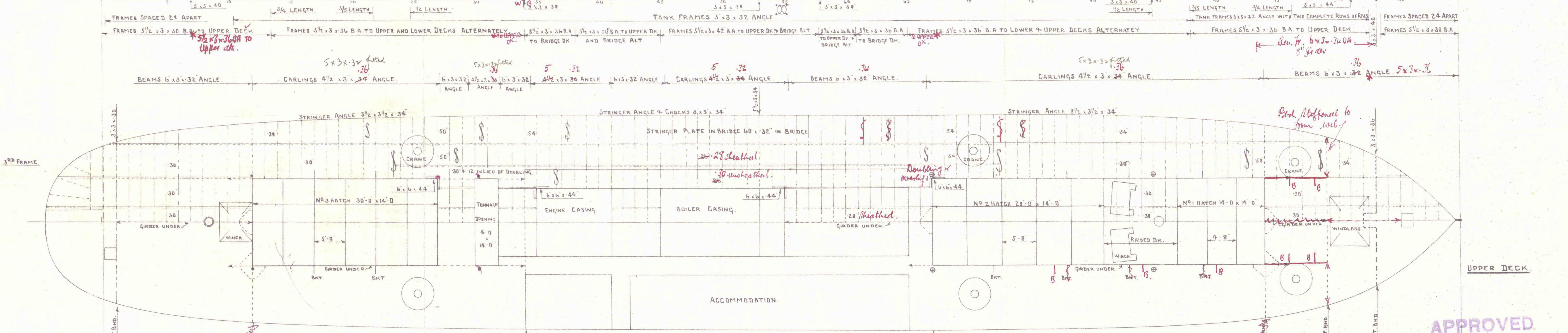
No 2 UPPER DECK HATCH



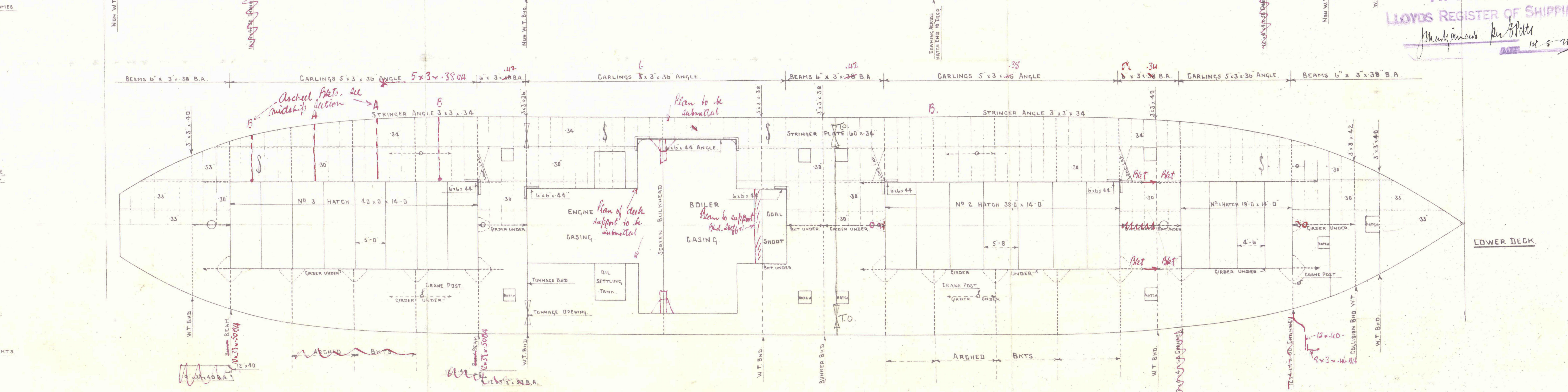
No 2 LOWER DECK HATCH



PROFILE



UPPER DECK



LOWER DECK

APPROVED
LLOYDS REGISTER OF SHIPPING
Marked as per Rules
10-5-25

Mr. Bruntlecombe

Messrs. The Atlas S. B. Co. Ltd

No. 397

Profile & Deck Plan.

W. Grebe

GLASGOW REPORT No. 45481

W 70-0192



© 2020

Lloyd's Register
Foundation